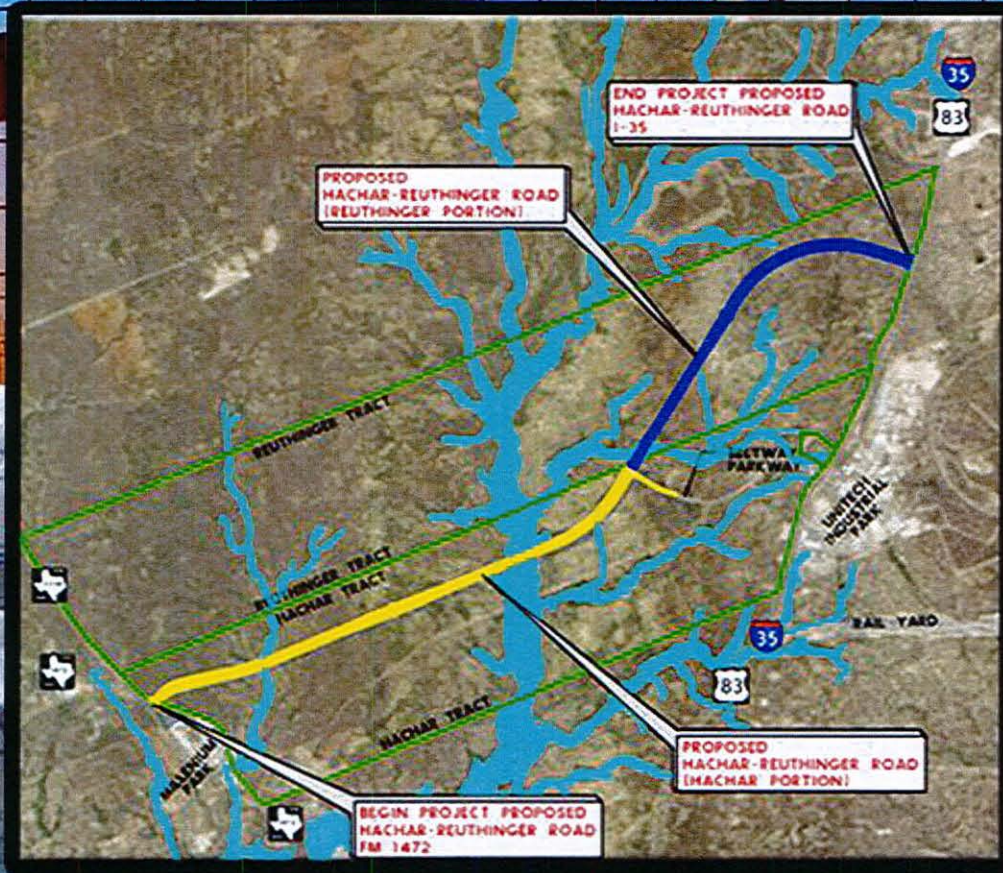




# HACHAR - REUTHINGER ROAD PROJECT UPDATE

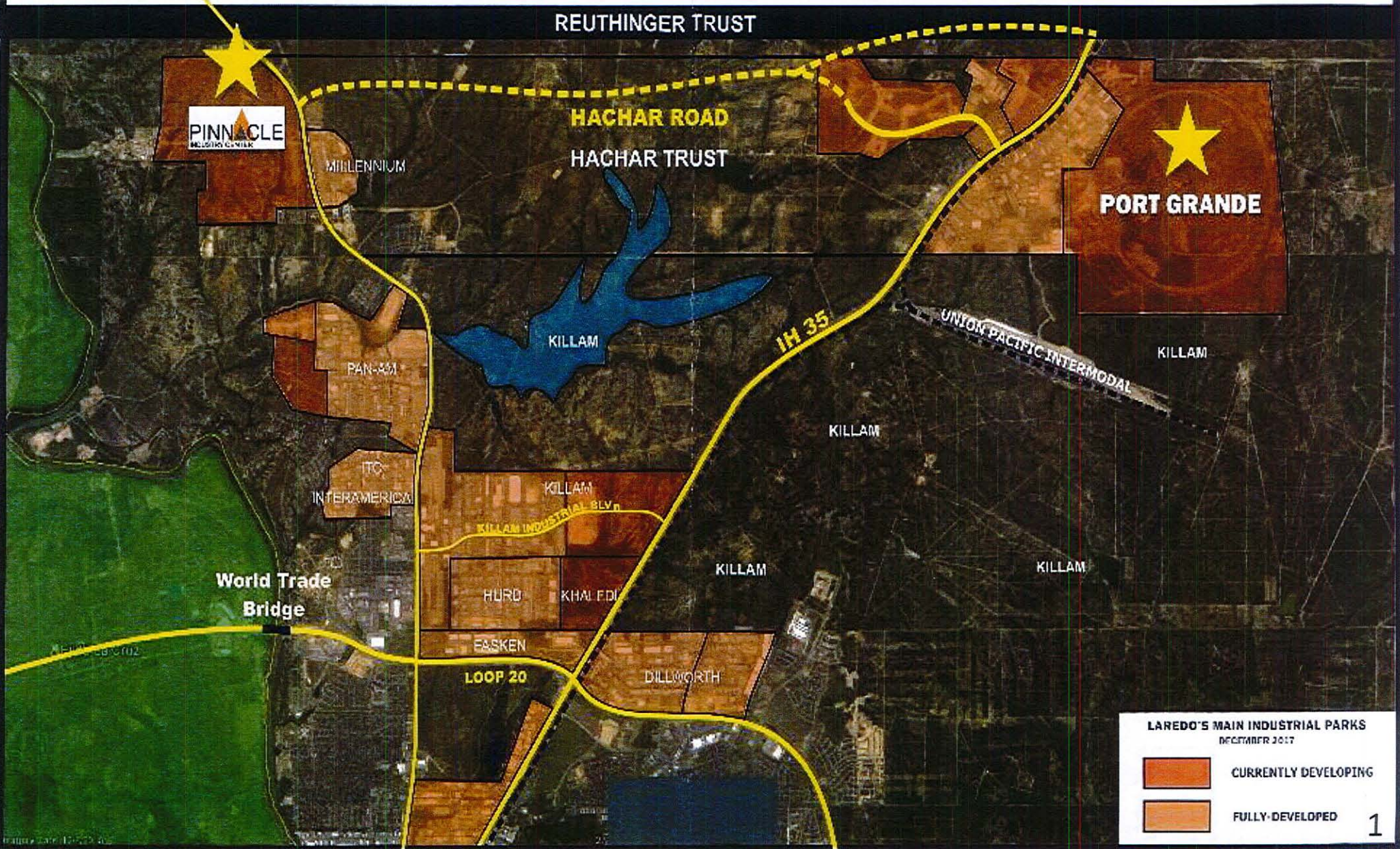


**WEBB COUNTY, TEXAS**

**June 18, 2018**

Colombia  
Bridge

# Hachar Road Location Map



REUTHINGER TRUST

**PINNACLE**  
INDUSTRIAL CENTER

MILLENNIUM

**HACHAR ROAD**  
HACHAR TRUST

**PORT GRANDE**

KILLAM

**IH 35**

UNION PACIFIC INTERMODAL

KILLAM

PAN-AM

KILLAM

ITC  
INTERAMERICA

KILLAM

KILLAM INDUSTRIAL BLVD

KILLAM

World Trade  
Bridge

HURD

KHALIDI

KILLAM

Loop 20

LOOP 20

DILLWORTH

EASKEN

**LAREDO'S MAIN INDUSTRIAL PARKS**  
DECEMBER 2017

	CURRENTLY DEVELOPING
	FULLY-DEVELOPED

1

# 1.0 CONTRACT APPROVAL STATUS

- Engineer submits contract to Webb County – May 08, 2018
- Final negotiations with Webb County complete – May 10, 2018
- Webb County submits contract for comments to TxDOT – May 11, 2018
- TxDOT notifies Webb County the need to approve Procurement Process before Reviewing contract – May 14, 2018
- County sends Procurement Package to TxDOT – May 18, 2018
- TXDOT approves Procurement Process – June 04, 2018

**Webb County waiting on TxDOT comments for over 30 days on Engineering Contract.**

**After TxDOT comment / approval of contract, Webb County expects Commissioners Court approval within two weeks.**

## 2.0 Programmed Engineering, Construction Engineering and Construction Funds

Hachar Phase I & II – Design (PSE/Geotechnical/ROW Mapping)

Reference Document: FY2015-2018 LUTS MPO TIP REV1

CSJ(s): 1922-33-165-1922-33-166

Year: FY 2017

Limits: FM 1472 to I35

Funded Phases: Design – \$1,634,277 Category 7 Funds

Total MPO Funds\*: \$1,634,277 Category 7 Funds

## 2.0 Programmed Engineering, Construction Engineering and Construction Funds

Hachar Phase I – Construction/Construction Engineering

Reference Document: FY2019-2022 LUTS MPO TIP

CSJ(s): 1922-33-165

Year: FY 2021

Limits: FM 1472 to Beltway Parkway

Funded Phases: Construction – 29,557,516  
Preliminary Engineering – \$1,448,318  
Construction Engineering – \$1,448,318

Total MPO Funds\*: \$32,454,153 - Project Cost inconsistent with most recent MTP List in 2018-Slide 10

## 2.0 Programmed Engineering, Construction Engineering and Construction Funds

Phase II

Hachar Phase II – Construction/Construction Engineering

Reference Document: 2018-07-18 LUTS MPO AGENDA and 2015-2040 LUTS MTP REV 8

CSJ(s): 1922-33-175

Year: FY 2023

Limits: FM 1472 to Beltway Parkway

Funded Phases: Construction – \$17,826,712.81\*\*

Contingency – \$1,158,736.33

Construction Engineering – \$802,202.08

Total MPO Funds\*: \$21,440,668.82

\*\*THE PROJECT HAS CONSTRUCTION COST WITH 3 YEARS OF COMPOUNDED INTEREST ADDED PLUS CE AND CONTINGENCIES.

## 2.0 Programmed Engineering, Construction Engineering and Construction Funds

Hachar/Reuthinger Trust Agrees To Donate

8 miles – 400 ft. Wide R.O.W.

(Approximate Value \$20 Million)

# 3.0 Detailed MPO Action - Programmed Engineering, Construction Engineering and Construction Funds

## LAREDO URBAN TRANSPORTATION STUDY ACTION ITEM

<p><b>DATE:</b> 7-18-16</p>	<p><b>SUBJECT:</b> RESOLUTION</p> <p>Receive public testimony and approve a Resolution 2016-10 adopting the proposed revision(s) of the 2017-2020 Transportation Improvement Program (TIP):</p> <ol style="list-style-type: none"> <li>1. <b>Addition</b> of project CSJ 0086-14-065 intended to construct an interchange facility over IH35, from 0.330 miles west of IH 35 to 0.160 miles west of McPherson Road, with an estimated project cost of \$38,100,000. Proposed project letting date is FY 2017 (January 2017).</li> <li>2. <b>Addition</b> of project CSJ 0086-14-081 intended to provide for the constructing and engineering of the ITS portion of an interchange facility over IH35, from 1.400 miles west of IH 35 to 0.600 miles west of McPherson Road, with an estimated project cost of \$1,000,000. Proposed project letting date is FY 2017 (January 2017).</li> <li>3. <b>Addition</b> of a project CSJ 0922-33-175 intended to provide funds for PS&amp;E (including right-of-way mapping) for the Hachar-Reuthinger Road Project from FM 1472 to IH35 with an estimated project cost of \$1,634,277. Proposed letting date is February 2017 (FY 17).</li> <li>4. <b>Revision</b> of project CSJ 0922-33-165 intended to provide for construction, engineering, and contingencies for the Hachar-Reuthinger Road Project, from FM 1472 to Beltway Parkway. <b>Purpose</b> of amendment is to revise funding amounts from \$22,936,054 in local funds to \$21,437,521 in Category 7 funds and \$5,359,380 in local funds. Proposed letting date is FY 2019 (September 2018).</li> <li>5. <b>Revision</b> of project CSJ 0922-33-076 intended to realign Flecha Lane and Las Cruces along FM 1472. <b>Purpose</b> of amendment is to revise the existing funding amounts. Funding amounts will be adjusted from \$1,372,973 Category 10 funds and \$707,412 local funds to \$1,440,411 in Category 10 funds, and \$606,788 local funds.</li> <li>6. <b>Revision</b> of project CSJ 0922-33-093 intended to construct a grade separation at the Calton Road/Santa Maria intersection. <b>Purpose</b> of amendment is to revise the existing funding amounts. Funding amounts will be adjusted from \$10,139,817 Category 10 funds and \$11,938,307 local funds to \$12,926,124 Category 10 funds, and 10,088,018 local funds.</li> </ol> <p style="text-align: right;">TIP 17-20/REV. 1</p>
---------------------------------	--

<p><b>INITIATED BY:</b> Staff</p>	<p><b>STAFF SOURCE:</b> Nathan Bratton, MPO Director</p>
<p><b>PREVIOUS ACTION:</b> On 6-20-16, the Policy Committee initiate a 10 day public review and comment period.</p>	
<p><b>BACKGROUND:</b></p> <p>See Attachment A- Project Summaries and Attachment B – 2017-2020 Financial Summary for full revision details.</p>	
<p><b>COMMITTEE RECOMMENDATION:</b> Approval</p>	<p><b>STAFF RECOMMENDATION:</b> Approval</p>



# 3.0 Detailed MPO Action - Programmed Engineering, Construction Engineering and Construction Funds

## RESOLUTION NO. MPO 2016-10

BY THE LAREDO URBAN TRANSPORTATION STUDY  
METROPOLITAN PLANNING ORGANIZATION POLICY COMMITTEE

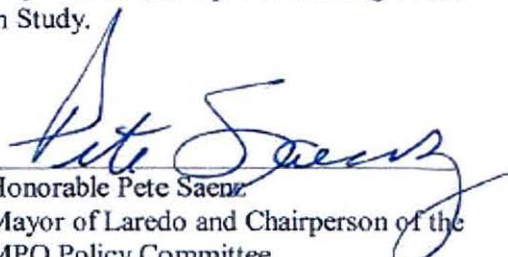
### ADOPTING THE 2017-2020 TRANSPORTATION IMPROVEMENT PROGRAM (TIP)


**WHEREAS**, the Laredo Urban Transportation Study (LUTS), the designated Metropolitan Planning Organization (MPO) for the Laredo Urban Area, has reviewed the proposed revision(s) of the 2017-2020 Transportation Improvement Program (TIP); and,

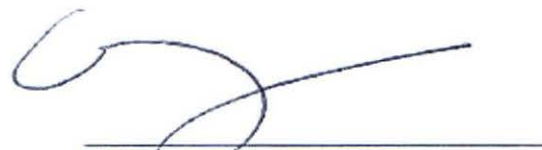
**WHEREAS**, the Laredo Urban Transportation Study finds that the proposed revision(s) of the 2017-2020 Transportation Improvement Program (TIP) meets the high priority improvements necessary for the LUTS area;

**NOW THEREFORE BE IT RESOLVED**, that the Laredo Urban Transportation Study, as the designated Metropolitan Planning Organization for the Laredo Urban Area, adopted the proposed 2017-2020 Transportation Improvement Program (TIP), which are attached hereto and made a part hereof for all purpose:

We certify that the above resolution was adopted on July 18, 2016, at a public meeting of the Policy Committee of the Laredo Urban Transportation Study.

  
Honorable Pete Saenz  
Mayor of Laredo and Chairperson of the  
MPO Policy Committee

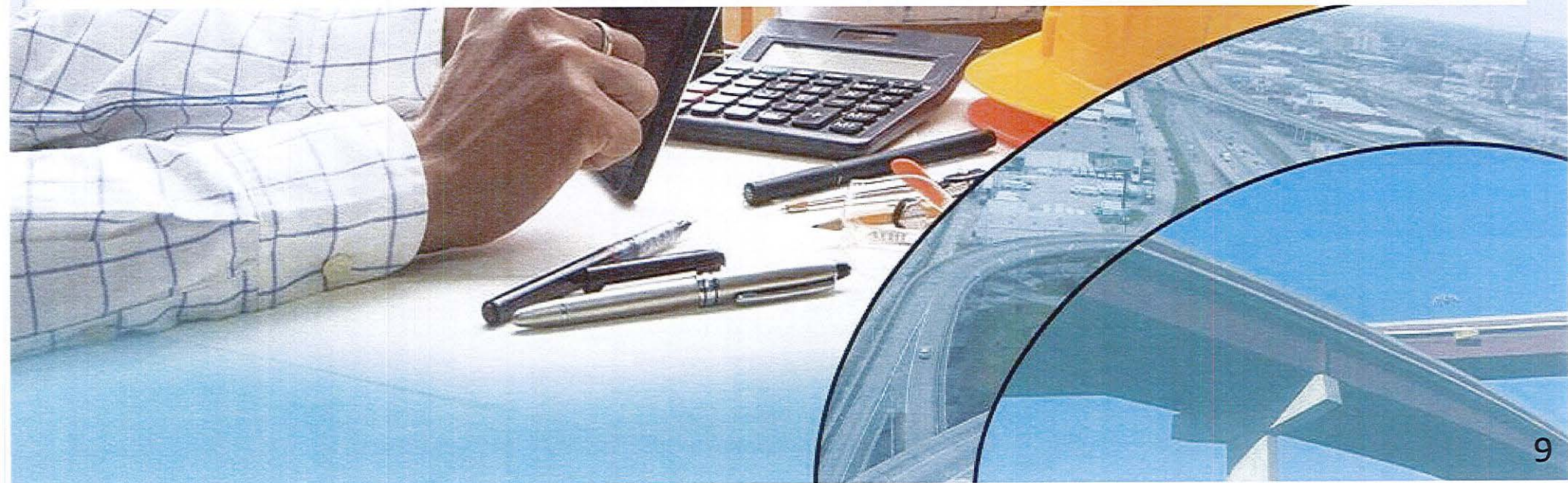
  
Nathan Bratton  
MPO Director

  
Melisa Montemayor  
Laredo District Administrator

# 3.0 Detailed MPO Action - Programmed Engineering, Construction Engineering and Construction Funds

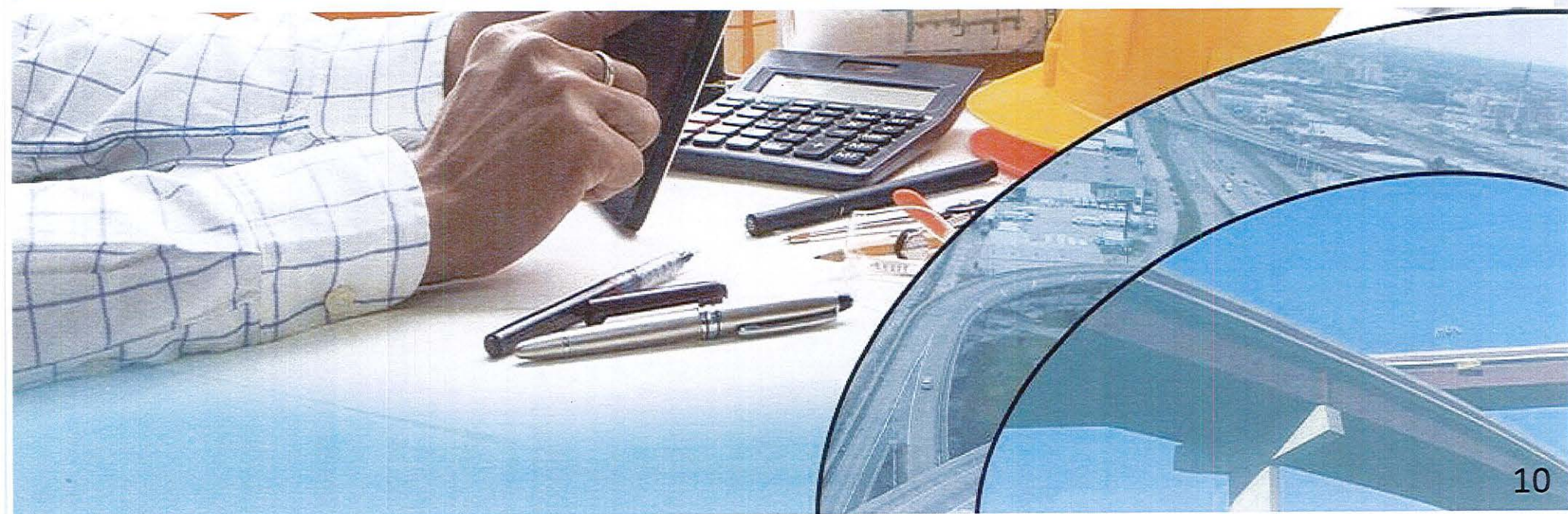
<b>Project</b>		<b>Hachar Loop PS&amp;E from FM 1472 to I-35 (Interim section - 5 lane rural)</b>			
		<b>Scheduled letting: February 2017</b>			
<b>LATEST ESTIMATE - 10/1/15 - DEC</b>					
ROW					\$13,538,062.00
Construction Cost					\$41,968,066.46
Construction Engineering	4.50%				\$1,888,562.99
Contingency	6.50%				\$2,727,924.32
Indirect	6.20%				\$2,602,020.12
PS&E *	3.89%				\$1,634,277.42
Total Project Cost					\$64,358,913.31
YOE Cost					\$1,634,277.42
<b>PROPOSED PROGRAMMING</b>					
Funding by Category	Phase	Total	Federal	State	Local
Category 7	Design / PS&E		1,634,277.42	1,307,421.94	261,484.39
<b>TOTAL PROGRAMMED FUNDS</b>			<b>1,634,277.42</b>	<b>1,307,421.94</b>	<b>0.00</b>
<b>CBI FUNDS to Redistribute</b>					

\* based off of the latest construction estimate , requires negotiation and approval of fee by TxDOT. Assumes roadway may be taken on system.



# 3.0 Detailed MPO Action - Programmed Engineering, Construction Engineering and Construction Funds

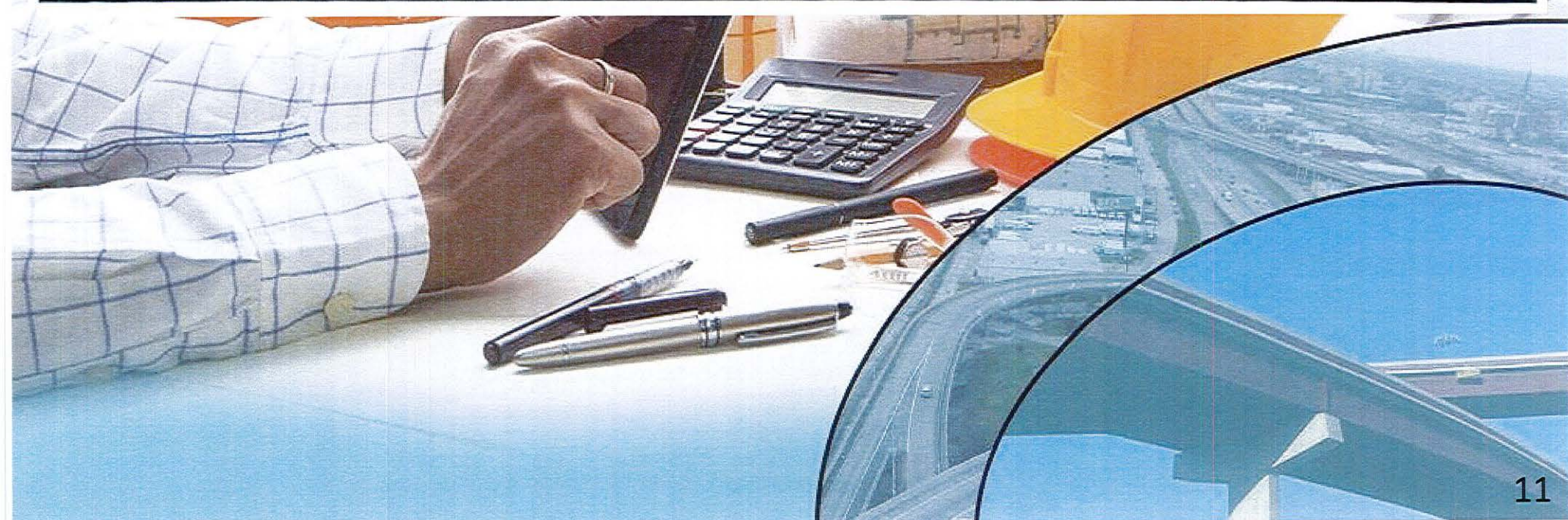
<b>Project</b>		<b>Hachar Loop Construction FM 1472 to Beltway Parkway (interim section - 5 lane rural)</b>			
		<b>Scheduled letting: September 2019 - FY2020</b>			
<b>LATEST ESTIMATE - 10/1/15 - DEC</b>					
ROW			\$13,538,062.00		
Construction Cost			\$24,141,353.65		
Construction Engineering	4.50%		\$1,086,360.91		
Contingency	6.50%		\$1,569,187.99		
Indirect	6.20%		\$1,496,763.93		
Total Project Cost			\$41,831,728.48		
YOE Cost*			\$26,796,902.55		
<b>PROPOSED PROGRAMMING</b>					
Funding by Category	Phase	Total	Federal	State	Local
Category 7	Construction	\$26,796,902.55	21,437,522.04		4,287,504.41
<b>TOTAL PROGRAMMED FUNDS</b>		<b>26,796,902.55</b>	<b>21,437,522.04</b>		<b>4,287,504.41</b>
* based off of the latest construction estimate , requires negotiation and approval of fee by TxDOT. Includes Construction Engineering and Inspection (Local Let).					



# 3.0 Detailed MPO Action - Programmed Engineering, Construction Engineering and Construction Funds

<b>Project</b>		<b>Hachar Loop Construction Beltway Parkway to I-35(Interim section - 5 lane rural)</b>			
		<b>Scheduled letting: September 2022 - FY2023</b>			
<b>LATEST ESTIMATE - 10/1/15 - DEC</b>					
ROW					\$13,538,062.00
Construction Cost					\$17,826,712.81
Construction Engineering	4.50%				\$802,202.08
Contingency	6.50%				\$1,158,736.33
Indirect	6.20%				\$1,105,256.19
Total Project Cost					\$34,430,969.41
YOE Cost*					\$21,440,668.82
<b>PROPOSED PROGRAMMING</b>					
Funding by Category	Phase	Total	Federal	State	Local
Category 7	Construction	\$21,440,668.82	17,152,535.06		3,430,507.01
<b>TOTAL PROGRAMMED FUNDS</b>		<b>21,440,668.82</b>	<b>17,152,535.06</b>		<b>3,430,507.01</b>

\* based off of the latest construction estimate , requires negotiation and approval of fee by TxDOT. Includes Construction Engineering and Inspection (Local Let). Includes escalation.



# 4.0 Summary of Key Dates on Schedule Prepared By Engineer

## Summary of Important Dates

• Project start date for Reuthinger Portion :	July 02, 2018
• Project start date for Hachar Portion :	July 02, 2018
• Project Scoping for Combined Project submitted and obtains TxDOT approval for type of Document (assumed EA) :	September 10, 2018
• Combined Schematics Approved by TxDOT:	April 05, 2019
• Hold Public Meeting / Workshop:	April 12, 2019
• Hold Public Hearing	June 03, 2019
• TxDOT Approves/Issues FONSI for Combined Project:	June 03, 2019
• Sponsor Procures and Approves Engineer Contract with TxDOT Approval for Combined Project :	May 03, 2019
• Engineer Completes PSE (both Sections) (two separate PSE's) :	January 30, 2020
• TxDOT Approves project for Construction Letting (Both PSE for both Sections) :	April 01, 2020
• Sponsor Advertises Project for Construction (Hachar only, unless funding accelerated for Reuthinger :	April 01, 2020
• Sponsor Award Contract to Construction Contractor (Hachar Portion) :	July 01, 2020
• Construction Completed for Hachar Portion (18m) :	December 30, 2021

**\*Construction Completed for Combined Project  
(if funds available to have one construction contract)  
(30months) – December 30, 2022**

## 4.0 Summary of Key Dates on Schedule Prepared By Engineer

Presently Construction Funds for Hachar NOT available until **September 1, 2020 (FY2021 Funds)**. Construction Funds would need to be accelerated for Hachar by **6 months** and to have Combined Project the Reuthinger Funds (**FY 2023 Funds – September 1, 2022**) would need to be accelerated by **30 months**.

## 5.0 Project Time Frame for Completion Major Milestones of Reflected In Schedule

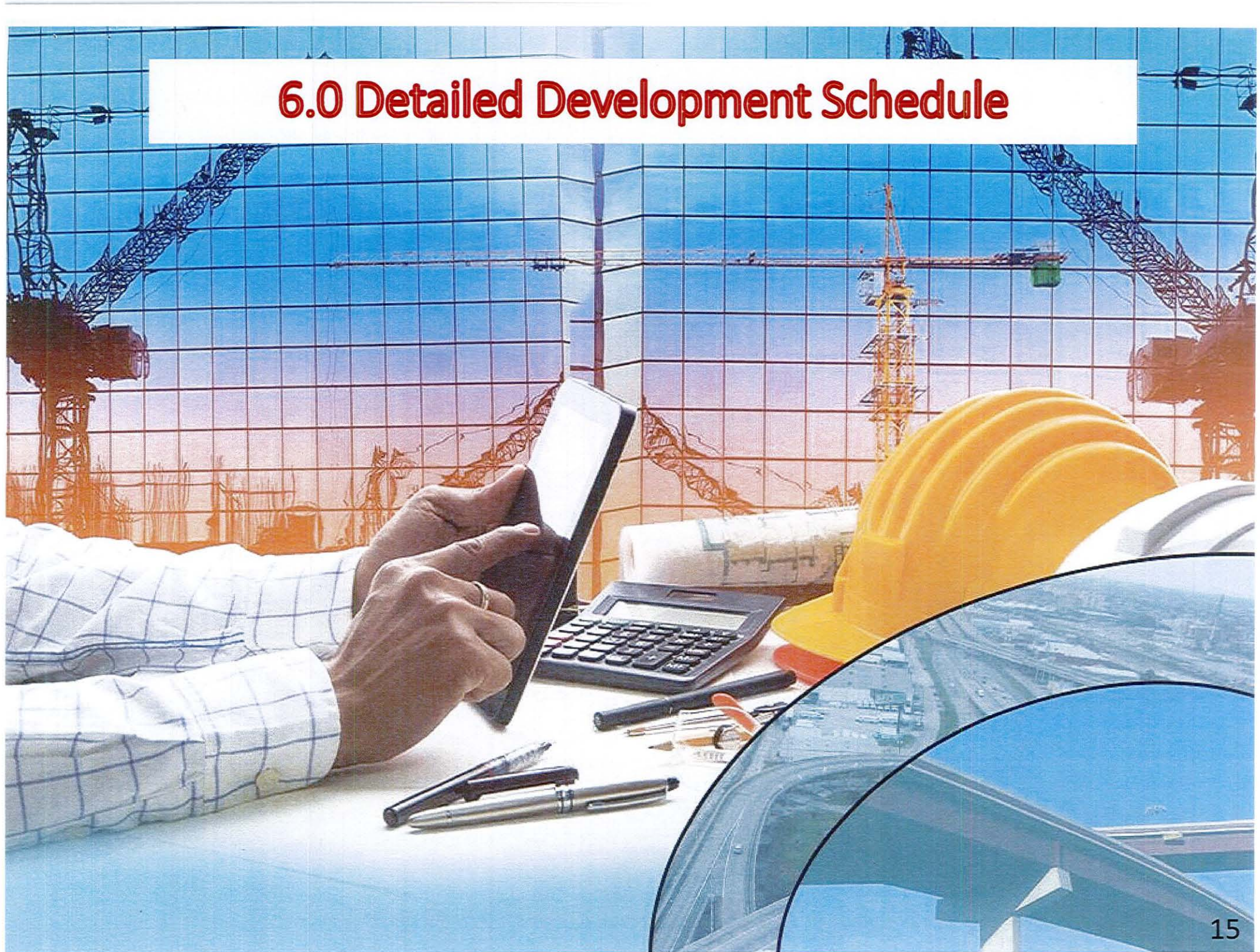
Environmental Clearance  
(FONSI issued) Combined Project - 14 months

Engineer Starts PSE upon Approval of  
Schematic and Complete to 100% PSE - 9 months

Construction Hachar Portion - 18 months

Construction of Combined Project - 30 months

## 6.0 Detailed Development Schedule

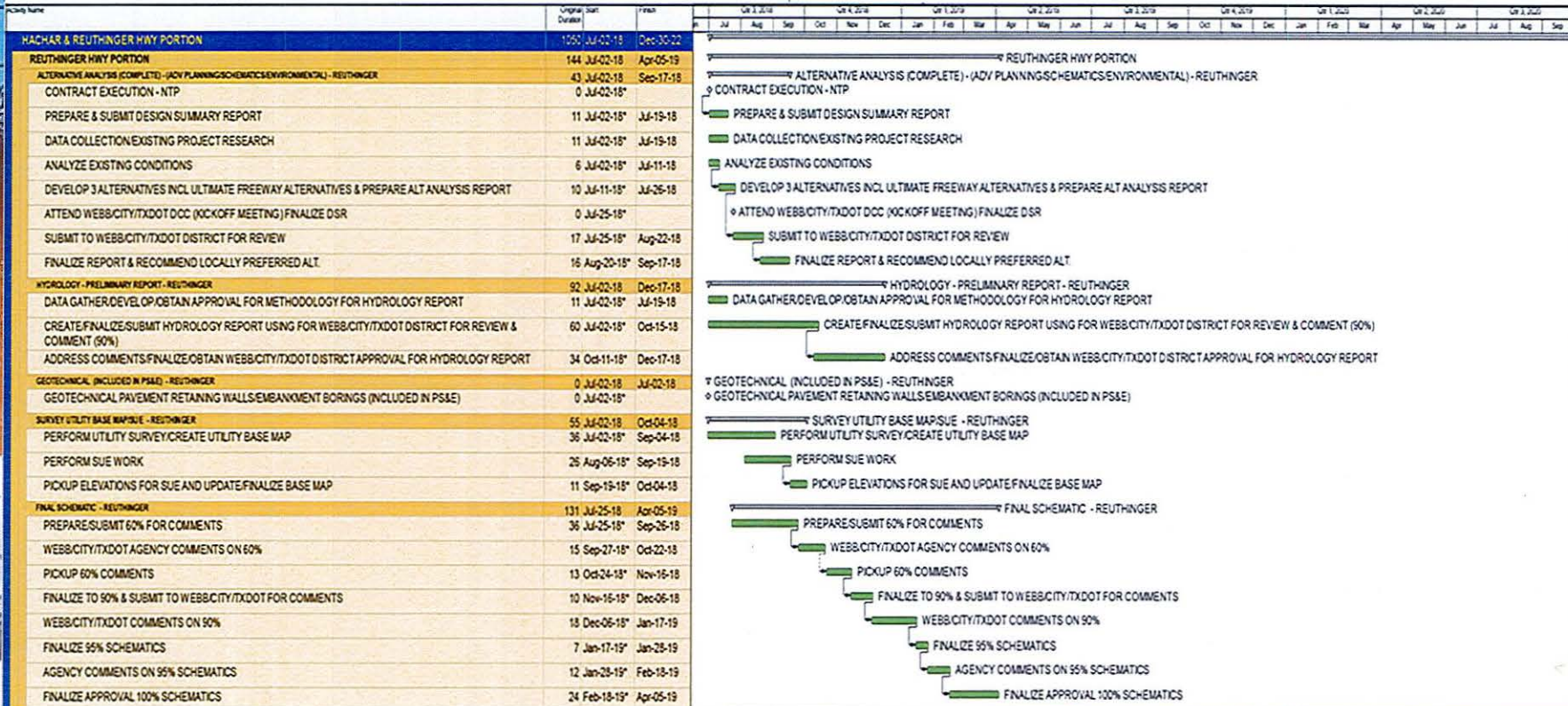




# 6.0 Detailed Development Schedule

DANNENBAUM ENGINEERING CORPORATION  
 PROJECT NO. 5126-01  
 CLIENT: COUNTY OF WEBB  
 PROJECT TITLE: ADVANCED PLANNING HACHAR PORTION

**ATTACHED F**  
 HACHAR / REUTHINGER PORTION HIGHWAY  
 (ADVANCED PLANNING / SCHEMATICS / ENVIRONMENTAL / FONSI)



**Assumptions:**  
 1) Project receives "Environmental Assessment Assignment"  
 2) Env. Tech Memo's: a) Biological Evaluation Form, b) Water Reservoir, c) Community Impact Assessment, d) Hazardous Material Initial Site Survey, e) Indirect & Cumulative Impact, f) Archaeological Impact, h) Historic Resources  
 3) Assumes no wetlands; endangered species or additional archaeological testing

**Assumptions (cont):**  
 4) Construction Phase Segment No. 1 & 2 together contingent upon construction funding

<span style="background-color: #FFD700; border: 1px solid black; display: inline-block; width: 15px; height: 10px;"></span> - REUTHINGER PORTION OF HACHAR HWY	<span style="background-color: #90EE90; border: 1px solid black; display: inline-block; width: 15px; height: 10px;"></span> - COMBINED REUTHINGER / HACHAR - ONE DOCUMENT
<span style="background-color: #ADD8E6; border: 1px solid black; display: inline-block; width: 15px; height: 10px;"></span> - HACHAR PORTION OF HACHAR HWY	<span style="background-color: #D3D3D3; border: 1px solid black; display: inline-block; width: 15px; height: 10px;"></span> - PS&E COMBINED (PS&E PACKAGE 1&2) (REUTHINGER & HACHAR)
<span style="background-color: #FF69B4; border: 1px solid black; display: inline-block; width: 15px; height: 10px;"></span> - CONSTRUCTION PHASE (SEGMENTS 1 & 2 TOGETHER)	

# 6.0 Detailed Development Schedule

DANNENBAUM ENGINEERING CORPORATION  
 PROJECT NO. 5126-01  
 CLIENT: COUNTY OF WEBB  
 PROJECT TITLE: ADVANCED PLANNING HACHAR PORTION

**ATTACHED F**  
 HACHAR / REUTHINGER PORTION HIGHWAY  
 (ADVANCED PLANNING / SCHEMATICS / ENVIRONMENTAL / FONSI)

HACHAR HWY PORTION	220 Jul-02-18	Aug-30-19	HACHAR HWY PORTION
ALTERNATIVE ANALYSIS (COMPLETE) - (ADV PLANNING/SCHEMATICS/ENVIRONMENTAL) - HACHAR	43 Jul-02-18	Sep-17-18	ALTERNATIVE ANALYSIS (COMPLETE) - (ADV PLANNING/SCHEMATICS/ENVIRONMENTAL) - HACHAR
CONTRACT EXECUTION - NTP	0 Jul-02-18*		CONTRACT EXECUTION - NTP
PREPARE & SUBMIT DESIGN SUMMARY REPORT	11 Jul-02-18*	Jul-19-18	PREPARE & SUBMIT DESIGN SUMMARY REPORT
DATA COLLECTION EXISTING PROJECT RESEARCH	11 Jul-02-18*	Jul-19-18	DATA COLLECTION EXISTING PROJECT RESEARCH
ANALYZE EXISTING CONDITIONS	6 Jul-02-18*	Jul-11-18	ANALYZE EXISTING CONDITIONS
DEVELOP 3 ALTERNATIVES INCL ULTIMATE FREEWAY ALTERNATIVES & PREPARE ALTERNATIVES ANALYSIS RE	10 Jul-11-18*	Jul-26-18	DEVELOP 3 ALTERNATIVES INCL ULTIMATE FREEWAY ALTERNATIVES & PREPARE ALTERNATIVES ANALYSIS REPORT
ATTEND WEBB/CITY/TXDOT DCC (KICKOFF MEETING) FINALIZE DSR	0 Jul-25-18*		ATTEND WEBB/CITY/TXDOT DCC (KICKOFF MEETING) FINALIZE DSR
SUBMIT TO WEBB/CITY/TXDOT DISTRICT FOR REVIEW	17 Jul-25-18*	Aug-22-18	SUBMIT TO WEBB/CITY/TXDOT DISTRICT FOR REVIEW
FINALIZE REPORT & RECOMMEND LOCALLY PREFERRED ALT.	16 Aug-20-18*	Sep-17-18	FINALIZE REPORT & RECOMMEND LOCALLY PREFERRED ALT.
HYDROLOGY - PRELIMINARY REPORT - HACHAR	92 Jul-02-18	Dec-17-18	HYDROLOGY - PRELIMINARY REPORT - HACHAR
DATA GATHER/DEVELOP/OBTAIN APPROVAL FOR METHODOLOGY FOR HYDROLOGY REPORT	11 Jul-02-18*	Jul-19-18	DATA GATHER/DEVELOP/OBTAIN APPROVAL FOR METHODOLOGY FOR HYDROLOGY REPORT
CREATE/FINALIZE/SUBMIT HYDROLOGY REPORT USING FOR WEBB/CITY/TXDOT DISTRICT FOR REVIEW & COA	60 Jul-02-18*	Oct-15-18	CREATE/FINALIZE/SUBMIT HYDROLOGY REPORT USING FOR WEBB/CITY/TXDOT DISTRICT FOR REVIEW & COMMENT (90%)
ADDRESS COMMENTS/FINALIZE/OBTAIN WEBB/CITY/TXDOT DISTRICT APPROVAL FOR HYDROLOGY REPORT	34 Oct-11-18*	Dec-17-18	ADDRESS COMMENTS/FINALIZE/OBTAIN WEBB/CITY/TXDOT DISTRICT APPROVAL FOR HYDROLOGY REPORT
GEOTECHNICAL (INCLUDED IN PS&E) - HACHAR	0 Jul-02-18	Jul-02-18	GEOTECHNICAL (INCLUDED IN PS&E) - HACHAR
GEOTECHNICAL PAVEMENT RETAINING WALLS/EMBANKMENT BORINGS (INCLUDED IN PS&E)	0 Jul-02-18*		GEOTECHNICAL PAVEMENT RETAINING WALLS/EMBANKMENT BORINGS (INCLUDED IN PS&E)
FINALIZE SURVEY UTILITY BASE MAP/SUE (COMPLETED) - HACHAR	56 Jul-02-18	Oct-08-18	FINALIZE SURVEY UTILITY BASE MAP/SUE (COMPLETED) - HACHAR
PERFORM UTILITY SURVEY/CREATE UTILITY BASE MAP - (COMPLETED)	36 Jul-02-18*	Sep-04-18	PERFORM UTILITY SURVEY/CREATE UTILITY BASE MAP - (COMPLETED)
PERFORM SUE WORK	26 Aug-06-18*	Sep-19-18	PERFORM SUE WORK
PICKUP ELEVATIONS FOR SUE AND UPDATE/FINALIZE BASE MAP	11 Sep-20-18*	Oct-08-18	PICKUP ELEVATIONS FOR SUE AND UPDATE/FINALIZE BASE MAP

Assumptions:  
 1) Project receives "Environmental Assessment Assignment"  
 2) Env. Tech Memo's: a) Biological Evaluation Form, b) Water Reservoir, c) Community Impact Assessment, d) Hazardous Material Initial Site Survey, e) Indirect & Cumulative Impact, f) Archaeological Impact, h) Historic Resources  
 3) Assumes no wetlands; endangered species or additional archaeological testing

Assumptions (cont):  
 4) Construction Phase Segment No. 1 & 2 together contingent upon construction funding

■ - REUTHINGER PORTION OF HACHAR HWY    ■ - COMBINED REUTHINGER / HACHAR - ONE DOCUMENT  
■ - HACHAR PORTION OF HACHAR HWY    ■ - PS&E COMBINED (PS&E PACKAGE 1&2) (REUTHINGER & HACHAR)  
■ - CONSTRUCTION PHASE (SEGMENTS 1 & 2 TOGETHER)

# 6.0 Detailed Development Schedule

DANNENBAUM ENGINEERING CORPORATION  
 PROJECT NO. 5126-01  
 CLIENT: COUNTY OF WEBB  
 PROJECT TITLE: ADVANCED PLANNING HACHAR PORTION

**ATTACHED F**  
 HACHAR / REUTHINGER PORTION HIGHWAY  
 (ADVANCED PLANNING / SCHEMATICS / ENVIRONMENTAL / FONSI)

<b>FINALIZE FINAL SCHEMATIC - HACHAR (INCLUDING COMBINED OF REUTHINGER)</b>	131 Jul-25-18	Apr-05-19
PREPARE/SUBMIT 60% FOR COMMENTS (COMBINED)	36 Jul-25-18*	Sep-26-18
WEBB/CITY/TXDOT AGENCY COMMENTS ON 60% (COMBINED)	15 Sep-27-18*	Oct-22-18
PICKUP 60% COMMENTS (COMBINED)	13 Oct-24-18*	Nov-16-18
FINALIZE TO 90% & SUBMIT TO WEBB/CITY/TXDOT FOR COMMENTS (COMBINED)	10 Nov-16-18*	Dec-06-18
WEBB/CITY/TXDOT COMMENTS ON 90% (COMBINED)	18 Dec-06-18*	Jan-17-19
FINALIZE 95% SCHEMATICS (COMBINED)	7 Jan-17-19*	Jan-28-19
AGENCY COMMENTS ON 95% SCHEMATICS (COMBINED)	12 Jan-28-19*	Feb-13-19
FINALIZE APPROVAL 100% SCHEMATICS (COMBINED)	24 Feb-18-19*	Apr-05-19
<b>PUBLIC INVOLVEMENT - PUBLIC MEETING (INC. COMBINING WITH CITY REP. HACHAR PORTION)</b>	57 Feb-22-19	Jun-13-19
CONDUCT MEETING WITH UTILITIES/AFFECTED AGENCIES/LANDOWNERS/OTHER STAKEHOLDERS	15 Feb-22-19*	Mar-22-19
PREPARE EXHIBITS/MAIL OUT LIST ETC. FOR PUBLIC MEETINGS	15 Feb-22-19*	Mar-22-19
ADVERTISE FOR PUBLIC MEETING	8 Mar-20-19*	Apr-03-19
HOLD PUBLIC MEETING/WORKSHOP	0 Apr-12-19*	
SUBMIT/OBTAIN WEBB/CITY/TXDOT APPROVAL OF FINAL PUBLIC MEETING SUMMARY REPORT	32 Apr-12-19*	Jun-13-19
<b>DEVELOP ENVIRON DOC (INCLUDED COMBINING W/ HACHAR PORTION)</b>	220 Jul-02-18	Aug-30-19
PROJECT SCOPING FOR ENVIRONMENTAL (EA) ASSESSMENT & PREPARE ALL END DOCS TO 30%	39 Jul-02-18*	Sep-10-18
PREPARE ALL TECH MEMOS, RESEARCH AND FIELD WORK FOR EA & SUBMIT TO WEBB/CITY/TXDOT FOR APPR	71 Jul-02-18*	Nov-02-18
WEBB/CITY/TXDOT REVIEW/COMMENTS ON 95% ENVIRO DOCS	25 Nov-05-18*	Dec-31-18
FINALIZE 95% TECH MEMOS/OBTAIN WEBB/CITY/TXDOT APPROVAL FOR EA FOR AFFORDING PUBLIC HEARING	27 Dec-17-18*	Feb-12-19
WEBB/CITY/TXDOT REVIEW 100% ENV TECH MEMOS/EA APPROVES FOR THE AFFORDING OF A PUBLIC HEARING	41 Feb-12-19*	May-01-19
PUBLIC HEARING EA ADVERTISEMENT	16 May-02-19*	Jun-03-19
TXDOT APPROVES EAFONSI	47 Jun-03-19*	Aug-30-19



**Assumptions:**  
 1) Project receives "Environmental Assessment Assignment"  
 2) Env. Tech Memo's: a) Biological Evaluation Form, b) Water Reservoir, c) Community Impact Assessment, d) Hazardous Material Initial Site Survey, e) Indirect & Cumulative Impact, f) Archaeological Impact, g) Historic Resources  
 3) Assumes no wetlands; endangered species or additional archaeological testing

**Assumptions (cont):**  
 4) Construction Phase Segment No. 1 & 2 together contingent upon construction funding

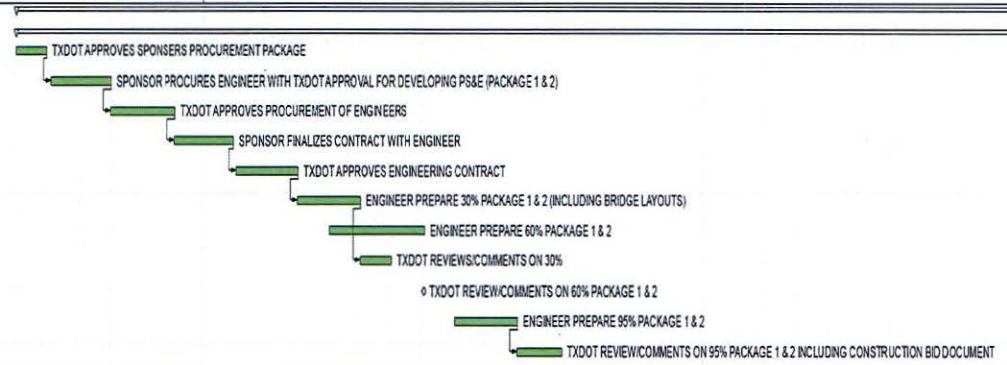
■ - REUTHINGER PORTION OF HACHAR HWY    ■ - COMBINED REUTHINGER / HACHAR - ONE DOCUMENT  
■ - HACHAR PORTION OF HACHAR HWY    ■ - PS&E COMBINED (PS&E PACKAGE 1&2) (REUTHINGER & HACHAR)  
■ - CONSTRUCTION PHASE (SEGMENTS 1 & 2 TOGETHER)

# 6.0 Detailed Development Schedule

**DANNENBAUM ENGINEERING CORPORATION**  
 PROJECT NO. 5126-01  
 CLIENT: COUNTY OF WEBB  
 PROJECT TITLE: ADVANCED PLANNING HACHAR PORTION

**ATTACHED F**  
 HACHAR / REUTHINGER PORTION HIGHWAY  
 (ADVANCED PLANNING / SCHEMATICS / ENVIRONMENTAL / FONSI)

PREPARE PS&E COMBINED PROJECT (PS&E PACKAGE 1&2) (REUTHINGER & HACHAR)	1033 Aug-01-18	Dec-30-22
COMBINED PROJECT (REUTHINGER & HACHAR)	1033 Aug-01-18	Dec-30-22
TXDOT APPROVES SPONSERS PROCUREMENT PACKAGE	18 Aug-01-18*	Aug-30-18
SPONSOR PROCURES ENGINEER WITH TXDOT APPROVAL FOR DEVELOPING PS&E (PACKAGE 1 & 2)	35 Sep-04-18*	Nov-01-18
TXDOT APPROVES PROCUREMENT OF ENGINEERS	28 Nov-01-18*	Jan-03-19
SPONSOR FINALIZES CONTRACT WITH ENGINEER	31 Jan-03-19*	Mar-01-19
TXDOT APPROVES ENGINEERING CONTRACT	33 Mar-04-19*	May-03-19
ENGINEER PREPARE 30% PACKAGE 1 & 2 (INCLUDING BRIDGE LAYOUTS)	31 May-03-19*	Jul-03-19
ENGINEER PREPARE 60% PACKAGE 1 & 2	48 Jun-03-19*	Sep-03-19
TXDOT REVIEW/COMMENTS ON 30%	17 Jul-03-19*	Aug-02-19
TXDOT REVIEW/COMMENTS ON 60% PACKAGE 1 & 2	0 Sep-03-19*	
ENGINEER PREPARE 95% PACKAGE 1 & 2	32 Oct-03-19*	Dec-03-19
TXDOT REVIEW/COMMENTS ON 95% PACKAGE 1 & 2 INCLUDING CONSTRUCTION BID DOCUMENT	24 Dec-03-19*	Jan-15-20



**Assumptions:**  
 1) Project receives "Environmental Assessment Assignment"  
 2) Env. Tech Memo's: a) Biological Evaluation Form, b) Water Resource, c) Community Impact Assessment, d) Hazardous Material Initial Site Survey, e) Indirect & Cumulative Impact, f) Archaeological Impact, h) Historic Resources  
 3) Assumes no wetlands; endangered species or additional archaeological testing

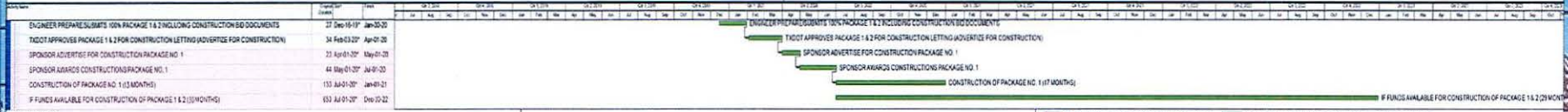
**Assumptions (cont):**  
 4) Construction Phase Segment No. 1 & 2 together contingent upon construction funding

■ - REUTHINGER PORTION OF HACHAR HWY     ■ - COMBINED REUTHINGER / HACHAR - ONE DOCUMENT  
■ - HACHAR PORTION OF HACHAR HWY      - PS&E COMBINED (PS&E PACKAGE 1&2) (REUTHINGER & HACHAR)  
■ - CONSTRUCTION PHASE (SEGMENTS 1 & 2 TOGETHER)

# 6.0 Detailed Development Schedule

**DANNENBAUM ENGINEERING CORPORATION**  
 PROJECT NO. 5126-01  
 CLIENT: COUNTY OF WEBB  
 PROJECT TITLE: ADVANCED PLANNING HACHAR PORTION

**ATTACHED F**  
 HACHAR / REUTHINGER PORTION HIGHWAY  
 (ADVANCED PLANNING / SCHEMATICS / ENVIRONMENTAL / FONSI)



**Assumptions:**  
 1) Project receives "Environmental Assessment Assignment"  
 2) Env. Tech Memo's: a) Biological Evaluation Form, b) Water Reservoir, c) Community Impact Assessment, d) Hazardous Material Initial Site Survey, e) Indirect & Cumulative Impact, f) Archaeological Impact, h) Historic Resources  
 3) Assumes no wetland, endangered species or additional archaeological testing

**Assumptions (cont):**  
 4) Construction Phase Segment No. 1 & 2 together contingent upon construction funding

<span style="display: inline-block; width: 15px; height: 15px; background-color: #FFD700; border: 1px solid black;"></span> - REUTHINGER PORTION OF HACHAR HWY	<span style="display: inline-block; width: 15px; height: 15px; background-color: #90EE90; border: 1px solid black;"></span> - COMBINED REUTHINGER / HACHAR - ONE DOCUMENT
<span style="display: inline-block; width: 15px; height: 15px; background-color: #ADD8E6; border: 1px solid black;"></span> - HACHAR PORTION OF HACHAR HWY	<span style="display: inline-block; width: 15px; height: 15px; background-color: #D3D3D3; border: 1px solid black;"></span> - PS&E COMBINED (PS&E PACKAGE 1&2) (REUTHINGER & HACHAR)
<span style="display: inline-block; width: 15px; height: 15px; background-color: #FF69B4; border: 1px solid black;"></span> - CONSTRUCTION PHASE (SEGMENTS 1 & 2 TOGETHER)	