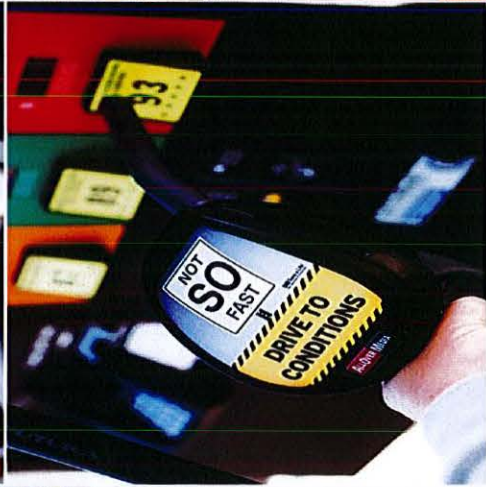
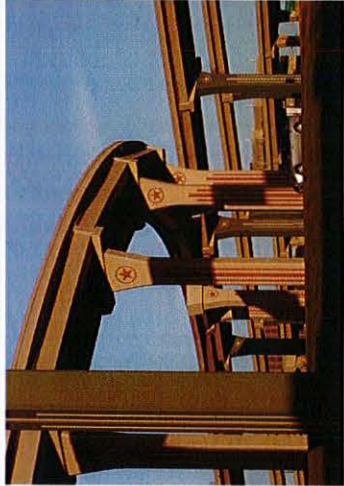




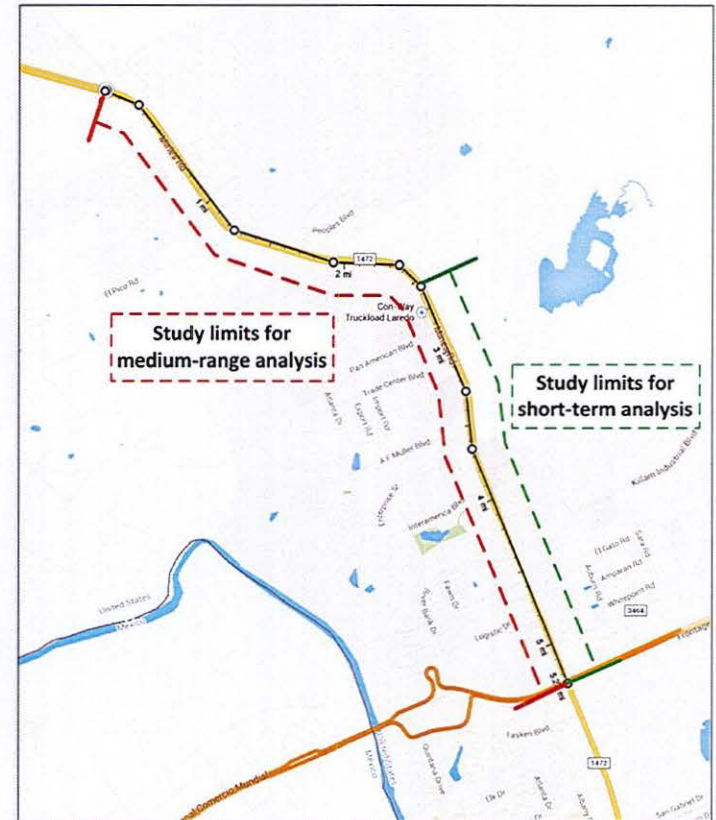
TEXAS DEPARTMENT OF TRANSPORTATION



BIKE LANES ON FM
1472

Bike Lanes on FM 1472

- From 2012 AASHTO *Guide for the Development of Bicycle Facilities*, three types of bikeways are potentially suitable
 1. Shared lanes (wide outside lanes)
 2. Bike lanes (Re-stripe)
 3. Shared use path: adjacent to roadways (sidepath)
- 2010 HCM methodology for bicycle LOS (analysis for 1 and 2)



Bike Lanes on FM 1472

Bike Lane Analysis LOS at Three Locations along FM 1472 – AM Peak

	South of Killam Ind. Blvd.		South of Interamerica Blvd.		South of Trade Center Blvd.	
	SB	NB	SB	NB	SB	NB
Posted Speed Limit	50	50	50	50	55	60
Percent Trucks	19	19	18	18	23	23
Percent of segment with occupied on-highway parking	0	0	0	0	0	0
Pavement rating	3	3	3	3	3	3
Flow rate in outside lane	374.4	550.8	471.1	882.2	305.0	645.6
Effective width of outside lane	24.00	24.00	24.00	24.00	24.00	24.00
Effective speed factor	4.62	4.62	4.62	4.62	4.79	4.94
Bicycle LOS Score	9.12	9.32	8.68	9.00	11.85	12.58
Bicycle LOS	F	F	F	F	F	F

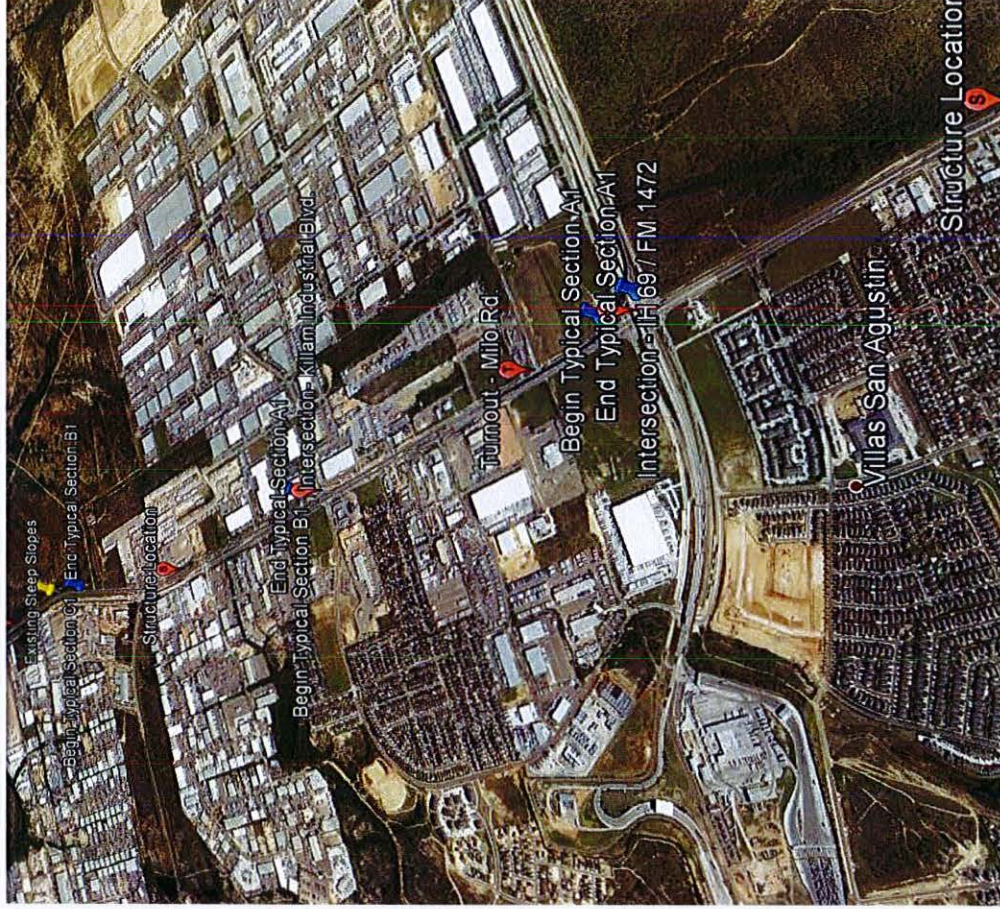
- Max truck percentage for HCM methodology is **25%**.
- Truck percentage in noon and PM peaks are **30%-50%** at most locations (not applicable for HCM analysis)
- Bicycle LOS scores 5.5 and **LOS E** are considered as cutoff score for a feasible implementation

Sidepath Considerations/ Constrains

- Railroad Agreement (Closed crossing)
- Bridge Widening
- High volume and high speed on adjacent roadway
- Traffic Signals
- Driveways/ ADA and Intersections
- Existing Utilities
- Drainage/ Storm Sewer
- Used to connect local streets that are bicycle routes
- Must be connected to local street network with bikeways available on connecting streets
- Sidewalks should not be utilized as a shared use path

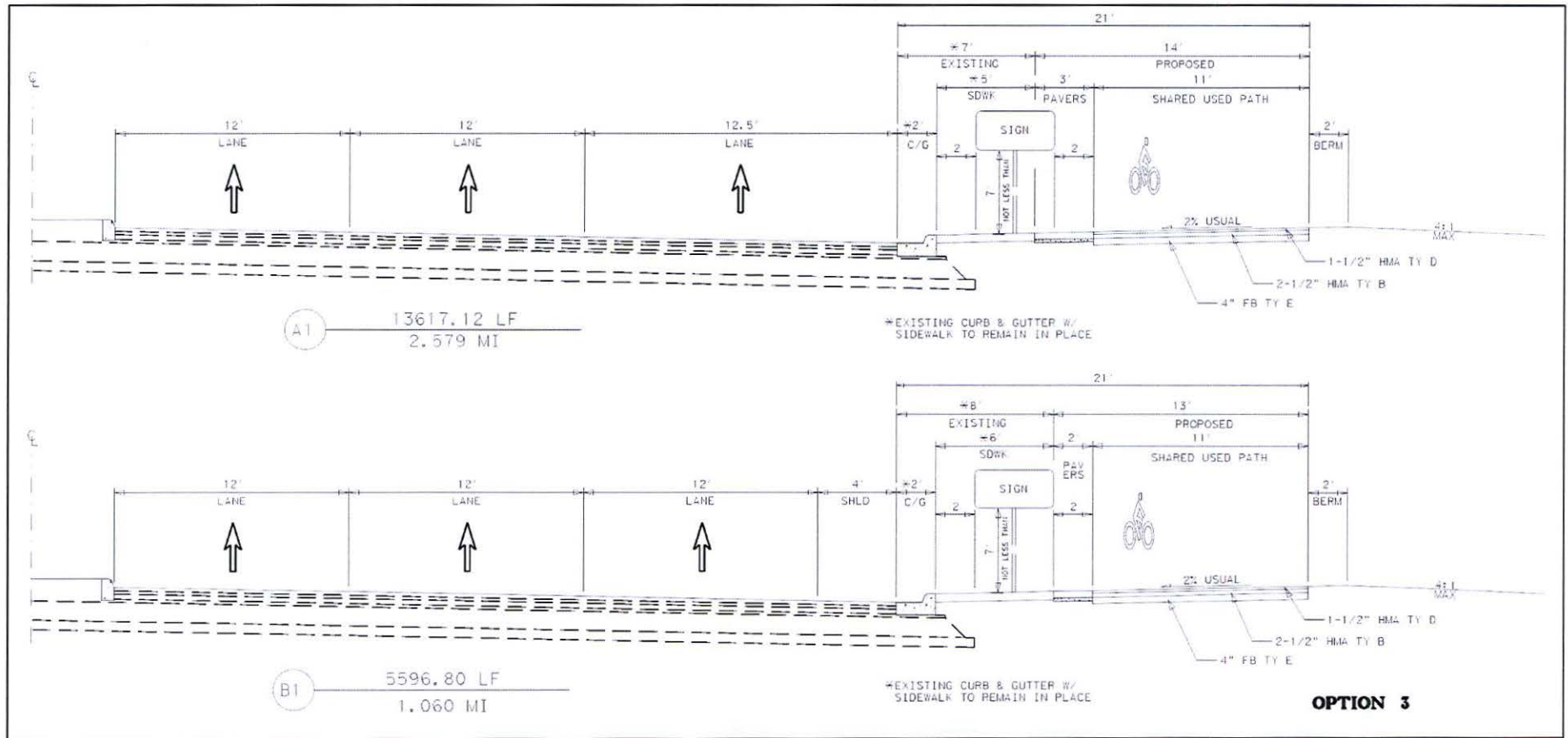
Bike Lanes on FM 1472

Bike Lane – From IH-35 to 0.3 Mi North of Mueller Blvd.



Bike Lanes on FM 1472

Sidepath Option



- Preliminary Estimated cost without contingencies \$ 1.6 Mill

Constraints North of Muller Blvd

- Upgrade FM 1472 to Urban Setting (Curb and Gutter)
- Additional ROW
- Bridge Widening
- High volume and high speed on adjacent roadway
- Steep Slopes
- Existing Utilities
- Drainage/ Storm Sewer

Questions?