

Laredo Urban Transportation Study

Metropolitan Planning Organization Policy Committee

Notice of Public Meeting

City of Laredo City Hall
City Council Chambers
1110 Houston Street
Laredo, Texas
August 21, 2017
1:30 p.m.

MEETING AGENDA

- I. CHAIRPERSON TO CALL MEETING TO ORDER
- II. CHAIRPERSON TO CALL ROLL
- III. CITIZEN COMMENT

Speakers are required to fill out witness cards, which must be submitted to MPO Staff no later than 15 minutes after the start of the meeting. Speakers shall identify themselves at the microphone. Comments are limited to three (3) minutes per speaker. No more than three (3) persons will be allowed to speak on any side of an issue. Should there be more than three (3) people who wish to speak on a specific issue, they should select not more than three (3) representatives to speak on their behalf. The presiding officer may further limit public comment in the interest of order or time. Speakers may not transfer their minutes to any other speaker. Comments should be relevant to City business and delivered in a professional manner. No derogatory remarks shall be permitted.

IV. ITEMS REQUIRING POLICY COMMITTEE ACTION

- A. Approval of the minutes for the meeting held on July 17, 2017.
- B. Receive public testimony, initiate an additional 10 day public review and comment period and approve Resolution No. MPO 2017-08 adopting the following proposed amendment(s) of the 2015-2040 Metropolitan Transportation Plan (MTP), conditional to receipt of no significant comment:
 1. Amending Table 12-10, entitled Roadway and Bicycle/Pedestrian Project Summary, Figure 12-1, entitled Roadway and Bicycle/Pedestrian Projects, Table 12-11, entitled Roadway Projects, Figure 13-1, entitled Natural Resources and Federally Funded Projects, Figure 13-2, entitled Cultural Resources and Federally Funded Projects, Figure 13-3, entitled Low Income Areas and Federally Funded Projects, Table 13-1, entitled Federally Funded Projects Environmental

Assessment Results, Table 13-3, entitled Federally Funded Projects and Environmental Justice Populations; and, Figure 13-4 entitled Colonias and Federally Funded Projects as necessary to incorporate the following revisions:

- a) **Adding** project CSJ 0086-14-076 for the construction of the Shiloh Road Overpass on US 59, with an estimated construction cost is \$18,539,712. Estimated letting date FY 2023.
 - b) **Adding** project CSJ 0086-14-079 for the construction of the University Overpass on U.S. 59, with an estimated project construction cost of \$14,648,370 . Estimated letting date is FY 2022.
 - c) **Adding** of project CSJ 0086-14-075 for the construction of the Del Mar Overpass on U.S. 59, with an estimated construction cost of \$20,496,476. Estimated letting date is FY 2021.
 - d) **Adding** Vallecillo Road project, identified as project X-10, intended to develop schematic and environmental for a 5 lane roadway, from FM 1472 to IH35. Engineering by RMA's general engineering consultant is \$300,000 and is in progress.
 - e) **Revising** project CSJ 0086-14-077 for the construction of the Airport Overpass on US 59 at the International Airport , with an estimated project construction cost of \$14,785,990, by changing estimated letting date from fiscal year (FY) 2018 to FY 2024.
 - f) **Revising** project CSJ 0086-14-078 for the construction of the Jacaman Road Overpass on US 59, with an estimated project construction cost of \$19,691,424, by changing letting date from fiscal year(FY) 2020 to FY 2021.
 - g) **Revising** project #4/CSJ 0086-14-058/CSJ 0086-14-072 for the upgrade to interstate standards, including overpasses at Shiloh, University and Del Mar by removing identifier CSJ 0086-14-058, revising scope to remove the three overpasses and revising funding accordingly. The overpass projects at Shiloh, University and Del Mar will be identified independently as indicated above. Project CSJ 0086-14-058 for the preliminary schematic, environmental, ROW surveying/mapping and PS&E for Loop 20 from east of International Blvd. to US 59/Loop 20 is listed independently and has already let.
- C. Discussion with possible action on the TxDOT letter dated July 21, 2017 regarding the Advance Acquisition Process/Alternatives along US 59/Loop 20.
- D. Discussion with possible action to include High Occupancy Vehicles (HOV) lanes for FM 1472 (Mines Road).

1. Report technical memorandum developed by TxDOT on steps necessary to implement HOV Lanes on Mines Road.
- E. Discussion with possible action to restripe and/or add Right-of-Way for bicycle on FM 1472 (Mines Road).
1. Report by TxDOT on procedures necessary to implement a bike lane on Mines Road.
- F. Discussion with possible action to place digital signage on FM 1472 (Mines Road) to notify the driving public of congestion.
1. Report by TxDOT on possible sign locations, cost estimates, and funding sources for digital signage on Mines Road.
- G. Discussion with possible action on the \$2.4 million, Proposition 1, Category 2 funds allocated to project CSJ 0086-14-077, intended to provide for construction of an interchange at the international airport, with an estimated construction cost of \$14,785,990. Latest estimated letting date is fiscal year (FY) 2024.
- H. Discussion with possible action on Hachar Road.
- V. REPORT(S) AND PRESENTATIONS (No action required)
- A. Presentation by Webb County intended to visually demonstrate the layout of the Airport overpass designed so as to avoid encroachment on the Armory or the Airport's property.
 - B. TxDOT report on the status of ongoing construction projects.
 - C. TxDOT report on the development of the grade separation at IH 35 and the Union Pacific Railroad, the Uniroyal grade separation, and any other similar projects.
 - D. Status report on the Regional Mobility Authority (RMA).
 - E. Letting date for Flecha Lane/Las Cruces realignment project CSJ 0922-33-076 is proposed to be moved from September 2017 (FY 2018) to August 2018 (FY 2018.)

VI. ADJOURNMENT

THIS NOTICE WAS POSTED AT THE MUNICIPAL GOVERNMENT OFFICES, 1110 HOUSTON STREET, LAREDO, TEXAS, AT A PLACE CONVENIENT AND READILY ACCESSIBLE TO THE PUBLIC AT ALL TIMES. SAID NOTICE WAS POSTED BY AUGUST 18, 2017, BY 1:30 P.M.

All meetings of the MPO Committee are open to the public. Persons who plan to attend this meeting and who may need auxiliary aid or services, such as: interpreters for persons who are deaf or hearing impaired, readers of large print or Braille, or a translator for the Spanish language are requested to contact Ms. Vanessa Guerra, City Planning, 1120 San Bernardo

Ave. at (956) 794-1613, vguerra@ci.laredo.tx.us, at least five working days prior to the meeting so that appropriate arrangements can be made. Materials in Spanish may also be provided upon request.

Disability Access Statement - This meeting is wheelchair accessible. The accessible entrances are located at 1110 Victoria and 900 Flores. Accessible parking spaces are located at City Hall, 1110 Victoria.

Ayuda o Servicios Auxiliares: Todas las reuniones del Comité del MPO están abiertas al público. Personas que planean asistir a esta reunión y que pueden necesitar ayuda o servicios, auxiliares como: intérpretes para personas con discapacidad auditiva, lectores de letra grande o en Braille, o un traductor para el idioma español deben comunicarse con la Sra. Vanessa Guerra, en el Departamento de Planificación de la Ciudad, 1120 San Bernardo Ave. al (956) 794-1613, vguerra@ci.laredo.tx.us, al menos cinco días hábiles antes de la reunión para que los arreglos apropiados se pueden hacer. Materiales in español se proveerán a petición.

Declaración de Acceso a la Discapacidad: Esta reunión es accesible para sillas de ruedas. Las entradas accesibles están ubicadas en 1110 Victoria y 900 Flores. Las plazas de aparcamiento accesibles se encuentran en el Ayuntamiento, 1110 Victoria.

Información en Español: Si usted desea esta información en español o si desea explicación sobre el contenido, por favor llámenos al teléfono (956) 794-1623 o comuníquese con nosotros mediante correo electrónico a vguerra@ci.laredo.tx.us.

CITY OF LAREDO REPRESENTATIVES:

Honorable Pete Saenz, Mayor and LUTS Chairperson
Honorable Charlie San Miguel, City Councilmember, District VI
Honorable George Altgelt, City Councilmember, District VII

LAREDO MASS TRANSIT BOARD REPRESENTATIVE:

Honorable Roberto Balli, City Councilmember, District VIII

COUNTY OF WEBB REPRESENTATIVES:

Honorable Tano E. Tijerina, Webb County Judge
Honorable John Galo, Webb County Commissioner, Pct. 3
Honorable Jaime Canales, Webb County Commissioner, Pct. 4

STATE REPRESENTATIVES:

Mr. Pete Alvarez, P.E., District Engineer
Ms. Melisa Montemayor, District Administrator

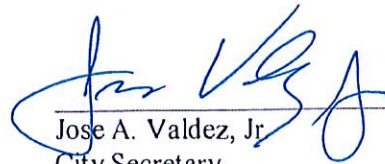
**** EX-OFFICIO ****

Honorable Judith Zaffirini, State Senator, District 21
Honorable Richard Raymond, State Representative, District 42
Honorable Tracy O. King, State Representative, District 80



(FOR)

Nathan R. Bratton
MPO Director



Jose A. Valdez, Jr.
City Secretary

RECEIVED

2017 AUG 17 AM 11:06

CITY SECRETARY'S OFFICE

The first part of the document discusses the importance of maintaining accurate records of all transactions. It emphasizes that every entry, no matter how small, should be recorded to ensure the integrity of the financial data. This includes not only sales and purchases but also expenses and income. The text suggests that a consistent and thorough record-keeping system is essential for identifying trends and making informed decisions.

In the second section, the author addresses the challenges of budgeting and financial planning. It notes that many businesses struggle to stay within their budgets due to unforeseen expenses or changes in market conditions. The advice given is to create a flexible budget that can be adjusted as needed, and to regularly review financial performance against the budget. This proactive approach helps in identifying potential issues before they become major problems.

The third part of the document focuses on the role of technology in modern accounting. It highlights how software solutions have revolutionized the way businesses manage their finances, from automating routine tasks to providing real-time insights into financial health. The text encourages businesses to invest in reliable accounting software and to ensure that their staff is properly trained to use these tools effectively.

Finally, the document concludes with a discussion on the importance of seeking professional advice. It acknowledges that while many business owners have a basic understanding of accounting, complex situations often require the expertise of a professional accountant. The text suggests that consulting with an accountant can help in optimizing tax strategies, ensuring compliance with regulations, and providing a clear overview of the business's financial position.

Laredo Urban Transportation Study

Metropolitan Planning Organization Policy Committee
City of Laredo Council Chambers
1110 Houston St. -Laredo, Texas



MINUTES OF THE JULY 17, 2017 MEETING

I. CHAIRPERSON TO CALL MEETING TO ORDER

Judge Tijerina, Vice- Chairperson, called the meeting to order at 2:03 p.m.

C.M. Alvarez made a motion to **excuse** members absent.

Second: C.M. San Miguel
For: 5
Against: 0
Abstained: 0

Motion carried unanimously

Regular members present:

Honorable Tano E. Tijerina, Webb County Judge
Honorable Charlie San Miguel, City Councilmember, District VI
Honorable George Altgelt, City Councilmember, District VII
Honorable Roberto Balli, City Councilmember, District VIII
Pete Alvarez, TxDOT

Regular members absent:

Honorable Pete Saenz, Mayor and LUTS Chairperson
Honorable John Galo, Webb County Commissioner, Pct. 3
Honorable Jaime Canales, Webb County Commissioner, Pct. 4
Melisa Montemayor, TxDOT

Ex-Officio Members Not Present:

Honorable Richard Raymond, State Representative, District 42
Honorable Judith Zaffirini, State Senator, District 21
Honorable Tracy O. King, State Representative, District 80

Staff (Of Participating LUTS Agencies) Present:

City: Nathan R. Bratton, City Planning/LUTS Staff

Vanessa Guerra, City Planning/LUTS Staff
Angie Quijano, City Planning/LUTS Staff
Claudia San Miguel, Transit, El Metro
Rosa Soto, Transit, El Metro
Joe Jackson, Transit, El Metro
Eduardo Bernal, Transit, El Metro

State: Ana Duncan, TxDOT
Alberto Ramirez, TxDOT
Sara Garza, TxDOT
Mike Graham, TxDOT
Danny Magee, TxDOT

County: Luis Perez Garcia, Webb County Engineering
Guillermo Cuellar, Webb County Engineering

Others: Ruben Soto, Regional Mobility Authority (RMA)
Antonio Rodriguez, HNTB, Inc.
Richard Ridings, HNTB, Inc.
Anthony Garza, Dannenbaum Engineering

II. CHAIRPERSON TO CALL ROLL

Nathan R. Bratton, MPO Director, called roll and verified that a quorum existed.

III. COMMITTEE AND DIRECTOR'S REPORTS

The Chairman encouraged those members of the community with transportation related concerns to come to the MPO Policy Committee meetings and share their thoughts with the full committee.

IV. CITIZEN COMMENT

Speakers are required to fill out witness cards, which must be submitted to MPO Staff no later than 15 minutes after the start of the meeting. Speakers shall identify themselves at the microphone. Comments are limited to three (3) minutes per speaker. No more than three (3) persons will be allowed to speak on any side of an issue. Should there be more than three (3) people who wish to speak on a specific issue, they should select not more than three (3) representatives to speak on their behalf. The presiding officer may further limit public comment in the interest of order or time. Speakers may not transfer their minutes to any other speaker. Comments should be relevant to City business and delivered in a professional manner. No derogatory remarks shall be permitted.

V. ITEMS REQUIRING POLICY COMMITTEE ACTION

A. Approval of the minutes for the meeting held on June 19, 2017.

C.M. Altgelt made a motion to **approve** the minutes for the meeting of June 19, 2017.

Second: C.M. San Miguel
For: 5
Against: 0
Abstained: 0

B. Discussion with possible action to include High Occupancy Vehicles (HOV) lanes for FM 1472 (Mines Road).

C.M. Algelt expressed his support for the implementation of an HOV lane on Mines Road.

Pete Alvarez, District Engineer, stated the implementation of HOV lanes on an on-system roadway must follow the appropriate steps.

C.M. Altgelt asked what steps would be necessary to move forward.

Ruben Soto, RMA Chairman, stated the RMA would gladly offer its assistance and resources in the performance of any required studies

C.M. San Miguel requested a technical report be presented identifying the steps necessary for the implementation of HOV lanes.

C.M. Altgelt made a motion to request TxDOT identify the necessary steps necessary for implementation of HOV lanes on Mines Road.

Second: C.M. San Miguel
For: 5
Against: 0
Abstained: 0

Motion carried unanimously

C. Discussion with possible action to restripe and/or add Right-of-Way for bicycle routes on FM 1472 (Mines Road).

C.M. Algelt expressed his support for the implementation of bicycle routes on Mines Road.

C.M. Alvarez stated the initial steps would include: identification of project limits, development of a general project scope, and formulation of preliminary cost estimates.

C.M. Altgelt made a motion requesting TxDOT develop a guidance document identifying procedures necessary for the implementation of a pedestrian bike way from Green Ranch to the terminus of Mines Road.

Second: C.M. San Miguel
For: 5
Against: 0
Abstained: 0

Motion carried unanimously

D. Discussion with possible action to place digital signage on FM 1472 (Mines Road) to notify the driving public of congestion.

C.M. Algelt expressed his support for the installation of intelligent signage to advise those traveling to Mines Road of estimated delays.

C.M. Algelt made a motion directing TxDOT to develop a list of recommended digital/intelligent sign placement locations, cost estimates, and possible revenue sources.

Second: C.M. San Miguel
For: 5
Against: 0
Abstained: 0

Motion carried unanimously

E. Discussion with possible action on the Laredo Bundle and FAST Lane Grant/INFRA Grant application.

C.M. Alvarez, TxDOT, stated TxDOT in conjunction with the City of Laredo would be re-submitting the grant application. The proposed Laredo bundle would include the construction of 5 overpasses on Loop 20 as well as the construction of a 3rd lane on I-69.

F. Receive public testimony and approve Resolution No. MPO 2017-06, adopting the proposed amendment(s) of the 2017-2020 Transportation Improvement Program (TIP):

- 1. Removal of project CSJ 0086-14-077 intended to provide for construction of an interchange at the international airport, with an estimated construction cost of \$14,785,990. *Rationale:* Latest estimated letting date is fiscal year (FY) 2024, which is outside of the current TIP horizon.**

C.M. Balli made a motion to open a public hearing.

Second: C.M. San Miguel
For: 5
Against: 0
Abstained: 0

Motion carried unanimously

C.M. made a motion to **close** the public hearing and **approve** Resolution No. MPO 2017-06 authorizing for the *Removal* of project CSJ 0086-14-077 intended to provide for construction of an interchange at the international airport, with an estimated construction cost of \$14,785,990. *Rationale:* Latest estimated letting date is fiscal year (FY) 2024, which is outside of the current TIP horizon.

Second: C.M. San Miguel
For: 5
Against: 0
Abstained: 0

Motion carried unanimously

- 2. *Removal of project CSJ 0086-14-078 intended to provide for construction of an interchange from 0.50 miles south of Jacaman Road to 0.50 miles north of Jacaman Road, with an estimated construction cost of \$19,691,424. Rationale: The latest estimated letting date is FY 2021, which is outside of the current TIP horizon.***

C.M. Balli made a motion to **open** a public hearing.

Second: C.M. San Miguel
For: 5
Against: 0
Abstained: 0

Motion carried unanimously

C.M. made a motion to **close** the public hearing and **approve** the *Removal* of project CSJ 0086-14-078 intended to provide for construction of an interchange from 0.50 miles south of Jacaman Road to 0.50 miles north of Jacaman Road, with an estimated construction cost of \$19,691,424. *Rationale:* The latest estimated letting date is FY 2021, which is outside of the current TIP horizon.

Second: C.M. San Miguel
For: 5
Against: 0
Abstained: 0

Motion carried unanimously

- 3. *Administrative Revision of grouped project CSJ 0922-33-149 intended to provide for the construction of the Chacon Creek Hike and Bike Trail, Phase 3, at Chacon Creek from Eastwood Park to US 59, with a construction***

cost estimate of \$1,400,000. Purpose: The letting date is moving from FY 2017 to FY 2019.

C.M. Balli made a motion to **open** a public hearing.

Second: Judge Tijerina
For: 5
Against: 0
Abstained: 0

Motion carried unanimously

C.M. made a motion to **close** the public hearing and **approve** the *Administrative Revision* of grouped project CSJ 0922-33-149 intended to provide for the construction of the Chacon Creek Hike and Bike Trail, Phase 3, at Chacon Creek from Eastwood Park to US 59, with a construction cost estimate of \$1,400,000. Purpose: The letting date is moving from FY 2017 to FY 2019.

G. Receive public testimony and approve Resolution No. MPO 2017-07, adopting the 2018 Unified Planning Work Program (UPWP).

C.M. Balli made a motion to **open** a public hearing.

Second: C.M. San Miguel
For: 5
Against: 0
Abstained: 0

Motion carried unanimously

C.M. made a motion to **close** the public hearing and **approve** Resolution No. MPO 2017-07, adopting the 2018 UPWP.

Second: C.M. San Miguel
For: 5
Against: 0
Abstained: 0

Motion carried unanimously

Judge Tijerina made a motion to **move up** the supplemental agenda item.

Second: C.M. San Miguel
For: 5
Against: 0
Abstained: 0

Motion carried unanimously

SUPPLEMENTAL AGENDA

Receive public testimony and initiate a ten-day public review and comment period for the proposed revision of all relevant sections of the 2015-2040 Metropolitan Transportation Plan (MTP) per the updated Loop 20/I69 Funding Plan submitted by Webb County and approved by the Policy Committee on June 19, 2017.

Judge Tijerina made motion to **open** a public hearing.

Second: C.M. San Miguel
For: 5
Against: 0
Abstained: 0

Motion carried unanimously

Judge Tijerina made a motion to initiate a ten-day review and comment period for the proposed revision of all relevant sections of the 2015-2040 Metropolitan Transportation Plan (MTP) per the updated Loop 20/I69 Funding Plan submitted by Webb County and approved by the Policy Committee on June 19, 2017.

Second: C.M. San Miguel
For: 5
Against: 0
Abstained: 0

Motion carried unanimously

H. Discussion with possible action on Hachar Road.

Mr. Bratton stated there was no update at the time.

VI. REPORT(S) AND PRESENTATIONS (No action required)

A. Presentation by Webb County on the development of a plan to visually demonstrate the physical layout of the Airport overpass designed so as not to encroach on the Armory or the Airport's property.

The item was not discussed due to lack of time.

B. TxDOT report on the status of ongoing construction projects.

The item was not discussed due to lack of time.

C. Status report on the Regional Mobility Authority (RMA).

1. Presentation on the proposed Vallecillo Road's funding sources.

Antonio Rodriguez, HNTB, Inc. gave a brief presentation on the item.

Due to lack of time, Judge Tijerina requested a copy of the presentation to be sent to the Policy Committee members.

VII. ADJOURNMENT

C.M. San Miguel made a motion to **adjourn** the meeting at 3:12 p.m.

Second: C.M. Balli
For: 5
Against: 0
Abstained: 0

Nathan R. Bratton,
MPO Director

Pete Saenz,
Mayor and LUTS Chairperson

**LAREDO URBAN TRANSPORTATION STUDY
ACTION ITEM**

<p>DATE: 08-21-17</p>	<p>SUBJECT: RESOLUTION Receive public testimony, initiate an additional 10 day public review and comment period and approve Resolution No. MPO 2017-08 adopting the following proposed amendment(s) of the 2015-2040 Metropolitan Transportation Plan (MTP), conditional to receipt of no significant comment:</p> <ol style="list-style-type: none"> 1. Amending Table 12-10, entitled Roadway and Bicycle/Pedestrian Project Summary, Figure 12-1, entitled Roadway and Bicycle/Pedestrian Projects, Table 12-11, entitled Roadway Projects, Figure 13-1, entitled Natural Resources and Federally Funded Projects, Figure 13-2, entitled Cultural Resources and Federally Funded Projects, Figure 13-3, entitled Low Income Areas and Federally Funded Projects, Table 13-1, entitled Federally Funded Projects Environmental Assessment Results, Table 13-3, entitled Federally Funded Projects and Environmental Justice Populations; and, Figure 13-4 entitled Colonias and Federally Funded Projects as necessary to incorporate the following revisions: <ol style="list-style-type: none"> a) Adding project CSJ 0086-14-076 for the construction of the Shiloh Road Overpass on US 59, with an estimated construction cost is \$18,539,712. Estimated letting date FY 2023. b) Adding project CSJ 0086-14-079 for the construction of the University Overpass on U.S. 59, with an estimated project construction cost of \$14,648,370 . Estimated letting date is FY 2022. c) Adding of project CSJ 0086-14-075 for the construction of the Del Mar Overpass on U.S. 59, with an estimated construction cost of \$20,496,476. Estimated letting date is FY 2021. d) Adding Vallecillo Road project, identified as project X-10, intended to develop schematic and environmental for a 5 lane roadway, from FM 1472 to IH35. Engineering by RMA’s general engineering consultant is \$300,000 and is in progress. e) Revising project CSJ 0086-14-077 for the construction of the Airport Overpass on US 59 at the International Airport , with an estimated project construction cost of \$14,785,990, by changing estimated letting date from fiscal year (FY) 2018 to FY 2024. f) Revising project CSJ 0086-14-078 for the construction of the Jacaman Road Overpass on US 59, with an estimated project construction cost of \$19,691,424, by changing letting date from fiscal year(FY) 2020 to FY 2021. g) Revising project #4/CSJ 0086-14-058/CSJ 0086-14-072 for the upgrade to interstate standards, including overpasses at Shiloh, University and Del Mar by removing identifier CSJ 0086-14-058, revising scope to remove the three overpasses and revising funding accordingly. The overpass projects at Shiloh, University and Del Mar will be identified independently as indicated above. Project CSJ 0086-14-058 for the preliminary schematic, environmental, ROW surveying/mapping and PS&E for Loop 20 from east of International Blvd. to US 59/Loop 20 is listed independently and has already let. <p style="text-align: right;">MTP 15-40/REV 08</p>
<p>COMMITTEE RECOMMENDATION: Approval</p>	<p>STAFF RECOMMENDATION: Approval.</p>

**LAREDO URBAN TRANSPORTATION STUDY
ACTION ITEM**

INITIATED BY: Webb County/RMA

STAFF SOURCE: Nathan Bratton, MPO Director

PREVIOUS ACTION:

On December 15, 2014 the Policy Committee adopted the 2015-2040 Metropolitan Transportation Plan (MTP). The Policy Committee approved revision #1 of the MTP on April 20, 2015. On October 19, 2015 the Policy Committee approved revision #2. On March 21, 2016, the Policy Committee approved revision #3 and also approved a ten day public review and comment period for revision #4. On December 21, 2015, the Policy Committee approve the allocation of 4.482 million dollars in Proposition 1, Category 2 (MPO) funds to the project identified as CSJ 2150-04-067 for the widening of pavement to provide additional travel lanes on FM 1472 (Mines Road) from Killam Industrial Boulevard to 0.3 miles north of Mueller Boulevard with an estimated letting date of August 2016. On June 20th, 2016, the Policy Committee approved the initiation of a 10 day public review and comment period for the proposed MTP revisions. On July 18th, 2016, the Policy Committee approved revision #5 of the MTP. Revision #6 was approved on October 17, 2016. On March 20th, 2017, the Policy Committee initiated a 10 day public review and comment period, which was subsequently adopted on April 17th, 2017. On July 17, 2017, the Policy Committee approved ten day public review and comment period for revision #8

BACKGROUND: The development of the MTP is federally required in to assure the continuation of federal transportation funds. The plan must address, at a minimum, a continuous twenty-year planning horizon.

See attachments for full details of all proposed revisions.

COMMITTEE RECOMMENDATION: Approval

STAFF RECOMMENDATION: Approval.

RESOLUTION NO. MPO 2017-08

BY THE LAREDO URBAN TRANSPORTATION STUDY
METROPOLITAN PLANNING ORGANIZATION POLICY COMMITTEE

ADOPTING THE 2015-2040 METROPOLITAN TRANSPORTATION PLAN (MTP)

WHEREAS, the Laredo Urban Transportation Study (LUTS), the designated Metropolitan Planning Organization (MPO) for the Laredo Urban Area, has reviewed the proposed revision(s) of the 2015-2040 Metropolitan Transportation Plan (MTP); and,

WHEREAS, the Laredo Urban Transportation Study finds that the proposed revision(s) of the 2015-2040 Metropolitan Transportation Plan (MTP) meets the high priority improvements necessary for the LUTS area;

NOW THEREFORE BE IT RESOLVED, that the Laredo Urban Transportation Study, as the designated Metropolitan Planning Organization for the Laredo Urban Area, adopted the proposed revisions of the 2015-2040 Metropolitan Transportation Plan (MTP), which are attached hereto and made a part hereof for all purpose:

We certify that the above resolution was adopted on August 21, 2017 at a public meeting of the Policy Committee of the Laredo Urban Transportation Study.

Honorable Pete Saenz
Mayor of Laredo and Chairperson of the
MPO Policy Committee

Nathan Bratton
MPO Director

Pedro R. Alvarez,
TxDOT, District Engineer

Table 12-10: Roadway and Bicycle/Pedestrian Projects Summary

Cat	CSJ No./ID	Roadway	Limits	Description	Letting Year	Project Cost		Projected Revenue	
						Total Project Cost (in 2014 dollars)	Year of Expenditure Cost	Federal Revenue	Other Revenue(RMA and Local Sources)
7, 11	0086-14-061	Loop 20	SH 359 to Spur 400	Widen existing bridge	2015	\$10,245,646	\$10,655,472	\$8,524,378	\$2,131,094
1, 2, 4	0086-14-062	Loop 20	1.09 S. of Spur 400 to Spur	New Nonfreeway	2015	\$16,936,138	\$17,613,584	\$1,506,867	\$16,106,717
8	0018-06-168	IH 35	At US 59 intersection	Improve traffic signal on	2015	\$96,146	\$99,992	\$81,702	\$18,290
8	0038-01-076	US 83	Palo Blanco to SH 359	Improve traffic signals -	2015	\$124,873	\$129,868	\$109,625	\$20,243
8	0038-01-077	US 83	Cielito Lindo to Palo Blanco	Improve traffic signals – interconnect signals	2015	\$171,131	\$177,976	\$131,375	\$46,601
8	0086-01-077	US 83	IH 35 to SH 359	Improve traffic signals -	2015	\$174,922	\$181,919	\$153,625	\$28,294
8	0542-01-079	US 59	IH 35 to Arkansas	Improve traffic signals -	2015	\$140,963	\$146,602	\$123,750	\$22,852
8	2150-04-057	FM 1472	At Loop 20	Improve traffic signal, interconnect signals, and	2015	\$90,700	\$94,328	\$77,074	\$17,254
8	2150-04-060	FM 1472	Killam Industrial Blvd	Install raised median	2015	\$149,669	\$155,656	\$128,438	\$27,218
9	9	Alexander Hike and Bike Trail	Zacate Dam to Del Mar Blvd	Construct hike and bike trail	2015	\$986,078	\$1,025,521	\$1,025,521	\$0
10	0086-14-051	Loop 20	0.50 mi west of Milo interchange to 3000 feet east	Schematic, environmental, ROW-survey/mappin	2015	\$4,256,385	\$4,426,640	\$4,000,845	\$425,795
10	0922-33-076	At the intersection of FM 1472 and Flecha Ln/Las Cruces Dr		Re-align intersection	2015	\$3,377,269	\$3,512,360	\$1,440,411	\$2,071,949
11	0922-00-060	VA	Districtwide	Upgrade bridge rail and MBGF	2015	\$3,059,036	\$3,181,397	\$2,500,000	\$681,397
12	0038-01-081	US 83	Cielito-Lindo Blvd (NB) to Espejo Molina Rd (NB)	Resurface of existing highway	2015	\$253,823	\$263,976	\$6,593,622	\$0
1,2M, 11	0086-14-066	Loop 20	0.45 m. east of Internation Blvd.to 0.25 m. west of Mpherson	Construction of interchange	2016	\$21,059,119	\$22,777,543	\$583,634	\$22,193,909
9	E-01	Manadas Creek Hike and Bike Trail, Phase III	United High School to Loop 20	Construct hike and bike trail	2016	\$886,846	\$959,213	\$959,213	\$0
10	0922-33-093	Calton Rd	Santa Maria Ave East of International Blvd to US 59/Loop 20 Interchange	Construct overpass	2016	\$23,309,669	\$25,211,738	\$12,926,124	\$12,285,614
10	0086-14-058	Loop 20		Schematic, environmental, ROW-survey/mappin g & PSE	2016	\$3,880,224	\$4,196,850	\$3,500,000	\$696,850

Cat	CSJ No./ID	Roadway	Limits	Description	Letting Year	Project Cost		Projected Revenue	
						Total Project Cost (in 2014 dollars)	Year of Expenditure Cost	Federal Revenue	Other Revenue(RMA and Local Sources)
11	0922-00-056	VA	Districtwide	Upgrade bridge rail and MBGF	2016	\$3,089,177	\$3,341,254	\$2,500,000	\$841,254
Local	0922-33-165	Hachar Parkway	FM 1472 to 0.1 m. E. of Beltway Parkway	Schematic, environmental for 5.07 miles of 5 lane rural roadway	2016	\$1,016,063	\$1,016,063	\$0	\$1,016,562
10 (CBI)	0922-33-166	Hachar Parkway	0.1 m. E. of Beltway Parkway to IH 35	Schematic, environmental, and preliminary engineering for a 5 lane rural roadway.	2016	\$300,000	\$300,000	\$300,000	\$60,000
Prop 1 (Cat 2) and 7	2150-04-067	FM 1472 (Mines Rd.)	Killam Industrial Blvd to 0.3 miles north of Mueller Blvd.	Construct one additional northbound travel lane, and the design and partial reconstruction of the existing outside lane.	2016	\$5,782,000	\$5,782,000	\$1,300,000	\$0
2, 7, 12	1/0086-14-065	Loop 20	At IH 35	Construct overpass and approach roadways	2017	\$22,727,143	\$25,564,945	\$25,564,945	\$0
8	0922-33-152	McPherson Rd	At Calton Rd	Install raised median	2017	\$231,362	\$260,251	\$203,829	\$56,422
8	0922-33-153	McPherson Rd	At Del Mar Blvd	Install raised median and add right turn lane	2017	\$573,721	\$645,358	\$505,445	\$139,913
8	0922-33-154	McPherson Rd	At International Blvd	Install raised median	2017	\$347,446	\$390,830	\$306,098	\$84,732
9	E-02	Manadas Creek Hike and Bike Trail, Phase IV	McPherson Rd to North Central Park	Construct hike and bike trail	2017	\$335,305	\$377,172	\$377,172	\$0
11	0922-33-149	Chacon Creek	Eastwoods Park to US 59	Construction of a pedestrian trail at Chacon Creek in Laredo (Phase 3)	2017	\$1,786,746	\$2,009,846	\$1,410,000	\$599,846
9, local	0922-33-170	Zacated Creek Hike and Bike Trail	Zacate Creek	Design and construction of hike and bike trail.	2017	1,250,000*	\$1,416,278	\$1,000,000	\$250,000
7	0922-33-175	Hachar Parkway	FM 1472 to IH 35	PS&E and Row mapping for 5 lane rural road	2017	\$1,452,866	\$1,634,277	\$1,307,421	\$326,855

Cat	CSJ No./ID	Roadway	Limits	Description	Letting Year	Project Cost		Projected Revenue	
						Total Project Cost (in 2014 dollars)	Year of Expenditure Cost	Federal Revenue	Other Revenue(RMA and Local Sources)
10-CBI	0922-14-081	IH 35	IH 35 and Loop 20	ITS for interchange facility over IH35	2017	\$924,556	\$1,040,000	\$800,000	\$240,000
2, 7	3	Loop 20	At IH 35	Construct ramps from IH 35 southbound to Loop 20 eastbound, and from Loop 20 westbound to IH 35 southbound	2018	\$44,200,000	\$51,707,748	\$9,276,602	\$42,431,146
2/Prop1	0086-14-077	US-59	International-Airport	Construct-interchange	2018	\$15,388,491	\$18,002,357	\$9,884,792	\$8,117,565
9	E-03	Manadas Creek Hike and Bike Trail, Phase V	IH 35 to McPherson Rd	Construct hike and bike trail	2018	\$654,910	\$766,152	\$766,152	\$0
7	0922-33-165	Hachar Parkway	FM 1472 to 0.1 m. E. of Beltway Parkway	Construction of 5.07 miles of 5 lane rural roadway	2018	\$33,060,222	\$41,831,728	\$21,437,521	\$20,394,207
9	E-04	Manadas Creek Hike and Bike Trail, Phase VI	Rio Grande River NW of water treatment plant	Construct hike and bike trail	2019	\$746,471	\$908,196	\$908,196	\$0
11	0922-00-951	VA	Districtwide	Upgrade bridge rail and MBGF	2019	\$3,089,178	\$3,758,457	\$2,500,000	\$1,258,457
4	0018-06-183	IH 35	.5 miles S. of US59-SL20 to .5 miles east of IH35/US59-SL20	Construct direct connector interchange (DC#5)	2019	\$34,438,973	\$41,900,277	\$27,000,000	\$14,900,277
9	0922-33-900	MSC	Anna Park to LCC campus	River Vega Hike and Bike Trail	2019	\$797,766	\$970,604	\$652,638	\$317,966
7, 10	4/0086-14-058/0086-14-072	Loop 20	International Blvd to US 59	Upgrade to interstate standards, including overpasses at Shiloh Dr, Del Mar Blvd, University Blvd	2020	\$355,517,697	\$449,843,303	\$90,970,586	\$358,872,717
7, 10	4/0086-14-072	Loop 20	International Blvd to US 59	Upgrade to interstate standards	2020	\$101,058,139	\$175,000,000	\$6,897,669	\$168,102,331
11	0922-00-953	VA	Districtwide	Upgrade bridge rail and MBGF	2020	\$3,089,177	\$3,908,795	\$2,500,000	\$1,408,795
2, 12	0086-14-078	US-59	.5 miles N of Jacaman to .5 miles S of Jacaman	Construct interchange	2020	\$20,493,812	\$25,931,210	\$15,753,139	\$10,178,071

Cat	CSJ No./ID	Roadway	Limits	Description	Letting Year	Project Cost		Projected Revenue	
						Total Project Cost (in 2014 dollars)	Year of Expenditure Cost	Federal Revenue	Other Revenue(RMA and Local Sources)
2,12	0086-14-078	US 59	.5 miles N of Jacaman to .5 miles S of Jacaman	Construct interchange	2020	\$23,539,285	\$30,976,093	\$2,153,139	\$28,822,954
2	0086-14-075		0.5 mi. S. of Del Mar to 0.5 mi. N. of Del Mar	Construct grade separation	2021	\$21,336,934	\$28,077,950	\$16,397,181	\$11,680,769
RMA (local)	X-10	Vallecillo Rd.	FM 1472 to IH 35	Schematic and environmental for construction of 5 lane roadway	2021	\$266,699	\$300,000	\$0	\$300,000
11	0922-00-955	VA	Districtwide	Upgrade bridge rail and MBGF	2021	\$3,089,178	\$4,065,147	\$2,500,000	\$1,565,147
2,4,12	0086-06-136	IH 35	Shiloh Dr. to .25 m N. of US 59/IH 69W	Widen mainlanes and construct overpass	2021	\$67,048,549	\$88,231,316	\$43,200,000	\$45,031,316
4	0018-05-089	IH 35	0.5 miles S. of Uniroyal Interchange to 1.0 N. of Uniroyal interchange	Replacement of existing bridge	2021	\$79,348,894	\$104,417,731	\$58,500,000	\$45,917,731
2	0086-14-079	US 59	0.5 mi. S. of University to 0.5 mi. N of University	construct grade separation	2022	\$14,685,323	\$20,097,878	\$11,718,696	\$8,379,182
11	0922-00-960	VA	Districtwide	Upgrade bridge rail and MBGF	2022	\$3,089,178	\$4,227,753	\$2,500,000	\$1,727,753
2	0086-14-076	US 59	0.5 mi. S. of Shiloh Rd to 0.5 mi. N. of Shiloh Rd.	Construct grade sepeparation	2023	\$24,000,574	\$34,160,300	\$14,831,770	\$19,328,530
11	0922-00-970	VA	Districtwide	Upgrade bridge rail and MBGF	2023	\$3,089,178	\$4,396,863	\$2,500,000	\$1,896,863
7	0922-33-166	Hachar Parkway	0.1 m. E. of Beltway Parkway to IH 35	Construction of 5 lane rural road	2023	\$24,190,742	\$34,430,969	\$17,152,535	\$17,278,434
2/Prop1	0086-14-077	US 59	International Airport	Construct interchange	2024	\$14,947,015	\$22,125,233	\$12,306,676	\$9,818,557
7	X-06	IH 35	At Loop 20	Construct ramp from Loop 20 Westbound to IH 35 Northbound	2037	\$35,520,000	\$87,546,696	\$7,454,863	\$80,091,833
7	X-09	IH 35	At Loop 20	Construct ramp from Loop 20 Eastbound to IH 35 Southbound	2039	\$35,520,000	\$94,690,506	\$7,454,863	\$87,235,643
Total						\$1,089,971,407	\$1,510,862,171	\$467,158,132	\$1,045,445,905

0086-14-075

DEL MAR BLVD OVERPASS

Description: Construction of overpass at Loop 20 and Del Mar Blvd.

Letting Year: 2021

Total Project Cost (2014 Dollars): \$21,336,934

YOE Cost: \$28,077,950

Programmed Amount:

Category 2: \$20,496,476

Other Amount: \$7,581,474

Funding: Federally funded

Environmental Impacts and Environmental Justice:

The project is not close to 100-year flood plains, r low income areas or other cultural resources.



0086-14-076

SHILOH RD OVERPASS

Description: Construction of overpass at Shiloh Road and Loop 20.

Letting Year: 2023

Total Project Cost (2014 Dollars): \$24,000,574

YOE Cost: \$34,160,300

Programmed Amount:

Category 2: \$18,539,712

Other Amount: \$15,620,588

Funding: Federally funded

Environmental Impacts and Environmental Justice:

The project is not close to 100-year flood plains, low income areas or other cultural resources.



0086-14-079

UNIVERSITY BLVD OVERPASS

Description: Construction of an overpass at University Blvd. and Loop 20.

Letting Year: 2022

Total Project Cost (2014 Dollars): \$14,685,323

YOE Cost: \$20,097,878

Programmed Amount:

Category 2: 14,648,370

Other Amount: \$5,449,508

Funding: Federally funded

Environmental Impacts and Environmental Justice:

The project is not close to 100-year flood plains, r low income areas or cultural resources.



Description: Development of schematic and environmental documents for the construction of 5 lane roadway from FM 1472 to IH35

Letting Year: 2021

Total Project Cost (2014 Dollars): \$266,699

YOE Cost: \$300,000

Programmed Amount: 0.00

Other Amount (RMA): \$300,000

Funding: Local/RMA

Environmental Impacts and Environmental Justice:



Description: Construction of interchange at International Airport.

Letting Year: 2018

Total Project Cost (2014 Dollars):

\$15,388,491

YOE Cost: \$18,002,357

Programmed Amount:

Category 2: \$2,430,000

Category 2, Prop 1: 12,355,990

Other Amount: \$3,216,367

Funding: Federally funded

Environmental Impacts and

Environmental Justice:

The project is close to 100-year flood plains, but it is not near low income areas or cultural resources.



Description: Construction of interchange at International Airport.

Letting Year: 2024

Total Project Cost (2014 Dollars):

\$14,947,015

YOE Cost: \$22,125,233

Programmed Amount:

Category 2: \$15,383,345

Other Amount: \$6,741,888

Funding: Federally funded

Environmental Impacts and

Environmental Justice:

The project is close to 100-year flood plains, but it is not near low income areas or cultural resources.



0086-14-078 US 59 – Construction of interchange at Jacaman Rd

Description: Construction of interchange at Jacaman Road.

Letting Year: 2020

Total Project Cost (2014 Dollars): \$20,493,812

YOE Cost: \$25,931,210

Programmed Amount:

Category 2: \$2,691,424

Category 12: \$17,000,000

Other Amount: \$6,239,786

Funding: Federally funded

Environmental Impacts and Environmental Justice:

The project is close to 100-year flood plains, but it is not near low income areas or cultural resources.



0086-14-078 US 59 – Construction of interchange at Jacaman Rd

Description: Construction of interchange at Jacaman Road.

Letting Year: 2021

Total Project Cost (2014 Dollars): \$23,539,285

YOE Cost: \$30,976,093

Programmed Amount:

Category 2: \$2,691,424

Category 12: \$17,000,000

Other Amount: \$11,284,669

Funding: Federally funded

Environmental Impacts and Environmental Justice:

The project is close to 100-year flood plains, but it is not near low income areas or cultural resources.



Loop 20 from International Blvd to US 59: Upgrade to interstate standards, including overpasses at Shiloh Dr, Del Mar Blvd, University Blvd, Jacaman Rd, and Airport

Description: In 2006, the TxDOT – Laredo District, together with Webb County, the City of Laredo, and the Laredo MPO, started early planning and conceptual engineering studies to upgrade Loop 20. Around 2011, petitioners began comprehensive studies to develop plans to upgrade Loop 20 to interstate standards. The first phase of the upgrade plan included three interchanges, including at IH 35 interchange (a.k.a. the Milo Interchange), at McPherson Road and at International Boulevard. The segment of Loop 20 is proposed to be co-designated as US 59 as well as Interstate 69 in the future.

The project will upgrade the existing roadway to meet Interstate standards, such as controlled access and sufficient median width. Several overpasses are proposed at the intersections of Shiloh Drive, Del Mar Boulevard, University Boulevard, Jacaman Road, and Airport. Loop 20 is one of the major truck routes in the Laredo MPO region. The project will provide more mobility to mitigate the high volume of traffic, especially commercial traffic.

The project is same as Project 0086 14 950 in Category 10.

Letting Year: 2020

Total Project Cost (2014 Dollars):

\$391,400,000

YOE Cost: \$495,245,864

Funding: Federally funded

Programmed Amount:

Category 7: \$73,240,848

Category 10: \$43,367,669

Other Amount: \$378,637,347

Environmental Impacts and Environmental Justice:

The project passes through 100-year flood plains, and it is close to Lake Casa Blanca, and detention ponds. It is also near Laredo International Airport, parks/recreational facilities, and schools, but it is not near low income areas.



4/ CSJ 0086-14-072 *Loop 20 from International Blvd to US 59: Upgrade to interstate standards*

Description: In 2006, the TxDOT – Laredo District, together with Webb County, the City of Laredo, and the Laredo MPO, started early planning and conceptual engineering studies to upgrade Loop 20. Around 2011, petitioners began comprehensive studies to develop plan to upgrade Loop 20 to interstate standards. The first phase of the upgrade plan included three interchanges, including at IH 35 interchange (a.k.a. the Milo Interchange), at McPherson Road and at International Boulevard. The segment of Loop 20 is proposed to be co-designated as US 59 as well as Interstate 69 in the future.

The project will upgrade the existing roadway to meet Interstate standards, such as controlled access and sufficient median width. Several overpasses are proposed at the intersections of Shiloh Drive, Del Mar Boulevard, University Boulevard, Jacaman Road, and Airport, which are identified separately in the plan. Loop 20 is one of the major truck routes in the Laredo MPO region. The project will provide more mobility to mitigate the high volume of traffic, especially commercial traffic.

Letting Year: 2020

Total Project Cost (2014 Dollars): \$101,058,139

YOE Cost: \$175,000,000

Funding: Federally funded

Programmed Amount:

Category 10 (CBI): \$6,897,669

Other Amount: \$168,102,331

Environmental Impacts and Environmental Justice:

The project passes through 100-year flood plains, and it is close to Lake Casa Blanca, and detention ponds. It is also near Laredo International Airport, parks/recreational facilities, and schools, but it is not near low income areas.



Figure 12-1: Roadway and Bicycle and Pedestrian Projects

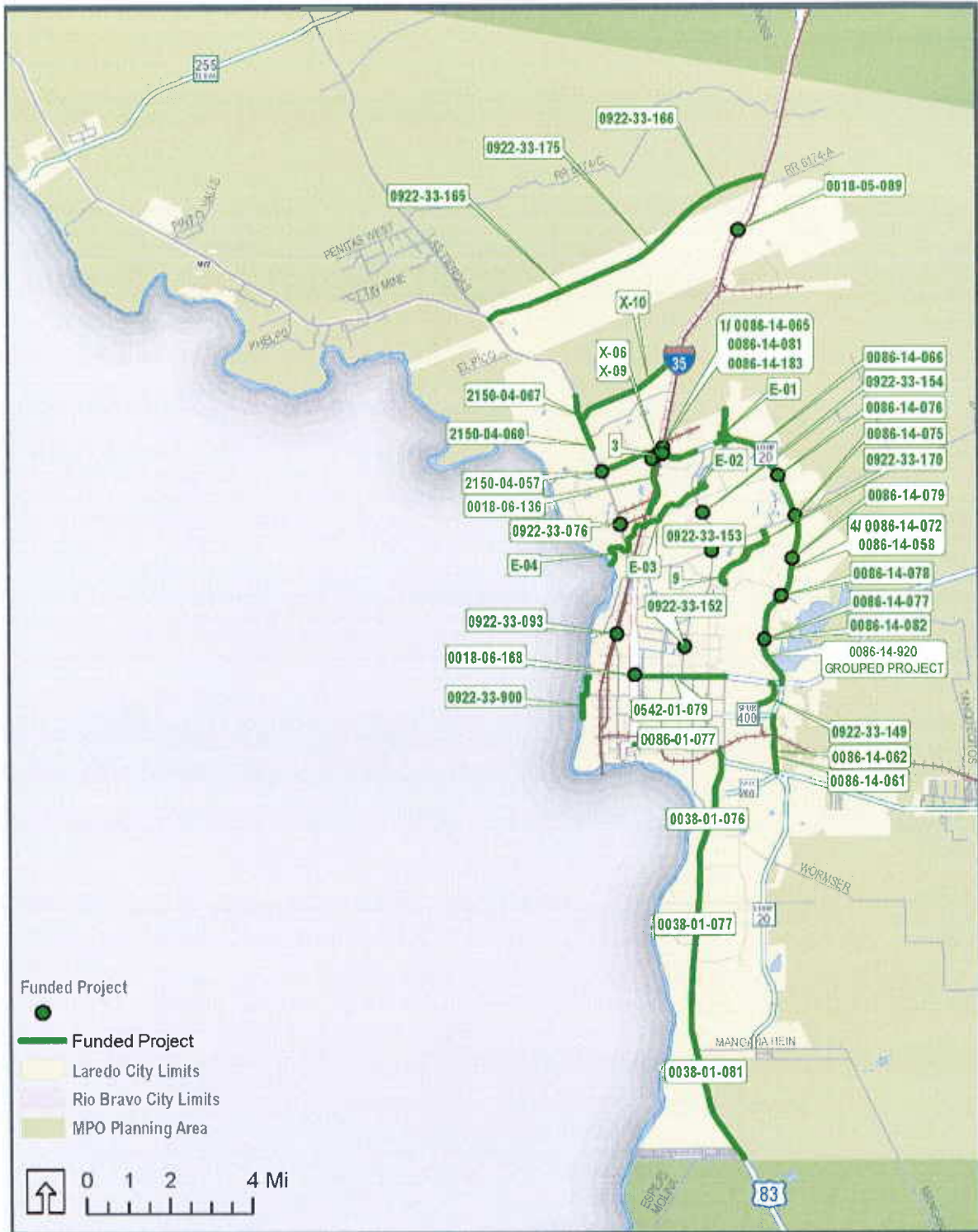


Figure 13-1: Natural Resources and Federally Funded Projects

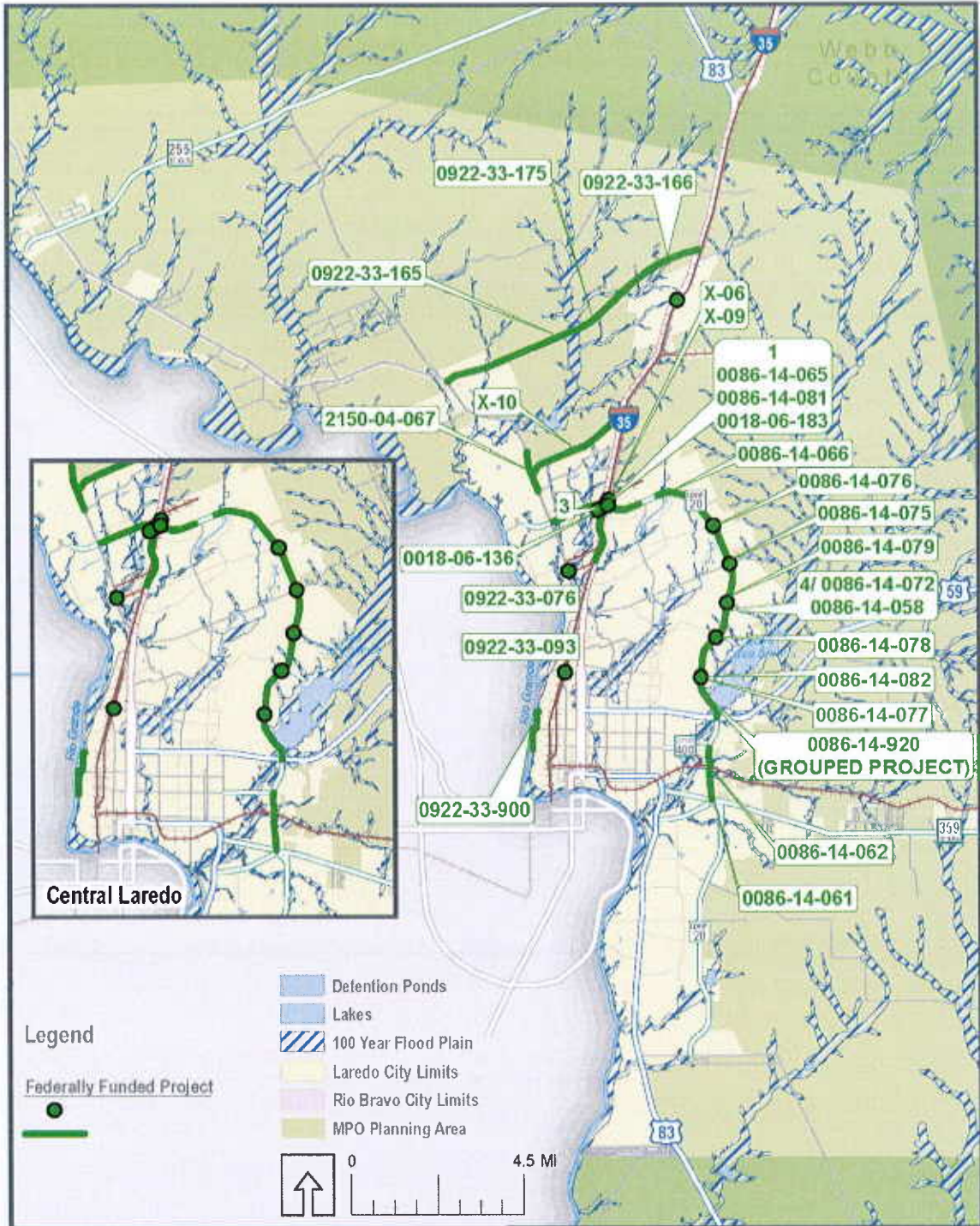


Figure 13-2: Cultural Resources and Federally Funded Projects

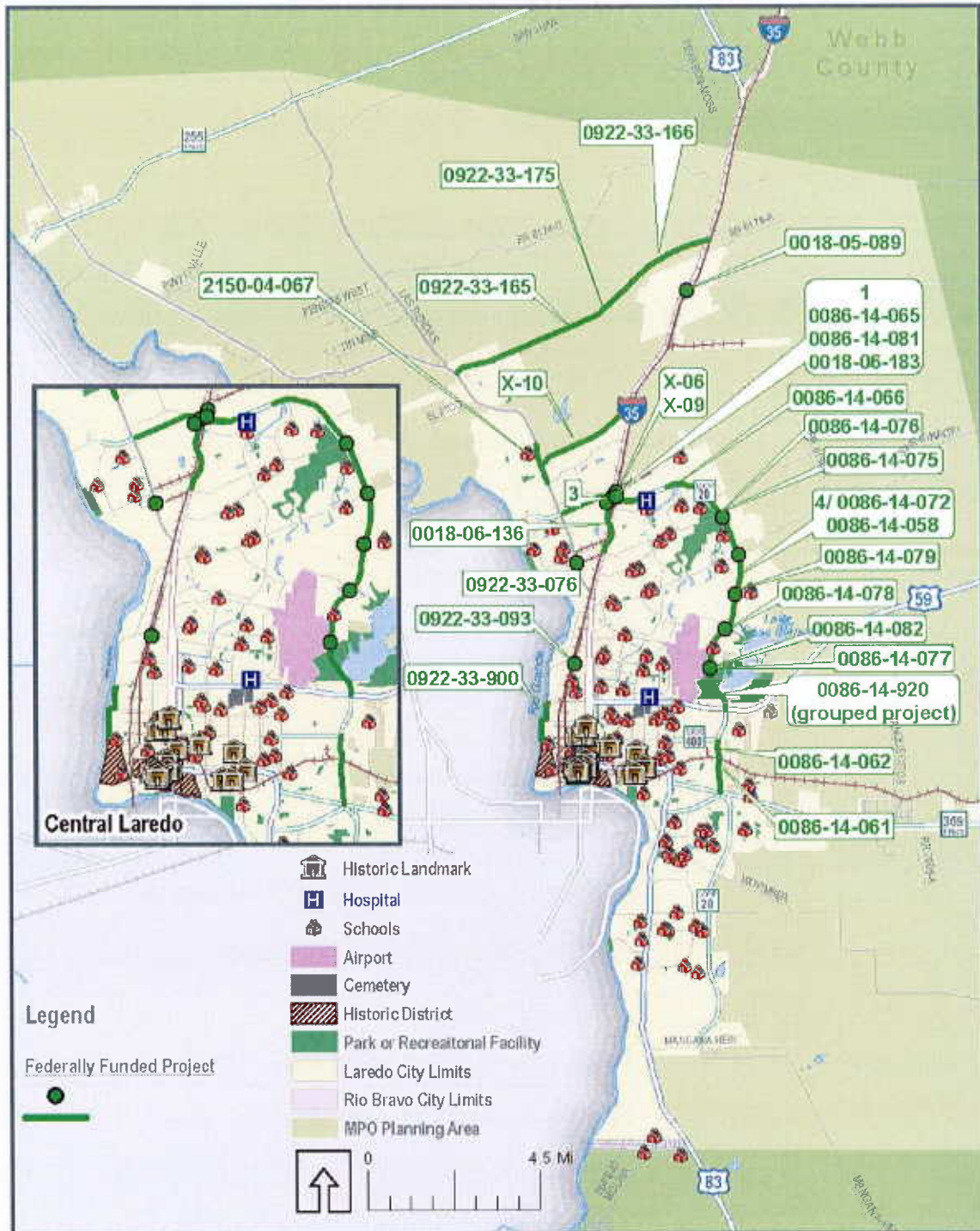


Table 13-1: Federally Funded Projects Environmental Assessment Results

ID	Roadway	Buffer Distance (Ft)	100-YR Flood Plain	Water Bodies	Airport	Cemetery	Historic Site	Medical Facility	Park and Rec. Facility	School
0086-14-061	Loop 20	400	<input checked="" type="checkbox"/>							
1, 0086-14-065	Loop 20	500	<input checked="" type="checkbox"/>							
0086-14-066	Loop 20	500	<input checked="" type="checkbox"/>	<input checked="" type="checkbox"/>						
3	Loop 20	500	<input checked="" type="checkbox"/>							
4, 0086-14-072, 0086-14-058	Loop 20	400	<input checked="" type="checkbox"/>	<input checked="" type="checkbox"/>	<input checked="" type="checkbox"/>				<input checked="" type="checkbox"/>	<input checked="" type="checkbox"/>
X-06	IH 35 at Loop 20	500	<input checked="" type="checkbox"/>							
X-09	IH 35 at Loop 20	500	<input checked="" type="checkbox"/>							
0922-33-076	City Street	500	<input checked="" type="checkbox"/>							
0922-33-093	City Street	500								
0086-14-062	Loop 20	400	<input checked="" type="checkbox"/>							
2150-04-067	FM 1472	400								
0922-33-165	Hachar Parkway	400	<input checked="" type="checkbox"/>							
0922-33-166	Hachar Parkway	400	<input checked="" type="checkbox"/>							
0922-33-175	Hachar Parkway	400	<input checked="" type="checkbox"/>							
0086-14-077	Loop 20	500			<input checked="" type="checkbox"/>					
0086-14-078	Loop 20	500								
0086-14-082	Loop 20	400	<input checked="" type="checkbox"/>		<input checked="" type="checkbox"/>					
0086-14-920 (Grouped Project)	Loop 20	400	<input checked="" type="checkbox"/>	<input checked="" type="checkbox"/>	<input checked="" type="checkbox"/>					
0018-05-089	IH 35	400								
0018-06-136	IH 35	400	<input checked="" type="checkbox"/>							
0018-06-183	IH 35 at Loop 20	400	<input checked="" type="checkbox"/>							
0922-33-900										
0086-14-075	Loop 20	500								
0086-14-076	Loop 20	500								
0086-14-079	Loop 20	500								

Environmental Mitigation Activities

It is stated in the laws governing the federal transportation planning process that “long-range transportation plans should include a discussion of types of potential environmental mitigation activities and potential areas to carry out these activities, including activities that may have the greatest potential to restore and maintain the environmental functions affected by the plan”. In addition, MAP-21 requires that potential environmental mitigation activities be developed in consultation with federal, state, and tribal wildlife, land management, and regulatory (resource) agencies. The Laredo MPO is committed to minimizing and mitigating the negative effects of transportation projects on the natural and built environments. In doing so, the MPO recognizes that not every project will require the same type or level of mitigation. Some projects, such as new roadways and new interchanges, involve major construction with considerable earth disturbance. Others, like intersection improvements, street lighting, and resurfacing projects, involve minor construction and minimal, if any, earth disturbance. The mitigation efforts used for a project should depend upon how severe the impact on environmentally sensitive areas is expected to be. To the extent possible, transportation projects should minimize off-site disturbance in sensitive areas and develop strategies to preserve air and water quality, limit tree removal, minimize grading and other earth disturbance, provide erosion and sediment control, and limit noise and vibration. Where feasible, alternative designs or alignments are developed that would lessen the project’s impact on environmentally sensitive areas. 40 CFR 1508.20 suggests that typical steps for mitigation include the following:

- Avoiding the impact altogether by not taking a certain action or parts of an action.
- Minimizing impacts by limiting the degree or magnitude of the action and its implementation.
- Rectifying the impact by repairing, rehabilitating, or restoring the affected environment.
- Reducing or eliminating the impact over time by preservation and maintenance operations during the life of the action.
- Compensating for the impact by replacing or providing substitute resources or environments.

Effective mitigation starts at the beginning of the environmental process, not at the end. Mitigation must be included as an integral part of the alternatives development and analysis process. An ordered approach to mitigation, known as “sequencing,” involves understanding the affected environment and assessing



transportation effects throughout project development. A variety of possible mitigation activities and measures that can be considered when dealing with environmental impacts, most of which are considered by the MPO during the project development process. The environmental mitigation strategies and activities are intended to be regional in scope, and may not necessarily address potential project-level impacts. As the location and magnitude of the proposed projects are determined, appropriate project level mitigation measures can be developed. **Table 13-2** lists the mitigation measures by resource.

Table 13-2: Potential Environmental Mitigation Activities

Resource	Mitigation Measures
Agricultural areas	Mitigation sequencing requirements involving avoidance, minimization, compensation (could include preservation, creation, restoration, in-lieu fees, riparian buffers); design exceptions and variances; environmental compliance monitoring.
Ambient air quality	Transportation control measures, transportation emission reduction measures, adoption of local air quality mitigation fee program, development of energy efficient incentive programs; adoption of air quality enhancing design guidelines.
Cultural Resources	Avoidance, minimization; landscaping for historic properties; preservation in place of excavation for archeological sites; Memoranda of Agreement with the Department of Historic Resources; design exceptions and variances; environmental compliance monitoring.
Endangered and threatened species	Avoidance, minimization; time of year restrictions; construction sequencing; design exceptions and variances; species research; species fact sheets; Memoranda of Agreements for species management; environmental compliance monitoring.
Forested and other natural areas	Avoidance, minimization; Replacement property for open space easements to be of equal fair market value and of equivalent usefulness; design exceptions and variances; environmental compliance monitoring.
Neighborhoods, communities, homes and businesses	Impact avoidance or minimization; context sensitive solutions for communities (appropriate functional and/or aesthetic design features).
Parks and recreation areas	Avoidance, minimization, mitigation; design exceptions and variances; environmental compliance monitoring.
Wetlands or water resources	Avoidance, minimization; design exceptions and variances; environmental compliance monitoring.

Air Quality

Air quality continues to play a major role in metropolitan planning. The National Ambient Air Quality Standards (NAAQS) are federal standards that set allowable concentrations and exposure limits for certain pollutants. Primary standards are intended to protect



public health, while secondary standards protect public welfare. Air quality standards have been established for the following six criteria pollutants: ozone, carbon monoxide, particulate matter, nitrogen dioxide, lead, and sulfur dioxide. If monitored levels of any of these pollutants violate the NAAQS, then the Environmental Protection Agency (EPA), in cooperation with the State of Texas, will designate the contributing area as "nonattainment."

A significant portion of the federal air quality regulations applies only to areas that are in nonattainment under the air quality standards of the Clean Air Act. Since the Laredo MPO area is not currently designated as a nonattainment area, meaning it meets applicable air quality standards, these portions of the regulations do not apply and have not been directly incorporated into the Laredo MPO's transportation planning process. However, Laredo MPO recognizes the importance of air quality standards and is cognizant of the importance in maintaining the region's attainment status.

Climate Change

Climate change is expected to have an impact on transportation planning and priorities. Although there is currently no official mandate concerning how climate change should be addressed in the planning process, MPOs are encouraged to consider both greenhouse gases (GHG) and climate change as part of their ongoing long-range transportation process.

While the debate regarding climate change continues, it nevertheless is emerging as a main environmental concern linked to transportation. According to the US Environmental Protection Agency (EPA) Transportation is the second largest contributor by sector to the nation's carbon footprint, after only the Electricity sector. In 2012, it was estimated that approximately 28 percent of GHG emissions in the United States come from transportation. In addition, GHG emissions from transportation have increased by approximately 18% since 1990. FHWA suggests the following four primary strategies to reduce GHG emissions from transportation:



Improve system and operational efficiencies: Traffic flow improvements can be achieved through intelligent transportation systems, route optimization, congestion pricing, and improved intermodal links and system connectivity. Other system efficiencies could be achieved by switching to more energy-efficient modes. Operational efficiencies can be achieved through improving vehicle maintenance, which can improve fuel efficiency and prevent breakdowns that tie up traffic, and reducing idling of freight vehicles.

Reduce growth of vehicle miles traveled (VMT): Implementing land use strategies that concentrate development can lessen the need to drive. Providing HOV lanes, transit

options, pedestrian and bicycle facilities, and promoting travel demand management programs and telecommuting can also reduce the number of vehicle trips.

Transition to lower GHG fuels: By replacing gasoline and diesel with fuels such as biodiesel and natural gas, less GHGs are emitted over their lifecycle, from production and refining to distribution and final consumption. Alternative fuels, as defined by the Energy Policy Act of 1992 (EPAAct), include ethanol, natural gas, propane, hydrogen, biodiesel, electricity, methanol, and p-series fuels. Using these alternative fuels in vehicles can generally reduce harmful pollutants and exhaust emissions. In addition, most of these fuels can be locally produced and derived from renewable sources.

Improve vehicle technologies: Promoting the development and usage of more fuel efficient vehicles, such as plug-in electric hybrids, will reduce the GHG emissions. Programs like “Drive Clean Across Texas” can help raise awareness and change attitudes about air pollution. Providing tax credits through programs like “Cash for Clunkers” can also encourage the purchase of more fuel efficient vehicles.

Environmental Justice

The purpose of an environmental justice (EJ) review is to ascertain that federally-funded transportation projects do not adversely impact minority populations and low-income populations. FHWA states that “Disproportionately high and adverse effects, not size, are the bases for Environmental Justice. A very small minority or low-income population in the project, study, or planning area does not eliminate the possibility of a disproportionately high and adverse effect on these populations. What is needed is to show the comparative effects on these populations in relation to either non-minority or higher income populations, as appropriate.” The Environmental Justice review for this plan includes consideration of whether these two population groups bear disproportionate impacts resulting from governmental decisions. MPOs are responsible for assessing the benefits and burdens of transportation system investments for different socio-economic groups. This includes both performing data analysis and developing a process to engage minority, low-income, and disabled populations in public involvement activities.

The Environmental Justice analysis for the 2040 MTP focused on the potentially adverse impacts caused by regionally significant street and highway construction projects. The construction of new roadways along new rights-of-way received special attention due to their potential to split or isolate parts of the community. Widening of existing roadways was deemed not as critical, but was still scrutinized for potential impacts. Alternative mode investments in transit service and bicycle and pedestrian facilities were considered to provide positive impacts to the minority and low-income populations of the region. For those locations that do not currently have multimodal transportation facilities, alternative mode services and facilities would provide additional, lower-cost transportation options to increase the mobility of these populations and their access to the community.

As part of this transportation plan update, 2012 data by Census tract from the U.S. Census Bureau was used to identify the geographic distribution of low-income populations. Because the Laredo region is predominantly Hispanic, locally identified colonias were also used for the environmental justice assessment. Within Texas, colonias are defined as

economically distressed residential areas located in unincorporated land along the US-Mexico border, often lacking basic public infrastructure, including potable water, sewer systems, electricity, paved roads, and safe and sanitary housing. Residents of colonias are mostly low-income individuals seeking access to affordable living accommodations.

In order to determine which Census tracts are considered low income in the Laredo region, the U.S. Census data that shows the number of households in poverty and total households in Census tracts in 2012 were used. A Census tract is considered to be a low income area if its percentage of households in poverty is higher than regional average.

Table 13-3 identifies which projects are located in Environmental Justice areas, while **Figure 13-3** and **Figure 13-4** present the locations of Environmental Justice populations and the priority projects within this MTP.

Table 13-3: Federally Funded Projects and Environmental Justice Population

<i>ID</i>	<i>Roadway</i>	<i>Limits</i>	<i>Buffer Distance (Ft)</i>	<i>Low Income Census Tract</i>	<i>Colonia</i>
0086-14-061	Loop 20	Clark Blvd to SH 359	400	<input checked="" type="checkbox"/>	
0086-14-062	Loop 20	Clark Blvd to SH 359	400	<input checked="" type="checkbox"/>	
1, 0086-14-065, 0086-14-081	Loop 20	At IH 35	500		
0086-14-066	Loop 20	At International Blvd	500		
3	Loop 20	At IH 35	500		
4, 0086-14-950, 0086-14-058	Loop 20	International Blvd to US 59	400		
X-06	IH 35	At Loop 20	500		
X-09	IH 35	At Loop 20	500		
0922-33-076	City Street	At the intersection of FM 1472 and Flecha Ln/Las Cruces Dr	500	<input checked="" type="checkbox"/>	
0922-33-093	City Street	At the intersection of Calton Rd and Santa Maria Ave	500	<input checked="" type="checkbox"/>	
0086-14-062	Loop 20	1.06 mi south of Spur 400 to Spur 400	400	<input checked="" type="checkbox"/>	
2150-04-067	FM 1472	Killam Industrial Blvd to .3 Mi North of Muller Memorial Blvd	400		
0922-33-175	Hachar Parkway	FM 1472 to IH35 West Frontage Road	400		
0922-33-165	Hachar Parkway	FM 1472 to .1 Mi East of Beltway Parkway	400		
0922-33-166	Hachar Parkway	.1 Mi East of Beltway Parkway to IH35 Frontage Rd	400		
0086-14-077	Loop 20	At Laredo International Airport	500		
0086-14-078	Loop 20	At Jacaman Rd	500		
Pending	Loop 20	Jacaman Rd to US 59 (Saunders St)	400		

Table 13-4: Federally Funded Projects and Environmental Justice Population (Continued)

<i>ID</i>	<i>Roadway</i>	<i>Limits</i>	<i>Buffer Distance (Ft)</i>	<i>Low Income Census Tract</i>	<i>Colonia</i>
Pending	Loop 20	Proposed Airport Overpass to US 59 (Saunders St)	400		
0018-05-089	IH 35	Upgrade of Overpass over Uniroyal	400		
0018-06-136	IH 35	Shiloh Dr to .25 Mi N of US 59/ I69W	400		
0018-06-183	IH 35 to Loop 20	.5 Mi E of IH 35 to .5 Mi S of US 59-SL 20	400		
0086-14-075	Loop 20	At Del Mar Blvd	500		
0086-14-076	Loop 20	At Shiloh Rd	500		
0086-14-079	Loop 20	At University Blvd	500		

Figure 13-3: Low Income Areas and Federally Funded Projects

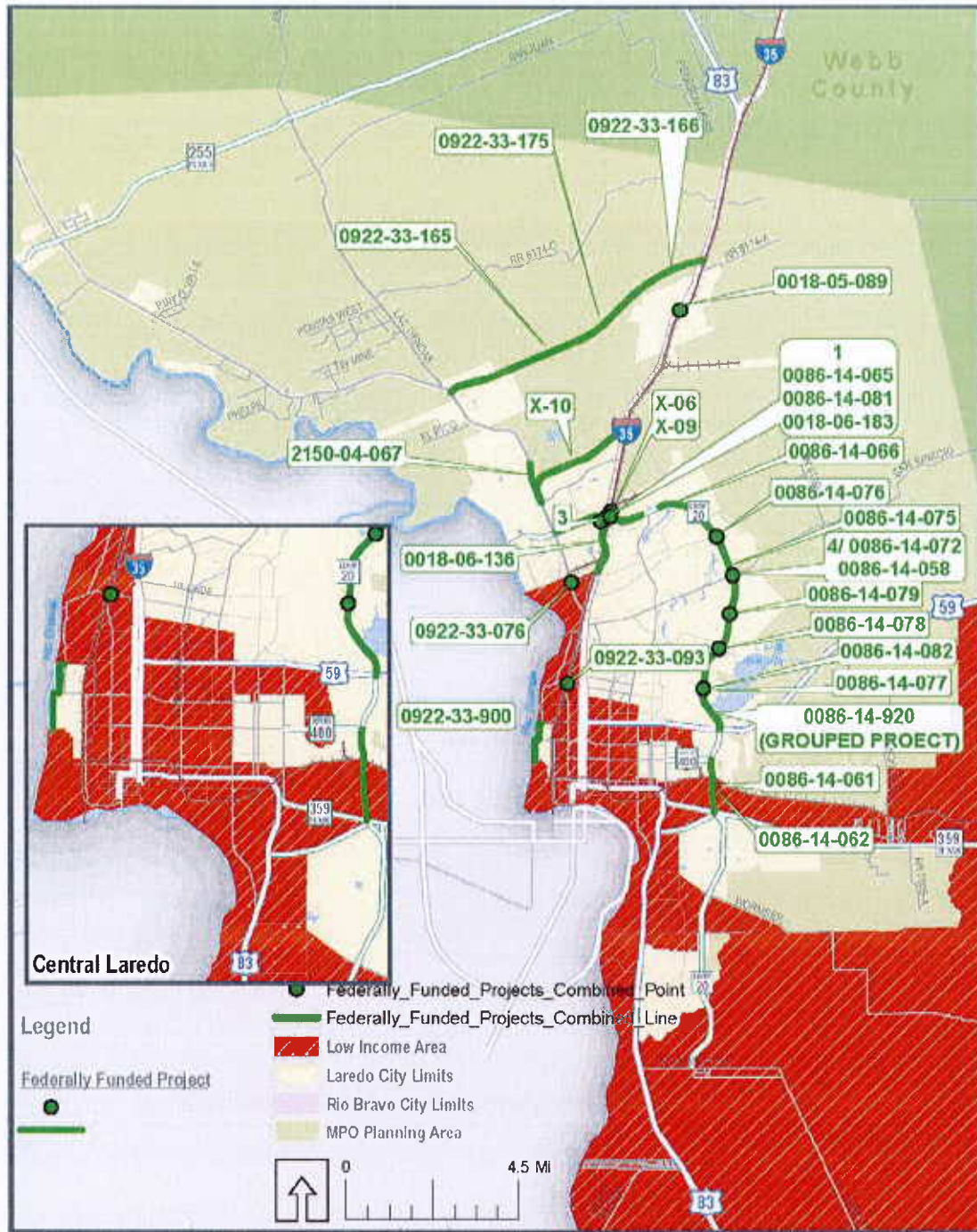
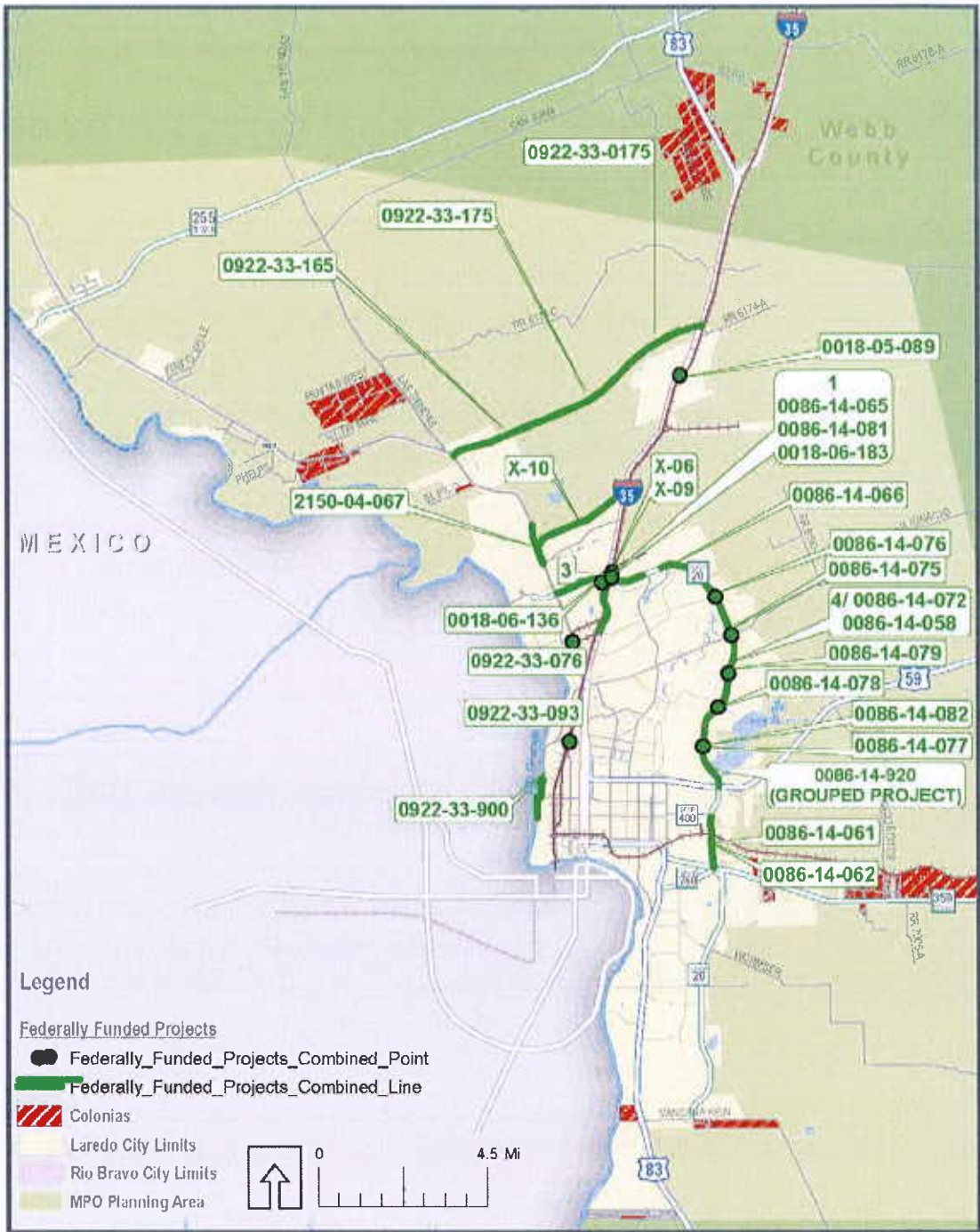


Figure 13-4: Colonias and Federally Funded Projects



Vanessa Guerra

From: Anthony Garza <Anthony.Garza@dannenbaum.com>
Sent: Thursday, July 06, 2017 11:26 AM
To: Vanessa Guerra
Cc: Nathaniel Olivarez; lperezgarcia@webbcountytx.gov; Roberto Rodriguez III; Analy Diaz; Nathan R. Bratton
Subject: RE: TAC agenda
Attachments: 2017-05-19 Loop 20 Funding Plan Update Final.pdf; 2017-07-06 - RUNS- PROJECT SUMMARY AG Edits.xlsx

Vanessa,

The attached plan included in the June LUTS-MPO Policy Packet was adopted during the June LUTS-MPO Policy Meeting and adoption necessitates an MTP revision. I have populated the runs as requested with the latest figures, please find it attached. I am sure that we will confer with TxDOT for minor edits as we move this process along.

Please let me know if I can be of any assistance.

Regards,

Anthony Garza
DANNENBAUM ENGINEERING
1109 W Nolana Loop, Suite 208
McAllen, Texas 78504
(956) 682-3677 Office
(956) 429-0525 Direct
(956) 639-2404 Mobile
(956) 686-1822 Fax

From: Vanessa Guerra [<mailto:vguerra@ci.laredo.tx.us>]
Sent: Thursday, July 6, 2017 10:06 AM
To: Anthony Garza <Anthony.Garza@dannenbaum.com>
Cc: Nathaniel Olivarez <Nathaniel.Olivarez@dannenbaum.com>; lperezgarcia@webbcountytx.gov; Roberto Rodriguez III <Roberto.Rodriguez@txdot.gov>; Analy Diaz <Analy.Diaz@dannenbaum.com>; Nathan R. Bratton <nbratton@ci.laredo.tx.us>
Subject: RE: TAC agenda

Good morning Mr. Garza,

It has yet to be determined whether MTP revision is necessary at this point.

The only information I have is the power point presentation given at the June 19th Policy meeting which only contains estimated construction costs and letting dates. In order to help Staff analyze whether an MTP revision is necessary per said funding plan, please fill out and return the attached spreadsheet for all 5 projects with the latest figures.

Should a revision be necessary, it would be presented to the committees as soon as possible, but would not be anticipated to be ready for the July meeting. Please do not hesitate to call me with any questions.

Thank you.

Vanessa Guerra

Planner III : City of Laredo Planning Department : Laredo Metropolitan Planning Organization : 1120 San Bernardo Ave. :

P.O. Box 579 : Laredo Texas 78042-579 : Main: 956-794-1613 : Dir.: 956-794-1604 : Fax: 956-794-1624 :

vguerra@ci.laredo.tx.us

From: Anthony Garza [<mailto:Anthony.Garza@dannenbaum.com>]

Sent: Wednesday, July 05, 2017 1:13 PM

To: Vanessa Guerra

Cc: Angelica Quijano; Nathaniel Olivarez; lperezgarcia@webbcountytx.gov; Roberto Rodriguez III; Analy Diaz

Subject: TAC agenda

Good Morning Vanessa,

Hope you had a happy and safe holiday.

On behalf of the county I wanted to make sure you had everything you need to include the detailed language for the TAC and Policy Agenda for the July meetings to update the MTP to include the latest Loop 20 funding plan.

Also wanted to touch base and request that you put me on the list for the TAC agendas please.

Thanks,

Anthony Garza

DANNENBAUM ENGINEERING

[1109 W Nolana Loop, Suite 208](#)

[McAllen, Texas 78504](#)

[\(956\) 682-3677](#) Office

[\(956\) 429-0525](#) Direct

[\(956\) 639-2404](#) Mobile

[\(956\) 686-1822](#) Fax

PROJECT SUMMARIES

		YEAR				
		Phase C	Federal	State	Local	TOTAL
0086-14-078	US 59			Let FY 2021		
From:	0.5 Mi S of Jacman Road					
To:	0.5 Mi N of Jacman Road					
Construction of a Grade Separation at US59/Loop 20 and Jacaman Intersection						
PE	964,880	FUNDS	2,153,139	538,285	0	2,691,424
ROW	8,807,488	CAT 2		17,000,000		17,000,000
Construction	19,691,424	CAT 12				19,691,424
Const Eng	923,528	TOTAL:				
Conting	588,774					
Total	30,976,093					

0086-14-075

PROJECT SUMMARIES

YEAR

TBD	US 59	Phase C	YEAR			TOTAL
			Federal	State	LC	
From:	0.5 Mi S of Del Mar Road					
To:	0.5 Mi N of Del Mar Road					
Construction of a Grade Separation at US59/Loop 20 and Del Mar Intersection						
PE	1,004,327	FUNDS	Federal	State	LC	TOTAL
ROW	5,003,017	CAT 2	16,397,181	4,099,295	0	20,496,476
Construction	20,496,476	TOTAL:				
Const Eng	961,285					20,496,476
Conting	612,845					
Total	28,077,950					

Laredo Urban Transportation Study Metropolitan Transportation Organization 10 Year UTP Funding Projections

Loop 20 Extension Funding Scenario
2018-2021 TIP, 2015-2040 MTP

Fiscal Year	2017	2018	2019	2020	2021	2022	2023	2024	2025	2026	Total
Proposition 1 MPO Only	\$ -	\$ -	\$ -	\$ -	\$ -	\$ -	\$ -	\$ -	\$ -	\$ -	\$ -
CR 12 Strategic Priority	\$ -	\$ -	\$ -	\$ -	\$ -	\$ -	\$ -	\$ -	\$ -	\$ -	\$ -
CR 2 Metro and Urban Funds*	\$ 2,430,000.00	\$ 14,090,946.46	\$ 7,920,278.32	\$ 10,262,488.39	\$ 17,000,000.00	\$ 11,240,775.04	\$ 11,814,571.93	\$ 11,852,197.95	\$ 11,861,604.46	\$ 11,852,197.95	\$ 17,000,000.00
Subtotals	\$ 2,430,000.00	\$ 14,090,946.46	\$ 7,920,278.32	\$ 10,262,488.39	\$ 19,174,929.50	\$ 11,240,775.04	\$ 11,814,571.93	\$ 11,852,197.95	\$ 11,861,604.46	\$ 11,852,197.95	\$ 95,500,000.00
Estimated Total Funding Available	\$ 2,430,000.00	\$ 14,090,946.46	\$ 7,920,278.32	\$ 10,262,488.39	\$ 19,174,929.50	\$ 11,240,775.04	\$ 11,814,571.93	\$ 11,852,197.95	\$ 11,861,604.46	\$ 11,852,197.95	\$ 112,500,000.00
TIP / STIP YEARS (2018-2021)											
TxDOT UTP YEARS (2017-2026)											
LUTS-MPO MTP YEARS (2015-2040)											
Project	2017	2018	2019	2020	2021	2022	2023	2024	2025	2026	
Jaramin Overpass Construction											
Delmar Overpass Construction											
Delmar, University, & Shiloh Overpass PS&E											
University Overpass Construction						\$ 14,648,370.20					
Shiloh Overpass Construction							\$ 18,539,712.27				
Airport Overpass Construction								\$ 15,383,344.60			
Total FY Funding Available prior to Programming	\$ 15,824,722.57	\$ 20,467,975.99	\$ 25,227,609.35	\$ 35,490,107.74	\$ 54,665,037.24	\$ 25,717,912.44	\$ 22,884,114.07	\$ 16,196,599.76	\$ 12,674,859.62	\$ 24,527,057.58	
Unallocated Funds	\$ 6,377,009.54	\$ 17,307,331.03	\$ 25,227,609.35	\$ 35,490,107.74	\$ 14,477,137.40	\$ 11,069,542.14	\$ 4,344,401.81	\$ 811,255.16	\$ 12,674,859.62	\$ 24,527,057.58	

*Based on data provided in the TxDOT 2017 UTP and STIP and includes reductions for programmed projects outside of the Loop 20 Extension. These amounts do not include funds that the TxDOT Laredo District may receive in addition to the disbursements to the LUTS MPO. ALSO includes the approx 6% reduction set forth in the DRAFT 2018 UTP Planning Targets.

Jacaman Overpass (Approx. from south of Sinatra to 0.5 miles north of Jacaman)

Approximate Schedule - Ready to Let

ACTIVITY	DURATION (MONTHS)	TARGET COMPLETION DATE	2017												2018												2019												2020												2021											
			J	F	M	A	M	J	J	A	S	O	N	D	J	F	M	A	M	J	J	A	S	O	N	D	J	F	M	A	M	J	J	A	S	O	N	D	M	A	R	J	F	M	A	M	J	J	A	S	O	N	D	J	F	M	A	M	J	J	A	S
Schematic development (pending drainage, access mgmt, LOS analysis)	on-going	Jul-17	[Green shading]																																																											
Environmental Process	on-going	Feb-18	[Blue shading]																																																											
ROW Surveys & Descriptions	5	Dec-17	[Yellow shading]																																																											
ROW Acquisition Estimate & Local Participation Agreement	1	Jan-18	[Yellow shading]																																																											
ROW Appraisals	4	Feb-18	[Yellow shading]																																																											
ROW Offers (Complete Acquisition) (see below)		Mar-20	[Yellow shading]																																																											
Utility Adjustments	12	Mar-21	[Yellow shading]																																																											
LETTING DATE		Aug-21	[Yellow shading]																																																											
MAJOR ROW ACQUISITION																																																														
ROW (Holiday Inn Express)	24*	Mar-20	Prelim Discussions																																																											
Other ROW (Killam Properties, Lakeside Properties, Loop Subdivision)	12-18*	Sep-19	Prelim Discussions																																																											

*Approximate duration of Major ROW Acquisition is according to preliminary discussions and coordination with respective Property owners
 -Environmental Clearance is dependent on a final approved schematic and completion of the section 6(f) coordination
 -ROW Offers cannot commence until 1) Schematic approval, 2) Local Participation Agreement & Contribution and 3) Environmental Clearance
 -Project Letting is 4 months after "Ready to Let" Date

"READY TO LET" Definition:	<ul style="list-style-type: none"> > ENV Cleared and ENV mitigation complete > ENV permits secured > ROW cleared (acquisition, abatement, demolition, etc) > Schematic approved
	<ul style="list-style-type: none"> > 100% PS&E > Project Agreements in place (Local funding received) > Railroad Coordination/Agreements in place > Utility Agreements in place/relocations in progress

SUBJECT TO REVISION

University, Del Mar or Shiloh Interchanges (Includes Overpass, approach frontage roads and ramps)

Approximate Schedule - Ready to Let

ACTIVITY	DURATION (MONTHS)	TARGET COMPLETION DATE	2017												2018												2019												2020												2021												
			J	F	M	A	M	J	J	A	S	O	N	D	J	F	M	A	M	J	J	A	S	O	N	D	S	E	P	T	J	F	M	A	M	J	J	A	S	O	N	D	J	F	M	A	M	J	J	A	S	O	N	D	J	F	M	A	M	J	J	A	S
Schematic development (pending drainage, access mgmt, LOS analysis)	on-going	Jul-17																																																													
Environmental Process	on-going	Feb-18																																																													
ROW Surveys & Descriptions	5	Dec-17																																																													
ROW Acquisition Estimate & Local Participation Agreement	1	Jan-18																																																													
ROW Appraisals	4	Feb-18																																																													
ROW Offers (Complete Acquisition) (see below)		Sep-19																																																													
Utility Adjustments	12	Sep-20																																																													
LETTING DATE		Feb-21																																																													
MAJOR ROW ACQUISITION																																																															
ROW Firestation (driveway) Exxon (corner clip) IBC (billboard sign) TAMU (driveways & signage)	12-18*	Sep-19																																																													
Other ROW Undeveloped Land parcels	12-18*	Sep-19																																																													

* Approximate duration of Major ROW Acquisition is according to preliminary discussions and coordination with respective Property owners
 - Environmental Clearance is dependent on a final approved schematic and completion of the section 6(f) coordination
 - ROW Offers cannot commence until 1) Schematic approval, 2) Local Participation Agreement & Contribution and 3) Environmental Clearance
 - Project Letting is 4 months after "Ready to Let" Date

- "READY TO LET" Definition:
- > ENV Cleared and ENV mitigation complete
 - > ENV permits secured
 - > ROW cleared (acquisition, abatement, demolition, etc)
 - > Schematic approved
- > 100% PS&E
 > Project Agreements in place (Local funding received)
 > Railroad Coordination/Agreements in place
 > Utility Agreements in place/relocations in progress

Project						
Jacaman Overpass Construction						
Scheduled letting: FY 2021						
LATEST ESTIMATE - 10/1/15 - DEC						
Preliminary Engineering						\$8,807,487.54
ROW						\$19,691,423.83
Construction Cost						\$886,114.07
Contingency	4.50%					\$1,279,942.55
Indirect	6.50%					\$1,220,868.28
PS&E	6.20%					\$1,083,028.31
Total Project Cost*	5.50%					\$32,968,864.58
YOE Cost						\$19,691,423.83
PROPOSED PROGRAMMING						
Funding by Category	Phase	Total	Federal	State	Local	
Cat 12 Strategic Priority	Construction	17,000,000.00	0.00	17,000,000.00	0.00	
Cat 2 Metro and Urban Funds*	Construction	2,691,423.83	0.00	2,691,423.83	0.00	
TOTAL PROGRAMMED FUNDS		19,691,423.83	0.00	19,691,423.83	0.00	

*no escalation was used on lettings within the 2018-2021 TIP years or ROW costs, outside of FY 2021 2% escalation per year was used

Project		Delmar Overpass Construction	
		Scheduled letting: FY 2021	
LATEST ESTIMATE - 10/1/15 - DEC			
Preliminary Engineering		\$5,003,016.81	
ROW		\$20,496,476.01	
Construction Cost		\$922,341.42	
Construction Engineering	4.50%	\$1,332,270.94	
Contingency	6.50%	\$1,270,781.51	
Indirect	6.20%		
PS&E			
Total Project Cost*		\$29,024,886.69	
VOE Cost		\$20,496,476.01	
PROPOSED PROGRAMMING			
Funding by Category	Phase	Total	
Cat 2 Metro and Urban Funds*	Construction	20,496,476.01	0.00
TOTAL PROGRAMMED FUNDS		20,496,476.01	0.00
			0.00
			0.00

* no escalation was used on lettings within the 2018-2021 TIP years or ROW costs, outside of FY 2021 2% escalation per year was used

Project		Delmar, University, & Shiloh Overpass PS&E			
		Scheduled letting: FY 2018			
		LATEST ESTIMATE - 6/24/2016 - DEC			
ROW					
Construction Cost			\$21,897,780.23		
Construction Engineering			\$52,677,416.00		
Contingency		4.50%	\$2,370,483.72		
Indirect		6.50%	\$3,424,032.04		
PS&E*		6.20%	\$3,265,999.79		
Total Project Cost		6.00%	\$3,160,644.96		
YOE Cost			\$83,635,711.79		
			\$3,160,644.96		
PROPOSED PROGRAMMING					
Funding by Category	Phase	Total	Federal	State	Local
CBI	Construction		3,160,644.96	2,528,515.97	632,128.99
TOTAL PROGRAMMED FUNDS			3,160,644.96	2,528,515.97	632,128.99
* based off of the latest construction cost estimate and current industry standard, requires negotiation and approval of fee by TxDOT.					

Project		University Overpass Construction Scheduled letting: FY 2022			
LATEST ESTIMATE - 10/1/15 - DEC					
Preliminary Engineering					
ROW			\$3,606,471.79		
Construction Cost			\$14,361,147.35		
Construction Engineering	4.50%		\$646,251.63		
Contingency	6.50%		\$933,474.58		
Indirect	6.20%		\$890,391.14		
PS&E					
Total Project Cost*			\$20,437,736.45		
YOE Cost			\$14,648,370.30		
PROPOSED PROGRAMMING					
Funding by Category	Phase	Total	Federal	State	Local
Cat 2 Metro and Urban Funds*	Construction	14,648,370.30	0.00	14,648,370.30	0.00
TOTAL PROGRAMMED FUNDS		14,648,370.30	0.00	14,648,370.30	0.00

* no escalation was used on lettings within the 2018-2021 TIP years or ROW costs, outside of FY 2021 2% escalation per year was used

Project		Shiloh Overpass Construction	
		Scheduled letting: FY 2023	
LATEST ESTIMATE - 10/1/15 - DEC			
Preliminary Engineering		\$13,288,291.63	
ROW		\$17,819,792.64	
Construction Cost		\$801,890.67	
Construction Engineering	4.50%	\$1,158,286.52	
Contingency	6.50%	\$1,104,827.14	
Indirect	6.20%		
PS&E			
Total Project Cost*		\$34,173,088.61	
YOE Cost		\$18,539,712.27	
PROPOSED PROGRAMMING			
Funding by Category	Phase	Total	Federal
Cat 2 Metro and Urban Funds*	Construction	18,539,712.27	0.00
TOTAL PROGRAMMED FUNDS		18,539,712.27	0.00
			State
			18,539,712.27
			Local
			0.00

*no escalation was used on lettings within the 2018-2021 TIP years or ROW costs, outside of FY 2021 2% escalation per year was used

Project						
Airport Overpass Construction						
Scheduled letting: FY 2024						
LATEST ESTIMATE - 6/24/2016 - DEC						
ROW						\$4,806,663.03
Construction Cost						\$14,785,990.58
Construction Engineering		4.50%				\$665,369.58
Contingency		6.50%				\$961,089.39
Indirect		6.20%				\$916,731.42
Total Project Cost*						\$22,135,843.99
YOE Cost						\$15,383,344.60
PROPOSED PROGRAMMING						
Funding by Category	Phase	Total	Federal	State	Local	
Cat 2 Metro and Urban Funds*	Construction	15,383,344.60	0.00	15,383,344.60	0.00	
TOTAL PROGRAMMED FUNDS		15,383,344.60	0.00	15,383,344.60	0.00	

* no escalation was used on lettings within the 2018-2021 TIP years or ROW costs, outside of FY 2021 2% escalation per year was used

2018 Unified Transportation Program **Laredo**

Webb County

CSJ 0018-03-049	District LAREDO	COUNTY WEBB	UTP AUTHORITY Let	TOLL No	IH 35	Ranking Tier 2
Limits From	1000 FT SOUTH OF MARTINENA					
Limits To	WEBB/LASALLE COUNTY LINE					
Project Description	CONSTRUCTION OF A NEW TWO LANE ROADWAY		Est Const Cost: \$841,499			
Programmed Construction Funding						
Category	Description	Authorized	Other	Total		
4	RURAL CONNECTIVITY	\$841,499	\$0	\$841,499	Previously Authorized	
Total		\$841,499	\$0	\$841,499		

CSJ 0018-05-183	District LAREDO	COUNTY WEBB	UTP AUTHORITY Let	TOLL No	IH 35	Ranking Tier 1
Limits From	0.5 MI SOUTH OF US59-SL20					
Limits To	0.50 MI EAST OF IH35 / US59-SL20					
Project Description	CONSTRUCTION OF DIRECT CONNECTOR INTERCHANGE (DC#5)		Est Const Cost: \$30,000,000			
Programmed Construction Funding						
Category	Description	Authorized	Other	Total		
4	RURAL CONNECTIVITY	\$30,000,000	\$0	\$30,000,000	Previously Authorized	
Total		\$30,000,000	\$0	\$30,000,000		

CSJ 0018-06-136	District LAREDO	COUNTY WEBB	UTP AUTHORITY Construct	TOLL No	IH 35	Ranking Tier 1
Limits From	SHILOH DRIVE					
Limits To	0.25 MILES N. OF US 59/ IH 69W					
Project Description	WIDEN OF MAINLANES AND RR GRADE SEPARATION		Est Const Cost: \$54,000,000			
Programmed Construction Funding						
Category	Description	Authorized	Other	Total		
12	STRATEGIC PRIORITY	\$18,000,000	\$0	\$18,000,000	Previously Authorized	
4	URBAN CONNECTIVITY	\$27,000,000	\$0	\$27,000,000		
2M	METRO CORRIDOR	\$9,000,000	\$0	\$9,000,000		
Total		\$54,000,000	\$0	\$54,000,000		

CSJ 0086-14-078	District LAREDO	COUNTY WEBB	UTP AUTHORITY Construct	TOLL No	US 59	Ranking Tier 2
Limits From	0.50 MI S OF JACAMAN RD					
Limits To	0.50 MI N OF JACAMAN RD					
Project Description	CONSTRUCTION OF INTERCHANGE		Est Const Cost: \$19,691,424			
Programmed Construction Funding						
Category	Description	Authorized	Other	Total		
12	STRATEGIC PRIORITY	\$17,000,000	\$0	\$17,000,000	Previously Authorized	
2M	METRO CORRIDOR	\$2,691,424	\$0	\$2,691,424		
Total		\$19,691,424	\$0	\$19,691,424		

CSJ 0018-05-089	District LAREDO	COUNTY WEBB	UTP AUTHORITY Develop	TOLL No	IH 35	Ranking Tier 1
Limits From	0.500 MI S OF UNIROYAL INTERCHANGE					
Limits To	1.000 MI N OF UNIROYAL INTERCHANGE					
Project Description	REPLACEMENT OF EXISTING BRIDGE		Est Const Cost: \$65,000,000			
Programmed Construction Funding						
Category	Description	Authorized	Other	Total		
4	RURAL CONNECTIVITY	\$65,000,000	\$0	\$65,000,000	Previously Authorized	
Total		\$65,000,000	\$0	\$65,000,000		

CSJ 0086-14-075	District LAREDO	COUNTY WEBB	UTP AUTHORITY Develop	TOLL No	US 59	Ranking Tier 2
Limits From	AT DEL MAR					
Limits To						
Project Description	CONSTRUCTION OF INTERCHANGE		Est Const Cost: \$24,100,000			
Programmed Construction Funding						
Category	Description	Authorized	Other	Total		
2M	METRO CORRIDOR	\$24,100,000	\$0	\$24,100,000	New Project	
Total		\$24,100,000	\$0	\$24,100,000		

2018 Unified Transportation Program

Laredo

CSJ 0086-14-076	District LAREDO	COUNTY WEBB	UTP AUTHORITY Develop	TOLL No	US 59	Ranking Tier 2
Limits From		AT SHILOH				
Limits To						
Project Description		CONSTRUCTION OF INTERCHANGE			Est Const Cost: \$21,500,000	
Programmed Construction Funding						
Category	Description	Authorized	Other	Total		
2M	METRO CORRIDOR	\$21,500,000	\$0	\$21,500,000		
	Total	\$21,500,000	\$0	\$21,500,000		

New Project

CSJ 0086-14-079	District LAREDO	COUNTY WEBB	UTP AUTHORITY Develop	TOLL No	US 59	Ranking Tier 2
Limits From		AT UNIVERSITY BLVD				
Limits To						
Project Description		CONSTRUCTION OF INTERCHANGE			Est Const Cost: \$16,850,000	
Programmed Construction Funding						
Category	Description	Authorized	Other	Total		
2M	METRO CORRIDOR	\$16,850,000	\$0	\$16,850,000		
	Total	\$16,850,000	\$0	\$16,850,000		

New Project

CSJ 0922-33-166	District LAREDO	COUNTY WEBB	UTP AUTHORITY Develop	TOLL No	CS	Ranking Tier 3
Limits From		0.1 MILE EAST OF BELTWAY PARKWAY				
Limits To		IH 35 WEST FRONTAGE ROAD				
Project Description		PRELIMINARY ENGINEERING, INCLUSIVE OF SCHEMATIC AND ENV			Est Const Cost: \$300,000	
Programmed Construction Funding						
Category	Description	Authorized	Other	Total		
10	COORD BORDER INFRASTRUCT	\$300,000	\$0	\$300,000		
	Total	\$300,000	\$0	\$300,000		

Previously Authorized

CSJ 0086-14-077	District LAREDO	COUNTY WEBB	UTP AUTHORITY Develop	TOLL No	US 59	Ranking Tier 2
Limits From		AT INTERNATIONAL AIRPORT				
Limits To						
Project Description		CONSTRUCTION OF INTERCHANGE			Est Const Cost: \$14,785,990	
Programmed Construction Funding						
Category	Description	Authorized	Other	Total		
2M	PROP 1 CONGESTION	\$2,430,000	\$0	\$2,430,000		
2M	METRO CORRIDOR	\$12,355,990	\$0	\$12,355,990		
	Total	\$14,785,990	\$0	\$14,785,990		

Previously Authorized

Comments: Project includes funding authorized in previous UTP fiscal years that will be carried forward.

2018 Unified Transportation Program **Laredo**

La Salle County

CSJ **0018-02-062** District **LAREDO** COUNTY **LA SALLE** UTP AUTHORITY **Let** TOLL **No** **IH 35** Ranking Tier **2**

Limits From **WEBB/LASALLE COUNTY LINE**
 Limits To **0.95 MI NORTH OF WEBB/LASALLE CL**
 Project Description **CONSTRUCTION OF A NEW TWO LANE ROADWAY** Est Const Cost: \$2,561,641

Programmed Construction Funding

Category	Description	Authorized	Other	Total
4	RURAL CONNECTIVITY	\$2,561,641	\$0	\$2,561,641
Total		\$2,561,641	\$0	\$2,561,641

Previously Authorized

Maverick County

CSJ **0300-01-098** District **LAREDO** COUNTY **MAVERICK** UTP AUTHORITY **Let** TOLL **No** **US 277** Ranking Tier **2**

Limits From **0.30 MI W OF US 57**
 Limits To **0.30 MI E OF US 57**
 Project Description **INTERSECTION IMPROVEMENTS** Est Const Cost: \$3,723,120

Programmed Construction Funding

Category	Description	Authorized	Other	Total
10	COORD BORDER INFRASTRUCT	\$3,301,956	\$0	\$3,301,956
10	COORD BORDER INFRASTRUCT	\$421,164	\$0	\$421,164
Total		\$3,723,120	\$0	\$3,723,120

Previously Authorized

Val Verde County

CSJ **0922-11-031** District **LAREDO** COUNTY **VAL VERDE** UTP AUTHORITY **Let** TOLL **No** **CS** Ranking Tier **3**

Limits From **QUALIA DRIVE**
 Limits To **SPUR 239 & ALDERETE LANE**
 Project Description **FOR THE CONSTRUCTION OF A NEW LOCATION 2 LANE ROADWAY** Est Const Cost: \$2,785,000

Programmed Construction Funding

Category	Description	Authorized	Other	Total
10	COORD BORDER INFRASTRUCT	\$2,750,000	\$0	\$2,750,000
3	LOCAL	\$0	\$35,000	\$35,000
Total		\$2,750,000	\$35,000	\$2,785,000

Previously Authorized

CSJ **0922-11-032** District **LAREDO** COUNTY **VAL VERDE** UTP AUTHORITY **Let** TOLL **No** **VA** Ranking Tier **3**

Limits From **109 LF SOUTH OF UP-RR TRACKS,**
 Limits To **ALDERETE LANE**
 Project Description **REHABILITATION OF EXISTING HIGHWAY** Est Const Cost: \$3,306,000

Programmed Construction Funding

Category	Description	Authorized	Other	Total
10	COORD BORDER INFRASTRUCT	\$3,306,000	\$0	\$3,306,000
3	LOCAL	\$0	\$30,000	\$30,000
Total		\$3,306,000	\$30,000	\$3,336,000

Previously Authorized

CSJ **0922-11-036** District **LAREDO** COUNTY **VAL VERDE** UTP AUTHORITY **Let** TOLL **No** **CS** Ranking Tier **3**

Limits From **FRONTERA ROAD**
 Limits To **NICHOLSON STREET**
 Project Description **REHABILITATION OF AN EXISTING ROADWAY (ALDERETE)** Est Const Cost: \$1,500,000

Programmed Construction Funding

Category	Description	Authorized	Other	Total
10	COORD BORDER INFRASTRUCT	\$1,500,000	\$0	\$1,500,000
Total		\$1,500,000	\$0	\$1,500,000

Previously Authorized

Project Tracker

Projects with Category 2,4, 12 funding are displaying data as of 4/30/2017 during the 2018 UTP development. Projects will be updated after Commission action in August.

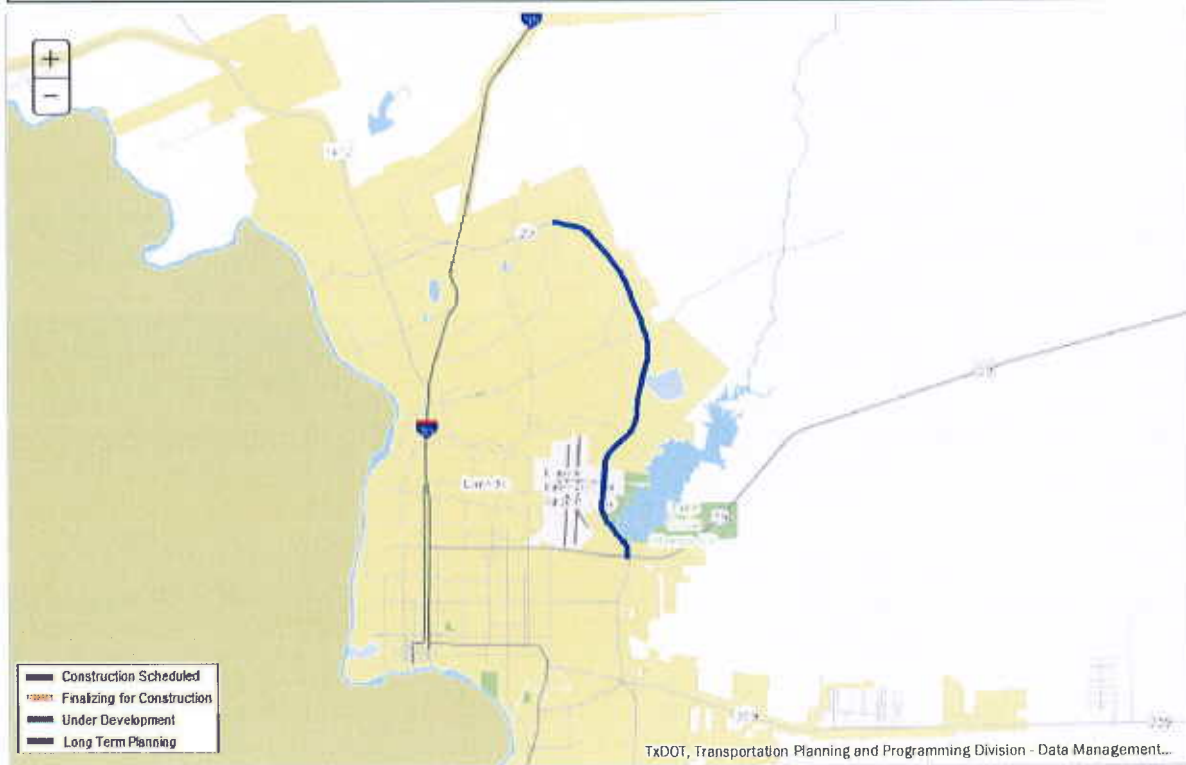
[Export Data](#) | [Help](#) | [About](#)

View Highway Projects By:



Highway	Status	Project ID	District	County	From Limit	To Limit	Description	Construction Cost/Estimate	Tier
US 59	Long Term Planning	008614072	Laredo	Webb	INTERNATIONAL BLVD	US 59/LOOP 20 INTERCHANGE	Upgrade Existing Highway To Freeway Standards	\$175,000,000	NA

1 - 1 of 1 results



[Show All >](#)

Project Summary ▼

Project Summary		Last Updated: 5/1/2017	
Project ID	008614072	District	Laredo
Highway	US 59	Project Length	6.963 Miles
From Limit	INTERNATIONAL BLVD	County	Webb
To Limit	US 59/LOOP 20 INTERCHANGE	Bid Received Date	8/1/2028
Description	Upgrade Existing Highway To Freeway Standards	Project Class	TBD
Project Note	TxDOT Design	Strategic Score	0.00
		Total Score	0

Contact Information ▼

Contact Information		Last Updated: 5/1/2017	
TxDOT Contact Name	Alberto Ramirez, P.E.	Phone	(956) 712-7446
Construction Company	TBD		

Project Construction

Project Milestones

Programmed Funding ▼

Programmed Funding		Last Updated: 5/1/2017	
	Program Identifier	Amount	
Category 10 - Coordinated Border Infrastructure (1010CB)	CBI	\$6,897,669	

Financial Information ▼

Financial Information		Last Updated: TBD	
	Amount Paid to Date		
Project Engineering	\$0		
Construction	\$0		
Construction Engineering	\$0		
Total	\$0		

Vanessa Guerra

From: Randy Aguilar <Randy.Aguilar@txdot.gov>
Sent: Thursday, August 03, 2017 2:55 PM
To: Vanessa Guerra
Subject: RE: TAC agenda

Vanessa,

We do have CSJ's set up for these. They are as follows:

Del Mar 0086-14-075
Shiloh 0086-14-076
Airport 0086-14-077
Jacaman 0086-14-078
University 0086-14-079
PS&E 59-INT 0086-14-082 (this one I had a note it used to be 0086-14-058 I'm looking into this)

From: Vanessa Guerra [<mailto:vguerra@ci.laredo.tx.us>]
Sent: Thursday, August 03, 2017 2:44 PM
To: Randy Aguilar
Subject: FW: TAC agenda

CONNECTING TEXANS TO WHAT MATTERS MOST



#txdot100

1917 • 2017

Vanessa Guerra

From: Randy Aguilar <Randy.Aguilar@txdot.gov>
Sent: Thursday, August 03, 2017 3:10 PM
To: Vanessa Guerra
Subject: 0086-14-058 not 0086-14-082

Vanessa,

FYI

Roberto advised me that the PS&E will be 0086-14-058 not 0086-14-082(will be deleted)

Randy Aguilar
Planner
TxDOT Laredo District
956-712-7457

CONNECTING TEXANS TO WHAT MATTERS MOST



#txdot100

1917 • 2017

Vanessa Guerra

From: Nathan R. Bratton
Sent: Thursday, August 03, 2017 3:22 PM
To: Vanessa Guerra
Subject: MTP construction cost estimates

The construction estimates supplied by the consultant are "year of expenditure" the numbers currently in the UTP were provided under TxDOT Development Authority. Use the consultant's numbers in the MTP and the consultant's number will be picked up by TxDOT in next UTP revision and will eventually reflect the County's plan as proposed by their consultant.

Don't forget there is some CBI money addressed in the TIP that needs to get programmed to CSJ 008614058. It is the packet that consultant sent you.

Respectfully,

Nathan R. Bratton
Director
Planning and Zoning Department
1120 San Bernardo
Laredo, Texas 78040
(956) 794-1613

Vanessa Guerra

From: Antonio Rodriguez <anrodriguez@HNTB.com>
Sent: Friday, June 16, 2017 5:36 PM
To: Vanessa Guerra
Cc: Andres Castaneda
Subject: RE: Vallecillo Road Overpass at IH 35
Attachments: Vallecillo_RUNS - project information summary -.xlsx

Vanessa, as a follow-up to this e-mail from April, please accept the attached document with the project description. Also, please note that we sent to you the schematic for the project in *.dgn format via our HNTB Transfer System.

With these items, please consider this e-mail as the formal request from the Webb County-City of Laredo Regional Mobility Authority to add the Vallecillo Road project from FM 1472 to IH (including the overpass at IH 35) to the Laredo MPO MTP.

If you require any additional information, please feel free to contact me at your convenience.

Sincerely,

Antonio Rodriguez, PE

WCCL RMA GEC Deputy Program Manager
Cell (512) 800-0382

From: Vanessa Guerra [<mailto:vguerra@ci.laredo.tx.us>]
Sent: Friday, April 21, 2017 2:59 PM
To: Antonio Rodriguez <anrodriguez@HNTB.com>
Cc: Andres Castaneda <acastaneda@ci.laredo.tx.us>
Subject: RE: Vallecillo Road Overpass at IH 35

I don't think so. We will be using the schematic to get a general alignment for mapping purposes.

From: Antonio Rodriguez [<mailto:anrodriguez@HNTB.com>]
Sent: Friday, April 21, 2017 2:56 PM
To: Vanessa Guerra
Cc: Nathan R. Bratton; Ruben Soto (rubensotocpa@sbcglobal.net)
Subject: RE: Vallecillo Road Overpass at IH 35

Thanks, Vanessa. We will provide everything that you require. Does the schematic need to show the Overpass at IH 35?

Please let me know.

Thanks.

Antonio Rodriguez, PE

WCCL RMA GEC Deputy Program Manager
Cell (512) 800-0382

From: Vanessa Guerra [<mailto:vguerra@ci.laredo.tx.us>]
Sent: Friday, April 21, 2017 2:53 PM
To: Antonio Rodriguez <anrodriguez@HNTB.com>
Cc: Nathan R. Bratton <nbratton@ci.laredo.tx.us>
Subject: RE: Vallecillo Road Overpass at IH 35

Good afternoon Antonio,

The schematic will help us draw it on the map, but the request to be included in the MTP should be submitted in writing (email is fine), along with necessary project information.

Along with the request email/document, I will need the project summary spreadsheet (see attached) filled out. Simply fill in the information based on the sample project information.

Give me a call with any questions.

Vanessa Guerra
Planner III : City of Laredo Planning Department : Laredo Metropolitan Planning Organization : 1120 San Bernardo Ave. :
P.O. Box 579 : Laredo Texas 78042-579 : Main: 956-794-1613 : Dir.: 956-794-1604 : Fax: 956-794-1624 :
vguerra@ci.laredo.tx.us

From: Antonio Rodriguez [<mailto:anrodriguez@HNTB.com>]
Sent: Friday, April 21, 2017 2:26 PM
To: Nathan R. Bratton; Vanessa Guerra
Cc: Ruben Soto (rubensotocpa@sbcglobal.net)
Subject: Vallecillo Road Overpass at IH 35

Nathan and Vanessa, I hope you are both doing well.

At the February MPO Policy Committee meeting, the topic was discussed regarding the process needed to add the project referenced above to the MTP. I believe the response was to submit the schematic of the project to you to begin the process.

Please note that the current schematic of Vallecillo Road depicts the improvements from FM 1472 (Mines Road) to the IH 35 Southbound Frontage Road. In order to begin the process of adding the project to the MTP, will the overpass need to be included in the schematic, or will a separate schematic need to be created that strictly only shows the overpass at IH 35?

Any clarification you can provide to us would be greatly appreciated.

Sincerely,

Antonio Rodriguez, PE
WCCL RMA GEC Deputy Program Manager
Cell (512) 800-0382

- C. Discussion with possible action on the TxDOT letter dated July 21, 2017 regarding the Advance Acquisition Process/Alternatives along US 59/Loop 20.



1817 BOB BULLOCK LOOP | LAREDO, TEXAS 78043 | (956) 712-7400 | WWW.TXDOT.GOV

July 21, 2017

Nathan Bratton
MPO Director
LUTS-MPO
1120 San Bernardo Avenue
Laredo, Texas 78042-0579

Re: Advance Acquisition Process/Alternatives along US 59/Loop 20

Dear Mr. Bratton,

We are in receipt of your letter dated July 14, 2017 in regards to the right of way acquisition process and alternative acquisition scenarios for the US 59/Loop 20 project.

The following are your questions along with responses in detail.

1. Can the City of Laredo, in advance to TxDOT's acquisition efforts, purchase property along the US 59/Loop 20 corridor and then sell the property to TxDOT at its cost of acquisition or at fair market values?

Response: Transportation Code §203. 055(b) gives legal authority for Local Public Agencies (LPA) to convey land to TxDOT for highway purposes. Under these provisions, the LPA governing body is authorized to make right of way conveyances to the State of any property needed for, or in connection with, the construction or operation of the State highway system.

Lands that have been acquired by LPA's for highway, street, road, or alley purposes before TxDOT authorization for project right of way funding has been obtained, or that are in use for these purposes and needed by TxDOT for construction or operation of the State highway system, should be made available at no cost to the State.

If an LPA chooses to purchase property with its own funds prior to completion of the environmental process, it may do so and not jeopardize Federal participation in future project costs if certain requirements are met. These include:

- The acquired property must not influence the need for or location of the project.
- The acquisition must comply with the Uniform Relocation Assistance and Real Property Acquisition Policies Act of 1970, as amended.
- The acquisition must comply with Title VI of the Civil Rights Act of 1964.
- The acquisition must not include lands protected by Section 4(f) of the DOT Act.

OUR VALUES: People • Accountability • Trust • Honesty

OUR MISSION: Through collaboration and leadership, we deliver a safe, reliable, and integrated transportation system that enables the movement of people and goods.

An Equal Opportunity Employer

Nathan Bratton

2

July 21, 2017

- The final project must meet all requirements for a normal Federal project such as compliance with NEPA, Historical Preservation Act, Endangered Species Act, Wetland Executive Order, etc.
- Early acquisitions must not be used to circumvent Federal laws or regulations.
- Federal funds (including future state pass thru repayments) may not be utilized to pay right of way costs incurred prior to final approval of the environmental document.
- Parcels acquired through early acquisition shall be numbered according to the Parcel Numbering Chart, on all right of way maps for the relevant project.

Please note that any early acquisition by the LPA would be done at its own financial risk. Early LPA acquisition causes considerable problems when displacements are involved since state relocation funding cannot be set up prior to completion of public involvement and final environmental clearance. The LPA will be responsible for relocation costs.

2. If so, can some or all of the City acquired property be used to offset the City's 10% contribution?

Response: Our standard agreement to contribute right of way funds states the following under *Article 4: Real Property in Lieu of Monetary Payment*

Contributions of real property may be credited to the Local Government's funding obligation for the cost of right of way to be acquired for this project. Credit for all real property, other than property which is already dedicated or in use as a public road, contributed by the Local Government to the State shall be based on the property's fair market value established as of the effective date of this agreement. The fair market value shall not include increases or decreases in value caused by the project and should include the value of the land and improvements being conveyed, excluding any damages to the remainder.

The Local Government will provide to the State all documentation to support the determined fair market value of the donated property. This documentation shall include an appraisal of the property by a licensed appraiser approved by the State. The cost of appraisal will be the responsibility of the State. The State will review the submitted documentation and make a final determination of value; provided however, the State may perform any additional investigation deemed necessary, including supplemental appraisal work by State employees or employment of fee appraisers.

Credit shall be given only for property transferred at no cost to the State after the effective date of this agreement and the issuance of spending authority, and only for property which is necessary to complete this project, has title acceptable to the State, and is not contaminated with hazardous materials. Credit shall be in lieu of monetary contributions required to be paid to the State for the Local Government's funding share of the right of way to be acquired for this project. The total credit cannot exceed the Local Government's matching share of the right of way obligation under this agreement, and credits cannot be reimbursed in cash to the Local Government, applied to project phases other than right of way, nor used for other projects.

OUR VALUES: People • Accountability • Trust • Honesty

OUR MISSION: Through collaboration and leadership, we deliver a safe, reliable, and integrated transportation system that enables the movement of people and goods.

An Equal Opportunity Employer

Nathan Bratton

3

July 21, 2017

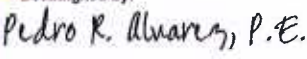
In the event the Local Government's monetary contributions to the State for acquisition of right of way, when added to its real property credits, exceed the Local Government's matching share of the right of way obligation, there will be no refund to the Local Government of any portion of its contributed money.

3. Entities within Webb County are currently eligible for EDC relief but may not be in the future. As you know, the general cost of r-o-w that has been presented by TxDOT is two hundred million dollars (\$200,000,000) and TxDOT representatives presented a timeline to the MPO Policy Committee indicating that City's participation will be due in March 2018. Since the City is currently going through its budget process for FY 2018, will a ROW Participation Agreement be forthcoming this fiscal year while the EDC relief is 71% equaling a participation of \$5.8 million and a savings of \$14.2 million for the taxpayers of the community?

Response: We are pending a final estimate based on the latest schematic from consultant to move forward with agreement. Since the agreement is considered a Fixed Price Agreement, we need to carefully analyze the estimate before submitting the agreement for execution. After carefully analyzing the estimate, we will forward the agreement to the City of Laredo for execution. Any real property to be used in lieu of monetary payment will be used at the time of the execution of the agreement. It is anticipated that we will have a final estimate within the next few weeks.

We look forward working with the MPO and City of Laredo to deliver this project to construction. Should you have any questions or concerns on the responses, do not hesitate to contact Gustavo Elizondo, Lead R/W Agent at 956-712-7462 or Gabriel Lopez, South R/W Supervisor at 512-422-3226.

Sincerely,

DocuSigned by:

Pedro R. Alvarez, P.E.
Laredo District Engineer

CC: Melisa Montemayor, Laredo District Administrator, TxDOT
Alberto Ramirez, TP&D Director, TxDOT
Roberto Rodriguez, Planning Supervisor, TxDOT
Ana Duncan, P.E., Project Manager, TxDOT
Mike Graham, Environmental Specialist, TxDOT
Gustavo Elizondo, Lead Right of Way Agent, TxDOT R/W Division
Gabriel Lopez, South R/W Supervisor, TxDOT R/W Division

OUR VALUES: People • Accountability • Trust • Honesty

OUR MISSION: Through collaboration and leadership, we deliver a safe, reliable, and integrated transportation system that enables the movement of people and goods.

An Equal Opportunity Employer

Laredo Urban Transportation Study Metropolitan Planning Organization

July 14, 2017

Mr. Pedro Alvarez
District Engineer
Laredo District
Texas Department of Transportation
1817 Bob Bullock Loop
Laredo, TX 78043

In preparation for the upcoming meeting on Monday July 17, 2017 I was reviewing the video of the MPO Policy meeting of June 19, 2017. During discussion of Item V.B. (Presentation, discussion and possible action on Loop 20/I 69 funding plan, sponsored by Webb County for inclusion of construction funds for Five overpasses along Loop 20 into the LUTS-MPO documents), you requested the Policy Committee send a formal letter requesting information regarding the right-of-way acquisition process and possible alternative acquisition scenarios along US 59/Loop 20. While the discussion you had with the other members of the Policy Committee was fairly far ranging the following were of concern:

1. Can the City of Laredo, in advance of TxDOT's acquisition efforts, purchase property along the US 59/Loop 20 corridor and then sell the property to TxDOT at its cost of acquisition or at fair market values?
2. If so, can some or all of the City acquired property be used to offset the City's 10% contribution?
3. Entities within Webb County are currently eligible for EDC relief but may not be in the future. As you know, the general cost of r-o-w that has been presented by TxDOT is two hundred million dollars (\$200,000,000) and TxDOT representatives presented a timeline to the MPO Policy Committee indicating that City's participation will be due in March of 2018. Since the City is currently going through its budget process for FY 2018, will a R-O-W Participation Agreement be forthcoming this fiscal year while the EDC relief is 71% equaling a local participation of \$5.8 million and a savings of \$14.2 million for the taxpayers of the community?

Sincerely,



Nathan R. Bratton

CC: Policy Committee Members

Vanessa Guerra

From: Nathan R. Bratton
Sent: Friday, August 11, 2017 3:23 PM
To: Angelica Quijano; Vanessa Guerra
Subject: FW: Advance Acquisition Process/Alternatives along US59/Loop 20
Attachments: response letter_bratton 7-21-17.docx.pdf

From: Nancy Cordero [<mailto:Nancy.Cordero@txdot.gov>]
Sent: Friday, July 21, 2017 4:10 PM
To: Nathan R. Bratton
Cc: Melisa Montemayor; Alberto Ramirez; Roberto Rodriguez III; Ana Duncan; Mike Graham; Gustavo Elizondo Jr; Gabriel Lopez
Subject: Advance Acquisition Process/Alternatives along US59/Loop 20

Mr. Bratton, on behalf of Pedro Alvarez, attached please find the letter regarding the Advance Acquisition Process/Alternatives along US 59/Loop 20.



Nancy L. Cordero
Executive Assistant
Texas Department of Transportation
Laredo District
1817 Bob Bullock Loop
Laredo, Texas 78043
956-712-7410 (Office)
956-712-7401 (Fax)
Nancy.Cordero@txdot.gov

CONNECTING TEXANS TO WHAT MATTERS MOST



#txdot100

1917 • 2017

Vanessa Guerra

From: Nathan R. Bratton
Sent: Monday, July 24, 2017 9:54 AM
To: Vanessa Guerra
Subject: FW: Advance Acquisition Process/Alternatives along US59/Loop 20
Attachments: response letter_bratton 7-21-17.docx.pdf

Please make sure the attached letter is sent to each of the policy committee members. It should also be on the next agenda for discussion and possible action.

From: Nancy Cordero [<mailto:Nancy.Cordero@txdot.gov>]
Sent: Friday, July 21, 2017 4:10 PM
To: Nathan R. Bratton
Cc: Melisa Montemayor; Alberto Ramirez; Roberto Rodriguez III; Ana Duncan; Mike Graham; Gustavo Elizondo Jr; Gabriel Lopez
Subject: Advance Acquisition Process/Alternatives along US59/Loop 20

Mr. Bratton, on behalf of Pedro Alvarez, attached please find the letter regarding the Advance Acquisition Process/Alternatives along US 59/Loop 20.



Nancy L. Cordero
Executive Assistant
Texas Department of Transportation
Laredo District
1817 Bob Bullock Loop
Laredo, Texas 78043
956-712-7410 (Office)
956-712-7401 (Fax)
Nancy.Cordero@txdot.gov

CONNECTING TEXANS TO WHAT MATTERS MOST



#txdot100

1917 • 2017

The first part of the document discusses the importance of maintaining accurate records of all transactions. This includes not only sales and purchases but also any other financial activities that may occur during the course of the business. Proper record-keeping is essential for determining the true financial position of the company at any given time.

In addition to maintaining accurate records, it is also important to regularly review these records to identify any potential areas of concern. This may include analyzing trends in sales and expenses, as well as identifying any unusual or suspicious transactions. Regular reviews can help to detect and prevent fraud, as well as ensure that the company is operating in a financially sound manner.

Finally, it is important to ensure that all financial records are properly stored and protected. This may involve using secure storage methods, such as encrypted digital files or locked physical files. It is also important to have a backup plan in place in case of a disaster or data loss. Proper storage and protection of financial records are essential for ensuring the integrity and accuracy of the company's financial information.

In conclusion, maintaining accurate records of all transactions is a critical component of sound financial management. By regularly reviewing these records and ensuring they are properly stored and protected, a company can ensure that its financial information is accurate and reliable. This, in turn, can help to build trust with investors and other stakeholders, and ensure the long-term success of the business.

The second part of the document discusses the importance of maintaining accurate records of all transactions. This includes not only sales and purchases but also any other financial activities that may occur during the course of the business. Proper record-keeping is essential for determining the true financial position of the company at any given time.

In addition to maintaining accurate records, it is also important to regularly review these records to identify any potential areas of concern. This may include analyzing trends in sales and expenses, as well as identifying any unusual or suspicious transactions. Regular reviews can help to detect and prevent fraud, as well as ensure that the company is operating in a financially sound manner.

D. Discussion with possible action to include High Occupancy Vehicles (HOV) lanes for FM 1472 (Mines Road).

1. Report technical memorandum developed by TxDOT on steps necessary to implement HOV Lanes on Mines Road.

E. Discussion with possible action to restripe and/or add Right-of-Way for bicycle on FM 1472 (Mines Road).

1. Report by TxDOT on procedures necessary to implement a bike lane on Mines Road.

- F. Discussion with possible action to place digital signage on FM 1472 (Mines Road) to notify the driving public of congestion.
 - 1. Report by TxDOT on possible sign locations, cost estimates, and funding sources for digital signage on Mines Road.

The first part of the document discusses the importance of maintaining accurate records of all transactions. It emphasizes that every entry, no matter how small, should be recorded to ensure the integrity of the financial statements. This includes not only sales and purchases but also expenses, income, and any other financial activity.

The second part of the document provides a detailed breakdown of the accounting cycle. It outlines the ten steps involved in the process, from identifying the accounting entity to preparing financial statements. Each step is explained in detail, with examples provided to illustrate the concepts.

The third part of the document discusses the various types of accounts used in accounting. It explains the difference between assets, liabilities, and equity accounts, as well as the classification of expenses and revenues. It also covers the concept of debits and credits, which are essential for understanding how transactions are recorded.

The fourth part of the document provides a comprehensive overview of the accounting system. It discusses the role of the accountant, the importance of internal controls, and the various methods used to collect and analyze financial data. It also touches upon the legal and ethical responsibilities of accountants.

The final part of the document concludes with a summary of the key points discussed throughout the document. It reiterates the importance of accuracy, integrity, and transparency in accounting, and encourages students to apply these principles in their future professional careers.

G. Discussion with possible action on the \$2.4 million, Proposition 1, Category 2 funds allocated to project CSJ 0086-14-077, intended to provide for construction of an interchange at the international airport, with an estimated construction cost of \$14,785,990. Latest estimated letting date is fiscal year (FY) 2024.

H. Discussion with possible action on Hachar Road.

V. REPORT(S) AND PRESENTATIONS (No action required)

- A. Presentation by Webb County intended to visually demonstrate the layout of the Airport overpass designed so as to avoid encroachment on the Armory or the Airport's property.
- B. TxDOT report on the status of ongoing construction projects.
- C. TxDOT report on the development of the grade separation at IH 35 and the Union Pacific Railroad, the Uniroyal grade separation, and any other similar projects.
- D. Status report on the Regional Mobility Authority (RMA).
- E. Letting date for Flecha Lane/Las Cruces realignment project CSJ 0922-33-076 is proposed to be moved from September 2017 (FY 2018) to August 2018 (FY 2018.)



125 EAST 11TH STREET | AUSTIN, TEXAS 78701-2483 | (512) 463 8588 | WWW.TXDOT.GOV

July 31, 2017

Agenda item #V-E.

Mr. Gabriel Martinez, P.E.
Assistant City Engineer
City of Laredo Engineering Department
1110 Houston St.
Laredo, Texas 78042

Re: Flecha/Las Cruces Realignment: Letting Date Update
CSJ 0922-33-076, Webb County

Dear Mr. Martinez:

Since early June 2017, we have been requesting a status update to the proposed letting date for the subject project. A project must be "ready to let" a minimum of four months prior to the actual letting month/year. As of the date of this letter, the project is scheduled for letting in September 2017 and has not met the "ready to let" definition.

Ready to Let Definition:

- Environmentally cleared and Environmental mitigation completed
- Environmental permits secured
- Right-of-Way cleared (acquisition, abatement, demolition, etc.)
- Schematic approved
- 100% PS&E completed
- Project agreements in place (Local funding received)
- Railroad Coordination/Agreements in place
- Utility agreements in place/relocations in progress and/or scheduled

In your response email, you confirmed that the project is still, at a minimum, pending completion of ROW acquisition and Corps of Engineering approval for mitigation issues. Without proposing a new letting date, you also indicated that the project will not be "ready to let" in 2017. Please be informed that TxDOT will be proposing to change the let date for this project to August 2018 (FY 2018), until further advisement from the City of Laredo. This will require an administrative update in the STIP and will be presented as such during the next available Laredo MPO meeting.

Should you have any questions, please do not hesitate to contact me at 956-712-7446.

Sincerely,

Alberto Ramirez, P.E.
Director of Transportation Planning & Development

CC: Rogelio Rivera, P.E., City Engineer, City of Laredo
Nathan Bratton, P.E., Director of Planning, City of Laredo
Pedro R. Alvarez, P.E., Laredo District Engineer, TxDOT
Melisa Montemayor, Laredo District Administrator, TxDOT
Ana Duncan, P.E., Project Manager, TxDOT

OUR GOALS

MAINTAIN A SAFE SYSTEM • ADDRESS CONGESTION • CONNECT TEXAS COMMUNITIES • BEST IN CLASS STATE AGENCY

An Equal Opportunity Employer

Vanessa Guerra

From: Roberto Rodriguez III <Roberto.Rodriguez@txdot.gov>
Sent: Friday, August 04, 2017 8:56 AM
To: Vanessa Guerra
Subject: MPO....CSJ 0922-33-076 Flecha Realignment - Letting Update
Attachments: SCAN_IMAGE_6048.pdf

We need to add to MPO agenda as administrative update.

Thanks,

Roberto Rodriguez, P.E.
TP&D-Advanced Planning Supervisor
Laredo District
1817 Bob Bullock Lp
Laredo TX 78043
(956) 712-7735 (Direct)
(956) 333-4075 (Cell)

From: Ana Duncan
Sent: Friday, August 04, 2017 8:45 AM
To: Roberto Rodriguez III
Cc: Alberto Ramirez; Randy Aguilar
Subject: FW: CSJ 0922-33-076 Flecha Realignment - Letting Update

Roberto,

Please submit the attached to the Laredo MPO as an administrative update for the next available meeting. The Flecha Realignment Project (CSJ 0922-33-076) will not be letting in September 2017 (FY 18) and is being moved to August 2018 (FY 18) until further update from the City of Laredo.

Thank you.

Ana A. Duncan, P.E.
Transportation Engineer

Texas Department of Transportation – Laredo District
1817 Bob Bullock Loop * Laredo, TX 78043
O: 956/712-7460 F: 956/712-7401
Email: ana.duncan@txdot.gov

From: Ana Duncan
Sent: Monday, July 31, 2017 5:48 PM
To: Gabriel Martinez
Cc: 'rrivera@ci.laredo.tx.us'; Nathan R. Bratton
Subject: CSJ 0922-33-076 Flecha Realignment - Letting Update

Good afternoon Gabriel,

See attached regarding new proposed letting date. Hard copy to follow. Thank you.

Ana A. Duncan, P.E.
Transportation Engineer

Texas Department of Transportation – Laredo District
1817 Bob Bullock Loop * Laredo, TX 78043
O: 956/712-7460 F: 956/712-7401
Email: ana.duncan@txdot.gov

CONNECTING TEXANS TO WHAT MATTERS MOST



#txdot100

1917 • 2017

Ana Duncan

From: Gabriel Martinez, Jr. <gmartinez@ci.laredo.tx.us>
Sent: Friday, July 28, 2017 2:42 PM
To: Ana Duncan
Cc: Rogelio Rivera; Nathan R. Bratton
Subject: FW: CSJ 0922-33-076 - Bridge Submittal Review comments

Ana:

From the land acquisition perspective, I have been unable to get a timeline for the pending parcels at this point.

Also, as you know, the mitigation issue is also pending, as per TxDOT e-mail from Maria Rogers dated yesterday, July 27, 2017 & related pending approval from Corps of Engineers.

At this point, I do not foresee reaching a point anytime in 2017 when we will be ready with 100% completion / approval 4 months before advertising for bids.

I will follow up with you as I soon as I have with something more concrete from the other parties involved.

Gabriel Martinez, PE
Assistant City Engineer
City of Laredo Engineering Dept
Laredo, Texas 78040
Phone: (956)791-7346
Fax: (956)791-7496
e-mail: gmartinez@ci.laredo.tx.us

-----Original Message-----

From: Arturo Garcia
Sent: Friday, July 28, 2017 2:05 PM
To: Gabriel Martinez, Jr.; Jessica Nelson
Cc: Rogelio Rivera; Linda Teniente
Subject: RE: CSJ 0922-33-076 - Bridge Submittal Review comments

Gabriel, not sure if you knew but today is Jessica's last day. Linda Teniente will be taking over the duties as acting real estate manager effective Monday. We'll have to sit down with you to sort out what is pending.

-----Original Message-----

From: Gabriel Martinez, Jr.
Sent: Thursday, July 27, 2017 2:41 PM
To: Arturo Garcia <agarcia@ci.laredo.tx.us>; Jessica Nelson <jnelson@ci.laredo.tx.us>
Cc: Rogelio Rivera <rrivera@ci.laredo.tx.us>
Subject: FW: CSJ 0922-33-076 - Bridge Submittal Review comments
Importance: High

Arturo/ Jessica:

Please provide an estimated schedule for the remainder of acquisition of pending parcels for the Flecha project.

Ana Duncan

From: Ana Duncan
Sent: Monday, July 24, 2017 1:46 PM
To: 'Gabriel Martinez, Jr.'
Cc: 'Rogelio Rivera'; 'Arturo Garcia'; 'Angelita C. Ramos'; Ricardo De La Parra; Alberto Ramirez; Roberto Rodriguez III
Subject: RE: City of Laredo - Flecha project - letting dates

Good afternoon Gabriel,

We have been asking since early June for an updated letting date for the Flecha Realignment project (CSJ 0922-33-076). We understand that you are coordinating with your Consultant, but the decision must come from the City of Laredo as soon as possible. A project must be "ready to let" a minimum of 4 months prior to the actual letting month/year. In order to be accepted as "ready to let" a project must have complete PS&E, all ROW, ENV and Utility clearances, which includes utility coordination complete with relocations underway or scheduled accordingly. This project is currently scheduled for a September 2017 letting and must be moved as soon as possible.

Please provide an updated letting date for this project, in writing from City of Laredo, by this Friday, July 28, 2017. If we do not receive an update, we will be required to move the let date and notify the Laredo MPO accordingly.

Should you have any questions or concerns, feel free to contact me. Thank you.

Ana A. Duncan, P.E.
Transportation Engineer

Texas Department of Transportation - Laredo District
1817 Bob Bullock Loop * Laredo, TX 78043
O: 956 712-7460 F: 956/712-7101
E mail: ana@tcdan.txdot.gov

From: Ana Duncan
Sent: Wednesday, June 21, 2017 8:14 AM
To: Gabriel Martinez, Jr.
Cc: Jeffrey G. Puig, P.E., R.P.L.S.; Rogelio Rivera; Arturo Garcia; Angelita C. Ramos; 'Kyle Gass, P.E., CFM'; Edward L. Ochoa P.E., S.I.T., CFM; Julio Ramos, P.E., PTOE; Ricardo De La Parra; Alberto Ramirez; Roberto Rodriguez III
Subject: Fwd: City of Laredo - Flecha project - letting dates

Gabriel,

With this information from your Consultant, the City should be able to propose a reasonable letting date. Keep in mind the definition of "ready to let." This is not just complete PS&E, but also includes all ROW, ENV and Utility clearance letters. As was discussed with other projects, utility coordination needs to be complete with relocations underway before the project should be submitted for letting.

We await your response. If you have any questions or would like to discuss, please do not hesitate to call us. Thank you.

Ana A. Duncan, P.E.
Transportation Engineer

Texas Department of Transportation - Laredo District
1817 Bob Bullock Loop * Laredo, TX 78043
O: 956-712-7460 F: 956/712-7401
E-mail: ana.duncan@txdot.gov

From: Kyle Gass, P.E., CFM [<mailto:kgass@cectexas.com>]
Sent: Tuesday, June 20, 2017 4:22 PM
To: Gabriel Martinez, Jr.
Cc: Jeffrey G. Puig, P.E., R.P.L.S.; Rogelio Rivera; Arturo Garcia; Angelita C. Ramos; Ana Duncan; Edward L. Ochoa P.E., S.I.T., CFM; Jullo Ramos, P.E., PTOE
Subject: RE: City of Laredo - Flecha project - letting dates

Gabriel,

Thanks for following up on this. Been trying to catch up on everything since getting back in the office.

Our current schedule anticipates that we will receive Corps Approval for the mitigation plan in October. I believe that would fulfill the environmental clearance, so we'll target October to submit final plans. That means 90% plans will be submitted in August for review and comment. Final plans in October I believe means letting around December or January.

We need to confirm that the utility relocations will be completed to allow for letting. Will also need city input on the status of ROW acquisitions and funding agreements.

Thanks,

Kyle Gass, P.E., CFM

Principal - Division Manager

CEC

Texas Firm Registration Numbers
Engineering F 2214 & Surveying 100410 00
11550 IH 10 West, Suite 395 | San Antonio, TX 78230
Tel: 210-641-9999 Fax: 210-641-6440
Direct: 210-798-9218

From: Gabriel Martinez, Jr. [<mailto:gmartinez@ci.laredo.tx.us>]
Sent: Tuesday, June 20, 2017 1:43 PM
To: Kyle Gass, P.E., CFM <kgass@cectexas.com>
Cc: Jeffrey G. Puig, P.E., R.P.L.S. <jpuig@cectexas.com>; Rogelio Rivera <rrivera@ci.laredo.tx.us>; Arturo Garcia <agarcia@ci.laredo.tx.us>; Angelita C. Ramos <aramos1@ci.laredo.tx.us>; Ana Duncan <Ana.Duncan@txdot.gov>
Subject: RE: City of Laredo - Flecha project - letting dates

Please provide a status regarding the email request below.

From: Gabriel Martinez, Jr.
Sent: Thursday, June 08, 2017 8:40 AM

To: 'Kyle Gass'
Cc: Jeffrey G. Puig; Rogelio Rivera; Arturo Garcia; Angelita C. Ramos
Subject: FW: City of Laredo - Flecha project - letting dates
Importance: High

Kyle:

Can you please respond to this TxDOT concern with any needed schedule revisions?

Thanks,

Gabriel Martinez, PE
Assistant City Engineer
City of Laredo Engineering Dept
Laredo, Texas 78080
Phone: (956)791-7346
Fax: (956)791-7496
e-mail: gmartinez@ci.laredo.tx.us

From: Ana Duncan [<mailto:Ana.Duncan@txdot.gov>]
Sent: Tuesday, June 06, 2017 3:41 PM
To: Gabriel Martinez, Jr.
Cc: Rogelio Rivera; Ricardo De La Parra
Subject: City of Laredo - Calton & Flecha projects - letting dates

Good afternoon Gabriel,

With Fiscal Year 2018 fast approaching, we are beginning to confirm let dates for fiscal year 2018. The fiscal year is from September 1, 2017 to August 31, 2018. We have two projects with the City of Laredo currently scheduled in FY 18. Flecha Realignment (CSJ 0922-33-076) – September 2017 (Ready to Let date: May 2017)
Calton Road (CSJ 0922-33-093) - November 2017 (Ready to let date: July 2017)

The ready to let date for Flecha has already passed and that for Calton is fast approaching. Based on discussions with the utility companies, a November letting date for Calton may not be attainable. **Please propose a new letting date for each of these projects in writing as soon as possible. Your prompt response is appreciated.**

A project must meet the "ready to let" definition at least 4 months prior to the letting date:

- Environmental clearance complete
- Environmental permits secured
- ROW cleared (acquisition, abatement, demolition, etc.)
- Schematic approved (if applicable)
- 100% Plans, Specifications and Estimate (PS&E)
- Project agreements in place (Local funding received)
- Railroad Coordination/agreements in place (if applicable)
- Utility agreements in place/relocations completed or in progress and near completion

Please let us know if you have any questions.

Thank you.

Ana A. Duncan, P.E.