

Laredo Urban Transportation Study

Metropolitan Planning Organization Policy Committee

Notice of Public Meeting

**City of Laredo City Hall
City Council Chambers
1110 Houston Street
Laredo, Texas
July 18, 2016
12:00 noon**

MEETING AGENDA

- I. CHAIRPERSON TO CALL MEETING TO ORDER
- II. CHAIRPERSON TO CALL ROLL
- III. COMMITTEE AND DIRECTOR'S REPORTS
- IV. CITIZEN COMMENT

Speakers are required to fill out a witness card and submit it to the MPO staff no later than 15 minutes after the start of the meeting. The speaker shall identify themselves at the microphone. Comments are limited to three (3) minutes per speaker. No more than three (3) persons will be allowed to speak on any side of an issue. Should there be more than three (3) people who wish to speak on a particular issue, they need to select not more than three (3) representatives to speak for them and the presiding officer may limit the public comments further in the interest of an orderly meeting. Speakers may not pass their minutes to any other speaker. Comments should be relevant to City business and delivered in a professional manner. No derogatory remarks will be permitted.

- V. ITEMS REQUIRING POLICY COMMITTEE ACTION
 - A. Approval of the minutes for the meeting held on June 20, 2016.
 - B. Receive public testimony and approve Resolution No. MPO 2016-08, adopting the proposed FY 2017 Unified Planning Work Program (UPWP).
 - C. Discussion with possible action on the proposed amendment of the Highway MTP/TIP to revise funding on projects 0086-14-081 and 0086-14-065 to facilitate programming of grade separations along Loop 20/U.S. 59 from US 59 to Jacaman for engineering, Right-of-Way acquisition, and construction as proposed by Webb County.

- D. Receive public testimony and approve Resolution No. MPO 2016-09, adopting the proposed revision(s) of the 2015-2040 Laredo Metropolitan Transportation Plan (MTP), which are as follows:
1. Amending Table 12-10, entitled Roadway and Bicycle/Pedestrian Project Summary and Table 12-12 and 12-15, entitled Category 7 and 10 Roadway Projects, respectively, Figure 13-1, entitled Natural Resources and Federally Funded Projects; Figure 13-2, entitled Cultural Resources and Federally Funded Projects; Figure 13-3, entitled Low Income Areas and Federally Funded Projects; Table 13-1, entitled Federally Funded Projects Environmental Assessment Results; Table 13-3, entitled Federally Funded Projects and Environmental Justice Populations and Table 13-4 entitled Colonias and Federally Funded Projects by:
 - a. **Adding** project CSJ 0086-14-081 intended to provide for the constructing and engineering of the ITS portion of an interchange facility over IH35, from 1.400 miles west of IH 35 to 0.600 miles west of McPherson Road, with an estimated project cost of \$1,000,000. Proposed project letting date is FY 2017 (January 2017).
 - b. **Adding** project CSJ 0922-33-175 intended to provide funds for PS&E (including right-of-way mapping) for the Hachar-Reuthinger Road Project from FM 1472 to IH35 with an estimated project cost of \$1,634,277. Proposed letting date is FY 2017 (February 2017).
 - c. **Revising** project CSJ 0922-33-165 intended to provide for construction, engineering, and contingencies for the Hachar-Reuthinger Road Project, from FM 1472 to 0.1 miles east of Beltway Parkway. **Purpose** of amendment is to revise funding amounts from \$22,936,054 in local funds to \$21,437,521 in Category 7 funds and \$5,359,380 in local funds. Proposed letting date is FY 2019 (September 2018).
 - d. **Revision** of CSJ 0922-33-166 intended to provide for the construction, engineering and contingencies for the Hachar-Reuthinger Road project, a 5 lane rural roadway, from 0.1 miles east of Beltway Parkway to IH 35 West Frontage Road. Purpose of amendment is to revise funding amounts from \$28,193,851 in local funds to \$17,152,535 in Category 7 funds and \$3,430,507 in local funds. Proposed letting year is FY 2023.
- E. Receive public testimony and approve Resolution No. MPO 2016-10 adopting the proposed revision(s) of the 2017-2020 Transportation Improvement Program (TIP):
1. **Addition** of project CSJ 0086-14-065 intended to construct an interchange facility over IH35, from 0.330 miles west of IH 35 to 0.160 miles west of McPherson Road, with an estimated project cost of \$38,100,000. Proposed project letting date is FY 2017 (January 2017).

2. **Addition** of project CSJ 0086-14-081 intended to provide for the constructing and engineering of the ITS portion of an interchange facility over IH35, from 1.400 miles west of IH 35 to 0.600 miles west of McPherson Road, with an estimated project cost of \$1,000,000. Proposed project letting date is FY 2017 (January 2017).
3. **Addition** of a project CSJ 0922-33-175 intended to provide funds for PS&E (including right-of-way mapping) for the Hachar-Reuthinger Road Project from FM 1472 to IH35 with an estimated project cost of \$1,634,277. Proposed letting date is February 2017 (FY 17).
4. **Revision** of project CSJ 0922-33-165 intended to provide for construction, engineering, and contingencies for the Hachar-Reuthinger Road Project, from FM 1472 to Beltway Parkway. **Purpose** of amendment is to revise funding amounts from \$22,936,054 in local funds to \$21,437,521 in Category 7 funds and \$5,359,380 in local funds. Proposed letting date is FY 2019 (September 2018).
5. **Revision** of project CSJ 0922-33-076 intended to realign Flecha Lane and Las Cruces along FM 1472. **Purpose** of amendment is to revise the existing funding amounts. Funding amounts will be adjusted from \$1,372,973 Category 10 funds and \$707,412 local funds to \$1,440,411 in Category 10 funds, and \$606,788 local funds.
6. **Revision** of project CSJ 0922-33-093 intended to construct a grade separation at the Calton Road/Santa Maria intersection. **Purpose** of amendment is to revise the existing funding amounts. Funding amounts will be adjusted from \$10,139,817 Category 10 funds and \$11,938,307 local funds to \$12,926,124 Category 10 funds, and 10,088,018 local funds.

F. Discussion with possible action on Mines Road.

VI. REPORT(S) AND PRESENTATIONS (No action required)

- A. Status report on the Regional Mobility Authority (RMA).
 1. Report on Feasibility Study of a possible Transportation Reinvestment Zone (TRZ) on Vallecillo Road.
 2. Status of the RMA's FASTLANE Grant.
 3. Status of the Loop 20 project.
- B. Status report by TxDOT on public and private acreage Right-of-Way on the US 59/ Loop 20 Project.
- C. Status report by TxDOT on the Fast Lane Grant application submitted for the Main Lanes on Loop 20 over IH 35.

VII. ADJOURNMENT

THIS NOTICE WAS POSTED AT THE MUNICIPAL GOVERNMENT OFFICES, 1110 HOUSTON STREET, LAREDO, TEXAS, AT A PLACE CONVENIENT AND READILY ACCESSIBLE TO THE PUBLIC AT ALL TIMES. SAID NOTICE WAS POSTED BY JULY 15TH, BY 12:00 P.M.

Persons who plan to attend this meeting and who may need auxiliary aid or services, such as: interpreters for persons who are deaf or hearing impaired, readers of large print or Braille, or a translator for the Spanish language are requested to contact Ms. Vanessa Guerra, City Planning, 1120 San Bernardo Ave. at (956) 794-1613, vguerra@ci.laredo.tx.us, at least five working days prior to the meeting so that appropriate arrangements can be made. Materials in Spanish may also be provided upon request.

Información en Español: Personas que planean asistir a esta reunión y que pueden necesitar ayuda o servicios, auxiliares como: intérpretes para personas sordas o con discapacidad auditiva, lectores de letra grande o en Braille, o un traductor para el idioma español deben comunicarse con la Sra Vanessa Guerra, en el Departamento de Planificación de la Ciudad, 1120 San Bernardo Ave. al (956) 794-1613, vguerra@ci.laredo.tx.us, al menos cinco días hábiles antes de la reunión para que los arreglos apropiados se pueden hacer. Materiales en español se proveerán a petición.

 **DISABILITY ACCESS STATEMENT** 

This meeting is wheelchair accessible. The accessible entrances are located at 1110 Victoria and 900 Flores. Accessible parking spaces are located at City Hall, 1110 Victoria.

CITY OF LAREDO REPRESENTATIVES:

Honorable Pete Saenz, Mayor and LUTS Chairperson
Honorable Charlie San Miguel, City Councilmember, District VI
Honorable George Altgelt, City Councilmember, District VII

LAREDO MASS TRANSIT BOARD REPRESENTATIVE:

Honorable Roberto Balli, City Councilmember, District VIII

COUNTY OF WEBB REPRESENTATIVES:

Honorable Tano E. Tijerina, Webb County Judge
Honorable John Galo, Webb County Commissioner, Pct. 3
Honorable Jaime Canales, Webb County Commissioner, Pct. 4

STATE REPRESENTATIVES:

Mr. Pete Alvarez, P.E., District Engineer
Ms. Melisa Montemayor, District Administrator

**** EX-OFFICIO ****

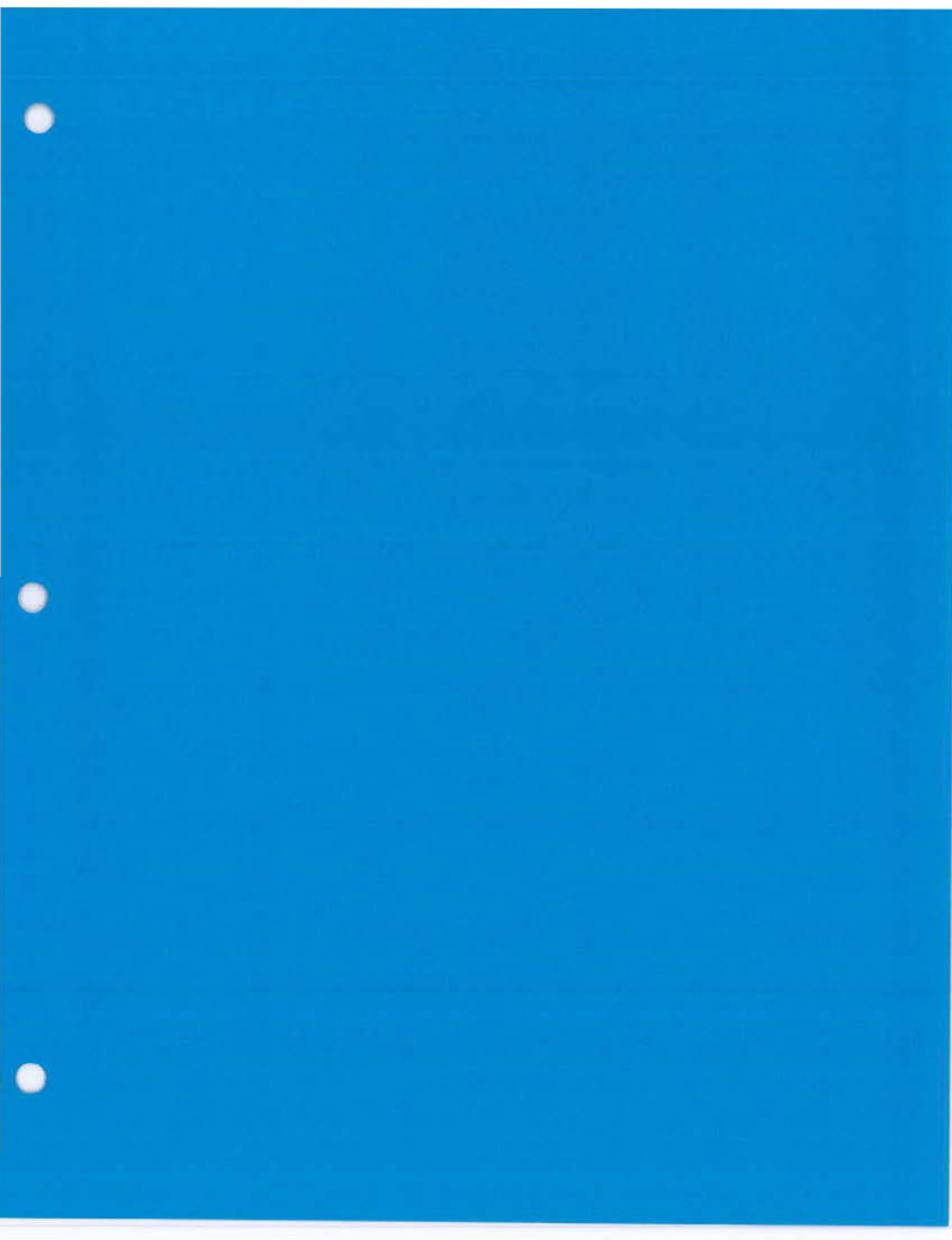
Honorable Judith Zaffirini, State Senator, District 21

Honorable Richard Raymond, State Representative, District 42
Honorable Tracy O. King, State Representative, District 80



Nathan R. Bratton
MPO Director

Heberto L. "Beto" Ramirez
Acting City Secretary



Laredo Urban Transportation Study

Metropolitan Planning Organization Policy Committee
City of Laredo Council Chambers
1110 Houston St. -Laredo, Texas



MINUTES OF THE JUNE 20, 2016, MEETING

I. CHAIRPERSON TO CALL MEETING TO ORDER

Mayor Pete Saenz called the meeting to order at 12:02 p.m.

II. CHAIRPERSON TO CALL ROLL

Nathan R. Bratton, MPO Director, called roll and verified that a quorum existed.

Judge Tijerina made a motion to excuse members not present.

Second: Cm. Altgelt
In Favor: 7
Opposed: 0
Abstained: 0

Motion carried unanimously

Regular members present:

Honorable Pete Saenz, Mayor and LUTS Chairperson
Honorable Tano E. Tijerina, Webb County Judge
Honorable George Altgelt, City Councilmember, District VII
Honorable Roberto Balli, City Councilmember, District VIII
Honorable Charlie San Miguel, City Councilmember, District VI (arrived at 12:13 p.m.)
Honorable Jaime Canales, Webb County Commissioner, Pct. 3
Pete Alvarez, TxDOT
Melisa Montemayor, TxDOT

Regular members absent:

Honorable John Galo, Webb County Commissioner, Pct. 3

Ex-Officio Members Not Present:

Honorable Richard Raymond, State Representative, District 42
Honorable Judith Zaffirini, State Senator, District 21
Honorable Tracy O. King, State Representative, District 80

Staff (Of Participating LUTS Agencies) Present:

City: Nathan R. Bratton, City Planning/LUTS Staff
Vanessa Guerra, City Planning/LUTS Staff
Angie Quijano, City Planning/LUTS Staff

State: Albert Ramirez, TxDOT
Ana Duncan, TxDOT
Sara Garza, TxDOT

Others: Antonio Rodriguez, Howard, Needles, Tammen, & Bergendoff
(HNTB, Inc.)
Ruben Soto, Regional Mobility Authority (RMA)
Mike Graham, TxDOT
Anthony Garza, Dannenbaum Engineering
Louie Jones, Dannenbaum Engineering
Claudia San Miguel, Transit, El Metro

III. COMMITTEE AND DIRECTOR'S REPORTS

Neither the Committee nor the Director had any new business to report.

IV. CITIZEN COMMENT

Speakers are required to fill out a witness card and submit it to the MPO staff no later than 15 minutes after the start of the meeting. The speaker shall identify themselves at the microphone. Comments are limited to three (3) minutes per speaker. No more than three (3) persons will be allowed to speak on any side of an issue. Should there be more than three (3) people who wish to speak on a particular issue, they need to select not more than three (3) representatives to speak for them and the presiding officer may limit the public comments further in the interest of an orderly meeting. Speakers may not pass their minutes to any other speaker. Comments should be relevant to City business and delivered in a professional manner. No derogatory remarks will be permitted.

V. ITEMS REQUIRING POLICY COMMITTEE ACTION

A. Approval of the minutes for the meeting held on May 16, 2016 and the special meeting held on May 27, 2016.

Cm. Altgelt made a motion to **approve** the minutes of the meeting held on May 16, 2016 and the special meeting held on May 27, 2016.

Second: Cm. Altgelt
In Favor: 7

Opposed: 0
Abstained: 0

Motion carried unanimously

B. Receive public testimony and approve Resolution No. MPO 2016-07, adopting the proposed 2017-2020 Transportation Improvement Plan (TIP).

Vanessa Guerra, MPO Coordinator, gave a brief presentation on the proposed TIP. She stated the resolution authorized final approval of the 2017-2020 TIP. She further stated the projects programmed for the next four years are the Flecha/Las Cruces Realignment Project, Calton Grade Separation Project, Zacate Creek Hike and Bike Trail Project, and the Hachar Road Project. The proposed document programmed 12 transit projects including funding of approximately 60 million dollars.

Cm. Balli made a motion to open a public hearing.

Second: Cm. Altgelt
In Favor: 7
Opposed: 0
Abstained: 0

Motion carried unanimously

There was no public comment.

Cm. Balli made a motion to close the public hearing and approve Resolution No. MPO 2016-07, adopting the proposed 2017-2020 TIP.

Second: Cm. Altgelt
In Favor: 7
Opposed: 0
Abstained: 0

Motion carried unanimously

C. Receive public testimony and approve a motion initiating a twenty-day public review and comment period for the proposed draft of the 2017 Unified Planning Work Program (UPWP).

Judge Tijerina made a motion to open a public hearing.

Second: Cm. Balli
In Favor: 7
Opposed: 0
Abstained: 0

Motion carried unanimously

There was no public comment.

Mr. Bratton stated the UPWP describes and schedules work to be determined by the MPO during the 2017 fiscal year.

Judge Tijerina made a motion to **close** the public hearing and **initiate** a 20 day public review and comment period for the proposed FY 2017 UPWP.

Second:	Cm. Balli
In Favor:	7
Opposed:	0
Abstained:	0

Motion carried unanimously

D. Receive public testimony and approve a motion to accept the ranking of firms that submitted proposals in response to the Request for Qualifications (RFQ) issued for the development of the 2013-2045 Travel Demand Model Update Project; approve the selection of a professional services provider, and authorize Staff to enter into negotiations.

Judge Tijerina made a motion to **open** a public hearing.

Second:	Cm. Balli
In Favor:	7
Opposed:	0
Abstained:	0

Motion carried unanimously

Ms. Guerra stated MPO Staff issued an RFQ for the 2013-2045 Travel Demand Model Update. She stated the objective of the project is to collect and format all demographic necessary for input into the 2013-2045 Travel Demand Model. She stated a selection committee ranked the firms that submitted RFQ proposals. The preferred firm was CDM Smith.

There was no public comment.

Cm. Balli made a motion to **close** the public hearing and **accept** the selection committee's ranking of the firms that submitted proposals in response to the Request for Qualifications (RFQ) issued for the development of the 2013-2045 Travel Demand Model Update Project; **select** CDM Smith; and authorize Staff to enter into negotiations.

Second: Cm. Altgelt
In Favor: 7
Opposed: 0
Abstained: 0

Motion carried unanimously

E. Authorizing the execution of Amendment 1 to the contract with CDM Smith for the development of the Transit Plan Update in order to extend the contract completion date to February 28, 2017.

Ms. Guerra stated the amendment would extend the contract completion date by 5 months to February 28, 2017. The extension will provide additional necessary review and approval time. No added funding would be allocated to this project.

Cm. Balli made a motion to **approve** the execution of Amendment 1 to the contract with CDM Smith for the development of the Transit Plan Update in order to extend the contract completion date to February 28, 2017.

Second: Judge Tijerina
In Favor: 7
Opposed: 0
Abstained: 0

Motion carried unanimously

Cm. San Miguel arrived at the meeting at 12:13p.m.

F. Discussion with possible action on ratification of support letter of the Border Area Nutrition Council's proposal to Transit, El Metro.

Mr. Bratton stated the requested letter is to support the Border Area Nutrition Council's proposal to Transit, El Metro.

Cm. Canales made a motion to **approve** the support letter of the Border Area Nutrition Council's proposal to Transit, El Metro.

Second: Cm. Balli
In Favor: 8
Opposed: 0
Abstained: 0
Motion carried unanimously

G. Discussion with possible action on Hachar-Reuthinger Road Project.

1. Status report by Dannenbaum Engineering on the alignment of Hachar Road.

Anthony Garza, Dannenbaum Engineering, gave a brief presentation on the item. He stated Dannenbaum Staff was moving forward as expeditiously as possible, such that the development of the schematic for Hachar was at 60 percent and the environmental document preparation was well underway. The execution of the Advance Funding Agreement (AFA) was also in process pending TxDOT's final review.

Melisa Montemayor, TxDOT, stated the AFA was anticipated to be fully ready for execution within the next three weeks.

Judge Tijerina made a motion to **combine** discussion of agenda items G, H, and I.

Second: Cm. Balli
In Favor: 8
Opposed: 0
Abstained: 0

Motion carried unanimously

Judge Tijerina made a motion to **open** public hearing for items H and I.

Second: Cm. San Miguel
In Favor: 8
Opposed: 0
Abstained: 0

Motion carried unanimously

2. Discussion and possible action on the City of Laredo's request for funding of the Hachar-Reuthinger Road Project.

- a. Addition of project intended to provide funds for PS&E (including right-of-way mapping) for the Hachar-Reuthinger Road Project from FM 1472 to I-35 (CSJ 0922-33-165 & 0922-33-166). \$1,634,277 in Category 7 Funds with a proposed.**
- b. Revision of project CSJ 0922-33-165 intended to provide funds for Construction Engineering, Contingencies, and Construction of the Hachar-Reuthinger Road Project from FM 1472 to Beltway parkway. \$26,796,902 in Category 7 Funds.**
- c. Revision of project CSJ 0922-33-166 intended to provide funds for Construction Engineering, Contingencies, and Construction of the Hachar-Reuthinger Road Project from Beltway parkway to I-35. \$21,440,668 in Category 7 Funds.**

H. Receive public testimony and initiate a 10 day public review and comment period for the proposed revision(s) of the 2015-2040 Laredo Metropolitan Transportation Plan (MTP):

- a. **Addition of project intended to provide funds for PS&E (including right-of-way mapping) for the Hachar-Reuthinger Road Project from FM 1472 to I-35 (CSJ 0922-33-165 & 0922-33-166). \$1,634,277 in Category 7 Funds.**
- b. **Revision of project CSJ 0922-33-165 intended to provide funds for Construction Engineering, Contingencies, and Construction of the Hachar-Reuthinger Road Project from FM 1472 to Beltway parkway. \$26,796,902 in Category 7 Funds.**
- c. **Revision of project CSJ 0922-33-166 intended to provide funds for Construction Engineering, Contingencies, and Construction of the Hachar-Reuthinger Road Project from Beltway parkway to I-35. \$21,440,668 in Category 7 Funds.**

I. Receive public testimony and initiate a ten-day public review and comment period for the following proposed amendment(s) of the 2017-2020 Transportation improvement Program.

(TIP):

- a. **Addition of project intended to provide funds for PS&E (including right-of-way mapping) for the Hachar-Reuthinger Road Project from FM 1472 to I-35 (CSJ 0922-33-165 & 0922-33-166). \$1,634,277 in Category 7 Funds.**
- b. **Revision of project CSJ 0922-33-165 intended to provide funds for Construction Engineering, Contingencies, and Construction of the Hachar-Reuthinger Road Project from FM 1472 to Beltway parkway. \$26,796,902 in Category 7 Funds.**

Cm. Canales requested the MPO Director review the timeline for the allocation of Category 7 funds and associated projects as proposed in the agenda item.

The MPO Director stated the development of Plans, Specifications, and Estimates (PS&E) for both segments would begin in February of 2017. The construction of the portion of Hachar Roadway from FM 1472 to Beltway Parkway would commence in 2019 or thereabouts; and the Roadway section of Hachar known as the Reuthinger segment would begin construction in 2022.

The meeting recessed at 12:25 p.m. due to a power failure.

The meeting reconvened at 4:05 p.m., June 20th, 2016 (the same day).

Regular members present:

Honorable Pete Saenz, Mayor and LUTS Chairperson
 Honorable John Galo, Webb County Commissioner, Pct. 3
 Honorable George Altgelt, City Councilmember, District VII
 Honorable Roberto Balli, City Councilmember, District VIII

Honorable Charlie San Miguel, City Councilmember, District VI
Honorable Jaime Canales, Webb County Commissioner, Pct. 3
Pete Alvarez, TxDOT
Melisa Montemayor, TxDOT

Regular members absent:

Honorable Tano E. Tijerina, Webb County Judge

Staff (Of Participating LUTS Agencies) Present:

City: Nathan R. Bratton, City Planning/LUTS Staff
Vanessa Guerra, City Planning/LUTS Staff
Angie Quijano, City Planning/LUTS Staff

State: Albert Ramirez, TxDOT
Ana Duncan, TxDOT
Sara Garza, TxDOT

Others: Antonio Rodriguez, Howard, Needles, Tammen, & Bergendoff
(HNTB, Inc.)
Ruben Soto, Regional Mobility Authority (RMA)
Mike Graham, TxDOT
Anthony Garza, Dannenbaum Engineering
Louie Jones, Dannenbaum Engineering
Claudia San Miguel, Transit, El Metro

G. Discussion with possible action on Hachar-Reuthinger Road Project.

- 1. Status report by Dannenbaum Engineering on the alignment of Hachar Road.**

H. Receive public testimony and initiate a 10 day public review and comment period for the proposed revision(s) of the 2015-2040 Laredo Metropolitan Transportation Plan (MTP):

- a. Addition of project intended to provide funds for PS&E (including right-of-way mapping) for the Hachar-Reuthinger Road Project from FM 1472 to I-35 (CSJ 0922-33-165 & 0922-33-166). \$1,634,277 in Category 7 Funds.**
- b. Revision of project CSJ 0922-33-165 intended to provide funds for Construction Engineering, Contingencies, and Construction of the Hachar-Reuthinger Road Project from FM 1472 to Beltway parkway. \$26,796,902 in Category 7 Funds.**
- c. Revision of project CSJ 0922-33-166 intended to provide funds for Construction Engineering, Contingencies, and Construction of the**

**Hachar-Reuthinger Road Project from Beltway parkway to I-35.
\$21,440,668 in Category 7 Funds.**

I. Receive public testimony and initiate a ten-day public review and comment period for the following proposed amendment(s) of the 2017-2020 Transportation improvement Program.

(TIP):

- a. Addition of project intended to provide funds for PS&E (including right-of-way mapping) for the Hachar-Reuthinger Road Project from FM 1472 to I-35 (CSJ 0922-33-165 & 0922-33-166). \$1,634,277 in Category 7 Funds.**
- b. Revision of project CSJ 0922-33-165 intended to provide funds for Construction Engineering, Contingencies, and Construction of the Hachar-Reuthinger Road Project from FM 1472 to Beltway parkway. \$26,796,902 in Category 7 Funds.**

Cm. Altgelt made a motion to close the public hearing, initiate a ten day public review and comment period for both the proposed revisions of the 2015-2040 MTP and the 2017-2020 TIP; and designate and commit 100% of Category 7 funds to the Hachar-Reuthinger Project as described in agenda items G, H, and I.

Second: Cm. Canales
In Favor: 8
Opposed: 0
Abstained: 0

Motion carried unanimously

J. Discussion with possible action on Mines Road.

I. Update on status of implementation of recommendations resulting from Phase 1 and 2 of the Mines Road Study.

Roberto Murillo, Traffic Safety Department Director, stated the approved resolution authorizing the execution of the AFA on the Mines Road Synchronization Project, was proposed for revision due to concerns expressed by TxDOT regarding certain financial language included in the previous resolution. He also stated that improvements implemented on Mines Road have already diminished congestion. He further stated his department was working on signal timing improvements on Mines Road, US 59 and US 83.

Albert Ramirez, TxDOT, stated that in August 2016 TxDOT would let/initiate the procurement of professional construction services for the widening of FM 1472 from Killam to 0.3 miles north of Muller.

K. Discussion and possible action to delay CSJ-0086-14-065 (Loop 20 main lanes over I-35) and re-appropriate CBI funds to other Loop 20 projects.

Cm. Canales expressed his concerns regarding the proposed delay of the project.

Ruben Soto, RMA, explained the funds currently allocated to the project would be temporarily committed to a funding request proposal to be submitted to the Texas Transportation Commission. The funding request would include funding for all improvements on Loop 20 necessary to upgrade the corridor to interstate standards.

Cm. Canales reiterated his concerns regarding the delay of the main lanes project.

Pete Alvarez, TxDOT District Engineer, stated that TxDOT planned to submit a Fast Lane Grant application for the Loop 20 main lanes over IH 35, and a direct connector west bound to south IH 35. He stated the total cost of those two projects would be approximately \$60 million dollars. The Commission is anticipated to come to a decision in late August or possibly September of 2016.

Cm. Galo made a motion to **delay** the project to a December 2016 letting subject to whether or not TxDOT was awarded the Fast Lane Grant funds, and authorize Staff to submit the necessary TIP revisions accordingly.

Second:	Cm. San Miguel
In Favor:	8
Opposed:	0
Abstained:	0

Motion carried unanimously.

No discussion or action was taken on the remaining agenda items due to meeting time constraints.

VI. REPORT(S) AND PRESENTATIONS (No action required)

A. Presentation by El Metro on the current status of fleet replacement and capital funding.

B. Status report on the Regional Mobility Authority (RMA).

- 1. Report on Feasibility Study of a possible Transportation Reinvestment Zone (TRZ) on Vallecillo Road.**
- 2. Status of the RMA's FASTLANE Grant.**
- 3. Status of the Loop 20 project.**

C. Status report by TxDOT on public and private acreage Right-of-Way on the US 59/ Loop 20 Project.

D. Status report by TxDOT on the Fast Lane Grant application submitted for the Main Lanes on Loop 20 over IH 35.

VII. ADJOURNMENT

Cm. Balli made a motion to **adjourn** the meeting at 5:18 p.m.

Second: Cm. Altgelt
In Favor: 8
Opposed: 0
Abstained: 0

Motion carried unanimously.

Prepared by:  Reviewed by: _____
Angie Quijano, MPO Staff Vanessa Guerra, MPO Coordinator

Reviewed by: _____
Nathan R. Bratton, MPO Director Melisa Montemayor, District Administrator

Pete Saenz,
Mayor and LUTS Chairperson



**LAREDO URBAN TRANSPORTATION STUDY
ACTION ITEM**

DATE: 7-18-16	SUBJECT: A RESOLUTION Receive public testimony and approve Resolution No. MPO 2016-08, adopting the proposed FY 2017 Unified Planning Work Program (UPWP).																									
INITIATED BY: Staff	STAFF SOURCE: Nathan Bratton, MPO Director																									
PREVIOUS ACTION: On June 20 th , 2016, the Policy Committee approved a motion initiating a 20 day public review and comment period.																										
<p>BACKGROUND: The Unified Planning Work Program describes and schedules work to be undertaken by the Metropolitan Planning Organization during the 2017 fiscal period.</p> <p>The final approved Unified Planning Work Program (UPWP) is due August 3, 2016. Listed below is the proposed budget:</p> <table style="margin-left: auto; margin-right: auto; border-collapse: collapse;"> <thead> <tr> <th style="text-align: left; padding: 5px;">Subtask</th> <th style="text-align: right; padding: 5px;">Amount</th> </tr> </thead> <tbody> <tr><td style="padding: 2px 5px;">1.1 Program support administration</td><td style="text-align: right; padding: 2px 5px;">\$100,000.00</td></tr> <tr><td style="padding: 2px 5px;">1.2 Travel, training, equipment</td><td style="text-align: right; padding: 2px 5px;">\$20,000.00</td></tr> <tr><td style="padding: 2px 5px;">2.1 Growth monitoring, projections, website</td><td style="text-align: right; padding: 2px 5px;">\$20,000.00</td></tr> <tr><td style="padding: 2px 5px;">2.2 2013-2045 Travel Demand Model Update Proj.</td><td style="text-align: right; padding: 2px 5px;">\$100,000.00</td></tr> <tr><td style="padding: 2px 5px;">3.1 TIP/UPWP/PPP/LEP/By-Laws/Title VI</td><td style="text-align: right; padding: 2px 5px;">\$20,000.00</td></tr> <tr><td style="padding: 2px 5px;">4.1 2015-2040 Metropolitan Transportation Plan</td><td style="text-align: right; padding: 2px 5px;">\$5,000.00</td></tr> <tr><td style="padding: 2px 5px;">5.1 Transit Plan Update</td><td style="text-align: right; padding: 2px 5px;">\$40,000.00</td></tr> <tr><td style="padding: 2px 5px;">5.2 Outer Loop Alignment Study</td><td style="text-align: right; padding: 2px 5px;">\$250,000.00</td></tr> <tr><td style="padding: 2px 5px;">5.3 Freight Mobility Plan</td><td style="text-align: right; padding: 2px 5px;">\$250,000.00</td></tr> <tr><td style="padding: 2px 5px;">5.4 Bicycle and Pedestrian Plan</td><td style="text-align: right; padding: 2px 5px;">\$5,000.00</td></tr> <tr> <td style="text-align: center; padding: 5px;">TOTAL</td> <td style="text-align: right; padding: 5px;">\$810,000.00</td> </tr> </tbody> </table>			Subtask	Amount	1.1 Program support administration	\$100,000.00	1.2 Travel, training, equipment	\$20,000.00	2.1 Growth monitoring, projections, website	\$20,000.00	2.2 2013-2045 Travel Demand Model Update Proj.	\$100,000.00	3.1 TIP/UPWP/PPP/LEP/By-Laws/Title VI	\$20,000.00	4.1 2015-2040 Metropolitan Transportation Plan	\$5,000.00	5.1 Transit Plan Update	\$40,000.00	5.2 Outer Loop Alignment Study	\$250,000.00	5.3 Freight Mobility Plan	\$250,000.00	5.4 Bicycle and Pedestrian Plan	\$5,000.00	TOTAL	\$810,000.00
Subtask	Amount																									
1.1 Program support administration	\$100,000.00																									
1.2 Travel, training, equipment	\$20,000.00																									
2.1 Growth monitoring, projections, website	\$20,000.00																									
2.2 2013-2045 Travel Demand Model Update Proj.	\$100,000.00																									
3.1 TIP/UPWP/PPP/LEP/By-Laws/Title VI	\$20,000.00																									
4.1 2015-2040 Metropolitan Transportation Plan	\$5,000.00																									
5.1 Transit Plan Update	\$40,000.00																									
5.2 Outer Loop Alignment Study	\$250,000.00																									
5.3 Freight Mobility Plan	\$250,000.00																									
5.4 Bicycle and Pedestrian Plan	\$5,000.00																									
TOTAL	\$810,000.00																									
COMMITTEE RECOMMENDATION: The LUTS Technical Committee recommends approval.	STAFF RECOMMENDATION: Staff recommends approval.																									

**LAREDO URBAN TRANSPORTATION STUDY
ACTION ITEM**

	Public Comment	Action Taken
1	“Please include language below in the UPWP from the FAST ACT” – Sara Garza, TxDOT	Updated scope of planning language was included as requested.
2	Appendix A – Remove Albert Ramirez and add Pete Alvarez, the District Engineer, and remove Roque Vela and add George Altgelt. – Sara Garza, TxDOT	Policy Board Committee Members table was updated as requested.
3	Page 12 - Where you show Table 1- Budget Summary –FY 17, that should read Laredo Urban Transportation Study – FY 2017 – Sara Garza, TxDOT	The table heading was revised as requested
4	<p>Please include the following language:</p> <p>Task 2.0 Data Development and Maintenance</p> <p>TXDOT Data Collection – To conduct travel surveys and/or traffic saturation counts in the MPO region for use in the travel demand models and transportation analysis for pavement and geometric design. Work is being conducted by TXDOT and funding is being provided through the Texas State Planning and Research (SPR) Work Program Part I. Funds will be reconciled as part of the SPR Part I. (\$XXX,XXX SPR) - Sara Garza, Peggy Thurin - TxDOT</p>	The language was included as requested.

RESOLUTION NO. MPO 2016-08

BY THE LAREDO URBAN TRANSPORTATION STUDY
METROPOLITAN PLANNING ORGANIZATION POLICY COMMITTEE

ADOPTING THE 2017 UNIFIED PLANNING WORK PROGRAM (UPWP)

WHEREAS, the Laredo Urban Transportation Study (LUTS), the designated Metropolitan Planning Organization (MPO), for the Laredo Urbanized Area wishes to adopt the 2017 Unified Planning Work Program (UPWP); and,

WHEREAS, the Laredo Urban Transportation Study finds that the 2017 Unified Planning Work Program (UPWP) meets federal and state requirements, and meets the transportation planning needs of the Laredo Metropolitan Area;

NOW THEREFORE BE IT RESOLVED, that the Laredo Urban Transportation Study, as the designated Metropolitan Planning Organization for the Laredo Urban Area, adopts the 2017 Unified Planning Work Program (UPWP), which is attached hereto and made a part hereof for all purpose on this the 18th day of July, 2016

Honorable Pete Saenz
Mayor of Laredo and Chairperson of the
LUTS Transportation Planning Committee

We certify that the above resolution was adopted at a public meeting of the Policy Committee of the Laredo Urban Transportation Study.

Nathan Bratton
MPO Director

Melisa Montemayor
TxDOT District Administrator



UNIFIED PLANNING WORK PROGRAM FY 2017

ADOPTED BY THE POLICY COMMITTEE ON: JULY 18, 2016
AMENDED ON:

**LAREDO URBAN TRANSPORTATION STUDY
2017 UNIFIED PLANNING WORK PROGRAM**

I. INTRODUCTION

The Unified Planning Work Program (UPWP) originated from the Federal-Aid Highway Act of 1973 and details the transportation planning work proposed to be undertaken by the Metropolitan Planning Organization in the study area for the year. The United States Department of Transportation, through its modal administrations, requires development of an annual Unified Planning Work Program (UPWP) to describe intermodal comprehensive transportation planning in areas with populations greater than 50,000. This program was designed to incorporate federal Section 112 (“PL” funds) and Section 5303 (transit) planning funds and intended to provide a mechanism for the coordination of all planning activities required by the joint planning regulations of the Federal Highway Administration (FHWA) and the Federal Transit Administration (FTA). Federal regulations allow for a one or two year work program.

The Laredo Urban Transportation Study, in its capacity as the Laredo Metropolitan Planning Organization, provides “3C” or “continuous, cooperative and comprehensive” transportation planning for the Laredo Metropolitan Area as required by the Intermodal Surface Transportation Efficiency Act of 1991 (ISTEA), and all subsequent reauthorization acts including: The Transportation Equity Act for the 21st Century, The Safe, Accountable, Flexible, and Efficient Transportation Act: A Legacy for Users (SAFETEA-LU), Moving Ahead for Progress in the 21st Century Act (MAP-21) and Fixing America’s Surface Transportation (FAST) Act.

The Clean Air Act Amendments (CAAA) of 1990 also influences the metropolitan planning process. In general the Act requires that transportation actions and projects proposed and/or implemented in the metropolitan planning area must support the attainment of federal standards for ozone by meeting specific requirements set out by the Environmental Protection Agency (EPA), regarding air quality conformity. Since the Laredo Urbanized Area has been designated an “attainment” area for air quality conformity, the law exempts the urbanized area (UZA) from conformity requirements therefore; it is not addressed in this document.

The Unified Planning Work Program (UPWP) is developed to comply with the mandatory metropolitan planning requirements and was adopted by the Laredo Metropolitan Planning Organization Policy Committee at a public meeting, following a twenty-day comment period as required by the adopted Public Participation Plan.

A. PURPOSE

The UPWP describes and schedules the work to be undertaken by the Laredo Urban Transportation Study during the upcoming fiscal period, and includes a financial participation summary.

Scope of Planning

In general the FAST Act requires that the metropolitan planning process for a metropolitan area shall provide for consideration of projects and strategies that will:

1. Support the economic vitality of the metropolitan area, especially by enabling global competitiveness, productivity, and efficiency.

2. Increase the safety of the transportation system for motorized and non-motorized users.
3. Increase the security of the transportation system for motorized and non-motorized users.
4. Increase the accessibility and mobility for people and freight.
5. Protect and enhance the environment, promote energy conservation, improve the quality of life, and promote consistency between transportation improvements and State and local planned growth and economic development patterns.
6. Enhance the integration and connectivity of the transportation system, across and between modes, people and freight.
7. Promote efficient system management and operation.
8. Emphasize the preservation of the existing transportation system.
9. Improve the resiliency and reliability of the transportation system and reduce or mitigate storm water impacts of surface transportation; and,
10. Enhance travel and tourism.

Performance Based Planning

MAP-21 and its successor the FAST Act require that metropolitan planning organizations, public transportation providers and state departments of transportation establish and use a performance-based approach to transportation decision making to support the seven national goals. The **seven federal goal areas** as listed in 23 USC 150 are as follows:

1. *Safety*: To achieve a significant reduction in traffic fatalities and serious injuries on all public roads.
2. *Infrastructure condition*: To maintain the highway infrastructure asset system in a state of good repair.
3. *Congestion reduction*: To achieve a significant reduction in congestion on the National Highway System.
4. *System reliability*: To improve the efficiency of the surface transportation system.
5. *Freight movement and economic vitality*: To improve the national freight network, strengthen the ability of rural communities to access national and international trade markets, and support regional economic development.
6. *Environmental sustainability*: To enhance the performance of the transportation system while protecting and enhancing the natural environment.
7. *Reduced project delivery delays*: To reduce project costs, promote jobs and the economy, and expedite the movement of people and goods by accelerating project completion through eliminating delays in the project development and delivery process, including reducing regulatory burdens and improving agencies' work practices.

The goal areas for public transportation address:

1. *Transit Safety*
2. *Transit Asset Management*

The United States Department of Transportation (USDOT) will establish MAP 21 Performance Measures designed to carry out the National Highway Performance Program. Each State Department of Transportation (DOT) will then establish performance targets in support of those measures. Subsequent to the State adopting its performance targets the MPO's will have 180 days to establish performance targets coordinated with those of the state DOT's and public transportation providers. When these targets are set, the Metropolitan Transportation Plan

(MTP) and the Transportation Improvement Program (TIP) are required to include a description of the performance measures and targets used in assessing the performance of the transportation system. The Metropolitan Transportation Plan will also have to include a system performance report evaluating the condition and performance of the transportation system with respect to the established targets. The TIP is also required to include a description of the anticipated effect of the TIP toward achieving the performance targets set in the plan.

The MPO intends to develop performance targets as required by the FAST Act in coordination with the State, the local transit provider (El Metro), and all other planning partners. Public involvement will be critical to the preparation and implementation of performance measures in the planning process as required by the FAST Act. Performance measures allow the MPO to track improvements towards the accomplishment of important outcomes for the region.

Public Involvement

The Laredo MPO's Public Participation Plan (PPP) gives citizens the opportunity to comment during all phases of the transportation planning process. The MPO welcomes public comment throughout the planning process and utilizes its website <http://www.ci.laredo.tx.us/city-planning/Departments/MPO/index.html>, the City of Laredo's website <http://www.cityoflaredo.com/>, and local periodicals including, the Laredo Morning Times and El Manana, to notify the public of meetings and opportunities to comment.

In order to ensure public involvement, all MPO work is conducted in accordance with the adopted Public Participation Plan (PPP). The PPP requires that initial adoption of the Unified Planning Work Program (UPWP) follow at a minimum: a 20 day public comment and review period, 72 hour advanced posting of the Policy Committee meeting wherein final action will occur, and publication of a document summary in the newspaper at least 5 days in advance of adoption. The PPP further requires that revisions of the UPWP may only be accomplished through action of the Policy Committee, following 72 hour posted advance notice to the public.

B. DEFINITION OF AREA

The Laredo Metropolitan Area Boundary (MAB) includes the City of Laredo and portions of Webb County. (See Map, Appendix B.) The MAB was approved by the Governor in 2004. The Laredo urbanized area (as determined by the 2010 Census) surpassed 200,000 in population and was designated a Transportation Management Area (TMA) effective July 18th, 2012.

C. ORGANIZATION

The Laredo Metropolitan Planning Organization is governed by the Policy Committee established in accordance with adopted MPO Bylaws. The Policy Committee is the MPO body that holds review and decision-making authority over transportation planning efforts undertaken by the Laredo Urban Transportation Study, acting as the Metropolitan Planning Organization, and by the Texas Department of Transportation in the Laredo Metropolitan Area (See Appendix A). The Committee is chaired by the Mayor of the City of Laredo and includes as voting members: three members from the City of Laredo City Council (including two members representing the City of Laredo, and one Councilman representing the Laredo Mass Transit Board), the Laredo TxDOT District Administrator, the Laredo TxDOT District Engineer, the Webb County Judge, and two Webb County Commissioners. The State Senator for District 21,

FY 2017 UPWP

the State Representative for District 80 and the State Representative for District 42 serve as non-voting, ex-officio members. The MPO Technical Committee responsibilities include professional and technical review of work programs, policy recommendations and transportation planning activities. The Technical Committee includes:

<p><u>City Representatives:</u></p> <ul style="list-style-type: none"> • Laredo City Planner (Chairperson) • The General Manager of the City Transit System • Laredo Manager of Traffic Safety • Laredo Airport Manager • Laredo City Engineer • Laredo Bridge Manager 	<p><u>State Representatives:</u></p> <ul style="list-style-type: none"> • TxDOT Planning Representative (Vice-Chairperson) • TxDOT Planning Representative • TxDOT Area Engineer • TxDOT Transportation Planning and Programming Field Representative
<p><u>Federal representatives:</u></p> <ul style="list-style-type: none"> • FHWA Planning Representative (Austin) 	<p><u>School system representatives</u></p> <ul style="list-style-type: none"> • A representative of the Laredo Independent School District • A representative of the United Independent School District • A representative of Texas A&M International University • A representative of Laredo Community College
<p><u>County and Regional Representatives:</u></p> <ul style="list-style-type: none"> • Webb County Planning Director • South Texas Development Council Regional Planning Director • The General Manager of the Rural Transit System • Webb County Engineer 	<p><u>Private Sector Representatives:</u></p> <ul style="list-style-type: none"> • A representative of the Kansas City Southern Railway Company • A representative of the Union Pacific Railroad Company • A representative of the Laredo Transportation Association • A Transportation Provider Representative who shall also serve on the Laredo Transportation Advisory Committee

The Title VI/EJ Working Group is comprised of 9 members, including representatives of the City of Laredo, the MPO, TxDOT, transit and the County Planning Department. The Group’s purpose is to assist the MPO in improving data collection, monitoring and analysis to ensure that transportation related programs and policies do not have a disproportionately high and adverse human health or environmental effects on minority and low-income populations. The City of Laredo staff providing service and support to the MPO include: the Planning Director, a planner, a GIS technician, a clerk, an accountant and others as may be required.

D. PRIVATE SECTOR INVOLVEMENT

The private sector is encouraged to participate in the development of all transportation programs and plans. Private transportation providers are invited to participate in TIP development as members of the Technical Committee and as project evaluation committee members. Private consultants will be used for the completion of the Transit Plan Update, the Travel Demand Model Update Project, the Outer Loop Alignment Study, and the Freight Mobility Plan.

E. PLANNING ISSUES AND EMPHASIS

The current UPWP addresses the following transportation areas of concern in the MPO area:

- Growth, and Development Data and Projections
- Public Transportation Needs

- Alternative modes of transportation

The Federal Highway Administration (FHWA) and Federal Transit Administration (FTA) in a memorandum to Metropolitan Planning Organizations, dated March 18, 2015, jointly issued Planning and Emphasis Areas (PEAs). The PEAs are topical areas in planning that FHWA and FTA want to emphasize as MPOs develop work tasks associated with PEAs in the UPWP. The PEAs include:

1. **MAP-21 Implementation - Transition to Performance Based Planning and Programming.** Performance based planning and programming includes using transportation performance measures, setting targets, reporting performance, and programming transportation investments directed toward the achievement of transportation system performance outcomes. Appropriate UPWP work tasks include working with local planning partners to identify ways to implement performance-based planning provisions such as collecting performance data, selecting and reporting performance targets for metropolitan areas, and reporting actual system performance related to those targets. The Laredo MPO uses scenario planning through the Travel Demand Model process to develop the Laredo Metropolitan Transportation Plan.
2. **Regional Models of Cooperation- Ensure a Regional Approach to Transportation Planning by Promoting Cooperation and Coordination across Transit Agency, MPO, and State Boundaries-** The Laredo MPO will continue to work with its planning partners to improve the effectiveness of transportation decision-making by thinking beyond traditional borders and adopting a coordinated approach to transportation planning. A coordinated approach supports common goals and capitalizes on opportunities related to project delivery, congestion management, safety, freight, livability, and commerce across boundaries. Improved multi-jurisdictional coordination between the Laredo MPO, TxDOT, El Metro, area providers of public transportation, and the Regional Mobility Authority (RMA) can reduce project delivery times and enhance the efficient use of resources. The Laredo MPO will periodically revisit its metropolitan area planning agreements to ensure that there are effective processes for cross-jurisdictional communication between TxDOT, the Laredo MPO and local area transit providers to improve collaboration, policy implementation, technology use, and performance management.
3. **Ladders of Opportunity: Access to essential services** – The Laredo MPO will continue to work with TxDOT, and the local area transit providers, as part of the transportation planning process to identify transportation connectivity gaps in accessing essential services. Essential services include employment, health care, school/education, and recreation. At the behest of the local transit provider, the Laredo MPO UPWP routinely includes the development of transit related studies, including the development of: a five year plan, a bus/rapid transit feasibility study, and a paratransit and Americans with Disability Act compliance study. The Laredo MPO will also periodically evaluate the effectiveness of its public participation plan for engaging transportation-disadvantaged communities in the transportation decision making process. The Laredo MPO will evaluate the need and availability of pedestrian and bicycle facilities in the study area.

II. TASK 1.0 - ADMINISTRATION AND MANAGEMENT

A. OBJECTIVE

To ensure that the Laredo Metropolitan Area transportation planning process is a fully cooperative, comprehensive and continuing activity; to monitor ongoing planning activities; to ensure that all modes of transportation are given consideration as elements of a single urban transportation system and are considered in the overall planning process; to ensure public involvement in the transportation planning process.

B. EXPECTED PRODUCTS

The smooth and efficient operation of the Metropolitan Planning Organization including the following: fulfillment of planning objectives; compliance with state and federal requirements; continuation of a proactive public involvement process, reports, certifications, and administration.

C. PREVIOUS WORK

Both the Technical and Policy Committee meetings held on an ongoing basis to make appropriate revisions to documents and approve programs. Staff conducted public meetings as required by FHWA, FTA, the State and local government in the development of transportation planning documents, and reports. Staff attended various meetings, and workshops, and made presentations at public meetings.

D. SUBTASKS

- 1.1 Program support administration. This includes program administration, record keeping, and monitoring completion of UPWP projects, audit, preparation of reports, interagency coordination, facilitating citizen participation, and preparation of meeting minutes. (Routine work effort – carried over from previous year)
- 1.2 Travel, training, equipment, and supplies. All computer hardware, software and equipment expenditures of Federal planning funds over \$5,000 will require prior approval.

E. FUNDING & PARTICIPATION SUMMARY

Task 1.0 - FY 17

Subtask	Responsible Agency	Transportation Planning Funds (TPF)¹	FTA Sect. 5307	Local	Total
1.1	LUTS	100,000	0	0	100,000
1.2	LUTS	20,000	0	0	20,000
TOTAL		120,000	0	0	120,000

¹ TPF – This includes both FHWA PL-112 and FTA Section 5303 Funds. TxDOT will apply transportation development credits sufficient to provide the match for TPF. As the credits reflect neither cash nor man-hours, they are not reflected in the funding tables.

III. TASK 2.0 - DATA DEVELOPMENT AND MAINTENANCE

A. OBJECTIVE

Maintain the MPO website and a database on population, housing, land use and transportation characteristics. Monitor growth patterns in the study area for their impact on community transportation systems. Staff will assist with the continual integration of data into GIS format in order to facilitate organization, retrieval and analysis, and to continue and further the goals and objectives of comprehensive transportation planning.

B. EXPECTED PRODUCTS

Updated demographics including population, land use, housing employment and roadway databases and maps. A fully integrated mapping/data base system to be used in data retrieval, analysis, projection, mapping, and graphic publication elements of future transportation planning tasks. Demographic data will be developed in-house and with the assistance of outside professionals, using resources available in the community, as well as, the US Census. The MPO website will continue to be modified and updated to increase functionality, ease of use, visualization capacity, public outreach, and transparency.

C. PREVIOUS WORK

The MPO website was continually updated to provide access to meeting agendas, packets, and publications as they became available. The site was also modified to include a section for Title VI information. MPO Staff received and reviewed the files and reports for the Congestion Management Project. The Travel Demand Data Development Project and the 2015-2040 MTP project were completed. Project maps were developed, retrieved and or printed as new projects were approved or considered. A Request for Qualifications was developed, and published for the Demographic Data Development Project (also identified as the 2013-2045 Travel Demand Model Update Project). Consultant selection and project initiation is anticipated by the end of FY 2016.

D. SUBTASKS

- 2.1 Growth development monitoring, projections, and website. The GIS staff will assist in the ongoing collection, review, analysis and mapping of demographic data related to population, land use, housing, and employment. The subtask will also provide for GIS related staff training, and the purchase of equipment, software, materials and supplies for printing of maps. Staff will monitor the MPO website, continue to modify it in the interest of ease of use and transparency, and assist in posting MPO products online. (Routine work effort – carried over from previous year)

TXDOT Data Collection – To conduct travel surveys and/or traffic saturation counts in the MPO region for use in the travel demand models and transportation analysis for pavement and geometric design. Work is being conducted by TXDOT and funding is being provided through the Texas State Planning and Research (SPR) Work Program Part I. Funds will be reconciled as part of the SPR Part I. (\$917,638.31 SPR)

FY 2017 UPWP

2.2 2013-2045 Travel Demand Model Update Project - Objective: To collect and format all the demographic and roadway data necessary for input into the 2013-2045 Travel Demand Model. Expected Outcome: All demographic and roadway data, gathered and formatted, as necessary for submittal to TxDOT for their preparation of the 2013-2015 Travel Demand Model. TxDOT will update the model from a 2008 to a 2013 base year and from a 2040 forecast year to a 2045 forecast year (Non-Routine Work Effort – carry over project).

E. FUNDING & PARTICIPATION SUMMARY

Task 2.0 – FY 17

Subtask	Responsible Agency	Transportation Planning Funds (TPF)¹	FTA Sect. 5307	Local	Total
2.1	LUTS	20,000	0	0	20,000
2.2	LUTS	100,000	0	0	100,000
TOTAL		120,000	0	0	120,000

¹ TPF – This includes both FHWA PL-112 and FTA Section 5303 Funds. TxDOT will apply transportation development credits sufficient to provide the match for TPF. As the credits reflect neither cash nor man-hours, they are not reflected in the funding tables.

IV. TASK 3.0 - SHORT RANGE PLANNING

A. OBJECTIVE

To complete those activities associated with near-term planning and implementation of projects that will be undertaken within the next five years.

B. EXPECTED PRODUCTS

Short range planning activities will result in strategies that will support those planning policies needed to preserve the continuing flow of traffic. The MPO will develop and/or revise as necessary the UPWP, the TIP, the MPO By-Laws, and the Public Participation Plan. The MPO also anticipates continued participation in the regional service planning process, as well as, any activity associated with FTA’s 5310 Senior’s with Disabilities Program or 5339 - Bus and Bus Facilities Program. .

C. PREVIOUS WORK

Staff assisted in the development and continued revision of the 2017-2020 TIP, the 2015- 2018 TIP, the 2016 and 2017 UPWP. In preparation for the federal certification review, Staff worked closely with the selected consultant on the TMA Certification Project, intended to prepare the MPO, its planning partners and organizational documents for both the mock and formal certification review process. The Certification Notebook was prepared and submitted to FHWA in advance of the mock review conducted in December of 2014. The Certification Project conducted with the assistance of a consultant was completed.

FY 2017 UPWP

As a result of the Informal Certification Review, Staff received a number of commendations as well as recommendations for the improvement of the planning process. Staff completed implementation and development of said recommendations. The MPO prepared a supplementary Certification Notebook and participated in the Formal Certification Review conducted by the Federal Highway Administration (FHWA) in April of 2016. Staff developed and submitted the Annual Performance and Expenditure Report and the Annual Projects list. Staff also developed and submitted all materials requested by the TxDOT office of Civil Rights during the Title VI desk audit. In June of 2016, the Office of Civil Rights notified MPO Staff the desk audit was complete and found that the Laredo MPO had demonstrated good faith efforts in meeting the requirements of the Title VI review. Staff developed a Limited English Proficiency Plan which was adopted and implemented in accordance with federal and state guidelines. Staff also developed a Transportation Alternatives Program, issued a call for projects, and selected a project for funding based on adopted project selection procedures.

D. SUBTASKS

- 3.1 TIP/UPWP/By-Laws/PPP/LEP/Title VI– assisting in the development and/or revision of the Transportation Improvement Program (TIP), UPWP, By-Laws, the Public Participation Plan, the Limited English Proficiency Plan, and the Title VI documents.
(Routine work effort- carried over from previous year)

E. FUNDING & PARTICIPATION SUMMARY

Task 3.0 - FY 17

Subtask	Responsible Agency	Transportation Planning Funds (TPF) ¹	FTA Sect. 5307	Local	Total
3.1	LUTS	20,000	0	0	20,000
TOTAL		20,000	0	0	20,000

¹ TPF – This includes both FHWA PL-112 and FTA Section 5303 Funds. TxDOT will apply transportation development credits sufficient to provide the match for TPF. As the credits reflect neither cash nor man-hours, they are not reflected in the funding tables.

V. TASK 4.0 – METROPOLITAN TRANSPORTATION PLAN / LONG RANGE PLANNING

A. OBJECTIVE

To continue study and analysis of projects and data for long-range planning elements and long-range project studies. Includes activities associated with publishing or updating the Metropolitan Transportation Plan, formerly called the Long Range Plan.

B. EXPECTED PRODUCTS

Staff expects to assist in the continual revision of the existing Metropolitan Transportation Plan (MTP) to conform to state and federal requirements.

FY 2017 UPWP

C. PREVIOUS WORK

Staff assisted in the continuous revision of the 2015-2040 Laredo Metropolitan Transportation Plan.

D. SUBTASKS

- 4.1 2015-2040 Laredo Metropolitan Transportation Plan (MTP) - assist in the ongoing revision of Metropolitan Transportation Plan.

E. FUNDING & PARTICIPATION SUMMARY

Task 4.0 - FY 17

Subtask	Responsible Agency	Transportation Planning Funds (TPF) ¹	FTA Sect. 5307	Local	Total
4.1	LUTS	5,000	0	0	5,000
TOTAL		5,000	0	0	5,000

¹ TPF – This includes both FHWA PL-112 and FTA Section 5303 Funds. TxDOT will apply transportation development credits sufficient to provide the match for TPF. As the credits reflect neither cash nor man-hours, they are not reflected in the funding tables.

VI. TASK 5.0 - SPECIAL STUDIES

A. OBJECTIVE

To further the goals and objectives of the transportation planning process through special studies undertaken by MPO staff or consultants in support of existing or projected local needs. To maintain the transportation management systems required by federal and state regulations, to assist decision-makers in selecting cost-effective strategies to improve the efficiency and safety of and protect the investment systems.

B. EXPECTED PRODUCTS

These are specific studies and projects that address special problem areas or help promote and support transportation related topics.

C. PREVIOUS WORK

The Downtown Signalization Study was completed in FY 2008, the Transit Development Plan was completed in FY 09, the McPherson Corridor Capacity and Mobility Analysis Project was completed in FY 10. In FY 11 both the Bus Rapid Transit Plan and the Del Mar Corridor Study were completed. In FY 2013, the Para-Transit Plan Update was completed. In FY 15, the 2015-2040 MTP, the TMA Certification Project, and the Congestion and Delay Study were completed. The Congestion Management Process (CMP) network and performance measures were adopted, and the Rail Road Quiet Zone study was completed.

D. SUBTASKS

- 5.1 Transit Development Plan-Objective: The study will include: the review and analysis of current operation data, including trend analysis and peer analysis; the evaluation of existing transit services and programs, the assessment of unmet transit needs and service gaps; analysis of individual and system route performance; assessment of current/future operating, capital, and matching needs with available resources; recommendations for service modifications/improvements, and guidance in the preparation of annual budgets. Expected Outcome: To update the study that was performed for the MPO in 2009. (Non-routine work effort - To be conducted by consultant) This is a carryover project.)
- 5.2 Outer Loop Alignment Study- Objective: The study will define alternative alignments, identify and assess potential environmental mitigation issues, include the requisite public outreach activities, and select a preferred alternative alignment for the Laredo Outer Loop. Expected Outcome: The study will identify a preferred alignment for corridor preservation and eventual construction of the proposed four-lane, controlled access, approximately 37 mile long facility identified as the Laredo Outer Loop. (Non-routine work effort - To be conducted by consultant.)
- 5.3 Freight Mobility Plan – Objective- The study will evaluate freight movement in the study in order to: identify freight mobility needs and challenges, develop goals and objectives to improve goods movement, evaluate the impact of freight movement on the regional economy, identify freight transportation facilities and investments necessary for economic growth, define freight policies and programs, and provide recommendations for short, mid-range and long term recommendations for infrastructure improvements. Expected Outcome- A study that will serve as an investment guide for freight mobility improvements in the region. (Non-routine work effort - To be conducted by consultant) This is a carryover project.)
- 5.4 Bicycle and Pedestrian Plan –The MPO with the assistance of FHWA will develop a plan for creating an environment conducive for walking or cycling as a mode choice, as well as, providing recreational opportunities for walking and cycling in order to encourage a healthy lifestyle. The plan is expected to provide guidance for the development and implementation of an interconnected network of designated on-street bicycle facilities as well as off-roadway trails and sidewalks. Work is being conducted by FHWA, in collaboration with the MPO. There will be no costs from FHWA. (Non-routine work effort – to be conducted by FHWA and the MPO)

FY 2017 UPWP

E. FUNDING & PARTICIPATION SUMMARY

Task 5.0 - FY 17

Subtask	Responsible Agency	Transportation Planning Funds (TPF)¹	FTA Sect. 5307	Local	Total
5.1	LUTS	40,000	0	0	40,000
5.2	LUTS	250,000	0	0	250,000
5.3	LUTS	250,000	0	0	250,000
5.4	LUTS	5,000	0	0	5,000
TOTAL		545,000	0	0	545,000

¹ TPF – This includes both FHWA PL-112 and FTA Section 5303 Funds. TxDOT will apply transportation development credits sufficient to provide the match for TPF. As the credits reflect neither cash nor man-hours, they are not reflected in the funding tables.

LAREDO URBAN TRANSPORTATION STUDY-- FY 17

UPWP Task	Description	TPF¹ Funds	FTA Sect. 5307	Local	Total Funds
1.0	Administration-Management	120,000	0	0	120,000
2.0	Data Development and Maintenance	120,000	0	0	120,000
3.0	Short Range Planning	20,000	0	0	20,000
4.0	Metropolitan Transportation Plan	5,000	0	0	5,000
5.0	Special Studies	545,000	0	0	545,000
TOTAL		810,000	0	0	810,000

¹ TPF – This includes both FHWA PL-112 and FTA Section 5303 Funds. TxDOT will apply transportation development credits sufficient to provide the match for TPF. As the credits reflect neither cash nor man-hours, they are not reflected in the funding tables.

Combined Transportation Planning Funds ²	\$ 460,002.00
Estimated Unexpended Carryover	\$ 349,998.00
TOTAL TPF	\$ 810,000.00

² Estimate based on prior years authorizations

FY 2017 UPWP

APPENDIX A

LAREDO URBAN TRANSPORTATION STUDY
POLICY COMMITTEE

Honorable Pete Saenz	Mayor	City of Laredo
Honorable Roque Vela, Jr.	City Councilmember	City of Laredo
Honorable Charlie San Miguel	City Councilmember	City of Laredo
Honorable Roberto Balli	City Councilmember	Laredo Mass Transit Board
Honorable Tano Tijerina	Webb County Judge	Webb County
Honorable John Galo	Webb County Commissioner	Webb County
Honorable Jaime Canales	Webb County Commissioner	Webb County
Ms. Melisa Montemayor	District Administrator	TxDOT
Mr. Albert Ramirez, P.E.	Transportation Planning and Development Director	TxDOT
Ex-Officio		
Honorable Judith Zaffirini	Senator - District 21	State of Texas
Honorable Richard Raymond	Representative - District 42	State of Texas
Honorable Tracy O. King	Representative- District 80	State of Texas

FY 2017 UPWP

**APPENDIX B
METROPOLITAN AREA BOUNDARY MAP**

Map will be inserted separately

FY 2017 UPWP

APPENDIX C

DEBARMENT CERTIFICATION
NEGOTIATED CONTRACTS

- 1) The Laredo Urban Transportation Study (LUTS), as Contractor, certifies to the best of its knowledge and belief, that it and its principals:
 - a. Are not presently debarred, suspended, proposed for debarment, declared ineligible or voluntarily excluded from covered transactions by any federal department or agency;
 - b. Have not within a three-year period preceding this proposal been convicted of or had a civil judgment rendered against them for commission of fraud or a criminal offense in connection with obtaining, attempting to obtain, or performing a public* transaction or contract under a public transaction; violation of federal or state antitrust statutes or commission of embezzlement, theft, forgery, bribery, falsification or destruction of records, making false statements, or receiving stolen property;
 - c. Are not presently indicted for or otherwise criminally or civilly charged by a governmental entity * with commission of any of the offenses enumerated in paragraph (1) (b) of this certification; and
 - d. Have not within a three-year period preceding this application/proposal had one or more public transactions* terminated for cause or default.

- 2) Where the **Contractor** is unable to certify to any of the statements in this certification, such **Contractor** shall attach an explanation to this certification.

* Federal, State, or Local

Chairperson, MPO Policy Committee
Mayor City of Laredo

Date

**FY 2017 UPWP
APPENDIX D**

LOBBYING CERTIFICATION

**CERTIFICATION FOR CONTRACTS, GRANTS,
LOANS AND COOPERATIVE AGREEMENTS**

The undersigned certifies to the best of his or her knowledge and belief, that:

- 1) No federal appropriated funds have been paid or will be paid by or on behalf of the undersigned, to any person for influencing or attempting to influence an officer or employee of any federal agency, a Member of Congress, an officer or employee of Congress, or an employee of a Member of Congress in connection with the awarding of any federal contract, the making of any federal grant, the making of any federal loan, the entering into of any cooperative agreement, and the extension, continuation, renewal, amendment, or modification of any federal contract, grant, loan, or cooperative agreement.
- 2) If any funds other than federal appropriated funds have been paid or will be paid to any person for influencing or attempting to influence an officer or employee of any agency, a Member of Congress, an officer or employee of Congress, or an employee of a Member of Congress in connection with this federal contract, grant, loan, or cooperative agreement, the undersigned shall complete and submit Standard Form - LLL, "Disclosure Form to Report Lobbying," in accordance with its instructions.
- 3) The undersigned shall require that the language of this certification be included in the award documents for all subawards at all tiers (including subcontracts, subgrants, and contracts under grants, loans, and cooperative agreements) and that all subrecipients shall certify and disclosure accordingly.

This certification is a material representation of fact upon which reliance was placed when this transaction was made or entered into. Submission of this certification is a prerequisite for making or entering into this transaction imposed by Section 1352, Title 31, U.S. Code. Any person who fails to file the required certification shall be subject to a civil penalty of not less than \$10,000 and not more than \$100,000 for each such failure.

Chairperson, MPO Policy Committee
Mayor
City of Laredo

Date

FY 2017 UPWP

APPENDIX E

CERTIFICATION OF COMPLIANCE

I, **Pete Saenz**, Chairperson of the Laredo Urban Transportation Study, a duly authorized representative of the Laredo Metropolitan Planning Organization (MPO), do hereby certify that the contract and procurement procedures that are in effect and used by the forenamed MPO are in compliance with 2 CFR 200, "Uniform Administrative Requirements, Cost Principles, and Audit Requirements for Federal Awards," as it may be revised or superseded.

Chairperson, MPO Policy Committee
Mayor
City of Laredo

Date

Attest:

Heberto L. "Beto" Ramirez-
Acting City Secretary
City of Laredo

FY 2017 UPWP

APPENDIX F

CERTIFICATION OF INTERNAL ETHICS AND COMPLIANCE PROGRAM

I, **Pete Saenz**, Chairperson of the Laredo Urban Transportation Study, a duly authorized officer/representative of the Laredo Metropolitan Planning Organization (MPO) do hereby certify that the forenamed MPO has adopted and does enforce an internal ethics and compliance program that is designed to detect and prevent violations of law, including regulations and ethical standards applicable to this entity or its officers or employees and that the internal ethics and compliance program satisfies the requirements of by 43 TAC § 31.39 "Required Internal Ethics and Compliance Program" and 43 TAC § 10.51 "Internal Ethics and Compliance Program" as may be revised or superseded.

Chairperson, MPO Policy Committee
Mayor
City of Laredo

Date

Attest:

Heberto L. "Beto" Ramirez-
Acting City Secretary
City of Laredo

Vanessa Guerra

From: Sara Garza <Sara.Garza@txdot.gov>
Sent: Friday, April 22, 2016 3:59 PM
To: Nathan R. Bratton; Vanessa Guerra
Subject: FW: Quick question on FAST Act

Please include language below in the UPWP from the FAST ACT. Thanks.

From: Peggy Thurin
Sent: Wednesday, March 30, 2016 9:07 AM
To: Tim Juarez; Nick Page; Mansour Shiraz; Raymond Sanchez Jr; Joe Clark; Sara Garza
Subject: FW: Quick question on FAST Act

From: Kirk.Fauver@dot.gov [<mailto:Kirk.Fauver@dot.gov>]
Sent: Tuesday, March 29, 2016 2:59 PM
To: Peggy Thurin; Jack Foster
Cc: Cindy Mueller
Subject: FW: Quick question on FAST Act

FYI.

From: Miller, Harlan (FHWA)
Sent: Tuesday, March 29, 2016 2:58 PM
To: Fauver, Kirk (FHWA); Stark, Jill (FHWA)
Cc: Stevens, Spencer (FHWA)
Subject: RE: Quick question on FAST Act

We won't require them until after the phase-in of the new planning regulations, however, with that said, if they are updating their planning documents, it is a good time to start incorporating them with the updates.

From: Fauver, Kirk (FHWA)
Sent: Tuesday, March 29, 2016 3:56 PM
To: Stark, Jill (FHWA); Miller, Harlan (FHWA)
Cc: Stevens, Spencer (FHWA)
Subject: FW: Quick question on FAST Act
Importance: High

FYI. Does the new FAST Act planning factors apply now for updated UPWPs and TIPs?

Thanks,

Kirk F>

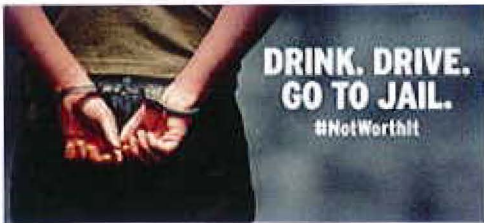
From: Peggy Thurin [<mailto:Peggy.Thurin@txdot.gov>]
Sent: Tuesday, March 29, 2016 2:52 PM
To: Fauver, Kirk (FHWA)
Subject: Quick question on FAST Act
Importance: High

Fast act amended 134 (h) Scope of Planning Process as shown in red below. Do the MPOs need to reference these in their new UPWPs and TIPS?

(h) Scope of Planning Process.—

(1) In general.—The metropolitan planning process for a metropolitan planning area under this section shall provide for consideration of projects and strategies that will—

- (A) support the economic vitality of the metropolitan area, especially by enabling global competitiveness, productivity, and efficiency;
- (B) increase the safety of the transportation system for motorized and nonmotorized users;
- (C) increase the security of the transportation system for motorized and nonmotorized users;
- (D) increase the accessibility and mobility of people and for freight;
- (E) protect and enhance the environment, promote energy conservation, improve the quality of life, and promote consistency between transportation improvements and State and local planned growth and economic development patterns;
- (F) enhance the integration and connectivity of the transportation system, across and between modes, for people and freight;
- (G) promote efficient system management and operation; and
- (H) emphasize the preservation of the existing transportation system; ~~and~~
- (I) improve the resiliency and reliability of the transportation system and reduce or mitigate stormwater impacts of surface transportation; and
- (J) enhance travel and tourism.



Vanessa Guerra

From: Sara Garza <Sara.Garza@txdot.gov>
Sent: Sunday, May 22, 2016 9:48 PM
To: Nathan R. Bratton; Vanessa Guerra
Subject: Fwd: Travel Survey : Proposed UPWP Wording

Please disregard previous email and use this wording on your UPWP 2017 and include the dollar amount that was given on spreadsheet. Thank you

Sent from my iPhone

Begin forwarded message:

From: Peggy Thurin <Peggy.Thurin@txdot.gov>
Date: May 20, 2016 at 7:50:15 AM CDT
To: Tim Juarez <Tim.Juarez@txdot.gov>, Megan Campbell <Megan.Campbell@txdot.gov>, Sara Garza <Sara.Garza@txdot.gov>, Mansour Shiraz <Mansour.Shiraz@txdot.gov>, Raymond Sanchez Jr <Raymond.Sanchez@txdot.gov>, Joe Clark <Joe.Clark@txdot.gov>, Nick Page <Nick.Page@txdot.gov>
Subject: RE: Travel Survey : Proposed UPWP Wording

Please use the following:

Task 2.0 Data Development and Maintenance

TXDOT Data Collection – To conduct travel surveys and/or traffic saturation counts in the MPO region for use in the travel demand models and transportation analysis for pavement and geometric design. Work is being conducted by TXDOT and funding is being provided through the Texas State Planning and Research (SPR) Work Program Part I. Funds will be reconciled as part of the SPR Part I. (\$XXX,XXX SPR)

From: Tim Juarez
Sent: Friday, May 20, 2016 7:00 AM
To: Megan Campbell; Peggy Thurin; Sara Garza; Mansour Shiraz; Raymond Sanchez Jr; Joe Clark; Nick Page
Cc: Tim Juarez
Subject: RE: Travel Survey : Proposed UPWP Wording

Peggy:

The proposed changes listed below appear redundant.

Especially since ***“conducted by TXDOT and funding is being provided through the Texas State Planning and Research (SPR) Work Program”*** appears before the statement ***“Funds will be reconciled as part of the SPR I.”***

As you noted in your email and the guidance from Mike Leary, the dollar amount would vary from MPO to MPO and would be listed in the subtask with reconciliation to the SPR.

In addition, as you provided the SPR, this wording comes from the approved SPR for the data collection activities as related for the saturation counts and travel surveys. With my knowledge of the history,

Vanessa Guerra

From: Sara Garza <Sara.Garza@txdot.gov>
Sent: Tuesday, June 21, 2016 8:59 AM
To: Vanessa Guerra
Subject: RE: Comments on UPWP 2017

You are welcome!

From: Vanessa Guerra [<mailto:vguerra@ci.laredo.tx.us>]
Sent: Tuesday, June 21, 2016 8:27 AM
To: Sara Garza
Subject: RE: Comments on UPWP 2017

Thanks!

From: Sara Garza [<mailto:Sara.Garza@txdot.gov>]
Sent: Monday, June 20, 2016 2:57 PM
To: Nathan R. Bratton; Vanessa Guerra
Subject: Comments on UPWP 2017

In reviewing your draft of the UPWP, Page 11 5.1 on Transit Development Plan Objective states it is a carryover project. The contract will expire on 9/30/16. Will you be asking for an extension ? Will contract be completed? Done disregard

On Appendix A page 13 You need to remove Albert Ramirez and add Pete Alvarez the District Engineer and remove Roque Vela and add George Altgelt.

Page 12 where you show Table 1- Budget Summary –FY 17
That should read Laredo Urban Transportation Study – FY 2017

These are a few comments on the UPWP 2017



- C. Discussion with possible action on the proposed amendment of the Highway MTP/TIP to revise funding on projects 0086-14-081 and 0086-14-065 to facilitate programming of grade separations along Loop 20/US 59 from US 59 to Jacaman for engineering, Right-of-way acquisition, and construction as proposed by Webb County.



Tano E. Tijerina
Webb County Judge

July 13, 2016

Mr. Nathan Bratton
Director – Laredo Urban Transportation Study MPO
1120 San Bernardo Ave
Laredo, Texas 78041

VIA: HAND DELIVERY

RE: Proposed 2017-2020 Transportation Improvement Program (TIP) amendment

- **SL 20 Overpass at I35 - CSJ 0086-14-065 (from 0.33 miles west of I35 to 0.15 miles east of McPherson)**
- **SL 20 Extension – CSJ 0086-14-051 (from Havana to US59)**

Dear Mr. Bratton,

As discussed at the June 20, 2016 Laredo Urban Transportation Study Metropolitan Planning Organization (LUTS-MPO) Policy Committee meeting, due to the possibility of the TxDOT Laredo District receiving federal financial assistance in the form of a USDOT FASTLANE Grant for the Webb County Sponsored State Loop (SL) 20 Overpass at I35 Project. Due to the pending application for additional funding, it was reasonable to delay the letting from Fiscal Year (FY) 2016 to FY 2017 on the LUTS-MPO Transportation Improvement Plan (TIP) with the existing \$39.1 million in federal Coordinated Border Infrastructure (CBI) funds remaining in place.

The purpose of this letter is to provide an update on the status of the development of the above-referenced SL20 Overpass at I-35 project. As the project sponsor, Webb County, in partnership with TxDOT Laredo District and Dannenbaum Engineering have successfully developed the schematic, environmental, and finalized 100% Plans, Specifications, and Estimates (PS&E) for the above-referenced project to bring it to its current shovel ready status. Attached please find the latest construction cost estimate included in the 100% PS&E for the project.

Based on the recently submitted 100% PS&E for the SL20 overpass at I-35, the engineer's estimated construction cost is \$26,564,945.25, significantly lower than the \$39,100,000 in CBI currently programmed to the project at the LUTS-MPO. The most current engineer's estimate includes the changes incorporated by TxDOT Laredo District that include the addition of Intelligent Transportation Systems (ITS) cameras and related infrastructure, concrete pavement throughout the project, concrete slopes, and various drainage modifications. The addition of ITS alone by TxDOT represents a \$1,398,470.30 addition to the current engineer's estimate.

Webb County respectfully requests that the construction cost estimate be updated on LUTS-MPO planning documents during the next TIP amendment cycle to reflect the most current engineer's estimate based on 100% PS&E submitted to TxDOT. This can be accomplished in the same TIP revision that will adjust the letting date to FY 2017. The result of programming the project with the updated estimate would result in freeing up \$12,535,055 in CBI funds at the LUTS-MPO.

The TxDOT Laredo District has committed to receiving an Environmental Clearance for the above referenced SL20 Extension project by December 2016, allowing for Right-of-Way (ROW) acquisition process to begin and the project to become shovel ready in the near future.

As a result, we request that the balance of \$12,535,055 in CBI funds along with anticipated Disbursements of Prop. 1 and Prop. 7 funds allocated to the LUTS-MPO (see attached TxDOT UTP Planning Targets) be programmed in the TIP to fund PS&E, ROW acquisition, and construction of the overpasses along SL20 from US59 to Jacaman (CSJ 0086-14-051) with Webb County as the project sponsor as per the attached programming documents.

Due to the advanced status of the environmental document and the majority of the ROW belonging to local municipalities within the US59 to Airport segment, it is anticipated that the Airport Overpass could be let as soon as September 2017 (FY 2018) and the Jacaman Overpass could be let in September 2019 (FY 2020). This would result in \$35 million in SL 20 construction beginning within 15 months of the date of this letter at ZERO cost to the local governments.

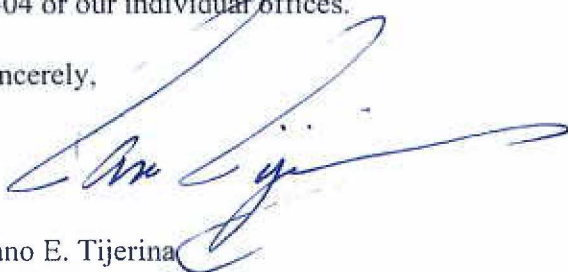
As part of this request, Webb County requests that TxDOT Laredo District commit TxDOT funds, not local LUTS-MPO funds, to fund acquisition of the remaining SL20 Extension ROW, Construction Engineering, Contingencies, overruns, and other related project costs or ancillary project costs outside construction in order to maximize the use of LUTS-MPO funds for construction of the SL20 Extension. The TxDOT Laredo District may also opt to provide an additional \$5.0 million in construction dollars to the LUTS-MPO for SL20 Overpass at Jacaman and accelerate the construction from FY 2020 to FY 2019.

We believe that the attached funding options represent the most aggressive plan of action to make projects along the SL20 corridor shovel ready and leverage REAL locally

directed federal and state monies to expedite construction. The recent release of the proposed FY 2016 FASTLANE Project Awards (attached) did not include the selection of ANY projects within Texas. This is a clear indication that the local project sponsors must utilize the resources recently provided by the State of Texas to fund improvements in our area in the immediate future. This proactive approach of project development by Webb County has proven successful in the construction of the McPherson Overpass, current construction of the International Overpass, and the impending construction of the SL20 Overpass at I-35 scheduled to let in late 2016.

Webb County is committed to partnering with TxDOT, the City of Laredo, and any other entity to expedite construction of infrastructure projects in the region and reduce the burden on the local taxpayer. Should you have any questions, or require further information please contact Mr. Anthony Garza of Dannenbaum Engineering at (956) 639-2404 or our individual offices.

Sincerely,

A handwritten signature in blue ink, appearing to read 'Tano E. Tijerina', with a long, sweeping horizontal stroke extending to the right.

Tano E. Tijerina
Webb County Judge

cc: Richard Raymond, State Representative, 42nd District of Texas
Pete Saenz Mayor, City of Laredo, Chairman, LUTS MPO
Pete Alvarez TxDOT Laredo District Engineer
Luis Perez-Garcia P.E. Webb County Engineer
Louis Jones P.E, Project Manager, Dannenbaum Engineering

CSJ: 0086-14-065

(June 2016 Engineers Construction Cost Estimate)
(SL 20 Airport Overpass and SL 20 Jacaman Overpass)

**LP 20 - IH 35 PROJECT
CONCRETE PAVEMENT DESIGN**

TXDOT District: Laredo
County: Webb
Project: LP20 & IH 35
Limits:

From Sta: 421+69.64
To Sta: 490+35.14

6865.5 Ft

**Revised
Date: 6/23/2016**

Length:
CSJ: 0086-14-065

Prepared By: Dannenbaum Engineering Corp

ROADWAY

ITEM/CODE	ITEM DESCRIPTION	UNITS	QUANTITY	UNIT BID PRICE	TOTAL UNIT BID PRICE
100-6002	PREPARING ROW	STA	68.66	\$1,200.00	\$82,392.00
104-6009	REMOVING CONC (RIPRAP)	SY	40.00	\$15.00	\$600.00
104-6021	REMOVING CONC (CURB)	LF	391.00	\$15.00	\$5,865.00
104-6023	REMOVING CONC (CTB)	LF	14,180.00	\$14.00	\$198,520.00
104-6040	REMOVING CONC (PAVERS)	SY	352.00	\$13.00	\$4,576.00
105-6037	REMOVING STAB BASE AND ASPH PAV(0"-16")	SY	579.00	\$18.00	\$10,422.00
110-6001	EXCAVATION (ROADWAY)	CY	52,340.00	\$7.00	\$366,380.00
132-6002	EMBANKMENT (FINAL)(DENS CONT)(TY A)	CY	26,087.00	\$14.00	\$365,218.00
160-6003	FURNISHING AND PLACING TOPSOIL (4")	SY	90,725.00	\$0.35	\$31,753.75
164-6039	DRILL SEEDING (PERM) (URBAN) (CLAY)	SY	90,725.00	\$0.18	\$16,330.50
168-6001	VEGETATIVE WATERING	MG	1,418.00	\$20.00	\$28,360.00
216-6001	PROOF ROLLING	HR	20.00	\$144.00	\$2,880.00
275-6001	CEMENT	TON	305.00	\$175.00	\$53,375.00
275-6002	CEMENT TREAT (EXIST MATL) (6")	SY	41,053.00	\$3.50	\$143,685.50
310-6009	PRIME COAT (MC-30)	GAL	8,211.00	\$5.00	\$41,055.00
341-6076	D-GR HMA TY B SAC-B PG (64-22)	TON	9,853.00	\$100.00	\$985,300.00
360-6007	CONC PVMT (CONT REINF - CRCP) (13")	SY	41,053.00	\$65.00	\$2,668,445.00
400-6002	STRUCT EXCAV (BOX)	CY	6.00	\$140.00	\$840.00
401-6001	FLOWABLE BACKFILL	CY	3,100.00	\$130.00	\$403,000.00
416-6002	DRILL SHAFT (24 IN)	LF	14.00	\$150.00	\$2,100.00
416-6005	DRILL SHAFT (42 IN)	LF	176.00	\$200.00	\$35,200.00
416-6006	DRILL SHAFT (48 IN)	LF	54.00	\$350.00	\$18,900.00
420-6074	CL C CONC (MISC)	CY	11.00	\$1,500.00	\$16,500.00
423-6001	RETAINING WALL (MSE)	SF	22,093.00	\$48.00	\$1,060,464.00
432-6008	RIPRAP (CONC)(CL B)(RR8&RR9)	CY	255.00	\$500.00	\$127,500.00
432-6045	RIPRAP (MOW STRIP)(4 IN)	CY	5.00	\$499.00	\$2,495.00
432-6046	RIPRAP (MOW STRIP)(5 IN)	CY	48.00	\$600.00	\$28,800.00
442-6016	STRUCTURE STEEL (BRIDGE GRID DECK)	LB	836.00	\$23.00	\$19,228.00
450-6023	RAIL (TY SSTR)	LF	1,943.00	\$60.00	\$116,580.00
462-6019	CONC BOX CULV (8 FT X 4 FT)	LF	548.00	\$425.00	\$232,900.00
464-6003	RC PIPE (CL III)(18 IN)	LF	70.00	\$82.00	\$5,740.00
464-6005	RC PIPE (CL III)(24 IN)	LF	2,637.00	\$85.00	\$224,145.00
464-6007	RC PIPE (CL III)(30 IN)	LF	915.00	\$100.00	\$91,500.00
465-6160	INLET(COMPL)(PAZD)(FG)(4FTX4FT-4FTX4FT)	EA	8.00	\$4,500.00	\$36,000.00
465-6235	INLET (COMPL)(RWI)(TY I)	EA	2.00	\$9,000.00	\$18,000.00
465-6270	MANH (COMPL)(TY M)	EA	13.00	\$3,800.00	\$49,400.00
496-6005	REMOV STR (WINGWALL)	EA	2.00	\$2,000.00	\$4,000.00
496-6006	REMOV STR (HEADWALL)	EA	2.00	\$2,000.00	\$4,000.00
502-6001	BARRICADES, SIGNS AND TRAFFIC HANDLING	MO	15.00	\$2,000.00	\$30,000.00
506-6004	ROCK FILTER DAMS (INSTALL) (TY 4)	LF	120.00	\$42.00	\$5,040.00
506-6011	ROCK FILTER DAMS (REMOVE)	LF	120.00	\$15.00	\$1,800.00

**LP 20 - IH 35 PROJECT
CONCRETE PAVEMENT DESIGN**

**TXDOT District: Laredo
County: Webb
Project: LP20 & IH 35
Limits:**

**From Sta: 421+69.64
To Sta: 490+35.14**

6865.5 Ft

**Revised
Date: 6/23/2016**

**Length:
CSJ: 0086-14-065**

Prepared By: Dannenbaum Engineering Corp

ROADWAY

ITEM/CODE	ITEM DESCRIPTION	UNITS	QUANTITY	UNIT BID PRICE	TOTAL UNIT BID PRICE
506-6020	CONSTRUCTION EXITS (INSTALL) (TY 1)	SY	444.00	\$38.00	\$16,872.00
506-6024	CONSTRUCTION EXITS (REMOVE)	SY	444.00	\$15.00	\$6,660.00
506-6038	TEMP SEDMT CONT FENCE (INSTALL)	LF	12,726.00	\$4.50	\$57,267.00
506-6039	TEMP SEDMT CONT FENCE (REMOVE)	LF	12,726.00	\$1.20	\$15,271.20
506-6041	BIODEG EROSN CONT LOGS (INSTL) (12")	LF	1,925.00	\$7.00	\$13,475.00
506-6043	BIODEG EROSN CONT LOGS (REMOVE)	LF	1,925.00	\$2.00	\$3,850.00
540-6001	MTL W-BEAM GD FEN (TIM POST)	LF	219.00	\$40.00	\$8,760.00
540-6006	MTL BEAM GD FEN TRANS (THRIE-BEAM)	EA	4.00	\$2,500.00	\$10,000.00
540-6016	DOWNSTREAM ANCHOR TERMINAL SECTION	EA	4.00	\$950.00	\$3,800.00
544-6001	GUARDRAIL END TREATMENT (INSTALL)	EA	2.00	\$3,500.00	\$7,000.00
545-6001	CRASH CUSH ATTEN (INSTL)	EA	3.00	\$16,000.00	\$48,000.00
610-6106	IN RD IL (U/P) (TY 2) (150W EQ) LED	EA	4.00	\$1,500.00	\$6,000.00
618-6023	CONDT (PVC) (SCH 40) (2")	LF	8,404.00	\$8.00	\$67,232.00
618-6033	CONDT (PVC) (SCH 40) (4")	LF	516.00	\$18.00	\$9,288.00
618-6047	CONDT (PVC) (SCH 80) (2") (BORE)	LF	1,270.00	\$20.00	\$25,400.00
618-6066	CONDT (RM) (1 1/4")	LF	946.00	\$15.00	\$14,190.00
620-6005	ELEC CONDR (NO.10) BARE	LF	18,640.00	\$1.50	\$27,960.00
620-6006	ELEC CONDR (NO.10) INSULATED	LF	2,028.00	\$1.00	\$2,028.00
620-6007	ELEC CONDR (NO.8) BARE	LF	1,722.00	\$1.25	\$2,152.50
620-6008	ELEC CONDR (NO.8) INSULATED	LF	21,070.00	\$1.50	\$31,605.00
620-6009	ELEC CONDR (NO.6) BARE	LF	8,677.00	\$1.50	\$13,015.50
620-6010	ELEC CONDR (NO.6) INSULATED	LF	10,042.00	\$2.00	\$20,084.00
624-6001	GROUND BOX TY A (122311)	EA	1.00	\$1,200.00	\$1,200.00
624-6002	GROUND BOX TY A (122311)W/APRON	EA	8.00	\$1,000.00	\$8,000.00
624-6008	GROUND BOX TY C (162911)W/APRON	EA	34.00	\$1,100.00	\$37,400.00
628-6002	REMOVE ELECTRICAL SERVICES	EA	2.00	\$570.00	\$1,140.00
628-6046	ELC SRV TY A 240/480 060(NS)SS(E)SP(U)	EA	1.00	\$5,000.00	\$5,000.00
628-6131	ELC SRV TY D 120/240 060(NS)GS(N)SP(O)	EA	14.00	\$2,950.00	\$41,300.00
636-6001	ALUMINUM SIGNS (TY A)	SF	330.00	\$25.00	\$8,250.00
636-6002	ALUMINUM SIGNS (TY G)	SF	63.00	\$24.00	\$1,512.00
636-6003	ALUMINUM SIGNS (TY O)	SF	761.00	\$22.00	\$16,742.00
644-6001	IN SM RD SN SUP&AM TY10BWG(1)SA(P)	EA	9.00	\$600.00	\$5,400.00
644-6004	IN SM RD SN SUP&AM TY10BWG(1)SA(T)	EA	3.00	\$600.00	\$1,800.00
644-6030	IN SM RD SN SUP&AM TYS80(1)SA(T)	EA	7.00	\$650.00	\$4,550.00
644-6064	IN BRIDGE MNT CLEARANCE SGN ASSM(TY N)	EA	4.00	\$2,100.00	\$8,400.00
644-6070	RELOCATE SM RD SN SUP&AM TY S80	EA	18.00	\$360.00	\$6,480.00
644-6076	REMOVE SM RD SN SUP&AM	EA	2.00	\$100.00	\$200.00
644-6078	REMOVE SM RD SN SUP&AM (SIGN ONLY)	EA	9.00	\$75.00	\$675.00
647-6001	INSTALL LRSS (STRUCT STEEL)	LB	407.00	\$4.00	\$1,628.00
650-6028	INS OH SN SUP(30 FT BAL TEE)	EA	3.00	\$30,500.00	\$91,500.00
650-6056	INS OH SN SUP(45 FT BRDG)(SPAN ONLY)	EA	1.00	\$20,000.00	\$20,000.00

**LP 20 - IH 35 PROJECT
CONCRETE PAVEMENT DESIGN**

**TXDOT District: Laredo
County: Webb
Project: LP20 & IH 35
Limits:**

**From Sta: 421+69.64
To Sta: 490+35.14**

6865.5 Ft

**Revised
Date: 6/23/2016**

**Length:
CSJ: 0086-14-065**

Prepared By: Dannenbaum Engineering Corp

ROADWAY

ITEM/CODE	ITEM DESCRIPTION	UNITS	QUANTITY	UNIT BID PRICE	TOTAL UNIT BID PRICE
650-6071	INS OH SN SUP(60 FT BRDG)(SPAN ONLY)	EA	1.00	\$23,000.00	\$23,000.00
666-6036	REFL PAV MRK TY I (W)8"(SLD)(100MIL)	LF	3,401.00	\$1.25	\$4,251.25
666-6042	REFL PAV MRK TY I (W)12"(SLD)(100MIL)	LF	600.00	\$3.50	\$2,100.00
666-6054	REFL PAV MRK TY I (W)(ARROW)(100MIL)	EA	2.00	\$100.00	\$200.00
666-6076	REFL PAV MRK TY I (W)(WORD)(060MIL)	EA	301.00	\$1.00	\$301.00
666-6078	REFL PAV MRK TY I (W)(WORD)(100MIL)	EA	2.00	\$150.00	\$300.00
666-6300	RE PM WRET REQ TY I (W)4"(BRK)(100MIL)	LF	3,470.00	\$0.80	\$2,776.00
666-6303	RE PM WRET REQ TY I (W)4"(SLD)(100MIL)	LF	14,287.00	\$0.45	\$6,429.15
666-6315	RE PM WRET REQ TY I (Y)4"(SLD)(100MIL)	LF	16,359.00	\$0.45	\$7,361.55
672-6010	REFL PAV MRKR TY II-C-R	EA	398.00	\$5.00	\$1,990.00
677-6001	ELIM EXT PAV MRK & MRKS (4")	LF	3,794.00	\$1.25	\$4,742.50
678-6001	PAV SURF PREP FOR MRK (4")	LF	1,211.00	\$0.45	\$544.95
678-6004	PAV SURF PREP FOR MRK (8")	LF	1,689.00	\$2.00	\$3,378.00
678-6006	PAV SURF PREP FOR MRK (12")	LF	902.00	\$3.00	\$2,706.00
680-6002	INSTALL HWY TRF SIG (ISOLATED)	EA	1.00	\$25,000.00	\$25,000.00
"	TRAFFIC SIGNAL CABINET AND CONTROLLER	EA	1.00		
"	TRAFIC SIGNAL FOUNDATION (CONCRETE)	EA	1.00		
"	PREFAV TRAFFIC SIGNAL FOUNDATION	EA	1.00		
"	RELOCATION OF TRAFFIC SIGNAL CABINET	EA	1.00		
"	GROUND ROD (58"X10')	EA	1.00		
"	STREET SIGNS (IH35 & BOB BULLOCK LP)	EA	8.00		
"	FIBER OPTIC TERMINATION (6-STRAND)	EA	2.00		
"	RELOCATION OF ITS NETWORK SWITCH AND FIBER OPTIC PATCH PANEL	EA	2.00		
"	REMOVAL OF EXISTING TRAFFIC SIGNAL CABINET FOUNDATION	EA	2.00		
"	REMOVAL OF EXISTING LUMINARIES	EA	4.00		
"	REMOVAL OF ILLUMINATED STREET SIGNS	EA	8.00		
"	AND CONTROLLER	EA	1.00		
682-6001	VEH SIG SEC (12")LED(GRN)	EA	16.00	\$65.00	\$1,040.00
682-6003	VEH SIG SEC (12")LED(YEL)	EA	16.00	\$70.00	\$1,120.00
682-6005	VEH SIG SEC (12")LED(RED)	EA	16.00	\$65.00	\$1,040.00
682-6016	VEH SIG SEC (12")LED(HOUSING ONLY)	EA	48.00	\$130.00	\$6,240.00
682-6023	BACK PLATE (12")(3 SEC)	EA	16.00	\$65.00	\$1,040.00
684-6007	TRF SIG CBL (TY A)(12 AWG)(2 CONDR)	LF	3,642.00	\$1.45	\$5,280.90
684-6009	TRF SIG CBL (TY A)(12 AWG)(4 CONDR)	LF	3,642.00	\$1.80	\$6,555.60
684-6010	TRF SIG CBL (TY A)(12 AWG)(5 CONDR)	LF	680.00	\$1.50	\$1,020.00
684-6012	TRF SIG CBL (TY A)(12 AWG)(7 CONDR)	LF	3,348.00	\$3.50	\$11,718.00
690-6006	REMOVAL OF GROUND BOXES	EA	6.00	\$235.00	\$1,410.00
690-6009	REMOVAL OF CABLES	LF	17,240.00	\$0.80	\$13,792.00
690-6024	REMOVAL OF SIGNAL HEAD ASSM	EA	28.00	\$210.00	\$5,880.00

**LP 20 - IH 35 PROJECT
CONCRETE PAVEMENT DESIGN**

TXDOT District: Laredo
County: Webb
Project: LP20 & IH 35
Limits:

From Sta: 421+69.64
To Sta: 490+35.14

6865.5 Ft

Revised
Date: 6/23/2016

Length:
CSJ: 0086-14-065

Prepared By: Dannenbaum Engineering Corp

ROADWAY

ITEM/CODE	ITEM DESCRIPTION	UNITS	QUANTITY	UNIT BID PRICE	TOTAL UNIT BID PRICE
690-6105	REROUTE CABLES	LF	6,374.00	\$3.00	\$19,122.00
740-6005	ANTI - GRAFFITI COATNG(PERMNENT-TY III)	SF	22,093.00	\$1.20	\$26,511.60
5001-6001	GEOGRID BASE REINFORCEMENT (TY I)	SY	17,744.00	\$2.00	\$35,488.00
6001-6002	PORTABLE CHANGEABLE MESSAGE SIGN	EA	5.00	\$16,000.00	\$80,000.00
6002-6002	VIVDS CAMERA ASSEMBLY	EA	3.00	\$2,000.00	\$6,000.00
6004-6031	ITS COM CBL (ETHERNET)	LF	710.00	\$3.80	\$2,698.00
6007-6010	FIBER OPTIC CBL (SNGLE-MODE)(6 FIBER)	LF	10,548.00	\$3.10	\$32,698.80
6007-6021	FIBER OPTIC SPLICE ENCLOSURE	EA	6.00	\$4,300.00	\$25,800.00
6007-6022	FIBER OPTIC PATCH PANEL (6 POSITION)	EA	16.00	\$2,300.00	\$36,800.00
6007-6023	FIBER OPTIC PATCH PANEL (12 POSITION)	EA	1.00	\$2,900.00	\$2,900.00
6007-6025	FIBER OPTIC PATCH PANEL (72 POSITION)	EA	1.00	\$3,500.00	\$3,500.00
6008-6023	ITS GRND MNT CAB (TY 4) (CONF 1)	EA	3.00	\$13,200.00	\$39,600.00
6010-6001	CCTV FIELD EQUIPMENT (ANALOG)	EA	5.00	\$9,300.00	\$46,500.00
6010-6013	REMOVE CCTV FIELD EQUIPMENT	EA	1.00	\$1,500.00	\$1,500.00
6027-6003	CONDUIT (PREPARE)	LF	17,497.00	\$2.00	\$34,994.00
6028-6002	INSTALL DMS (FOUNDATION MTD CABINET)	EA	3.00	\$17,500.00	\$52,500.00
6029-6001	RADAR VEHICLE SENSING DEVICE	EA	10.00	\$9,850.00	\$98,500.00
6064-6027	ITS POLE (40 FT)(REM)	EA	1.00	\$1,500.00	\$1,500.00
6064-6037	ITS POLE (50 FT)(90 MPH)	EA	12.00	\$13,150.00	\$157,800.00
6064-6038	ITS POLE (50 FT)(110 MPH)	EA	2.00	\$15,000.00	\$30,000.00
6064-6076	ITS POLE MNT CAB (TY 1)(CONF 2)	EA	12.00	\$6,500.00	\$78,000.00
6134-6001	REMOVE DYNAMIC MESSAGE SIGN SYSTEM	EA	2.00	\$11,200.00	\$22,400.00
6186-6004	ITS GND BOX(PCAST) TY 1 (243648)W/APRN	EA	15.00	\$2,300.00	\$34,500.00
6186-6005	INSTALLATION OF DIGITAL VIDEO ENCODER	EA	5.00	\$900.00	\$4,500.00
6186-6006	INSTALLATION OF TRANSCEIVER	EA	28.00	\$650.00	\$18,200.00
6186-6007	INSTALLATION OF HARDENED ETHERNET SWITCH	EA	1.00	\$650.00	\$650.00
6186-6008	INSTALLATION OF WBER SYSTEM	EA	2.00	\$1,400.00	\$2,800.00
6186-6009	INSTALLATION OF ETHERNET SURGE PROTECTOR	EA	4.00	\$350.00	\$1,400.00
SUBTOTAL ROADWAY					\$9,248,456.25

BRIDGE ITEMS

400-6005	CEM STABIL BKFL	CY	410.60	\$135.00	\$55,431.00
416-6004	DRILL SHAFT (36 IN)	LF	821.00	\$180.00	\$147,780.00
416-6006	DRILL SHAFT (48 IN)	LF	1,183.00	\$350.00	\$414,050.00
416-6008	DRILL SHAFT (60 IN)	LF	1,958.00	\$400.00	\$783,200.00
420-6013	CL C CONC (ABUT)	CY	125.10	\$1,500.00	\$187,650.00
420-6025	CL C CONC (BENT)	CY	4,400.50	\$1,000.00	\$4,400,500.00
422-6001	REINF CONC SLAB	SF	247,622.00	\$15.00	\$3,714,330.00
422-6015	APPROACH SLAB	CY	169.50	\$500.00	\$84,750.00
425-6039	PRESTR CONC GIRDER (TX54)	LF	30,751.09	\$140.00	\$4,305,152.60
450-6023	RAIL (TY SSTR)	LF	11,750.41	\$60.00	\$705,024.60

**LP 20 - IH 35 PROJECT
CONCRETE PAVEMENT DESIGN**

**TXDOT District: Laredo
County: Webb
Project: LP20 & IH 35
Limits:**

**From Sta: 421+69.64
To Sta: 490+35.14**

6865.5 Ft

**Revised
Date: 6/23/2016**

**Length:
CSJ: 0086-14-065**

Prepared By: Dannenbaum Engineering Corp

ROADWAY

ITEM/CODE	ITEM DESCRIPTION	UNITS	QUANTITY	UNIT BID PRICE	TOTAL UNIT BID PRICE
454-6001	SEALED EXPANSION JOINT (4 IN) (SEJ - A)	LF	862.20	\$94.00	\$81,046.80
471-6007	GRATE AND FRAME (BRIDGE DRAIN)	EA	26.00	\$4,000.00	\$104,000.00
636-6001	ALUMINUM SIGNS (TY A)	SF	56.00	\$25.00	\$1,400.00
644-6065	IN BRIDGE MNT CLEARANCE SGN ASSM(TY S)	EA	2.00	\$2,100.00	\$4,200.00
SUBTOTAL BRIDGE ITEMS					\$14,988,515.00

STATE FORCE ACCOUNT ITS ITEMS

	FIELD HARDENED ETHERNET SWITCH	EA	1.00	\$2,500.00	\$2,500.00
	DYNAMIC MESSAGE SIGN (DMS) WITH GND MNT CABINET	EA	3.00	\$85,500.00	\$256,500.00
	VIDEO ENCODERS (1 CHANNEL)	EA	5.00	\$1,500.00	\$7,500.00
	MEDIA CONVERTER CARD CAGE	EA	2.00	\$800.00	\$1,600.00
	ETHERNET MEDIA CONVERTER (TRANSCIVER)	EA	28.00	\$1,000.00	\$28,000.00
	ETHERNET SURGE PROTECTOR	EA	3.00	\$300.00	\$900.00
	WBER SYSTEM 5.8 GHZ SYSTEM	EA	2.00	\$1,600.00	\$3,200.00
SUBTOTAL STATE FORCE ACCOUNT ITS ITEMS					\$300,200.00

STATE FORCE ACCOUNT UTILITIES

	EXTEND POWER LINES	LS	1.00	\$60,000.00	\$60,000.00
SUBTOTAL STATE FORCE ACCOUNT UTILITIES					\$60,000.00

CONSTRUCTION COST SUBTOTAL = \$24,597,171.25

500-6001	MOBILIZATION	LS		MOBILIZATION (8% ROADWAY, BRIDGE) SUBTOTAL	\$1,967,774.00
----------	--------------	----	--	---	----------------

CONSTRUCTION COST TOTAL = \$26,564,945.25

TxDOT UTP Planning Targets

DRAFT 2017 UTP PLANNING TARGETS

Category 2: Metropolitan (TMA) and Urbanized (Non-TMA) Corridor Total Funding Summary including Prop 1 & Additional											
District/MPQ/Division	FY 2017	FY 2018	FY 2019	FY 2020	FY 2021	FY 2022	FY 2023	FY 2024	FY 2025	FY 2026	TOTALS
Abilene											
Amarillo											
Asanta											
Austin											
Beaumont											
Brownwood											
Bryan											
Childress											
Corpus Christi											
Dallas											
El Paso											
Fort Worth											
Houston											
Laredo											
Lubbock											
Lufkin											
Odessa											
Paris											
Pharr											
San Angelo											
San Antonio											
Tyler											
Waco											
Wichita Falls											
Yoakum											
(ABL) AbileneMPO	1,520,000	5,120,000	5,290,000	6,660,000	7,470,000	7,510,000	7,690,000	7,910,000	7,920,000	7,820,000	\$ 65,410,000
(AMA) Amarillo MPO	8,270,000	20,030,000	14,800,000	11,090,000	12,070,000	12,140,000	12,760,000	12,790,000	12,810,000	12,800,000	\$ 129,560,000
(ATL) Texarkana MPO	990,000	2,980,000	3,080,000	4,000,000	4,350,000	4,370,000	4,800,000	4,810,000	4,610,000	4,610,000	\$ 38,100,000
(AUS) CAMPO TMA	41,110,000	178,040,000	143,250,000	112,990,000	122,460,000	123,150,000	129,480,000	129,810,000	129,890,000	129,890,000	\$ 1,239,630,000
(BMT & HOU) HGAC TMA	200,350,000	291,460,000	299,280,000	298,170,000	324,000,000	328,430,000	343,190,000	344,070,000	344,440,000	344,280,000	\$ 3,182,270,000
(BMT) JHRTS MPO	6,250,000	27,530,000	21,870,000	38,070,000	30,580,000	30,790,000	32,330,000	32,410,000	32,450,000	32,430,000	\$ 284,470,000
(BRY) Bryan-College Station MPO	2,650,000	8,880,000	18,350,000	11,900,000	12,950,000	13,020,000	13,690,000	13,730,000	13,740,000	13,740,000	\$ 122,660,000
(CRP) Corpus Christi TMA	3,580,000	24,580,000	12,430,000	48,720,000	17,540,000	11,840,000	18,550,000	18,600,000	18,620,000	18,610,000	\$ 195,870,000
(DAL) FTW & PAR; NCTCDG TMA	111,100,000	312,480,000	336,780,000	437,290,000	419,250,000	416,600,000	437,890,000	439,100,000	438,570,000	439,370,000	\$ 3,784,530,000
(ELP) El Paso TMA	10,610,000	36,690,000	49,590,000	35,100,000	38,210,000	38,600,000	40,400,000	40,510,000	40,550,000	40,530,000	\$ 370,620,000
(LRD) Laredo TMA	2,430,000	14,980,000	8,420,000	10,910,000	11,880,000	11,950,000	12,560,000	12,600,000	12,610,000	12,600,000	\$ 110,840,000
(LBB) Lubbock TMA	2,480,000	8,240,000	8,520,000	11,040,000	12,020,000	12,090,000	12,710,000	12,740,000	12,760,000	12,750,000	\$ 105,330,000
(OOD) Midland-Odessa TMA	6,330,000	12,880,000	13,320,000	17,280,000	18,790,000	18,900,000	19,870,000	19,920,000	19,940,000	19,930,000	\$ 167,140,000
(PAR) Sherman-Denison MPO	3,140,000	11,810,000	13,640,000	8,600,000	9,040,000	9,090,000	9,560,000	9,580,000	9,590,000	9,590,000	\$ 93,340,000
(PHR) Harlingen-San Benito MPO	1,920,000	6,430,000	6,850,000	1,620,000	8,390,000	8,440,000	8,920,000	8,950,000	8,960,000	8,950,000	\$ 82,240,000
(PHR) Hidalgo County TMA	7,960,000	26,710,000	27,610,000	38,790,000	38,960,000	39,180,000	41,190,000	41,300,000	41,340,000	41,320,000	\$ 341,360,000
(PHR) Brownsville TMA	2,170,000	7,290,000	7,340,000	9,770,000	10,630,000	10,790,000	11,240,000	11,270,000	11,280,000	11,280,000	\$ 93,160,000
(SJT) San Angelo MPO	1,000,000	14,840,000	3,470,000	4,490,000	4,890,000	4,920,000	5,170,000	5,190,000	5,190,000	5,190,000	\$ 54,340,000
(SAT) AAMPO	139,780,000	116,330,000	113,210,000	184,580,000	123,980,000	124,690,000	131,090,000	131,620,000	131,570,000	131,500,000	\$ 1,302,140,000
(TYL) Tyler MPO	3,340,000	27,100,000	11,590,000	15,030,000	16,360,000	16,450,000	17,300,000	17,340,000	17,360,000	17,350,000	\$ 169,220,000
(TYL) Longview MPO	1,680,000	5,640,000	13,470,000	7,560,000	8,230,000	8,270,000	8,700,000	8,720,000	8,730,000	8,730,000	\$ 79,730,000
(WAC) Killeen-Temple TMA	4,960,000	16,630,000	17,190,000	22,280,000	24,260,000	24,400,000	25,650,000	25,710,000	25,740,000	25,730,000	\$ 212,550,000
(WAC) Waco MPO	4,480,000	14,970,000	34,250,000	20,060,000	21,840,000	21,960,000	23,090,000	23,150,000	23,160,000	23,160,000	\$ 210,120,000
(WFS) Wichita Falls MPO	1,230,000	4,130,000	4,270,000	5,530,000	6,020,000	6,060,000	6,070,000	6,390,000	6,390,000	6,390,000	\$ 52,780,000
(WKM) Victoria MPO	1,680,000	5,620,000	6,510,000	7,530,000	8,200,000	8,250,000	8,690,000	8,690,000	8,700,000	8,700,000	\$ 71,850,000
Bridge Division											
Traffic Division											
Design Division											
Federal Railway-Highway Safety Program											
Railroad Grade Crossing Program											
Railroad Signal Maintenance Program											
Texas Parks and Wildlife Program											
Landscape Incentive Awards Program											
Americans with Disabilities Act											
PTN TAP											
TAP Flex											
Green Ribbon											
Strategic Partnership Agreement with RMA's											
Federal Lands Access Program											
Statewide											
Statewide Unallocated											
TOTAL	\$ 570,850,000	\$ 1,195,490,000	\$ 1,259,480,000	\$ 1,349,440,000	\$ 1,308,960,000	\$ 1,316,380,000	\$ 1,383,970,000	\$ 1,387,500,000	\$ 1,389,000,000	\$ 1,388,360,000	\$ 12,549,450,000

05/04/16

2017-2020 TIP Amendment
(SL 20 Airport Overpass and SL 20 Jacaman Overpass)

Laredo Urban Transportation Study Metropolitan Transportation Organization 10 Year UTP Funding Projection:

Fiscal Year	2016	2017	2018	2019	2020	2021	2022	2023	2024	2025	2026
Proposition 1 MPO Only	\$ -	\$ 2,430,000.00	\$ -	\$ -	\$ -	\$ -	\$ -	\$ -	\$ -	\$ -	\$ 2,430,000.00
Proposition 1 & 7 MPO Only Planning Target*	\$ -	\$ -	\$ 14,980,000.00	\$ 8,420,000.00	\$ 10,910,000.00	\$ 11,880,000.00	\$ 11,950,000.00	\$ 12,560,000.00	\$ 12,600,000.00	\$ 12,610,000.00	\$ 12,600,000.00
CBI	\$ 39,959,667.82										
Subtotals	\$ 39,959,667.82	\$ 2,430,000.00	\$ 14,980,000.00	\$ 8,420,000.00	\$ 10,910,000.00	\$ 11,880,000.00	\$ 11,950,000.00	\$ 12,560,000.00	\$ 12,600,000.00	\$ 12,610,000.00	\$ 12,600,000.00
TIP / STIP Years (2015-2018)											
UTP Years (2016-2025)											
Estimated Total Funding Available	\$ -	\$ 2,430,000.00	\$ 14,980,000.00	\$ 8,420,000.00	\$ 10,910,000.00	\$ 11,880,000.00	\$ 11,950,000.00	\$ 12,560,000.00	\$ 12,600,000.00	\$ 12,610,000.00	\$ 12,600,000.00

Obligated to Loop 20 @ I35 (\$39.1 mil - current CC estimate)	
Unobligated	

Loop 20 Project Programming

Project	2016	2017	2018	2019	2020	2021	2022	2023	2024	2025	2026
I-35 Interchange Facility @ Loop 20 (CS): 0086-14-065)		\$ 26,564,945.25									
PS&E from 59 to Jacaman		\$ 4,641,000.28									
Airport Overpass and Roadway to US-59 ROW		\$ 4,806,663.03									
LP 20 Airport Overpass Construction			\$ 14,785,990.58								
Jacaman Overpass Construction**					\$ 19,691,423.83						
Total FY Funding Available prior to Programming	\$ 39,959,667.82	\$ 42,389,667.82	\$ 21,357,029.25	\$ 14,991,038.67	\$ 25,901,038.67	\$ 18,089,614.84	\$ 30,039,614.84	\$ 42,599,614.84	\$ 55,199,614.84	\$ 67,809,614.84	\$ 80,409,614.84
Unallocated Funds	\$ 39,959,667.82	\$ 6,377,029.25	\$ 6,571,088.67	\$ 14,991,038.67	\$ 6,209,614.84	\$ 18,089,614.84	\$ 30,039,614.84	\$ 42,599,614.84	\$ 55,199,614.84	\$ 67,809,614.84	\$ 80,409,614.84

	Design Phase
	ROW Phase
	Construction Phase

*Based on most recent TxDOT literature. All assumptions were based on current revenue estimates in the 2016 UTP and literature from TxDOT regarding Proposition 1 and 7 amounts. These amounts do not include Proposition 1 and/or 7 amounts that the TxDOT Laredo District may receive in addition to the disbursements to the LUTS MPO. ** \$4.7 million in additional TxDOT Laredo District funds would accelerate construction from FY2020 to FY2019

Project		I-35 Interchange Facility @ Loop 20 (CSJ: 0086-14-065) Scheduled letting: November - December 2016 - FY 2017				
ORIGINAL ESTIMATE - 7/20/15 by TxDOT						
ROW	0.00%				\$0.00	
Construction Engineering	4.69%				\$1,976,456.00	
2016 Construction Cost - TxDOT					\$42,141,921.00	
Contingency	2.99%				\$1,260,043.00	
Indirect	5.74%				\$2,418,946.00	
Total Project Cost					\$47,797,366.00	
CURRENT LUTSMPO TIP LISTING - 7/20/15						
Funding by Category	Phase	Total	Federal	State	Local	
CBI*	Construction	39,100,000.00	31,280,000.00	7,820,000.00	0.00	
TOTAL PROGRAMMED FUNDS		39,100,000.00				
LATEST ESTIMATE - 7/8/2016 - DEC						
Reconciliation						
Letting Year					2016	
ROW	0.00%				\$0.00	
Construction Engineering	4.69%				\$2,435,104.25	
2016 Construction Cost**					\$26,564,945.25	
Contingency	2.99%				\$1,552,443.39	
Indirect	5.74%				\$2,980,276.66	
Total Project Cost					\$33,532,769.55	
PROPOSED PROGRAMMING - Q4 2016						
Funding by Category	Phase	Total	Federal	State	Local	
CBI	Construction	26,564,945.25	21,251,956.20	5,312,989.05	0.00	
TOTAL PROGRAMMED FUNDS		26,564,945.25	21,251,956.20	5,312,989.05	0.00	
CBI FUNDS to Redistribute from I 35 project			\$12,535,054.75			
Note: * based on the 9/18/15 LUTS MPO Meeting request to shift \$300,000 for the Hachar Loop Phase II advanced planning costs to Webb County from CBI. ** Based on most recent project cost estimate by TxDOT and includes ITS (as requested by TxDOT). Cost reflects a 14" pavement thickness and 13" will be constructed.						

Project		PS&E from 59 to Jacaman Scheduled letting: December 2016 - FY 2017			
LATEST ESTIMATE - 6/24/2016 - DEC					
ROW			\$21,949,914.54		
Construction Cost			\$84,382,368.79		
Construction Engineering	4.50%		\$3,797,206.60		
Contingency	6.50%		\$5,484,853.97		
Indirect	6.20%		\$5,231,706.87		
PS&E*	5.50%		\$4,641,030.28		
Total Project Cost			\$125,487,081.04		
YOE Cost			\$4,641,030.28		
PROPOSED PROGRAMMING					
Funding by Category	Phase	Total	Federal	State	Local
CBI	Construction	4,641,030.28	3,712,824.23	928,206.06	0.00
TOTAL PROGRAMMED FUNDS		4,641,030.28	3,712,824.23	928,206.06	0.00
CBI FUNDS to Redistribute					
* based off of the latest estimate including the design of the Hike and Bike along Loop 20, requires negotiation and approval of fee by TxDOT.					

Project		Airport Overpass and Roadway to US-59 ROW			
		Scheduled letting: FY 2017			
LATEST ESTIMATE - 6/24/2016 - DEC					
ROW			\$4,806,663.03		
Construction Cost			\$34,390,806.27		
Construction Engineering	4.50%		\$1,547,586.28		
Contingency	6.50%		\$2,235,402.41		
Indirect	6.20%		\$2,132,229.99		
Total Project Cost*			\$45,112,687.98		
YOE Cost			\$4,806,663.03		
PROPOSED PROGRAMMING					
Funding by Category	Phase	Total	Federal	State	Local
CBI	Construction	4,806,663.03	3,845,330.43	961,332.61	0.00
		4,806,663.03	3,845,330.43	961,332.61	0.00
*no escalation was used on lettings within the 2017-2020 TIP years or ROW costs, outside of FY 2020 3% escalation per year was used					

Project		LP 20 Airport Overpass Construction				
		Scheduled letting: September 2017 - FY 2018				
LATEST ESTIMATE - 6/24/2016 - DEC						
ROW			\$4,806,663.03			
Construction Cost			\$14,785,990.58			
Construction Engineering	4.50%		\$665,369.58			
Contingency	6.50%		\$961,089.39			
Indirect	6.20%		\$916,731.42			
Total Project Cost*			\$22,135,843.99			
YOE Cost			\$14,785,990.58			
PROPOSED PROGRAMMING						
Funding by Category	Phase	Total	Federal	State	Local	
Proposition 1	Construction	2,430,000.00	0.00	2,430,000.00	0.00	
Proposition 1 & 7 MPO Only Plan	Construction	12,355,990.58	0.00	12,355,990.58	0.00	
TOTAL PROGRAMMED FUNDS		14,785,990.58	0.00	14,785,990.58	0.00	
*no escalation was used on lettings within the 2017-2020 TIP years or ROW costs, outside of FY 2020 3% escalation per year was used						

Project		Jacaman Overpass Construction**				
		Scheduled letting: September 2019 - FY 2020				
LATEST ESTIMATE - 10/1/15 - DEC						
Preliminary Engineering						
ROW				\$8,807,487.54		
Construction Cost				\$19,691,423.83		
Construction Engineering	4.50%			\$886,114.07		
Contingency	6.50%			\$1,279,942.55		
Indirect	6.20%			\$1,220,868.28		
PS&E	5.50%			\$1,083,028.31		
Total Project Cost*				\$32,968,864.58		
YOE Cost				\$19,691,423.83		
PROPOSED PROGRAMMING						
Funding by Category	Phase	Total	Federal	State	Local	
Proposition 1 & 7 MPO Only Plan	Construction	19,691,423.83	0.00	19,691,423.83	0.00	
TOTAL PROGRAMMED FUNDS		19,691,423.83	0.00	19,691,423.83	0.00	
*no escalation was used on lettings within the 2017-2020 TIP years or ROW costs, outside of FY 2020 3% escalation per year was used. ** \$4.7 million in additional TxDOT Laredo District funds would accelerate construction from FY2020 to FY2019						

**U.S. Department of Transportation
Proposed FY 2016 FASTLANE Project Awards**



U.S. Department of Transportation Proposed FY 2016 FASTLANE Project Awards

Pursuant to Section 1105 of the FAST Act, the Department is providing this list of proposed awards to the authorizing committees of jurisdiction. This list must remain with the committees for 60 days before issuing the awards.

The U.S. Department of Transportation conducted a thorough and fully documented review process to choose projects that will have significant regional and national impacts by reducing congestion, expanding capacity, using innovative technology, improving safety, or moving freight more efficiently.

This list of proposed Fostering Advancements in Shipping and Transportation for the Long-term Achievement of National Efficiencies (FASTLANE) grant awards is the culmination of a thorough technical assessment of 212 applications requesting a total of \$9.8 billion, more than 10 times the available amount. Due to funding limitations, we were only able to fund a small percentage of the excellent, eligible applications.

Project Name	Applicant Organization	State	Project Size	FASTLANE Proposed Award	Total Project Cost	117(d)(2)(A) Limitation*
Interstate 10 Phoenix to Tucson Corridor Improvements	Arizona Department of Transportation	AZ	Large	\$54,000,000	\$157,500,000	-
SR-11 Segment 2 and Southbound Connectors	California Department of Transportation	CA	Large	\$49,280,000	\$172,200,000	-
Arlington Memorial Bridge Reconstruction Project	National Park Service	DC	Large	\$90,000,000	\$166,000,000	-
Port of Savannah International Multi-Modal Connector	Georgia Ports Authority	GA	Large	\$44,000,000	\$126,700,000	\$32,000,000
I-10 Freight CoRE	Louisiana Department of Transportation and Development	LA	Large	\$60,000,000	\$193,508,409	-
Conley Terminal Intermodal Improvements and Modernization	Massachusetts Port Authority	MA	Large	\$42,000,000	\$102,890,000	\$42,000,000
I-390/I-490/Route 31 Interchange, Lyell Avenue Corridor Project	New York State Department of Transportation	NY	Large	\$32,000,000	\$162,900,000	-
US 69/75 Bryan County	Oklahoma Department of Transportation	OK	Large	\$62,000,000	\$120,625,000	-
Atlantic Gateway: Partnering to Unlock the I-95 Corridor	Virginia Department of Transportation	VA	Large	\$165,000,000	\$905,000,000	\$45,000,000
South Lander Street Grade Separation and Railroad Safety Project	City of Seattle	WA	Large	\$45,000,000	\$140,000,000	-
I-39/90 Corridor Project	Wisconsin Department of Transportation	WI	Large	\$40,000,000	\$1,195,300,000	-
Truck Parking Availability System (TPAS)	Florida Department of Transportation	FL	Small	\$10,778,237	\$23,983,850	-
Cedar Rapids Logistics Park	Iowa Department of Transportation	IA	Small	\$25,650,000	\$46,500,000	\$25,650,000
U.S 95 North Corridor Access Improvement Project	U.S 95 North Corridor Access Improvement Project	ID	Small	\$5,100,000	\$8,500,000	-
Maine Intermodal Port Productivity Project	Maine Department of Transportation	ME	Small	\$7,719,173	\$15,438,347	\$7,122,485
Cross Harbor Freight Program (Rail)	The Port Authority of New York and New Jersey	NY	Small	\$10,672,590	\$17,787,650	\$10,672,590
Coos Bay Rail Line - Tunnel Rehabilitation Project	Oregon International Port of Coos Bay	OR	Small	\$11,000,000	\$19,555,000	\$11,000,000
Strander Boulevard Extension and Grade Separation Phase 3	City of Tukwila	WA	Small	\$5,000,000	\$38,000,000	-
Total				\$759,200,000	\$3,612,388,256	\$173,445,075

Legend:
Urban: White
Rural: Gray

*Number is estimated and subject to revision based on final negotiated project budgets



**LAREDO URBAN TRANSPORTATION STUDY
ACTION ITEM**

DATE: 7-18-16	SUBJECT: RESOLUTION Receive public testimony and approve Resolution No. MPO 2016-09, adopting the proposed revision(s) of the 2015-2040 Laredo Metropolitan Transportation Plan (MTP), which are as follows: <ol style="list-style-type: none"> 1. Amending Table 12-10, entitled Roadway and Bicycle/Pedestrian Project Summary and Table 12-12 and 12-15, entitled Category 7 and 10 Roadway Projects, respectively, Figure 13-1, entitled Natural Resources and Federally Funded Projects; Figure 13-2, entitled Cultural Resources and Federally Funded Projects; Figure 13-3, entitled Low Income Areas and Federally Funded Projects; Table 13-1, entitled Federally Funded Projects Environmental Assessment Results; Table 13-3, entitled Federally Funded Projects and Environmental Justice Populations and Table 13-4 entitled Colonias and Federally Funded Projects by: <ol style="list-style-type: none"> a. Adding project CSJ 0086-14-081 intended to provide for the constructing and engineering of the ITS portion of an interchange facility over IH35, from 1.400 miles west of IH 35 to 0.600 miles west of McPherson Road, with an estimated project cost of \$1,000,000. Proposed project letting date is FY 2017 (January 2017). b. Adding project CSJ 0922-33-175 intended to provide funds for PS&E (including right-of-way mapping) for the Hachar-Reuthinger Road Project from FM 1472 to IH35 with an estimated project cost of \$1,634,277. Proposed letting date is FY 2017 (February 2017). c. Revising project CSJ 0922-33-165 intended to provide for construction, engineering, and contingencies for the Hachar-Reuthinger Road Project, from FM 1472 to 0.1 miles east of Beltway Parkway. Purpose of amendment is to revise funding amounts from \$22,936,054 in local funds to \$21,437,521 in Category 7 funds and \$5,359,380 in local funds. Proposed letting date is FY 2019 (September 2018). d. Revision of CSJ 0922-33-166 intended to provide for the construction, engineering and contingencies for the Hachar-Reuthinger Road project, a 5 lane rural roadway, from 0.1 miles east of Beltway Parkway to IH 35 West Frontage Road. Purpose of amendment is to revise funding amounts from \$28,193,851 in local funds to \$17,152,535 in Category 7 funds and \$3,430,507 in local funds. Proposed letting year is FY 2023. 	
MTP15-40/REV 05		
INITIATED BY: TxDOT/MPO		
STAFF SOURCE: Nathan Bratton, MPO Director		
PREVIOUS ACTION: On December 15, 2014, the Policy Committee adopted the 2015-2040 Metropolitan Transportation Plan (MTP). The Policy Committee approved revision #1 of the MTP on April 20, 2015. On October 19 th , 2015 the Policy Committee approved Resolution No. MPO 2015-11 adopting Revision 2. On March 21, 2016, the Policy Committee approved revision #3 and also approved the initiation of a 10 day public review and comment period for proposed revision #4. On December 21, 2015, the Policy Committee approved the allocation of 4.482 million dollars in Proposition 1, Category 2 (MPO) funds to the project identified as CSJ 2150-04-067 for the widening of pavement to provide additional travel lanes on FM 1472 (Mines Road) from Killam Industrial Boulevard to 0.3 miles north of Mueller Boulevard with an estimated letting date of August 2016. On June 20 th , 2016, the Policy Committee approved the initiation of a 10 day public review and comment period for the proposed MTP revisions.		
BACKGROUND: The development of the MTP is federally required in to assure the continuation of federal transportation funds. The plan must address, at a minimum, a continuous twenty-year planning horizon. See attachments for full details of all proposed revisions.		
COMMITTEE RECOMMENDATION: Approval.	STAFF RECOMMENDATION: Approval.	

RESOLUTION NO. MPO 2016-09

BY THE LAREDO URBAN TRANSPORTATION STUDY
METROPOLITAN PLANNING ORGANIZATION POLICY COMMITTEE

ADOPTING THE 2015-2040 METROPOLITAN TRANSPORTATION PLAN (MTP)

WHEREAS, the Laredo Urban Transportation Study (LUTS), the designated Metropolitan Planning Organization (MPO) for the Laredo Urban Area, has reviewed the proposed revision(s) of the 2015-2040 Metropolitan Transportation Plan (MTP); and,

WHEREAS, the Laredo Urban Transportation Study finds that the proposed revision(s) of the 2015-2040 Metropolitan Transportation Plan (MTP) meets the high priority improvements necessary for the LUTS area;

NOW THEREFORE BE IT RESOLVED, that the Laredo Urban Transportation Study, as the designated Metropolitan Planning Organization for the Laredo Urban Area, adopted the proposed revisions of the 2015-2040 Metropolitan Transportation Plan (MTP), which are attached hereto and made a part hereof for all purpose:

We certify that the above resolution was adopted on July 18, 2016, at a public meeting of the Policy Committee of the Laredo Urban Transportation Study.

Honorable Pete Saenz
Mayor of Laredo and Chairperson of the
MPO Policy Committee

Nathan Bratton
MPO Director

Melisa Montemayor
Laredo District Administrator

Table 12-10: Roadway and Bicycle/Pedestrian Projects Summary

Cat	CS/No./ID	Roadway	Limits	Description	Letting Year	Project Cost		Projected Revenue	
						Total Project Cost (in 2014 dollars)	Year of Expenditure Cost	Federal Revenue	Other Revenue (RMA and Local Sources)
7, 11	0086-14-061	Loop 20	SH 359 to Spur 400	Widen existing bridge	2015	\$10,245,646	\$10,655,472	\$8,524,378	\$2,131,094
1, 2, 4	0086-14-062	Loop 20	1.09 S. of Spur 400 to Spur 400	New Nonfreeway frontage road	2015	\$16,936,138	\$17,613,584	\$1,506,867	\$16,106,717
8	0018-06-168	IH 35	At US 59 intersection	Improve traffic signal on frontage road	2015	\$96,146	\$99,992	\$81,702	\$18,290
8	0038-01-076	US 83	Palo Blanco to SH 359	Improve traffic signals - interconnect signals	2015	\$124,873	\$129,868	\$109,625	\$20,243
8	0038-01-077	US 83	Cielito Lindo to Palo Blanco	Improve traffic signals - interconnect signals	2015	\$171,131	\$177,976	\$131,375	\$46,601
8	0086-01-077	US 83	IH 35 to SH 359	Improve traffic signals - interconnect signals	2015	\$174,922	\$181,919	\$153,625	\$28,294
8	0542-01-079	US 59	IH 35 to Arkansas	Improve traffic signals - interconnect signals	2015	\$140,963	\$146,602	\$123,750	\$22,852
8	2150-04-057	FM 1472	At Loop 20	Improve traffic signal, interconnect signals, and install overhead guide signs	2015	\$90,700	\$94,328	\$77,074	\$17,254
8	2150-04-060	FM 1472	Killam Industrial Blvd to Pellegrino	Install raised median	2015	\$149,669	\$155,656	\$128,438	\$27,218
9	9	Alexander Hike and Bike Trail	Zacate Dam to Del Mar Blvd	Construct hike and bike trail	2015	\$986,078	\$1,025,521	\$1,025,521	\$0
10	0086-14-051	Loop 20	0.50 mi west of Milo interchange to 3000 feet east of Havana	Schematic, environmental, ROW-survey/mapping & PSE	2015	\$4,256,385	\$4,426,640	\$4,000,845	\$425,795
10	0922-33-076	Ln/Las Cruces Dr	At the intersection of FM 1472 and Flecha	Re-align intersection	2015	\$3,377,269	\$3,512,360	\$1,440,411	\$2,071,949
11	0922-00-060	VA	Districtwide	Upgrade bridge rail and MBGF	2015	\$3,059,036	\$3,181,397	\$2,500,000	\$681,397
12	0038-01-081	US 83	Cielito-Lindo Blvd (NB) to Espejo Molina Rd (NB)	Resurface of existing highway	2015	\$253,823	\$263,976	\$6,593,622	\$0
1,2M, 11	0086-14-066	Loop 20	0.45 m. east of International Blvd to 0.25 m. west of McPherson	Construction of interchange	2016	\$21,059,119	\$22,777,543	\$583,634	\$22,193,909
9	E-01	Manadas Creek Hike and Bike Trail, Phase III	United High School to Loop 20	Construct hike and bike trail	2016	\$886,846	\$959,213	\$959,213	\$0
10	0922-33-093	Calton Rd	Santa Maria Ave	Construct overpass	2016	\$23,309,669	\$25,211,738	\$12,926,124	\$12,285,614
10	0086-14-058	Loop 20	East of International Blvd to US 59/Loop 20 interchange	Schematic, environmental, ROW-survey/mapping & PSE	2016	\$3,880,224	\$4,196,850	\$3,500,000	\$696,850
11	0922-00-056	VA	Districtwide	Upgrade bridge rail and MBGF	2016	\$3,089,177	\$3,341,254	\$2,500,000	\$841,254
Local	0922-33-165	Hachar Parkway	FM 1472 to 0.1 m. E. of Beltway Parkway	Schematic, environmental for 5.07 miles of 5 lane rural roadway	2016	\$1,016,063	\$1,016,063	\$0	\$1,016,562
10 (CBI) Prop 1 (Cat 2) and 7	0922-33-166	Hachar Parkway	0.1 m. E. of Beltway Parkway to IH 35	Schematic, environmental, and preliminary engineering for a 5 lane rural roadway.	2016	\$300,000	\$300,000	\$300,000	\$60,000
2, 7, 12	2150-04-067	FM 1472 (Mines Rd.)	Killam Industrial Blvd to 0.3 miles north of Mueller Blvd.	Construct one additional northbound travel lane, and the design and partial reconstruction of the existing outside lane.	2016	\$5,782,000	\$5,782,000	\$1,300,000	\$0
8	0922-33-152	McPherson Rd	At IH 35	Construct overpass and approach roadways	2017	\$32,509,223	\$36,568,455	\$22,652,967	\$13,915,488
8	0922-33-153	McPherson Rd	At Calton Rd	Install raised median	2017	\$231,362	\$260,251	\$203,829	\$56,422
8	0922-33-154	McPherson Rd	At Del Mar Blvd	Install raised median and add right turn lane	2017	\$573,721	\$645,358	\$505,445	\$139,913
8	0922-33-154	McPherson Rd	At International Blvd	Install raised median	2017	\$347,446	\$390,830	\$306,098	\$84,732
9	E-02	Manadas Creek Hike and Bike Trail, Phase IV	McPherson Rd to North Central Park	Construct hike and bike trail	2017	\$335,305	\$377,172	\$377,172	\$0
11	0922-33-149	Chacon Creek	Eastwoods Park to US 59	Construction of a pedestrian trail at Chacon Creek in Laredo (Phase 3)	2017	\$1,786,746	\$2,009,846	\$1,410,000	\$599,846
9, local	0922-33-170	Zacated Creek Hike and Bike Trail	Zacate Creek	Design and construction of hike and bike trail.	2017	1,250,000*	\$1,416,278	\$1,000,000	\$250,000
7	0922-33-175	Hachar Parkway	FM 1472 to IH 35	PS&E and Row mapping for 5 lane rural road	2017	\$1,452,866	\$1,634,277	\$1,307,421	\$326,855
10-CBI	0922-14-081	IH 35	IH 35 and Loop 20	ITS for interchange facility over IH35	2017	\$924,556	\$1,040,000	\$800,000	\$240,000
2, 7	3	Loop 20	At IH 35	Construct ramps from IH 35 southbound to Loop 20 eastbound, and from Loop 20 westbound to IH 35 southbound	2018	\$44,200,000	\$51,707,748	\$9,276,602	\$42,431,146
9	E-03	Manadas Creek Hike and Bike Trail, Phase V	IH 35 to McPherson Rd	Construct hike and bike trail	2018	\$654,910	\$766,152	\$766,152	\$0
Local	0922-33-925	Hachar Parkway	FM 1472 to 0.1 m. E. of Beltway Parkway	Construction of 5.07 miles of 5 lane rural roadway	2018	\$20,880,841	\$23,499,354	\$0	\$23,499,354
7	0922-33-165	Hachar Parkway	FM 1472 to 0.1 m. E. of Beltway Parkway	Construction of 5.07 miles of 5 lane rural roadway	2018	\$33,080,222	\$41,831,778	\$21,437,521	\$20,394,207
9	E-04	Manadas Creek Hike and Bike Trail, Phase VI	Rio Grande River NW of water treatment plant	Construct hike and bike trail	2019	\$746,471	\$908,196	\$908,196	\$0
11	0922-00-951	VA	Districtwide	Upgrade bridge rail and MBGF	2019	\$3,089,178	\$3,758,457	\$2,500,000	\$1,258,457
7, 10	4/0086-14-058	Loop 20	International Blvd to US 59	Upgrade to interstate standards, including overpasses at Shiloh Dr, Del Mar Blvd, University Blvd, Jacaman Rd, and Airport	2020	\$391,400,000	\$495,245,864	\$116,608,517	\$378,637,347
11	0922-00-953	VA	Districtwide	Upgrade bridge rail and MBGF	2020	\$3,089,177	\$3,908,795	\$2,500,000	\$1,408,795
11	0922-00-955	VA	Districtwide	Upgrade bridge rail and MBGF	2021	\$3,089,178	\$4,065,147	\$2,500,000	\$1,565,147
11	0922-00-960	VA	Districtwide	Upgrade bridge rail and MBGF	2022	\$3,089,178	\$4,227,753	\$2,500,000	\$1,727,753
11	0922-00-970	VA	Districtwide	Upgrade bridge rail and MBGF	2023	\$3,089,178	\$4,396,863	\$2,500,000	\$1,896,863
7	0922-33-166	Hachar Parkway	0.1 m. E. of Beltway Parkway to IH 35	Construction of 5 lane rural road	2023	\$24,190,742	\$34,430,909	\$17,152,535	\$17,278,374
Local	0922-33-166	Hachar Parkway	0.1 m. E. of Beltway Parkway to IH 35	Construction of 3.33 miles of 5 lane rural roadway	2025	\$24,444,444	\$28,193,851	\$0	\$28,193,851
7	X-06	IH 35	At Loop 20	Construct ramp from Loop 20 Westbound to IH 35 Northbound	2037	\$35,520,000	\$87,546,696	\$7,454,863	\$80,091,833
7	X-09	IH 35	At Loop 20	Construct ramp from Loop 20 Eastbound to IH 35 Southbound	2039	\$35,520,000	\$94,690,506	\$7,454,863	\$87,235,643
Total						\$105,865,845	\$1,028,770,498	\$270,588,385	\$759,923,979

Table 12-12 Category 7 Roadway Projects

Addition

CSJ 0922-33-175 (Hachar –Reuthinger Road) FM 1472 to IH 35 PS&E for construction 5 lane rural roadway

Description: : The project will provide for the PS&E and ROW mapping for 5 lane rural roadway, from FM 1472 to IH35. The roadway is intended to be extended toward the east until it intersect with IH 35 and will thus ultimately provide an alternate east west connection between Mines Road and IH 35.

Letting Year: 2017

Total Project Cost \$1,452,866

YOE Cost: \$-1,634,777

Programmed Amount

Category 7: \$1,307,421

Other Amount: \$-326,855

Funding: -- Federal /local funds

Environmental Impacts and Environmental

Justice- The project passes through 100-year flood plains, but it is not near low income areas or cultural resources



Table 12-12 Category 7 Roadway Projects

REVISION

CSJ 0922-33-925 (Hachar Parkway) FM 1472 to 0.1Mi East of Beltway Pkwy: 5 lane rural roadway Construction

Description: + The project will provide for the construction of a 5 lane rural roadway, from FM 1472 to 0.1 miles east of Beltway Parkway, 5.07 miles in length. The roadway is intended to be extended toward the east until it intersect with IH 35 and will thus ultimately provide an alternate east west connection between Mines Road and IH 35.

Letting Year: 2018

Total Project Cost: \$20,890,841

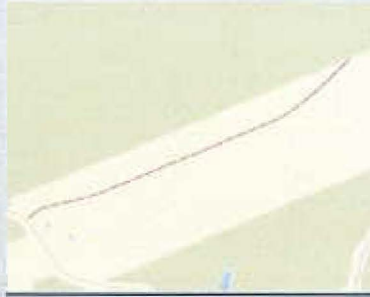
YOE Cost: \$ 23,499,354

Programmed Amount: \$ 20,890,840

Other Amount: \$ 2,608,513

Funding: SIB Loan/local funds

Environmental Impacts and Environmental Justice The project passes through 100-year flood plains, but it is not near low income areas or cultural resources



CSJ 0922-33-165 (Hachar - Reuthinger Road) FM 1472 to 0.1Mi East of Beltway Pkwy: 5 lane rural roadway Construction

Description: : The project will provide for the construction, engineering and contingencies of a 5 lane rural roadway, from FM 1472 to 0.1 miles east of Beltway Parkway, 5.07 miles in length. The roadway is intended to be extended toward the east until it intersect with IH 35 and will thus ultimately provide an alternate east west connection between Mines Road and IH 35.

Letting Year: 2018

Total Project Cost: \$33,060,222

YOE Cost: \$ -41,831,728

Programmed Amount

Category 7: \$21,437,521

Other Amount: \$ -20,394,207

Funding: -- Federal /local funds

Environmental Impacts and Environmental Justice The project passes through 100-year flood plains, but it is not near low income areas or cultural resources



Table 12-12 Category 7 Roadway Projects

REVISION

CSJ 0922-33-950 (Hachar Parkway) From 0.1 Mi E of Beltway Pkwy to IH 35: 5 lane rural roadway Engineering and Construction

Description: The project will provide for the engineering and construction of a 3.55 mile, 5 lane rural roadway, from 0.1 miles east of Beltway Parkway to IH-35. The road is intended as the extension of Hachar Parkway and will provide an alternate east-west connection between FM 1472 and IH-35.

Letting: FY 2025

Total Cost: \$24,544,444

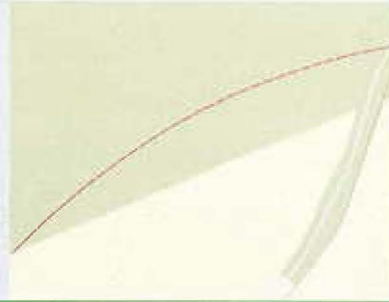
YOE Cost: \$-28,193,851

Programmed Amount: \$-28,193,851

Other Amount: \$-0

Funding: Local funds

Environmental Impacts and Environmental Justice The project passes through 100-year flood plains.



CSJ 0922-33-166 (Hachar Parkway) From 0.1 Mi E of Beltway Pkwy to IH 35: 5 lane rural roadway Engineering and Construction

Description: The project will provide for the engineering, contingencies and construction of a 3.55 mile, 5 lane rural roadway, from 0.1 miles east of Beltway Parkway to IH-35. The road is intended as the extension of Hachar Parkway and will provide an alternate east west connection between FM 1472 and IH 35.

Letting: FY 2023

Total Cost: \$24,190,742

YOE Cost: \$-34,430,969

Programmed Amount:

Category 7 \$-17,152,535

Other Amount: \$-17,278,434

Funding: --Federal/Local funds

Environmental Impacts and Environmental Justice The project passes through 100-year flood plains.

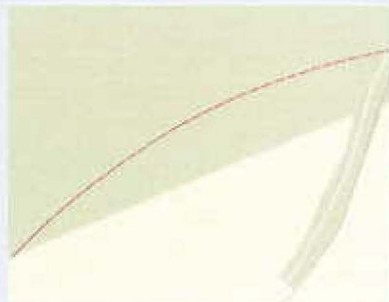


Table 12-15 Category 10 Roadway Projects

CSJ 0086-14-081 Loop 20 – 1.4 mi W of IH 35 to 0.6 Mi W of McPherson Rd – ITS portion of interchange facility over IH35

Description: : The project is intended to provide for the construction and engineering of the ITS portion of an interchange facility over IH 35, from 1.400 miles west of IH 35 to 0.600 miles west of McPherson Road.

Letting Year: 2017

Total Project Cost \$924,556

YOE Cost: \$--1,040,000

Programmed Amount

Category 10: \$800,000

Other Amount: \$--240,000

Funding:-- Federal /local funds

Environmental Impacts and Environmental Justice- The project passes through 100-year flood plains, but it is not near low income areas or cultural resources



Figure 12-1: Roadway and Bicycle and Pedestrian Projects

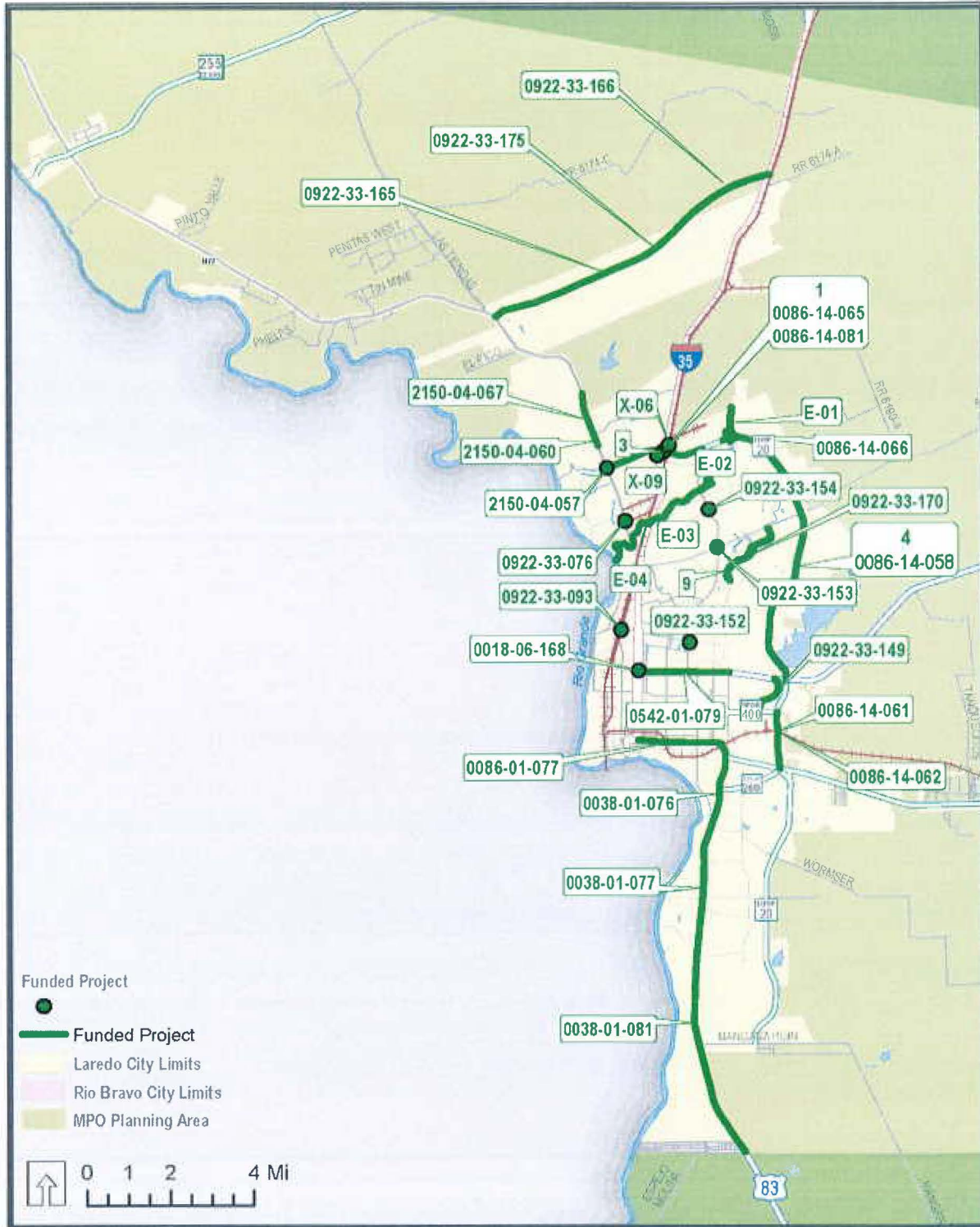


Table 13-1: Federally Funded Projects Environmental Assessment Results

ID	Roadway	Buffer Distance (Ft)	100-YR Flood Plain	Water Bodies	Airport	Cemetery	Historic Site	Medical Facility	Park and Rec. Facility	School
0086-14-061	Loop 20	400	<input checked="" type="checkbox"/>							
1, 0086-14-065	Loop 20	500	<input checked="" type="checkbox"/>							
0086-14-066	Loop 20	500	<input checked="" type="checkbox"/>	<input checked="" type="checkbox"/>						
3	Loop 20	500	<input checked="" type="checkbox"/>							
4, 0086-14-950, 0086-14-058	Loop 20	400	<input checked="" type="checkbox"/>	<input checked="" type="checkbox"/>	<input checked="" type="checkbox"/>				<input checked="" type="checkbox"/>	<input checked="" type="checkbox"/>
X-06	IH 35 at Loop 20	500	<input checked="" type="checkbox"/>							
X-09	IH 35 at Loop 20	500	<input checked="" type="checkbox"/>							
0922-33-076	City Street	500	<input checked="" type="checkbox"/>							
0922-33-093	City Street	500								
0086-14-062	Loop 20	400	<input checked="" type="checkbox"/>							
2150-04-067	FM 1472	400								
0922-33-165	Hachar Parkway	400	<input checked="" type="checkbox"/>							
0922-33-166	Hachar Parkway	400	<input checked="" type="checkbox"/>							
0922-33-175	Hachar Parkway	400	<input checked="" type="checkbox"/>							

Environmental Mitigation Activities

It is stated in the laws governing the federal transportation planning process that “long-range transportation plans should include a discussion of types of potential environmental mitigation activities and potential areas to carry out these activities, including activities that may have the greatest potential to restore and maintain the environmental functions affected by the plan”. In addition, MAP-21 requires that potential environmental mitigation activities be developed in consultation with federal, state, and tribal wildlife, land management, and regulatory (resource) agencies. The Laredo MPO is committed to minimizing and mitigating the negative effects of transportation projects on the natural and built environments. In doing so, the MPO recognizes that not every project will require the same type or level of mitigation. Some projects, such as new roadways and new interchanges, involve major construction with considerable earth disturbance. Others, like intersection improvements, street lighting, and resurfacing projects, involve minor construction and minimal, if any, earth disturbance. The mitigation efforts used for a project should depend upon how severe the impact on environmentally sensitive areas is expected to be. To the extent possible, transportation projects should minimize off-site disturbance in

Figure 13-1: Natural Resources and Federally Funded Projects

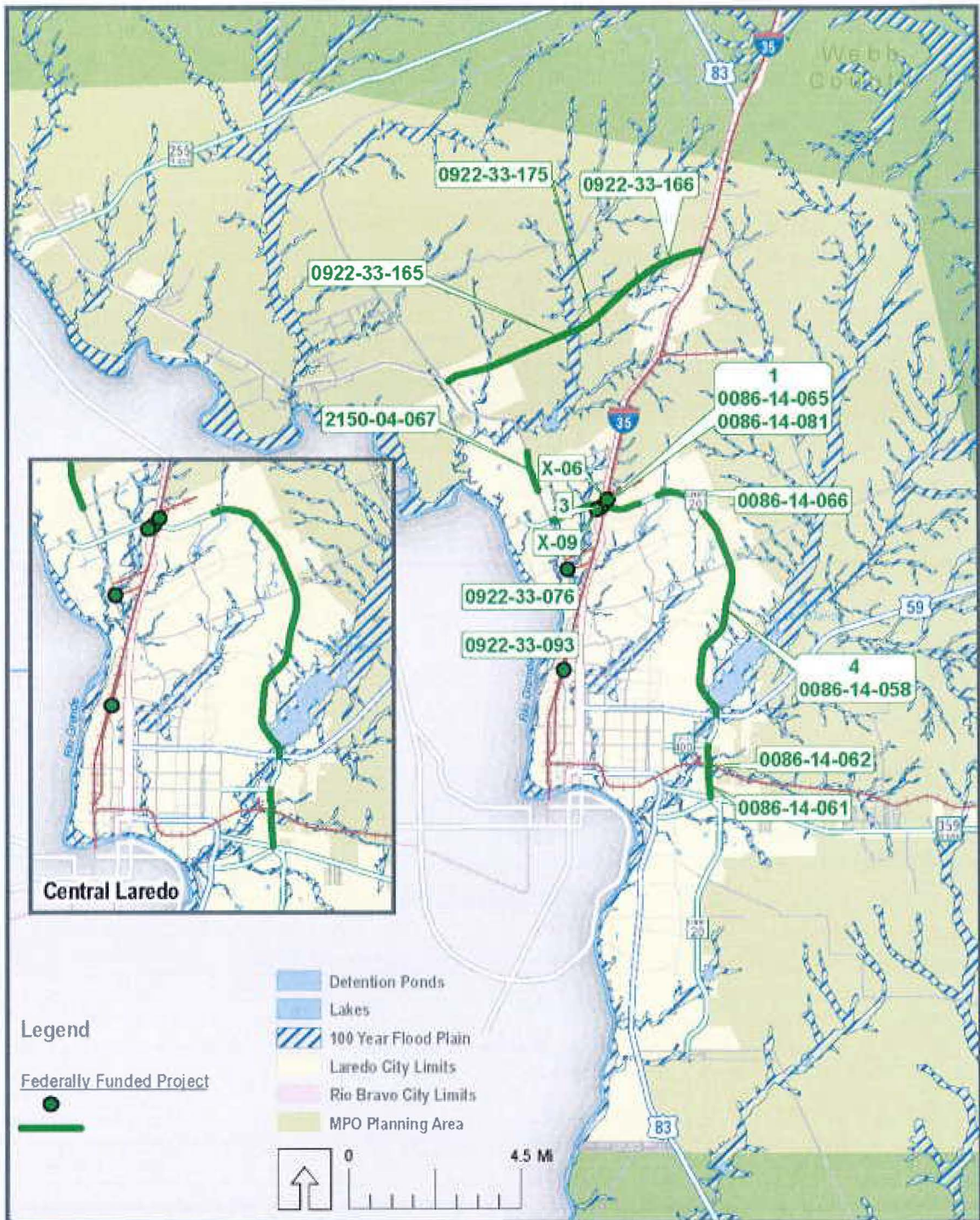
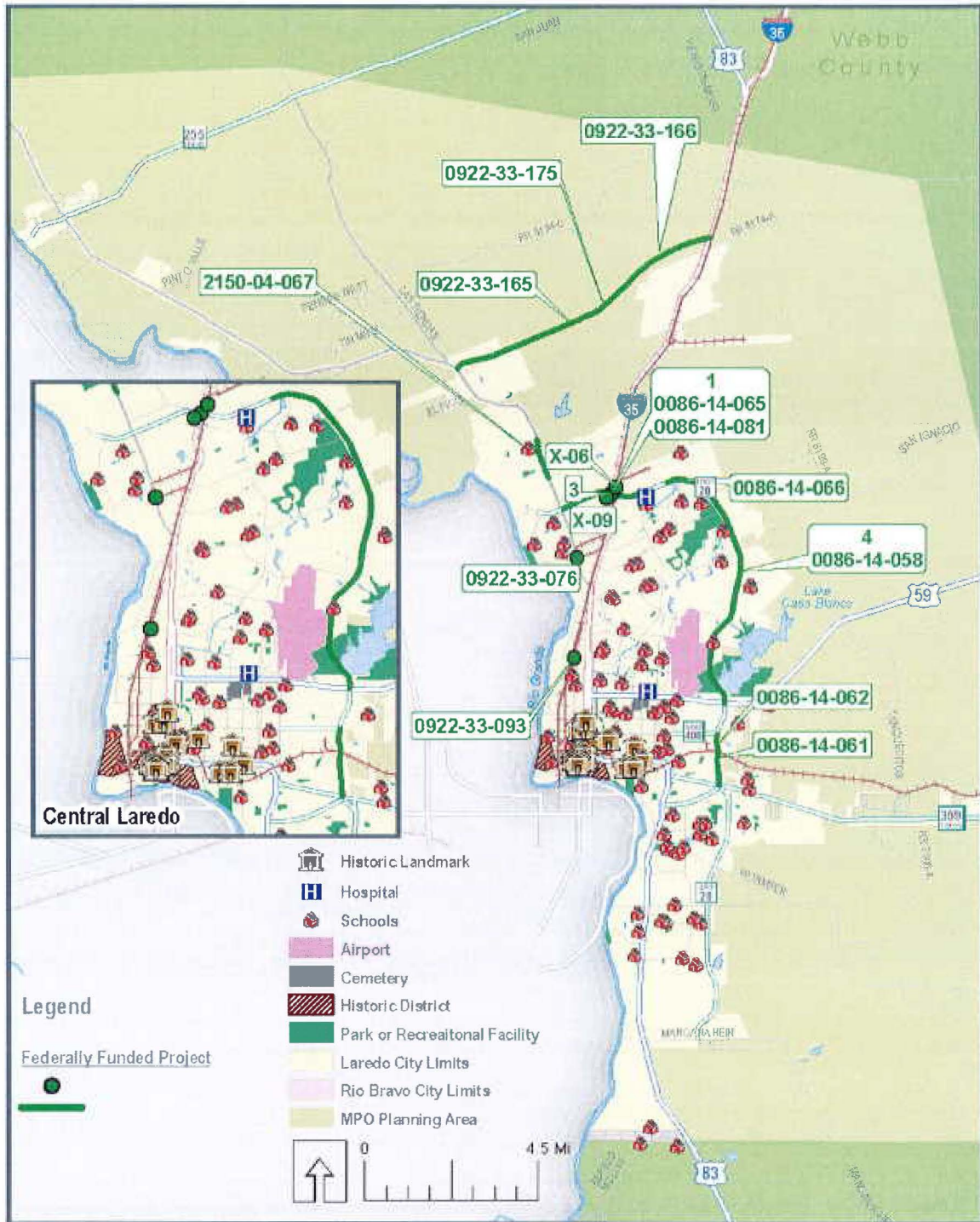


Figure 13-2: Cultural Resources and Federally Funded Projects



systems, electricity, paved roads, and safe and sanitary housing. Residents of colonias are mostly low-income individuals seeking access to affordable living accommodations.

In order to determine which Census tracts are considered low income in the Laredo region, the U.S. Census data that shows the number of households in poverty and total households in Census tracts in 2012 were used. A Census tract is considered to be a low income area if its percentage of households in poverty is higher than regional average.

Table 13-3 identifies which projects are located in Environmental Justice areas, while **Figure 13-3** and **Figure 13-4** present the locations of Environmental Justice populations and the priority projects within this MTP.

Table 13-3: Federally Funded Projects and Environmental Justice Population

<i>ID</i>	<i>Roadway</i>	<i>Limits</i>	<i>Buffer Distance (Ft)</i>	<i>Low Income Census Tract</i>	<i>Colonia</i>
0086-14-061	Loop 20	Clark Blvd to SH 359	400	<input checked="" type="checkbox"/>	
0086-14-062	Loop 20	Clark Blvd to SH 359	400	<input checked="" type="checkbox"/>	
1, 0086-14-065, 0086-14-081	Loop 20	At IH 35	500		
0086-14-066	Loop 20	At International Blvd	500		
3	Loop 20	At IH 35	500		
4, 0086-14-950, 0086-14-058	Loop 20	International Blvd to US 59	400		
X-06	IH 35	At Loop 20	500		
X-09	IH 35	At Loop 20	500		
0922-33-076	City Street	At the intersection of FM 1472 and Flecha Ln/Las Cruces Dr	500	<input checked="" type="checkbox"/>	
0922-33-093	City Street	At the intersection of Calton Rd and Santa Maria Ave	500	<input checked="" type="checkbox"/>	
0086-14-062	Loop 20	1.06 mi south of Spur 400 to Spur 400	400	<input checked="" type="checkbox"/>	
2150-04-067	FM 1472	Killam Industrial Blvd to .3 Mi North of Muller Memorial Blvd	400		
0922-33-175	Hachar Parkway	FM 1472 to IH35 West Frontage Road	400		
0922-33-165	Hachar Parkway	FM 1472 to .1 Mi East of Beltway Parkway	400		
0922-33-166	Hachar Parkway	.1 Mi East of Beltway Parkway to IH35 Frontage Rd	400		

Figure 13-3: Low Income Areas and Federally Funded Projects

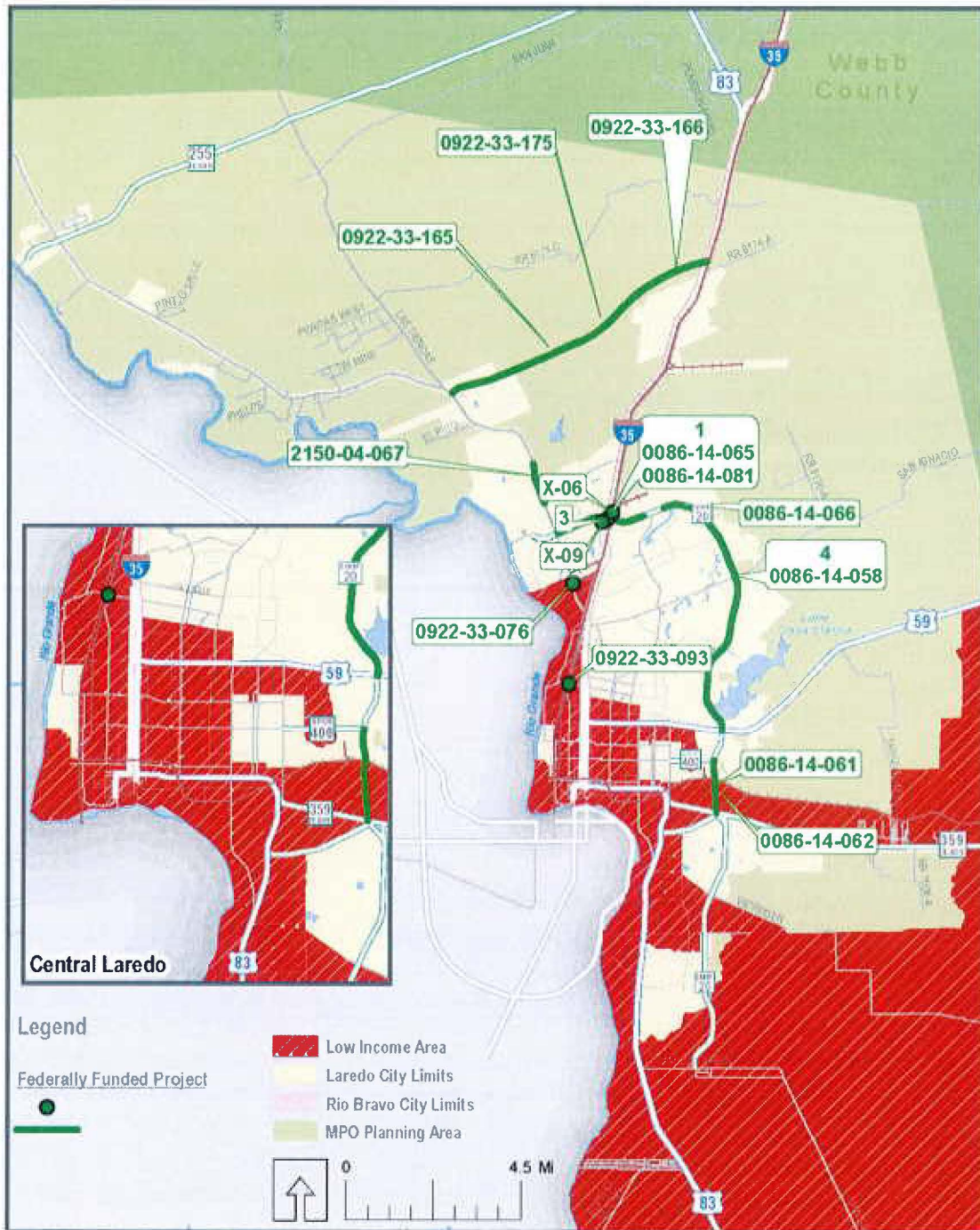
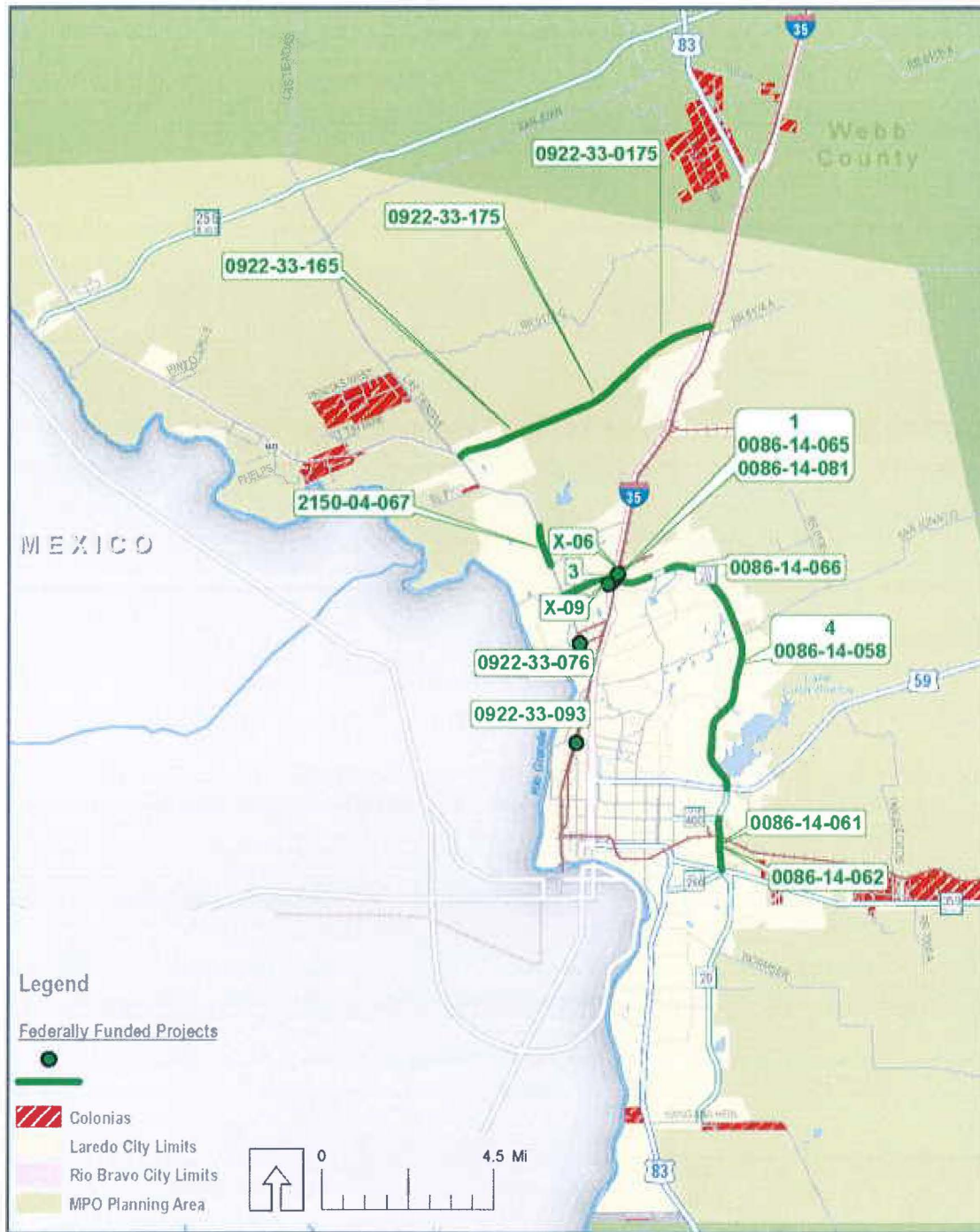


Figure 13-4: Colonias and Federally Funded Projects



0922-33-166

Project		Hachar Loop Construction Beltway Parkway to I-35(interim section - 5 lane rural) Scheduled letting: September 2022 - FY2023			
LATEST ESTIMATE - 10/1/15 - DEC					
ROW			\$13,538,062.00		
Construction Cost			\$17,826,712.81		
Construction Engineering	4.50%		\$802,202.08		
Contingency	6.50%		\$1,158,736.33		
Indirect	6.20%		\$1,105,256.19		
Total Project Cost			\$34,430,969.41		
YOE Cost*			\$21,440,668.82		
PROPOSED PROGRAMMING					
Funding by Category	Phase	Total	Federal	State	Local
Category 7	Construction	\$21,440,668.82	17,152,535.06		3,430,507.01
TOTAL PROGRAMMED FUNDS		21,440,668.82	17,152,535.06		3,430,507.01
* based off of the latest construction estimate , requires negotiation and approval of fee by TxDOT. Includes Construction Engineering and Inspection (Local Let). Includes escalation.					

CST 0922-33-165

Project		Hachar Loop Construction FM 1472 to Beltway Parkway (interim section - 5 lane rural)			
		Scheduled letting: September 2019 - FY2020			
LATEST ESTIMATE - 10/1/15 - DEC					
ROW			\$13,538,062.00		
Construction Cost			\$24,141,353.65		
Construction Engineering	4.50%		\$1,086,360.91		
Contingency	6.50%		\$1,569,187.99		
Indirect	6.20%		\$1,496,763.93		
Total Project Cost			\$41,831,728.48		
YOE Cost*			\$26,796,902.55		
PROPOSED PROGRAMMING					
Funding by Category	Phase	Total	Federal	State	Local
Category 7	Construction	\$26,796,902.55	21,437,522.04		4,287,504.41
TOTAL PROGRAMMED FUNDS		26,796,902.55	21,437,522.04		4,287,504.41
* based off of the latest construction estimate , requires negotiation and approval of fee by TxDOT. Includes Construction Engineering and Inspection (Local Let).					

0922-33-175

Project		Hachar Loop PS&E from FM 1472 to I-35 (interim section - 5 lane rural)			
		Scheduled letting: February 2017			
LATEST ESTIMATE - 10/1/15 - DEC					
ROW			\$13,538,062.00		
Construction Cost			\$41,968,066.46		
Construction Engineering	4.50%		\$1,888,562.99		
Contingency	6.50%		\$2,727,924.32		
Indirect	6.20%		\$2,602,020.12		
PS&E *	3.89%		\$1,634,277.42		
Total Project Cost			\$64,358,913.31		
YOE Cost			\$1,634,277.42		
PROPOSED PROGRAMMING					
Funding by Category	Phase	Total	Federal	State	Local
Category 7	Design / PS&E	1,634,277.42	1,307,421.94		261,484.39
TOTAL PROGRAMMED FUNDS		1,634,277.42	1,307,421.94	0.00	261,484.39
CBI FUNDS to Redistribute					
* based off of the latest construction estimate , requires negotiation and approval of fee by TxDOT. Assumes roadway may be taken on system.					

DRAFT 2017 UTP PLANNING TARGETS

Category 7: Metropolitan Mobility/Rehabilitation (STP-MM) Funding Summary											
District/MPO/Division	FY 2017	FY 2018	FY 2019	FY 2020	FY 2021	FY 2022	FY 2023	FY 2024	FY 2025	FY 2026	TOTALS
(ABC) Abilene MPO	-	-	-	-	-	-	-	-	-	-	\$ -
(AMA) Amarillo MPO	-	-	-	-	-	-	-	-	-	-	\$ -
(ATL) Texarkana MPO	-	-	-	-	-	-	-	-	-	-	\$ -
(AJS) CAMPO TMA	20,210,000	20,370,000	32,150,000	35,100,000	\$35,570,000	\$38,020,000	\$38,440,000	\$36,820,000	\$37,140,000	\$37,400,000	\$27,220,000
(BMT & HOU) HGAC TMA	111,140,000	123,180,000	128,040,000	133,550,000	\$135,350,000	\$137,060,000	\$138,660,000	\$140,100,000	\$141,340,000	\$142,320,000	\$ 1,330,730,000
(BMT) JHCRTS MPO	-	-	-	-	-	-	-	-	-	-	\$ -
(BRY) Bryan-College Station MPO	-	-	-	-	-	-	-	-	-	-	\$ -
(CRP) Corpus Christi TMA	6,860,000	7,600,000	7,900,000	8,240,000	\$8,380,000	\$8,480,000	\$8,560,000	\$8,650,000	\$8,730,000	\$8,790,000	\$ 82,150,000
(DAL, FTW & PAR) NCTCOG TMA	117,890,000	130,400,000	135,540,000	141,370,000	\$143,280,000	\$145,000,000	\$146,780,000	\$148,310,000	\$149,620,000	\$150,660,000	\$ 1,408,700,000
(ELP) El Paso TMA	28,520,000	18,350,000	19,080,000	19,900,000	\$20,180,000	\$20,420,000	\$20,660,000	\$20,870,000	\$21,060,000	\$21,290,000	\$ 211,250,000
(LRD) Laredo TMA	5,050,000	5,500,000	5,830,000	6,070,000	\$6,150,000	\$6,230,000	\$6,300,000	\$6,370,000	\$6,430,000	\$6,470,000	\$ 60,500,000
(LBB) Lubbock TMA	1,240,000	8,490,000	5,860,000	6,110,000	\$6,200,000	\$6,260,000	\$6,350,000	\$6,410,000	\$6,470,000	\$6,520,000	\$ 60,930,000
(ODA) Midland-Odessa TMA	-	-	-	-	-	-	-	-	-	-	\$ -
(PAR) Sherman-Denison MPO	-	-	-	-	-	-	-	-	-	-	\$ -
(PHR) Harlingen-San Benito MPO	-	-	-	-	-	-	-	-	-	-	\$ -
(PHR) Hidalgo County TMA	19,820,000	17,320,000	18,030,000	18,770,000	\$18,030,000	\$18,270,000	\$19,400,000	\$19,700,000	\$19,870,000	\$20,010,000	\$ 187,080,000
(PHR) Brownsville TMA	10,160,000	5,170,000	5,360,000	5,610,000	\$5,680,000	\$5,760,000	\$5,830,000	\$5,880,000	\$5,930,000	\$5,970,000	\$ 61,370,000
(SJT) San Angelo MPO	-	-	-	-	-	-	-	-	-	-	\$ -
(SAT) AAMPPO	60,890,000	41,760,000	43,420,000	45,280,000	\$45,900,000	\$46,480,000	\$47,020,000	\$47,510,000	\$47,830,000	\$48,270,000	\$ 474,290,000
(TYL) Tyler MPO	-	-	-	-	-	-	-	-	-	-	\$ -
(TYL) Longview MPO	-	-	-	-	-	-	-	-	-	-	\$ -
(WAC) Killeen-Temple TMA	4,670,000	5,170,000	5,370,000	5,610,000	\$5,680,000	\$5,750,000	\$5,820,000	\$5,880,000	\$5,930,000	\$5,970,000	\$ 56,850,000
(WAC) Waco MPO	-	-	-	-	-	-	-	-	-	-	\$ -
(WFS) Wichita Falls MPO	-	-	-	-	-	-	-	-	-	-	\$ -
(YKM) Victoria MPO	-	-	-	-	-	-	-	-	-	-	\$ -
Statewide	-	-	-	-	-	-	-	-	-	-	\$ -
Statewide Unallocated	-	-	-	-	-	-	-	-	-	-	\$ -
Total	\$ 382,810,000	\$ 384,430,000	\$ 408,570,000	\$ 425,620,000	\$ 431,380,000	\$ 436,820,000	\$ 441,900,000	\$ 446,500,000	\$ 450,450,000	\$ 453,680,000	\$ 4,280,040,000

Notes:
Category 7 distributed to MPO's with urbanized area population over 200,000.

2017-2020 Laredo TIP - Revision 1 - Project Summaries

ADD

0086-14-065 LP 20 Phase C Let 1/17 (FY 17)

From: 0.330 Miles W of IH 35
 To: 0.160 Miles W of McPherson
 For the construction of an interchange facility over IH 35

PE	1,842,400	FUNDS	Federal	State	Local	LC	TOTAL
Construction	38,100,000	10-CBI	30,480,000	7,620,000		0	0 38,100,000
Const Eng	1,763,440	11	1	0		0	0 1
Conting	1,124,240	TOTAL:					38,100,000

0086-14-081 LP 20 Phase C, E Let 1/17 (FY 17)

From: 1.400 Miles W of IH 35
 To: 0.600 Miles W of McPherson
 ITS PORTION of an interchange facility over IH 35

PE	73,500	FUNDS	Federal	State	Local	LC	TOTAL
Construction	1,000,000	10-CBI	800,000	200,000		0	0 1,000,000
Const Eng	70,350	11	1	0		0	0 1
Conting	44,850	TOTAL:					1,000,000

0922-33-175 Hachar/Reuthinger Phase E Let 2/17 (FY 17)

From: FM 1472
 To: IH 35 West Frontage Road
 PS&E including ROW Mapping only

PE	80,079	FUNDS	Federal	State	Local	LC	TOTAL
Construction	1,634,277	CAT 7	1,307,421		0 326,855		0 1,634,277
Const Eng	79,916						
Conting	18,467						

CHANGES

0922-33-165 CS Phase C, E Let 9/18 (FY19)

From: FM 1472
 To: 0.100 Miles E of Beltway Parkway
 Construction of rural highway

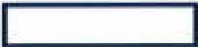
PE	1,313,048	FUNDS	Federal	State	Local	LC	TOTAL
Construction	26,796,902	CAT 7	21,437,521		0 5,359,380		0 26,796,902
Const Eng	1,313,048						
Conting	334,961						

0922-33-076 CS Phase C, E Let 8/17 (FY 17)
 From: Intersection of FM 1472 and Flecha
 To: 0.174 Miles East of FM 1472
 Realignment of Flacha Ln/Las Cruces along FM 1472

PE	91,360	FUNDS	Federal	State	Local	LC	TOTAL
ROW	1,250,000	10-Misc	1,440,411		0	360,103	0 1,800,514
Construction	1,864,480	Local		0	0	0	246,685 246,685
Const Eng	91,360	TOTAL:					2,047,199
Conting	23,306						
Indirect	90,054						

0922-33-093 CS Phase C, E, R Let 8/17 (FY 17)
 From: 0.25 M East of Calton/ San Maria Interchange
 To: 0.25 M West of Calton/ San Maria Interchange
 Construction of a Grade separation at Calton/San Maria Intersection

PE	830,293	FUNDS	Federal	State	Local	LC	TOTAL
ROW	3,450,000	10-Misc	12,926,124		0	1,893,585	0 14,819,709
Construction	16,944,765	Local		0	0	0	8,194,433 8,194,433
Const Eng	794,709	TOTAL:					23,014,142
Conting	506,648						





**LAREDO URBAN TRANSPORTATION STUDY
ACTION ITEM**

DATE: 7-18-16	SUBJECT: RESOLUTION Receive public testimony and approve a Resolution 2016-10 adopting the proposed revision(s) of the 2017-2020 Transportation Improvement Program (TIP): <ol style="list-style-type: none"> 1. Addition of project CSJ 0086-14-065 intended to construct an interchange facility over IH35, from 0.330 miles west of IH 35 to 0.160 miles west of McPherson Road, with an estimated project cost of \$38,100,000. Proposed project letting date is FY 2017 (January 2017). 2. Addition of project CSJ 0086-14-081 intended to provide for the constructing and engineering of the ITS portion of an interchange facility over IH35, from 1.400 miles west of IH 35 to 0.600 miles west of McPherson Road, with an estimated project cost of \$1,000,000. Proposed project letting date is FY 2017 (January 2017). 3. Addition of a project CSJ 0922-33-175 intended to provide funds for PS&E (including right-of-way mapping) for the Hachar-Reuthinger Road Project from FM 1472 to IH35 with an estimated project cost of \$1,634,277. Proposed letting date is February 2017 (FY 17). 4. Revision of project CSJ 0922-33-165 intended to provide for construction, engineering, and contingencies for the Hachar-Reuthinger Road Project, from FM 1472 to Beltway Parkway. Purpose of amendment is to revise funding amounts from \$22,936,054 in local funds to \$21,437,521 in Category 7 funds and \$5,359,380 in local funds. Proposed letting date is FY 2019 (September 2018). 5. Revision of project CSJ 0922-33-076 intended to realign Flecha Lane and Las Cruces along FM 1472. Purpose of amendment is to revise the existing funding amounts. Funding amounts will be adjusted from \$1,372,973 Category 10 funds and \$707,412 local funds to \$1,440,411 in Category 10 funds, and \$606,788 local funds. 6. Revision of project CSJ 0922-33-093 intended to construct a grade separation at the Calton Road/Santa Maria intersection. Purpose of amendment is to revise the existing funding amounts. Funding amounts will be adjusted from \$10,139,817 Category 10 funds and \$11,938,307 local funds to \$12,926,124 Category 10 funds, and 10,088,018 local funds. <p style="text-align: right;">TIP 17-20/REV. 1</p>	
INITIATED BY: Staff		STAFF SOURCE: Nathan Bratton, MPO Director
PREVIOUS ACTION: On 6-20-16, the Policy Committee initiate a 10 day public review and comment period.		
BACKGROUND: See Attachment A- Project Summaries and Attachment B – 2017-2020 Financial Summary for full revision details.		
COMMITTEE RECOMMENDATION: Approval		STAFF RECOMMENDATION: Approval

RESOLUTION NO. MPO 2016-10

BY THE LAREDO URBAN TRANSPORTATION STUDY
METROPOLITAN PLANNING ORGANIZATION POLICY COMMITTEE

ADOPTING THE 2017-2020 TRANSPORTATION IMPROVEMENT PROGRAM (TIP)

WHEREAS, the Laredo Urban Transportation Study (LUTS), the designated Metropolitan Planning Organization (MPO) for the Laredo Urban Area, has reviewed the proposed revision(s) of the 2017-2020 Transportation Improvement Program (TIP); and,

WHEREAS, the Laredo Urban Transportation Study finds that the proposed revision(s) of the 2017-2020 Transportation Improvement Program (TIP) meets the high priority improvements necessary for the LUTS area;

NOW THEREFORE BE IT RESOLVED, that the Laredo Urban Transportation Study, as the designated Metropolitan Planning Organization for the Laredo Urban Area, adopted the proposed 2017-2020 Transportation Improvement Program (TIP), which are attached hereto and made a part hereof for all purpose:

We certify that the above resolution was adopted on July 18, 2016, at a public meeting of the Policy Committee of the Laredo Urban Transportation Study.

Honorable Pete Saenz
Mayor of Laredo and Chairperson of the
MPO Policy Committee

Nathan Bratton
MPO Director

Melisa Montemayor
Laredo District Administrator

2017-2020 TIP LOCATIONS OF PROJECTS

TIP 2017-2020 PROJECTS

ORIGINAL PROJECTS

CSJ: 0922-33-170
ROADWAY: ZACATE CREEK
FROM: .18 Mi N of Jacarón Rd
TO: E Del Mar Blvd
WORK: Design & construction of 10,250 linear feet of trail along Zacate Creek
TOTAL COST: \$1,317,011
FY 2017

CSJ: 0922-33-076
ROADWAY: FLECHA LN
FROM: Intersection of Flecha Ln/ FM1472
TO: .174MI east of FM1472
WORK: The realignment of Flecha Ln/Las Cruces along FM1472.
TOTAL COST: \$3,457,520
FY 2018

CSJ: 0922-33-093
ROADWAY: CALTON RD
FROM: .25MI E of Calton/ Santa Maria Intersection
TO: .25MI W of Calton/ Santa Maria Intersection
WORK: Construction of a grade separation at Calton/ Santa Maria Intersection
TOTAL COST: \$23,349,576
FY 2018

CSJ: 0922-33-165
ROADWAY: HACHAR PARKWAY
FROM: FM 1472
TO: .1 MI E of Bellway Parkway
WORK: Preliminary engineering of 5 lane rural highway
TOTAL COST: \$24,041,180
FY 2019

REVISION 1

UPDATED FUNDING & TOTAL COST
CSJ: 0922-33-076
ROADWAY: FLECHA LN
TOTAL COST: \$2,047,199

UPDATED FUNDING & TOTAL COST
CSJ: 0922-33-093
ROADWAY: CALTON RD
TOTAL COST: \$23,014,142

UPDATED FUNDING & TOTAL COST
CSJ: 0922-33-165
ROADWAY: HACHAR PARKWAY
TOTAL COST: \$26,796,902
FY 2017

ADDED PROJECT
CSJ: 0086-14-065
ROADWAY: LOOP 20
FROM: 0.330 Mi W of IH35
TO: 0.160 Mi W of McPherson Rd
WORK: Construction of Interchange facility of IH35
TOTAL COST: \$37,600,000
FY 2017

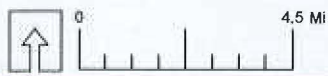
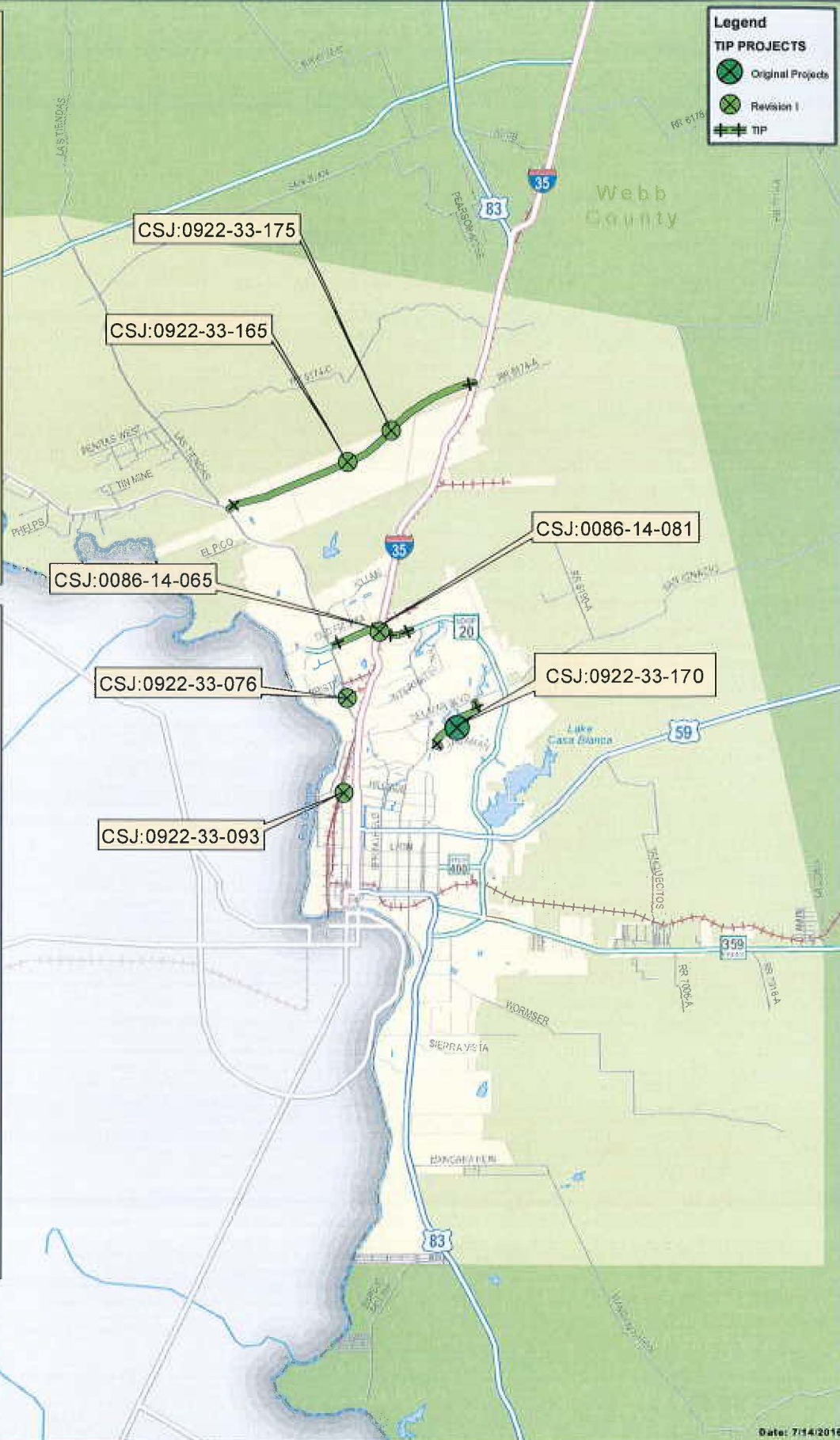
ADDED PROJECT
CSJ: 0086-14-081
ROADWAY: LOOP 20
FROM: 1.400 Mi W of IH35
TO: 0.600 Mi W of McPherson Rd
WORK: ITS Portion of Interchange facility over IH35
TOTAL COST: \$1,500,000
FY 2017

ADDED PROJECT
CSJ: 0922-33-175
ROADWAY: HACHAR PARKWAY
FROM: FM 1472
TO: IH35 West Frontage Rd
WORK: PS&E including ROW mapping only
TOTAL COST: \$1,634,277
FY 2018

Legend

TIP PROJECTS

- Original Projects
- Revision 1
- TIP



2017-2020 Laredo TIP - Revision 1 - Project Summaries

ADD

0086-14-065 LP 20 Phase C Let 1/17 (FY 17)
 From: 0.330 Miles W of IH 35
 To: 0.160 Miles W of McPherson
 For the construction of an interchange facility over IH 35

PE	1,842,400	FUNDS	Federal	State	Local	LC	TOTAL
Construction	38,100,000	10-CBI	30,480,000	7,620,000		0	0 38,100,000
Const Eng	1,763,440	11	1	0	0	0	0 1
Conting	1,124,240	TOTAL:					38,100,000

0086-14-081 LP 20 Phase C, E Let 1/17 (FY 17)
 From: 1.400 Miles W of IH 35
 To: 0.600 Miles W of McPherson
 ITS PORTION of an interchange facility over IH 35

PE	73,500	FUNDS	Federal	State	Local	LC	TOTAL
Construction	1,000,000	10-CBI	800,000	200,000		0	0 1,000,000
Const Eng	70,350	11	1	0	0	0	0 1
Conting	44,850	TOTAL:					1,000,000

0922-33-175 Hachar/Reuthinger Phase E Let 2/17 (FY 17)
 From: FM 1472
 To: IH 35 West Frontage Road
 PS&E including ROW Mapping only

PE	80,079	FUNDS	Federal	State	Local	LC	TOTAL
Construction	1,634,277	CAT 7	1,307,421		0 326,855		0 1,634,277
Const Eng	79,916						
Conting	18,467						

CHANGES

0922-33-165 CS Phase C, E Let 9/18 (FY19)
 From: FM 1472
 To: 0.100 Miles E of Beltway Parkway
 Construction of rural highway

PE	1,313,048	FUNDS	Federal	State	Local	LC	TOTAL
Construction	26,796,902	CAT 7	21,437,521		0 5,359,380		0 26,796,902
Const Eng	1,313,048						
Conting	334,961						

0922-33-076 CS Phase C, E Let 8/17 (FY 17)
 From: Intersection of FM 1472 and Flecha
 To: 0.174 Miles East of FM 1472
 Realignment of Flacha Ln/Las Cruces along FM 1472

PE	91,360	FUNDS	Federal	State	Local	LC	TOTAL
ROW	1,250,000	10-Misc	1,440,411		0	360,103	0 1,800,514
Construction	1,864,480	Local		0	0	0	246,685 246,685
Const Eng	91,360	TOTAL:					2,047,199
Conting	23,306						
Indirect	90,054						

0922-33-093 CS Phase C, E, R Let 8/17 (FY 17)
 From: 0.25 M East of Calton/ San Maria Interchange
 To: 0.25 M West of Calton/ San Maria Interchange
 Construction of a Grade separation at Calton/San Maria Intersection

PE	830,293	FUNDS	Federal	State	Local	LC	TOTAL
ROW	3,450,000	10-Misc	12,926,124		0	1,893,585	0 14,819,709
Construction	16,944,765	Local		0	0	0	8,194,433 8,194,433
Const Eng	794,709	TOTAL:					23,014,142
Conting	506,648						





MPO / Laredo District - 22
Initial FY 2017 - 2020 Transportation Improvement Program

Funding by Category

Category	Description	FY 2017		FY 2018		FY 2019		FY 2020		Total FY 2017 - 2020	
		Programmed	Authorized	Programmed	Authorized	Programmed	Authorized	Programmed	Authorized	Programmed	Authorized
1	Preventive Maintenance and Rehabilitation	\$0	\$0	\$0	\$0	\$0	\$0	\$0	\$0	\$0	\$0
2M or 2U	Urban Area (Non-TMA) Corridor Projects	\$0	\$0	\$0	\$0	\$0	\$0	\$0	\$0	\$0	\$0
3	Non-Traditionally Funded Transportation Project	\$8,441,118	\$8,441,118	\$0	\$0	\$0	\$0	\$0	\$0	\$8,441,118	\$8,441,118
4	Statewide Connectivity Corridor Projects	\$0	\$0	\$0	\$0	\$0	\$0	\$0	\$0	\$0	\$0
5	CMAQ	\$0	\$0	\$0	\$0	\$0	\$0	\$0	\$0	\$0	\$0
5 Flex	Map21 Flex	\$0	\$0	\$0	\$0	\$0	\$0	\$0	\$0	\$0	\$0
6	Structures	\$0	\$0	\$0	\$0	\$0	\$0	\$0	\$0	\$0	\$0
7	Metro Mobility & Rehab	\$1,634,277	\$1,634,277	\$0	\$0	\$26,796,902	\$26,796,902	\$0	\$0	\$28,431,179	\$28,431,179
8	Safety	\$0	\$0	\$0	\$0	\$0	\$0	\$0	\$0	\$0	\$0
9	Enhancements	\$1,234,456	\$1,234,456	\$0	\$0	\$0	\$0	\$0	\$0	\$1,234,456	\$1,234,456
9 Flex	TAP	\$0	\$0	\$0	\$0	\$0	\$0	\$0	\$0	\$0	\$0
10	Supplemental Transportation	\$16,620,223	\$16,620,223	\$0	\$0	\$0	\$0	\$0	\$0	\$16,620,223	\$16,620,223
10 CBI	Corridor Border	\$39,100,000	\$39,100,000	\$0	\$0	\$0	\$0	\$0	\$0	\$39,100,000	\$39,100,000
11	District Discretionary	\$0	\$0	\$0	\$0	\$0	\$0	\$0	\$0	\$0	\$0
12	Strategic Priority	\$0	\$0	\$0	\$0	\$0	\$0	\$0	\$0	\$0	\$0
12C	Strategic Priority RECON	\$0	\$0	\$0	\$0	\$0	\$0	\$0	\$0	\$0	\$0
12S	Strategic Priority RECON	\$0	\$0	\$0	\$0	\$0	\$0	\$0	\$0	\$0	\$0
SBPE	Strategy Budget PE	\$0	\$0	\$0	\$0	\$0	\$0	\$0	\$0	\$0	\$0
SB 102	Strategy 102	\$0	\$0	\$0	\$0	\$0	\$0	\$0	\$0	\$0	\$0
Total		\$67,030,074	\$67,030,074	\$0	\$0	\$26,796,902	\$26,796,902	\$0	\$0	\$93,826,976	\$93,826,976

Funding Participation Source

Source	FY 2017	FY 2018	FY 2019	FY 2020	Total
Federal	\$47,941,522	\$0	\$21,437,522	\$0	\$69,379,044
State	\$7,820,000	\$0	\$0	\$0	\$7,820,000
Local Match	\$2,827,434	\$0	\$5,359,380	\$0	\$8,186,814
CAT 3 - Local Contributions (LC)	\$8,441,118	\$0	\$0	\$0	\$8,441,118
CAT 3 - Prop 1	\$0	\$0	\$0	\$0	\$0
CAT 3 - Prop 7	\$0	\$0	\$0	\$0	\$0
CAT 3 - Prop 12	\$0	\$0	\$0	\$0	\$0
CAT 3 - Prop 14 Bonds	\$0	\$0	\$0	\$0	\$0
CAT 3 - Texas Mobility Fund	\$0	\$0	\$0	\$0	\$0
CAT 3 - Vehical Registration Fees - VTR	\$0	\$0	\$0	\$0	\$0
CAT 3 - RTR	\$0	\$0	\$0	\$0	\$0
CAT 3 - SH 121 Toll Revenue	\$0	\$0	\$0	\$0	\$0
CAT 3 - SH 161 Toll Revenue	\$0	\$0	\$0	\$0	\$0
CAT 3 - SH 130 Concession Revenue	\$0	\$0	\$0	\$0	\$0
CAT 3 - PTF	\$0	\$0	\$0	\$0	\$0
CAT 3 - Unique Federal Program - Tiger II	\$0	\$0	\$0	\$0	\$0
CAT 3 - TDC	\$0	\$0	\$0	\$0	\$0
Other - Section 5306	\$0	\$0	\$0	\$0	\$0
Other - Strategy PE Budget	\$0	\$0	\$0	\$0	\$0
Other - Strategy 102 Budget	\$0	\$0	\$0	\$0	\$0
Total	\$67,030,074	\$0	\$26,796,902	\$0	\$93,826,976

Project		Hachar Loop PS&E from FM 1472 to I-35 (interim section - 5 lane rural)			
		Scheduled letting: February 2017			
LATEST ESTIMATE - 10/1/15 - DEC					
ROW			\$13,538,062.00		
Construction Cost			\$41,968,066.46		
Construction Engineering	4.50%		\$1,888,562.99		
Contingency	6.50%		\$2,727,924.32		
Indirect	6.20%		\$2,602,020.12		
PS&E *	3.89%		\$1,634,277.42		
Total Project Cost			\$64,358,913.31		
YOE Cost			\$1,634,277.42		
PROPOSED PROGRAMMING					
Funding by Category	Phase	Total	Federal	State	Local
Category 7	Design / PS&E	1,634,277.42	1,307,421.94		261,484.39
TOTAL PROGRAMMED FUNDS		1,634,277.42	1,307,421.94	0.00	261,484.39
CBI FUNDS to Redistribute					
* based off of the latest construction estimate , requires negotiation and approval of fee by TxDOT. Assumes roadway may be taken on system.					

Project		Hachar Loop Construction FM 1472 to Beltway Parkway (interim section - 5 lane rural)			
		Scheduled letting: September 2019 - FY2020			
LATEST ESTIMATE - 10/1/15 - DEC					
ROW			\$13,538,062.00		
Construction Cost			\$24,141,353.65		
Construction Engineering	4.50%		\$1,086,360.91		
Contingency	6.50%		\$1,569,187.99		
Indirect	6.20%		\$1,496,763.93		
Total Project Cost			\$41,831,728.48		
YOE Cost*			\$26,796,902.55		
PROPOSED PROGRAMMING					
Funding by Category	Phase	Total	Federal	State	Local
Category 7	Construction	\$26,796,902.55	21,437,522.04		4,287,504.41
TOTAL PROGRAMMED FUNDS		26,796,902.55	21,437,522.04		4,287,504.41
* based off of the latest construction estimate , requires negotiation and approval of fee by TxDOT. Includes Construction Engineering and Inspection (Local Let).					

Project		Hachar Loop Construction Beltway Parkway to I-35(Interim section - 5 lane rural)			
		Scheduled letting: September 2022 - FY2023			
LATEST ESTIMATE - 10/1/15 - DEC					
ROW			\$13,538,062.00		
Construction Cost			\$17,826,712.81		
Construction Engineering	4.50%		\$802,202.08		
Contingency	6.50%		\$1,158,736.33		
Indirect	6.20%		\$1,105,256.19		
Total Project Cost			\$34,430,969.41		
YOE Cost*			\$21,440,668.82		
PROPOSED PROGRAMMING					
Funding by Category	Phase	Total	Federal	State	Local
Category 7	Construction	\$21,440,668.82	17,152,535.06		3,430,507.01
TOTAL PROGRAMMED FUNDS		21,440,668.82	17,152,535.06		3,430,507.01
* based off of the latest construction estimate , requires negotiation and approval of fee by TxDOT. Includes Construction Engineering and Inspection (Local Let). Includes escalation.					

DRAFT 2017 UTP PLANNING TARGETS

Category 7: Metropolitan Mobility/Rehabilitation (STP-MM) Funding Summary											
District/MPO/Division	FY 2017	FY 2018	FY 2019	FY 2020	FY 2021	FY 2022	FY 2023	FY 2024	FY 2025	FY 2026	TOTALS
(ABL) Abilene MPO	-	-	-	-	-	-	-	-	-	-	-
(AMA) Amarillo MPO	-	-	-	-	-	-	-	-	-	-	-
(ATL) Texarkana MPO	-	-	-	-	-	-	-	-	-	-	-
(AJS) CAMPO TMA	20,210,000	20,370,000	32,150,000	35,100,000	\$35,570,000	\$36,020,000	\$36,440,000	\$36,820,000	\$37,140,000	\$37,400,000	\$37,220,000
(BMT & HOU) HGAC TMA	111,140,000	123,195,000	126,840,000	133,950,000	\$135,350,000	\$137,080,000	\$138,650,000	\$140,100,000	\$141,340,000	\$142,320,000	\$1,330,730,000
(BMT) JHCRTS MPO	-	-	-	-	-	-	-	-	-	-	-
(BRY) Bryan-College Station MPO	-	-	-	-	-	-	-	-	-	-	-
(CRP) Corpus Christi TMA	6,950,000	7,600,000	7,900,000	8,240,000	\$8,360,000	\$8,480,000	\$8,550,000	\$8,650,000	\$8,730,000	\$8,790,000	\$82,150,000
(DAL, FTW & PAR) NCTCOG TMA	117,650,000	130,400,000	135,940,000	141,370,000	\$143,280,000	\$145,090,000	\$146,780,000	\$148,310,000	\$149,820,000	\$150,660,000	\$1,408,700,000
(ELP) El Paso TMA	29,520,000	18,350,000	19,080,000	19,900,000	\$20,160,000	\$20,420,000	\$20,690,000	\$20,870,000	\$21,060,000	\$21,200,000	\$211,220,000
(LRD) Laredo TMA	5,050,000	5,600,000	5,830,000	6,070,000	\$6,150,000	\$6,230,000	\$6,300,000	\$6,370,000	\$6,430,000	\$6,470,000	\$60,600,000
(LBB) Lubbock TMA	1,240,000	9,490,000	5,880,000	6,110,000	\$6,200,000	\$6,280,000	\$6,350,000	\$6,410,000	\$6,470,000	\$6,520,000	\$60,930,000
(ODA) Midland-Odessa TMA	-	-	-	-	-	-	-	-	-	-	-
(PAR) Sherman-Denison MPO	-	-	-	-	-	-	-	-	-	-	-
(PHR) Hartings-San Benito MPO	-	-	-	-	-	-	-	-	-	-	-
(PHR) Hidalgo County TMA	15,620,000	17,320,000	18,000,000	18,770,000	\$19,030,000	\$19,270,000	\$19,480,000	\$19,700,000	\$19,870,000	\$20,010,000	\$187,080,000
(PHR) Brownsville TMA	10,180,000	5,170,000	5,380,000	5,610,000	\$5,680,000	\$5,760,000	\$5,830,000	\$5,880,000	\$5,930,000	\$5,970,000	\$1,370,000
(SJT) San Angelo MPO	-	-	-	-	-	-	-	-	-	-	-
(SAT) AAMPO	60,990,000	41,780,000	43,420,000	45,290,000	\$45,900,000	\$46,480,000	\$47,020,000	\$47,510,000	\$47,930,000	\$48,270,000	\$474,250,000
(TYL) Tyler MPO	-	-	-	-	-	-	-	-	-	-	-
(TYL) Longview MPO	-	-	-	-	-	-	-	-	-	-	-
(WAC) Killeen-Temple TMA	4,570,000	5,170,000	5,370,000	5,610,000	\$5,680,000	\$5,750,000	\$5,820,000	\$5,880,000	\$5,930,000	\$5,970,000	\$5,850,000
(WAC) Waco MPO	-	-	-	-	-	-	-	-	-	-	-
(WFS) Wichita Falls MPO	-	-	-	-	-	-	-	-	-	-	-
(YKZ) Victoria MPO	-	-	-	-	-	-	-	-	-	-	-
Statewide	-	-	-	-	-	-	-	-	-	-	-
Statewide Unallocated	-	-	-	-	-	-	-	-	-	-	-
Total	\$ 382,810,000	\$ 384,430,000	\$ 406,570,000	\$ 425,620,000	\$ 431,360,000	\$ 438,820,000	\$ 441,900,000	\$ 446,300,000	\$ 450,450,000	\$ 453,580,000	\$ 4,280,040,000

Notes:
Category 7 distributed to MPO's with urbanized area population over 200,000.

Vanessa Guerra

From: Randy Aguilar <Randy.Aguilar@txdot.gov>
Sent: Monday, July 11, 2016 9:55 AM
To: Vanessa Guerra
Cc: Ana Duncan
Subject: Manual Runs and Summary for November Revision
Attachments: ManualRuns.xlsx; 2017-2020 Financial Summary Required Highway_STIP V13 AB 112016.xlsx

Vanessa,

Attached are the manual runs and updated summary for the November Revision.

CHANGES

CSJ:0922-33-165 was updated with Cat 7

CSJ:0922-33-076 corrected from state funds to local

CSJ:0922-33-093 corrected from state funds to local

ADD

CSJ:0086-14-065 was added to new TIP

CSJ:0086-14-081 was the ITS portion of 0086-14-065 but now separate as per Fed request

CSJ:0922-33-900 was added for the PS&E and ROW mapping for Hachar/Reuthinger total length. Funded with Cat 7 funds.

Please Note that CSJ:0086-14-065 was divided in two. We added CSJ:0086-14-081 for the ITS portion of the project as requested by the feds. Both will add up to \$39,100,000 in CBI as originally set up. Please include this in your revision.

Randy Aguilar

956-712-7457

Randy.Aguilar@txdot.gov



CHANGES

0922-33-165 CS Phase C, E Let 2/18
 From: FM 1472
 To: 0.100 Miles E of Beltway Parkway
 Construction of rural highway

PE	1,313,048	FUNDS	Federal	State	Local	LC	TOTAL
Construction	26,796,902	CAT 7	21,437,521		0	5,359,380	0 26,796,902
Const Eng	1,313,048						
Conting	334,961						

0922-33-076 CS Phase C, E Let 9/17
 From: Intersection of FM 1472 and Flecha
 To: 0.174 Miles East of FM 1472
 Realignment of Flacha Ln/Las Cruces along FM 1472

PE	92,550	FUNDS	Federal	State	Local	LC	TOTAL
ROW	1,250,000	10-Misc	1,098,378		0	274,595	0 1,372,973
Construction	1,888,768	Local		0	0	0	700,895 700,895
Const Eng	92,550	TOTAL:					2,073,868
Conting	23,610						

0922-33-093 CS Phase C, E, R Let 9/17
 From: 0.25 M East of Calton/ San Maria Interchange
 To: 0.25 M West of Calton/ San Maria Interchange
 Construction of a Grade separation at Calton/San Maria Intersection

PE	830,293	FUNDS	Federal	State	Local	LC	TOTAL
ROW	3,450,000	10-Misc	11,499,829		0	1,647,606	0 13,147,436
Construction	16,944,765	Local		0	0	0	8,872,332 8,872,332
Const Eng	794,709	TOTAL:					22,019,767
Conting	506,648						

ADD

0086-14-065 LP 20 Phase C Let 1/17
 From: 0.330 Miles W of IH 35
 To: 0.160 Miles W of McPherson
 For the construction of an interchange facility over IH 35

PE	1,842,400	FUNDS	Federal	State	Local	LC	TOTAL
Construction	37,600,000	10-CBI	30,080,000	7,520,000		0	0 37,600,000
Const Eng	1,763,440	11	1	0	0	0	0 1
Conting	1,124,240	TOTAL:					37,600,001

0086-14-081 LP 20 Phase C, E Let 1/17
 From: 1.400 Miles W of IH 35
 To: 0.600 Miles W of McPherson
 ITS PORTION of an interchange facility over IH 35

PE	73,500	FUNDS	Federal	State	Local	LC	TOTAL
Construction	1,500,000	10-CBI	1,200,000	300,000		0	0 1,500,000
Const Eng	70,350	11	1	0		0	0 1
Conting	44,850	TOTAL:					1,500,001

0922-33-900 Hachar/Reuthinger Phase E Let 2/17
 From: FM 1472
 To: IH 35 West Frontage Road
 PS&E including ROW Mapping only

PE	80,079	FUNDS	Federal	State	Local	LC	TOTAL
Construction	1,634,277	CAT 7	1,307,421		0 326,855		0 1,634,277
Const Eng	79,916						
Conting	18,467						



MPO / Laredo District - 22
Initial FY 2017 - 2020 Transportation Improvement Program

Funding by Category

Category	Description	FY 2017		FY 2018		FY 2019		FY 2020		Total FY 2017 - 2020	
		Programmed	Authorized	Programmed	Authorized	Programmed	Authorized	Programmed	Authorized	Programmed	Authorized
1	Preventive Maintenance and Rehabilitation	\$0	\$0	\$0	\$0	\$0	\$0	\$0	\$0	\$0	\$0
2M or 2U	Urban Area (Non-TMA) Corridor Projects	\$0	\$0	\$0	\$0	\$0	\$0	\$0	\$0	\$0	\$0
3	Non-Traditionally Funded Transportation Project	\$0	\$0	\$9,573,227	\$9,573,227	\$0	\$0	\$0	\$0	\$9,573,227	\$9,573,227
4	Statewide Connectivity Corridor Projects	\$0	\$0	\$0	\$0	\$0	\$0	\$0	\$0	\$0	\$0
5	CMAQ	\$0	\$0	\$0	\$0	\$0	\$0	\$0	\$0	\$0	\$0
5 Flex	Map21 Flex	\$0	\$0	\$0	\$0	\$0	\$0	\$0	\$0	\$0	\$0
6	Structures	\$0	\$0	\$0	\$0	\$0	\$0	\$0	\$0	\$0	\$0
7	Metro Mobility & Rehab	\$0	\$0	\$28,431,179	\$28,431,179	\$0	\$0	\$0	\$0	\$28,431,179	\$28,431,179
8	Safety	\$0	\$0	\$0	\$0	\$0	\$0	\$0	\$0	\$0	\$0
9	Enhancements	\$1,234,456	\$1,234,456	\$0	\$0	\$0	\$0	\$0	\$0	\$1,234,456	\$1,234,456
9 Flex	TAP	\$0	\$0	\$0	\$0	\$0	\$0	\$0	\$0	\$0	\$0
10	Supplemental Transportation	\$0	\$0	\$14,520,408	\$14,520,408	\$0	\$0	\$0	\$0	\$14,520,408	\$14,520,408
10 CBI	Corridor Border	\$39,100,000	\$39,100,000	\$0	\$0	\$0	\$0	\$0	\$0	\$39,100,000	\$39,100,000
11	District Discretionary	\$0	\$0	\$0	\$0	\$0	\$0	\$0	\$0	\$0	\$0
12	Strategic Priority	\$0	\$0	\$0	\$0	\$0	\$0	\$0	\$0	\$0	\$0
12C	Strategic Priority RECON	\$0	\$0	\$0	\$0	\$0	\$0	\$0	\$0	\$0	\$0
12S	Strategic Priority RECON	\$0	\$0	\$0	\$0	\$0	\$0	\$0	\$0	\$0	\$0
SBPE	Strategy Budget PE	\$0	\$0	\$0	\$0	\$0	\$0	\$0	\$0	\$0	\$0
SB 102	Strategy 102	\$0	\$0	\$0	\$0	\$0	\$0	\$0	\$0	\$0	\$0
Total		\$40,334,456	\$40,334,456	\$52,524,814	\$52,524,814	\$0	\$0	\$0	\$0	\$92,859,270	\$92,859,270

Funding Participation Source

Source	FY 2017	FY 2018	FY 2019	FY 2020	Total
Federal	\$32,267,565	\$35,343,151	\$0	\$0	\$67,610,716
State	\$7,820,000	\$0	\$0	\$0	\$7,820,000
Local Match	\$246,891	\$7,608,436	\$0	\$0	\$7,855,327
CAT 3 - Local Contributions (LC)	\$0	\$9,573,227	\$0	\$0	\$9,573,227
CAT 3 - Prop 1	\$0	\$0	\$0	\$0	\$0
CAT 3 - Prop 7	\$0	\$0	\$0	\$0	\$0
CAT 3 - Prop 12	\$0	\$0	\$0	\$0	\$0
CAT 3 - Prop 14 Bonds	\$0	\$0	\$0	\$0	\$0
CAT 3 - Texas Mobility Fund	\$0	\$0	\$0	\$0	\$0
CAT 3 - Vehical Registration Fees - VTR	\$0	\$0	\$0	\$0	\$0
CAT 3 - RTR	\$0	\$0	\$0	\$0	\$0
CAT 3 - SH 121 Toll Revenue	\$0	\$0	\$0	\$0	\$0
CAT 3 - SH 161 Toll Revenue	\$0	\$0	\$0	\$0	\$0
CAT 3 - SH 130 Concession Revenue	\$0	\$0	\$0	\$0	\$0
CAT 3 - PTF	\$0	\$0	\$0	\$0	\$0
CAT 3 - Unique Federal Program - Tiger II	\$0	\$0	\$0	\$0	\$0
CAT 3 - TDC	\$0	\$0	\$0	\$0	\$0
Other - Section 5306	\$0	\$0	\$0	\$0	\$0
Other - Strategy PE Budget	\$0	\$0	\$0	\$0	\$0
Other - Strategy 102 Budget	\$0	\$0	\$0	\$0	\$0
Total	\$40,334,456	\$52,524,814	\$0	\$0	\$92,859,270

Vanessa Guerra

From: Randy Aguilar <Randy.Aguilar@txdot.gov>
Sent: Thursday, July 14, 2016 4:31 PM
To: Vanessa Guerra
Subject: Latest Summary
Attachments: 2017-2020 Financial Summary Required Highway_STIP V13 AB 112016(3).xlsx

Here is the latest.

Randy Aguilar
956-712-7457
Randy.Aguilar@txdot.gov





MPO / Laredo District - 22
Initial FY 2017 - 2020 Transportation Improvement Program

Funding by Category

Category	Description	FY 2017		FY 2018		FY 2019		FY 2020		Total FY 2017 - 2020	
		Programmed	Authorized	Programmed	Authorized	Programmed	Authorized	Programmed	Authorized	Programmed	Authorized
1	Preventive Maintenance and Rehabilitation	\$0	\$0	\$0	\$0	\$0	\$0	\$0	\$0	\$0	\$0
2M or 2U	Urban Area (Non-TMA) Corridor Projects	\$0	\$0	\$0	\$0	\$0	\$0	\$0	\$0	\$0	\$0
3	Non-Traditionally Funded Transportation Project	\$8,441,118	\$8,441,118	\$0	\$0	\$0	\$0	\$0	\$0	\$8,441,118	\$8,441,118
4	Statewide Connectivity Corridor Projects	\$0	\$0	\$0	\$0	\$0	\$0	\$0	\$0	\$0	\$0
5	CMAQ	\$0	\$0	\$0	\$0	\$0	\$0	\$0	\$0	\$0	\$0
5 Flex	Map21 Flex	\$0	\$0	\$0	\$0	\$0	\$0	\$0	\$0	\$0	\$0
6	Structures	\$0	\$0	\$0	\$0	\$0	\$0	\$0	\$0	\$0	\$0
7	Metro Mobility & Rehab	\$1,634,277	\$1,634,277	\$0	\$0	\$26,796,902	\$26,796,902	\$0	\$0	\$28,431,179	\$28,431,179
8	Safety	\$0	\$0	\$0	\$0	\$0	\$0	\$0	\$0	\$0	\$0
9	Enhancements	\$1,234,456	\$1,234,456	\$0	\$0	\$0	\$0	\$0	\$0	\$1,234,456	\$1,234,456
9 Flex	TAP	\$0	\$0	\$0	\$0	\$0	\$0	\$0	\$0	\$0	\$0
10	Supplemental Transportation	\$16,620,223	\$16,620,223	\$0	\$0	\$0	\$0	\$0	\$0	\$16,620,223	\$16,620,223
10 CBI	Corridor Border	\$39,100,000	\$39,100,000	\$0	\$0	\$0	\$0	\$0	\$0	\$39,100,000	\$39,100,000
11	District Discretionary	\$0	\$0	\$0	\$0	\$0	\$0	\$0	\$0	\$0	\$0
12	Strategic Priority	\$0	\$0	\$0	\$0	\$0	\$0	\$0	\$0	\$0	\$0
12C	Strategic Priority RECON	\$0	\$0	\$0	\$0	\$0	\$0	\$0	\$0	\$0	\$0
12S	Strategic Priority RECON	\$0	\$0	\$0	\$0	\$0	\$0	\$0	\$0	\$0	\$0
SBPE	Strategy Budget PE	\$0	\$0	\$0	\$0	\$0	\$0	\$0	\$0	\$0	\$0
SB 102	Strategy 102	\$0	\$0	\$0	\$0	\$0	\$0	\$0	\$0	\$0	\$0
Total		\$67,030,074	\$67,030,074	\$0	\$0	\$26,796,902	\$26,796,902	\$0	\$0	\$93,826,976	\$93,826,976

Funding Participation Source

Source	FY 2017	FY 2018	FY 2019	FY 2020	Total
Federal	\$47,941,522	\$0	\$21,437,522	\$0	\$69,379,044
State	\$7,820,000	\$0	\$0	\$0	\$7,820,000
Local Match	\$2,827,434	\$0	\$5,359,380	\$0	\$8,186,814
CAT 3 - Local Contributions (LC)	\$8,441,118	\$0	\$0	\$0	\$8,441,118
CAT 3 - Prop 1	\$0	\$0	\$0	\$0	\$0
CAT 3 - Prop 7	\$0	\$0	\$0	\$0	\$0
CAT 3 - Prop 12	\$0	\$0	\$0	\$0	\$0
CAT 3 - Prop 14 Bonds	\$0	\$0	\$0	\$0	\$0
CAT 3 - Texas Mobility Fund	\$0	\$0	\$0	\$0	\$0
CAT 3 - Vehical Registration Fees - VTR	\$0	\$0	\$0	\$0	\$0
CAT 3 - RTR	\$0	\$0	\$0	\$0	\$0
CAT 3 - SH 121 Toll Revenue	\$0	\$0	\$0	\$0	\$0
CAT 3 - SH 161 Toll Revenue	\$0	\$0	\$0	\$0	\$0
CAT 3 - SH 130 Concession Revenue	\$0	\$0	\$0	\$0	\$0
CAT 3 - PTF	\$0	\$0	\$0	\$0	\$0
CAT 3 - Unique Federal Program - Tiger II	\$0	\$0	\$0	\$0	\$0
CAT 3 - TDC	\$0	\$0	\$0	\$0	\$0
Other - Section 5306	\$0	\$0	\$0	\$0	\$0
Other - Strategy PE Budget	\$0	\$0	\$0	\$0	\$0
Other - Strategy 102 Budget	\$0	\$0	\$0	\$0	\$0
Total	\$67,030,074	\$0	\$26,796,902	\$0	\$93,826,976



F. Discussion with possible action on Mines Road.

VI. REPORT(S) AND PRESENTATIONS (No action required)

A. Status report on the Regional Mobility Authority (RMA).

1. Report on Feasibility Study of a possible Transportation Reinvestment Zone (TRZ) on Vallecillo Road.
2. Status of the RMA's FASTLANE Grant.
3. Status of the Loop 20 project.

B. Status report by TxDOT on public and private acreage Right-of-Way on the US 59/ Loop 20 Project.

C. Status report by TxDOT on the Fast Lane Grant application submitted for the Main Lanes on Loop 20 over IH 35.