



## MPO TECHNICAL COMMITTEE MEETING

[www.laredompo.org](http://www.laredompo.org)

Meeting Date & Time: **May 10, 2022** 2:30 p.m.

Meeting Location: **Virtual**

### AGENDA:

1. Chairperson to call meeting to order.
2. Discussion and recommendation on Resolution No. MPO 2022-05, adopting the 2023-2026 Transportation Improvement Program (TIP).
3. Discussion on potential planning studies to be programmed in the FY 2023 Unified Planning Work Program (UPWP).
4. Update on the upcoming MPO Policy Committee meeting draft agenda.
5. Discussion of old or new business.
6. Adjournment.



**FY 2023-2026**

# **Transportation Improvement Program**



**Public Meeting Date(s):  
April 20th, 2022, May 18th, 2022**

**Approved by Policy Committee:**

# TABLE OF CONTENTS

I. INTRODUCTION .....	1
Planning Factors .....	1
II. PURPOSE.....	2
III. DEFINITION OF AREA .....	2
Map of LWCAMPO Boundaries.....	3
IV. PUBLIC INVOLVEMENT PROCESS .....	4
V. PROJECT SELECTION PROCESS.....	4
VI. PROGRESS FROM PREVIOUS YEAR .....	4
VII. PERFORMANCE MANAGEMENT.....	4
Safety (PM1).....	5
Pavement and Bridge Condition (PM2).....	6
Roadway System Performance (PM3).....	7
Transit State of Good Repair (PM4) .....	8
Public Transportation Agency Safety Plan (PTASP).....	8
VIII. AIR QUALITY ISSUES .....	9
IX. AMERICANS WITH DISABILITIES ACT (ADA) .....	9
X. GROUPED STATEWIDE PROJECTS .....	10
XI. FEDERAL HIGHWAY NON-GROUPED PROJECTS AND FINANCIAL SUMMARY.....	13
XII. TRANSIT PROJECTS AND FINANCIAL SUMMARY .....	28
XIII.MPO Self-Certification.....	34
XIV.GLOSSARY OF TERMS.....	35



## I. INTRODUCTION

In 1962, the Federal Aid Highway Act stated, that after July 1, 1965, the Secretary of Commerce shall not approve any program for highway projects in any urban area of more than fifty thousand population unless he finds that such projects are based on a continuing, comprehensive transportation planning process carried on cooperatively by the states and local communities. This directive, resulted in the creation of the Laredo Urban Transportation Study (LUTS), recently renamed as the Laredo Webb County Area Metropolitan Planning Organization (MPO), to provide for a continuing, comprehensive, and cooperative transportation planning process for the Laredo Urbanized area as mandated by the Act.

In 1973, the Federal Aid Highway Act, created the Metropolitan Planning Organizations (MPO) to be the recipient of special planning funds ("PL" funds) and responsible for Section 112 transportation planning.

In 1979, the Governor of Texas designated the LUTS Steering Committee as the MPO for the Laredo Urbanized Area. A contract between the then State Department of Highways and Public Transportation (SDHPT), the LUTS Steering Committee, and City of Laredo identified the cooperative responsibilities of the State, the MPO and the City. These responsibilities must now conform to 23 U. S. C. 134 on metropolitan transportation planning. The Fixing America's Surface Transportation (FAST) Act, was signed into law by President Obama on December 4, 2015. The authorization of the FAST Act does not represent an abandonment of the programs and planning requirements established under the Safe, Accountable, Flexible and Efficient Transportation Equity Act: A Legacy for Users (SAFETEA-LU) and Moving Ahead for Progress in 21<sup>st</sup> Century (MAP-21), the previous federal transportation bills. Many of the same programs and metropolitan planning requirements are continued under the FAST Act.

The Laredo urbanized area, as determined by the 2010 Census, has surpassed 200,000 in population, and was designated a Transportation Management Area effective July 18<sup>th</sup>, 2012. It has not been designated as a non-attainment area for purposes of compliance with the Clean Air Act. The MPO, in cooperation with the Texas Department of Transportation (TxDOT) and the local transit operator, has proposed simplified planning procedures authorized by 23 C. F. R. Part 450 Subpart C.

The Transportation Improvement Program (TIP) is designed and developed to conform to the requirements of 23 C. F. R. 450.316(a) as well as the 10 factors of identified in the FAST Act.

### **Planning Factors**

The ten planning factors are as follows:

- 1) Support the economic vitality of the metropolitan area, especially by enabling global competitiveness, productivity, and efficiency.
- 2) Increase the safety of the transportation system for motorized and non-motorized users.
- 3) Increase the security of the transportation system for motorized and non-motorized users.
- 4) Increase the accessibility and mobility for people and freight.



- 5) Protect and enhance the environment, promote energy conservation, improve the quality of life, and promote consistency between transportation improvements and State and local planned growth and economic development patterns.
- 6) Enhance the integration and connectivity of the transportation system, across and between modes, people, and freight.
- 7) Promote efficient system management and operation.
- 8) Emphasize the preservation of the existing transportation system, and,
- 9) Improve the resiliency and reliability of the transportation system and reduce or mitigate stormwater impacts of surface transportation; and,
- 10) Enhance travel and tourism.

## **II. PURPOSE**

Federal law requires that Metropolitan Planning Organizations (MPOs) in cooperation with the State and affected transit operators develop Transportation Improvement Programs (TIPs) for their planning areas. These Transportation Programs then become part of the State Transportation Improvement Program (STIP). The Transportation Improvement Program shall include capital and non-capital surface transportation projects (or phases of projects) within the boundaries of the metropolitan planning area proposed for funding under 23 U.S.C. and 49 U.S.C. Chapter 53 (including transportation enhancements; Federal Lands Highway program projects; safety projects included in the State's Strategic Highway Safety Plan; trails projects; pedestrian walkways; and bicycle facilities), except those projects that may (but are not required to) be included as identified in 23 CFR Part 450 Subpart C, 450.324(c).

These projects are consistent with the long-range plan of the state. Project selection for projects involving Federal participation is carried out by the MPO in consultation with the State DOT. The program will include a project, or an identified phase of a project, only if full funding can reasonably be anticipated to be available within the time period that is contemplated for completion of the project.

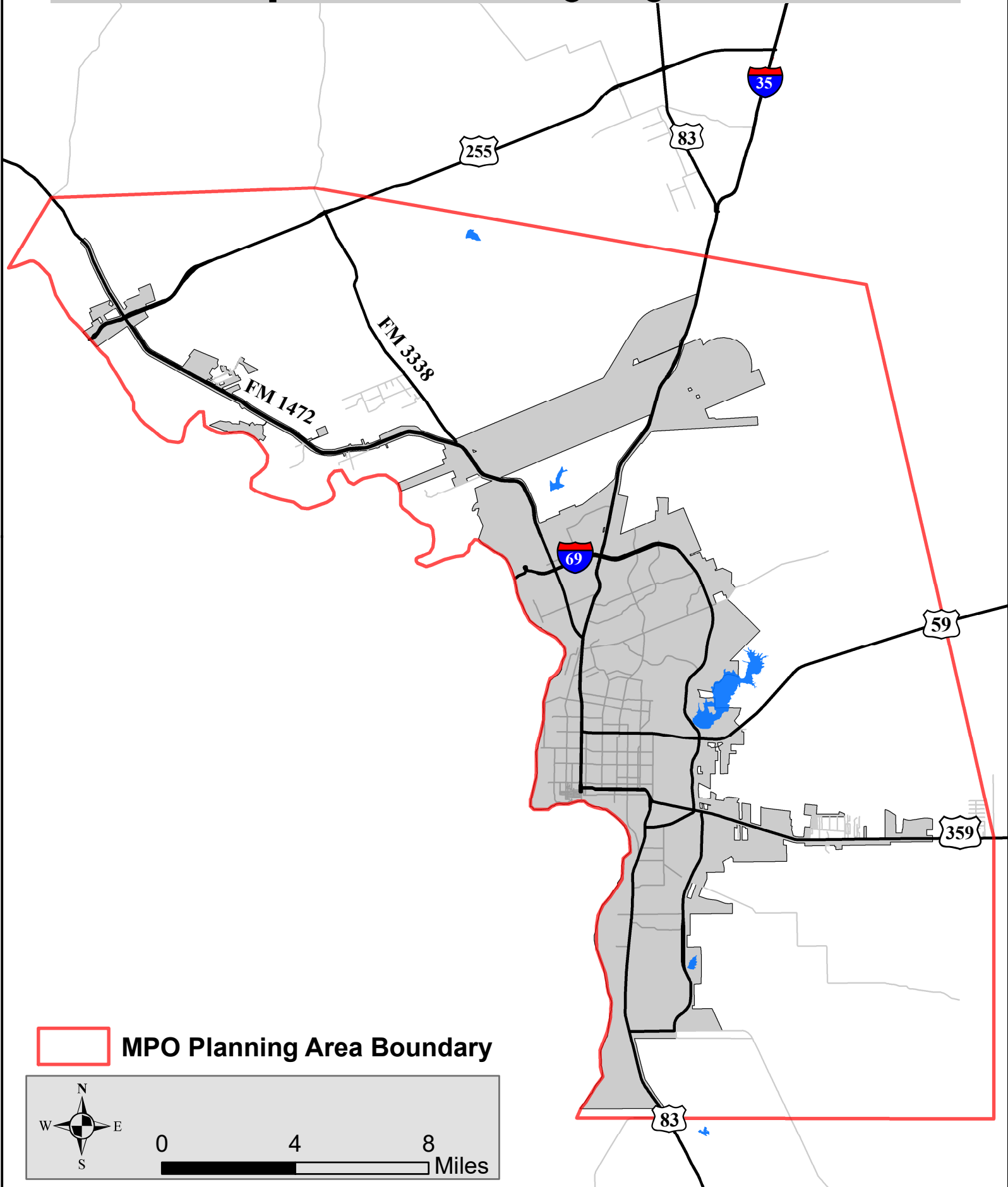
The Texas Department of Transportation (TxDOT), and the Laredo Webb County Area Metropolitan Planning Organization (MPO) have cooperatively developed the current TIP in accordance with the requirements of the FAST Act and is financially constrained.

## **III. DEFINITION OF AREA**

The boundaries of the Metropolitan Planning Area and the Urbanized area were approved by the MPO on April 8, 2004, (see map).



# Laredo Webb County Area Metropolitan Planning Organization



 MPO Planning Area Boundary





#### **IV. PUBLIC INVOLVEMENT PROCESS**

The Laredo Webb County Area Metropolitan Planning Organization (MPO) developed, in cooperation with the State and FHWA, and in conformance with the requirements of 23 CFR 450.316, its adopted Public Participation Plan. The Laredo MPO's Public Involvement Process (PIP) was adopted on June 9<sup>th</sup>, 1994 and subsequently amended on November 22<sup>nd</sup>, 1996, on July 24<sup>th</sup>, 2003, and on May 15<sup>th</sup>, 2017. After a required 45-day public review and comment period, the Laredo MPO Policy Committee adopted the Public Participation Plan (PPP) which replaced the PIP. The PPP is intended to provide every opportunity for the involvement of citizens in the transportation planning process in conformance with the requirements of 23 CFR 450.316 (a).

#### **V. PROJECT SELECTION PROCESS**

The Metropolitan Transportation Plan (MTP) is the primary planning tool for selecting major projects to be included in the Unified Transportation Program (UTP) and TIP. On January 21<sup>st</sup>, 2020, the Laredo MPO, adopted the current MTP, including its Project Selection Procedures, at a public meeting held, which was noticed, and whose agenda was posted pursuant to the requirements of the Texas Open Meetings Act. Only projects consistent with a FHWA/FTA approved MTP and/or TIP may be eligible for funds administered by FHWA or FTA. The approved Transportation Improvement Program shall be utilized for programming projects within the metropolitan area in accordance with 23 CFR 450.330 (a) and (c).

#### **VI. PROGRESS FROM PREVIOUS YEAR**

The FY 2021-2024 TIP was adopted on a May 18<sup>th</sup>, 2020. Enclosed is a summary detailing the status of ongoing projects.

#### **VII. PERFORMANCE MANAGEMENT**

Transportation Performance Management is a strategic approach that uses system information to make investment and policy decisions to achieve national performance goals. Monitoring progress towards achieving these national performance goals is achieved through the use of performance measures. Using performance measures, decision makers can apply key information and data to understand the consequences of investment decisions across transportation modes.

The previous transportation funding bill, MAP-21, introduced a streamlined, performance-based, multimodal program. Through performance management, MAP-21 aimed to increase the accountability and transparency of the federal highway programs by improving transportation investment decision-making through performance-based planning and programming. The FAST Act continues the use of performance targets and performance measures at the national, state, and local level that were established with MAP-21. All established performance targets and measures should align with the national goals outlined in MAP-21, which are as follows:

Goal Area	National Goal
<b>Safety</b>	To achieve a significant reduction in traffic fatalities and serious injuries on all public roads.
<b>Infrastructure Condition</b>	To maintain the highway infrastructure asset system in a state of good repair.
<b>Congestion Reduction</b>	To achieve a significant reduction in congestion on the National Highway System.
<b>System Reliability</b>	To improve the efficiency of the surface transportation system.
<b>Freight Movement and Economic Vitality</b>	To improve the national freight network, strengthen the ability of rural communities to access national and international trade markets, and support regional economic development.
<b>Environmental Sustainability</b>	To enhance the performance of the transportation system while protecting and enhancing the natural environment.
<b>Reduced Project Delivery Delays</b>	To reduce project costs, promote jobs and the economy, and expedite the movement of people and goods by accelerating project completion through eliminating delays in the project development and delivery process, including reducing regulatory burdens and improving agencies' work practices.

MPOs are required to set performance targets and measures after the United States Department of Transportation and the State of Texas set national and state targets and measures. The MPO will maintain awareness of the performance measures process at both the federal and state level and will implement performance measures at the MPO level as appropriate. If the process of implementing performance measures requires additions or changes to the MTP and TIP, the documents will be amended in the future.

Currently, the FAST Act requires State DOTs and MPOs to establish performance targets and report on the progress toward achieving these targets for the following performance measures:

### **Safety (PM1)**

The Texas Department of Transportation (TxDOT) has established targets for five safety performance measures based on five-year rolling averages:



Performance Measure	2022 Statewide Target (Expressed as Five-Year 2018-2022 Average)
Total number of traffic related fatalities on all public roads	3,563
Rate of traffic related fatalities on all public roads per 100 million VMT	1.27
Total number of traffic related serious injuries on all public roads	16,677
Rate of traffic related serious injuries on all public roads per 100 million VMT	5.76
Total number of non-motorized fatalities and serious injuries on all public roads	2,367

The MPO adopts TxDOT’s safety performance targets within the metropolitan planning area boundary. The MPO supports the planning and programming of projects that contribute to the achievement of these targets.

For project selection, safety is one criterion where technical points are awarded based on the crash rate. Many projects adopted in the FY 2023-2026 TIP support achieving the targets established for safety. The MPO will monitor the established targets and report measurements to the Policy Committee.

**Pavement and Bridge Condition (PM2)**

Under the FAST Act, States are required to set targets for Bridge and Pavement Conditions for both Interstate and Non-Interstate National Highway System Roadways. The State’s Pavement and Bridge Measures (PM2):

- 1) Percentage of Interstate System pavement in good or better condition.
- 2) Percentage of Interstate System pavement in poor condition.
- 3) Percentage of Non-Interstate National Highway pavement in good condition.
- 4) Percentage of Non-Interstate National Highway pavement in poor condition.
- 5) Percentage of Bridge Deck on the National Highway System in good condition.
- 6) Percentage of Bridge Deck on the National Highway System in poor condition.



The Laredo Webb County Area MPO Policy Committee has adopted the States measures and targets. These targets are as follows:

Performance Measure	Baseline	2020 Target	2022 Target (Original)	2022 Target (Updated)
<b>Pavement on Interstate Highway (IH)</b>				
% in "good" condition			66.40%	66.5%
% in "poor" condition			0.33%	0.2%
<b>Pavement on Non-Interstate Highway (NHS)</b>				
% in "good" condition	54.40%	52.00%	52.33%	54.1%
% in "poor" condition	13.80%	14.30%	14.30%	14.2%
<b>NHS Bridge Deck Condition</b>				
% in "poor" condition	0.88%	0.80%	0.80%	1.5%
% in "good" condition	50.63%	50.58%	50.42%	50.4%

Projects selected for inclusion in the TIP are intended to support the achievement of the pavement and bridge condition targets. The MPO Policy Committee supports the planning and programming of projects that contribute to the achievement of these targets.

### Roadway System Performance (PM3)

Under the FAST Act, States are required to set targets for roadway system performance, specifically Interstate Reliability, non – Interstate national Highway System Reliability and Truck Travel Time Reliability. The State’s System Performance Measures (PM3) are as follows:

- 1) Percentage of person-miles traveled on the Interstate system rated “reliable” (TTR-IH).
- 2) Percentage of person-miles traveled on Non-Interstate National Highway System facilities rated “reliable” (TTR Non-IH).
- 3) Percentage of truck travel time on the Interstate system rated as “reliable” (TTTR).  
The MPO Policy Board has adopted TxDOT’s targets in support of the State meeting its targets.

The Laredo Webb County Area MPO’s has incorporated the following targets into the metropolitan transportation planning process and has utilized said targets as a tool in the planning and programming of projects:

Performance Measure	Baseline	2020 Target	2022 Target (Original)	2022 Target (Updated)
<b>Reliability</b>				
Interstate Highway (IH) Level of Travel Time Reliability.	79.60%	61.20%	56.60%	70.0%
Non-Interstate Highway (NHS) Travel Time Reliability.			55.40%	70.0%
Truck Travel Time Reliability (TTTR) Index.	1.5	1.7	1.79	1.76

The Laredo MPO commits to planning for and programming projects that contribute to the accomplishment of these targets. The Laredo MPO will also monitor all of the established targets and report achievements to the Policy Committee as necessary.

### Transit State of Good Repair (PM4)

MAP-21 and later the FAST Act mandated the Federal Transit Administration (FTA) to develop a rule establishing a strategic and systematic process of operating, maintaining, and improving public capital assets effectively through their entire life cycle. Under the Transit Asset Management (TAM) Final Rule, the FTA established four performance measures to approximate the State of Good Repair for four categories of capital assets. El Metro has adopted targets for three of the applicable transit asset management performance measures. These performance measures and targets will assist El Metro to quantify the condition of their assets and help facilitate target setting that supports local funding prioritization.

Asset Category	FTA established Performance Measure	Performance Target
Rolling Stock	% of revenue vehicles exceeding useable life benchmark (ULB)	75% of vehicles should be within their useable life benchmark (ULB)
Equipment	% of non-revenue service vehicles exceeding ULB	75% Equipment should be within their ULB
Facilities	% of facilities rated under 3.0 on the Transit Economic Requirements Model (TERM) scale	75% of facilities rated on a FTA TERM scale of 3.0 or above.
Infrastructure	% of track segments under performance restriction	Not applicable

The MPO Policy Committee adopted El Metro’s transit performance measurement targets in 2017.

The MPO supports the planning and programming of projects that contribute to the accomplishments of these performance targets. The transit projects adopted in the TIP are intended to support achieving the targets established for the transit state of good repair.

### Public Transportation Agency Safety Plan (PTASP)

On July 19, 2018, FTA published the Public Transportation Agency Safety Plan (PTASP) Final Rule, which requires certain operators of public transportation systems that receive federal funds under FTA's Urbanized Area Formula Grants to develop safety plans that include the processes and procedures to implement Safety Management Systems (SMS).

The PTASP has been developed by TxDOT on behalf of Laredo & Webb county Area Metropolitan Planning Organization, which is the Metropolitan Planning Organization (MPO) for the area, and LTMI in accordance with all requirements stated in 49 CFR Part 673



applicable to a small public transportation provider. The third version of the PTASP was adopted by the Mass Transit Board on March 21, 2022 and approved by the MPO Policy Committee on April 20, 2022.

Federal law requires transit agencies to make its safety performance targets available to States and MPOs to aid in the planning process. MPOs are responsible for integrating performance from PTASP into their planning process.

**Fixed Route (Bus) Safety Performance Targets**

MODE	BASELINE	TARGET
Fatalities	0	0
Rate of Fatalities per 100,000 VRM	0.00%	0.00%
Injuries	1	1
Rate of Injuries per 100,000 VRM	0.0%	0.0%
Safety Events	2	2
Rate of Safety Events per 100,000 VRM	0.14%	0.14%
Mean Distance Between Major Mechanical Failure	70,002	70,002

\*Rate = total number for year x 100,000/total vehicle revenue miles traveled

**Demand Response Safety Performance Targets**

MODE	BASELINE	TARGET
Fatalities	0	0
Rate of Fatalities per 100,000 VRM	0.00%	0.00%
Injuries	2	2
Rate of Injuries per 100,000 VRM	0.12%	0.12%
Safety Events	1	1
Rate of Safety Events per 100,000 VRM	0.60%	0.60%
Mean Distance Between Major Mechanical Failure	41,489	41,489

\*Rate = total number for year x 100,000/total vehicle revenue miles traveled

**VIII. AIR QUALITY ISSUES**

The Laredo metropolitan planning area is considered to be in attainment for ozone and carbon monoxide. The City's transit department is currently in the process of replacing its diesel vehicles with those which utilize compressed natural gas. Over 50% of all City buses currently operate on compressed natural gas.

**IX. AMERICANS WITH DISABILITIES ACT (ADA)**

The City Transit Department has created the EI Lift Program to address ADA considerations. The Transit Department has also actively pursues the strengthening of this program through their development and participation in the ADA Paratransit Study, sponsored by the MPO, and completed in 2013 which reviewed the program in its entirety with an emphasis on identification of areas for improvement.



---

## X. GROUPED STATEWIDE PROJECTS

Under 23 CFR 450.324(i) projects proposed for FHWA and/or FTA funding that are not considered by the State and MPO to be of appropriate scale for individual identification in a given program year **may be grouped by function, geographic area, and work type** by using applicable classifications under 23 CFR 771.1 I 7(c) and (d). In non-attainment and maintenance areas, these classifications must be consistent with the exempt project classifications contained in the U.S. EPA transportation conformity requirements (40 CFR Part 51).

The Laredo Webb County Area MPO is participating by grouping some projects in the Transportation Improvement Program (TIP) that are covered in the Texas Statewide Transportation Improvement Program (STIP).

The Texas STIP can be located at:

<https://www.txdot.gov/inside-txdot/division/transportation-planning/stips.html>

Financial accountability for these projects is the responsibility of the STIP, therefore, are not accounted for in the Financial Summary for the Laredo MPO totals. These projects are "exempt" from conformity requirements. These projects do not need policy approval by the Policy Committee for the purpose of revisions. See the following grouped project categories, and the "Definition of Grouped Projects."



# GROUPED PROJECT CSJ's

## Definition of Grouped Projects for use in the STIP

Revised February 23, 2021

PROPOSED CSJ	GROUPED PROJECT CATEGORY	DEFINITION
5000-00-950	PE-Preliminary Engineering	Preliminary Engineering for any project except added capacity projects in a nonattainment area. Includes activities which do not involve or lead directly to construction, such as planning and research activities; grants for training; engineering to define the elements of a proposed action or alternatives so that social, economic, and environmental effects can be assessed.
5000-00-951	Right of Way	Right of Way acquisition for any project except added capacity projects in a nonattainment area. Includes relocation assistance, hardship acquisition and protective buying.
5000-00-952 5000-00-957 5000-00-958	Preventive Maintenance and Rehabilitation	Projects to include pavement repair to preserve existing pavement so that it may achieve its designed loading. Includes seal coats, overlays, resurfacing, restoration and rehabilitation done with existing ROW. Also includes modernization of a highway by reconstruction, adding shoulders or adding auxiliary lanes (e.g., parking, weaving, turning, climbing, passing, non-added capacity) or drainage improvements associated with rehabilitation [See Note 3].
5000-00-953	Bridge Replacement and Rehabilitation	Projects to replace and/or rehabilitate functionally obsolete or structurally deficient bridges.
5000-00-954	Railroad Grade Separations	Projects to construct or replace existing highway-railroad grade crossings and to rehabilitate and/or replace deficient railroad underpasses, resulting in no added capacity.
5800-00-950	Safety	Projects to include the construction or replacement/rehabilitation of guard rails, median barriers, crash cushions, pavement markings, skid treatments, medians, lighting improvements, highway signs, curb ramps, railroad/highway crossing warning devices, fencing, intersection improvements (e.g., turn lanes), signalization projects and interchange modifications. Also includes projects funded via the Federal Hazard Elimination Program, Federal Railroad Signal Safety Program, or Access Managements projects, except those that result in added capacity.





PROPOSED CSJ	GROUPED PROJECT CATEGORY	DEFINITION
5000-00-956	Landscaping	Project consisting of typical right-of-way landscape development, establishment and aesthetic improvements to include any associated erosion control and environmental mitigation activities.
5800-00-915	Intelligent Transportation System Deployment	Highway traffic operation improvement projects including the installation of ramp metering control devices, variable message signs, traffic monitoring equipment and projects in the Federal ITS/IVHS programs.
5000-00-916	Bicycle and Pedestrian	Projects including bicycle and pedestrian lanes, paths and facilities (e.g., sidewalks, shared use paths, side paths, trails, bicycle boulevards, curb extensions, bicycle parking facilities, bikeshare facilities, etc.). Safe Routes to School non-infrastructure related activities (e.g. enforcement, tools, and education programs).
5000-00-917	Safety Rest Areas and Truck Weigh Stations.	Construction and improvement of rest areas, and truck weigh stations.
5000-00-918	Transit Improvements and Programs	Projects include the construction and improvement of small passenger shelters and information kiosks. Also includes the construction and improvement of rail storage/maintenance facilities bus transfer facilities where minor amounts of additional land are required and there is not a substantial increase in the number of users. Also includes transit operating assistance, preventative maintenance of transit vehicles and facilities. acquisition of third-party transit services, and transit marketing, and mobility management/coordination. Additionally, includes the purchase of new buses and rail cars to replace existing vehicles or for minor expansions of the fleet [See Note 4].
5000-00-919	Recreational Trails Program	Off-Highway Vehicle (OHV), Equestrian, Recreational Water/Paddling Trails and related facilities; Recreational Trails related education and safety programs.

**Note 1:** Projects eligible for grouping include associated project phases (Preliminary Engineering, Right-Of-Way and Construction).

**Note 2:** Projects funded with Congestion Mitigation Air Quality funding require a Federal eligibility determination, and are not approved to be grouped.

**Note 3:** Passing lanes include "SUPER 2" lanes consistent with TxDOT's Roadway Design Manual.

**Note 4:** In PM10 and PM2.5 nonattainment or maintenance areas, such projects may be grouped only if they are in compliance with control measures in the applicable implementation plan.

**Note 5:** Projects funded as part of the Recreational Trails Program (RTP) and Transportation Alternatives (TA) Program consistent with the grouped project category definitions may be grouped. RTP or TA funded projects that are not consistent with the grouped project category definitions must be individually noted in the Transportation Improvement Program (TIP) and State Transportation Improvement Program (STIP). Road diet projects may not be grouped.



---

## XI. FEDERAL HIGHWAY NON-GROUPED PROJECTS AND FINANCIAL SUMMARY

Laredo Webb County Area MPO

Short Range Projects Identified in the Metropolitan Transportation Plan (MTP) and Listed in the Transportation Improvement Program (TIP)

	CSJ	PROJECT NAME	SCOPE	FROM	TO	PROJECT SPONSOR	CATEGORY	YOE COST
<b>FY 2023</b>								
1	0922-33-166	Reuthinger Road	New location construction of 4-lane divided highway	0.1 mile East of Beltway Parkway	IH 35 West Frontage road	City	7	\$21,440,668
2	0922-33-165	Hachar Roadway Road	New location construction of 4-lane divided highway	FM 1472	0.100 miles E of Beltway Parkway	City	7, 7_CRRSAA, 3LC	\$32,514,912
3	0922-33-181	Improvement of 17 Bus Stops	Improve connections, accessibility and security for up to 17 bus stops	various locations		TxDOT	9-TAP	\$225,000
4	0086-01-073	SH 359 Widening	Widen roadway from 3-lane to 5-lane undivided Highway	4.06 miles E of SL 20	8.935 miles E of SL 20	TxDOT	11, 12	\$25,000,000
5	0086-02-023	SH 359 Widening	Widen roadway from 2-lane to 4-lane divided highway	8.935 miles E of SL 20	9.830 miles E of SL 20	TxDOT	11	\$6,000,000
6	0086-14-088	US 59 (Loop 20) Reconstruction	Reconstruction of existing 6-lane divided highway to proposed 6-lane freeway facility with 3-lane frontage roads at University Blvd. to Shiloh Dr.	0.36 mi South of University Blvd	0.51 mi South of Shiloh Dr.	TxDOT	2U, 10, 11,	\$45,394,778
7	0086-14-076	US 59 (Loop 20) Interchange at Shiloh Dr.	Construction of interchange at Shiloh Dr.	0.50 mi S of Shiloh Dr.	0.50 mi N of Shiloh Dr.	TxDOT	2M, 10	\$31,856,549
8	0086-14-089	US 59 (Loop 20) Reconstruction	Reconstruction of existing 6-lane highway to proposed 6-lane freeway with 3-lane frontage roads	0.51 mi South of Shiloh	International Blvd.	TxDOT	2U, 10, 11	\$38,390,491
9	0086-14-079	US 59 (Loop 20) Interchange at University Blvd.	Construction of Interchange at University Blvd.	0.50 mi s of University Blvd.	0.50 mi n of University Blvd.	TxDOT	2M, 10	\$19,364,639
10	0086-14-075	US 59 (Loop 20) Interchange at Del Mar	Construction of Interchange at Del Mar Blvd.	0.50 mi South of Del Mar Blvd.	0.50 mi North of Del Mar Blvd.	TxDOT	2M, 10	\$28,446,123
11	0922-33-177	River Vega Trail	Construct hike & bike trail	Anna Park	LCC Campus	City	9-TAP	\$696,850
<b>11 Projects</b>								<b>Total: \$249,330,010</b>

**Funding Category Types**

**CAT 1:** Preventive Maintenance and Rehabilitation

**CAT 2** Metro Corridor Projects

**CAT 3** Non Traditionally Funded - includes local funds, proposition 12 or 14, etc.

**CAT 7:** Metro Mobility and Rehabilitation

**CAT 9:** Transportation Enhancement (TE) and Transportation Alternative Program (TAP)

**CAT 10:** Supplemental Projects include CBI and Earmark funds

**CAT 11:** District Discretionary

**CAT 12:** Strategic Priority - addresses project with priority to State

**Prop 1:** Proposition 1: Effective in 2015 Highway Trust Fund allocation from gas tax revenue

**Prop 7:** Proposition 7 : MPO allocations from formula funds diverted from state general sales, use tax, vehicle sales, and rental tax

Laredo Webb County Area MPO

Short Range Projects Identified in the Metropolitan Transportation Plan (MTP) and Listed in the Transportation Improvement Program (TIP)

	CSJ	PROJECT NAME	SCOPE	FROM	TO	PROJECT SPONSOR	CATEGORY	YOE COST
<b>FY 2024</b>								
1	0922-33-213	World Trade Bridge Expansion	Preliminary engineering and construction for the expansion of the World Trade Bridge consisting of 8 lanes by building a new 8 lane bridge adjacent to the existing bridge for a total of 16 lanes after completion of the project.	World Trade Bridge		City	7, 3LC	\$12,000,000
2	0086-14-087	US 59 (Loop 20) Reconstruction	Reconstruction of existing 6-lane highway to proposed 6-lane freeway facility with 3-lane frontage roads at 0.4 mi N of airport to University Blvd.	0.4 mi North of E Corridor Rd (Airport).	0.36 mi South of University Blvd.	TxDOT	12	\$30,600,000
3	0086-14-086	US 59 (Loop 20) Reconstruction	Reconstruction of existing 6-lane divided highway to proposed 6-lane freeway facility with a section including 3-lane frontage roads at US 59 to 0.4 mi N of airport.	US 59	0.4 mi North of E Corridor Rd. (Airport)	TxDOT	12	\$29,290,676
4	0086-14-077	US 59 (Loop 20) Interchange at Airport	Construction of interchange at Airport	0.500 mi South of E Corridor Rd (Airport).	0.50 mi North of E Corridor Rd (Airport).	TxDOT	2M, 12	\$28,774,986
5	0086-14-078	US 59 (Loop 20) Interchange at Jacaman Rd.	Construction of interchange at Jacaman Rd.	0.50 mi s of Jacaman Rd	0.50 mi n of Jacaman Rd	TxDOT	12, 2M	\$24,433,991
<b>5 Projects</b>							<b>Total:</b>	<b>\$125,099,653</b>

**Funding Category Types**

**CAT 1:** Preventive Maintenance and Rehabilitation

**CAT 2:** Metro Corridor Projects

**CAT 3:** Non Traditionally Funded - includes local funds, proposition 12 or 14, etc.

**CAT 7:** Metro Mobility and Rehabilitation

**CAT 9:** Transportation Enhancement (TE) and Transportation Alternative Program (TAP)

**CAT 10:** Supplemental Projects include CBI and Earmark funds

**CAT 11:** District Discretionary

**CAT 12:** Strategic Priority - addresses project with priority to State

**Prop 1:** Proposition 1: Effective in 2015 Highway Trust Fund allocation from gas tax revenue

**Prop 7:** Proposition 7 : MPO allocations from formula funds diverted from state general sales, use tax, vehicle sales, and rental tax

**Laredo Webb County Area MPO**  
**Short Range Projects Identified in the Metropolitan Transportation Plan (MTP) and Listed in the Transportation Improvement Program (TIP)**

	CSJ	PROJECT NAME	SCOPE	FROM	TO	PROJECT SPONSOR	CATEGORY	YOE COST
<b>FY 2025</b>								
1	0018-05-089		Replacement of bridge structure at Uniroyal Dr.	0.5 mi south of Uniroyal Interchange	2.68 mi north of Uniroyal Interchange	TxDOT	12, 4	\$110,000,000
<b>1 Project</b>							<b>Total:</b>	<b>\$110,000,000</b>

**Funding Category Types**

**CAT 1:** Preventive Maintenance and Rehabilitation

**CAT 2:** Metro Corridor Projects

**CAT 3:** Non Traditionally Funded - includes local funds, proposition 12 or 14, etc.

**CAT 7:** Metro Mobility and Rehabilitation

**CAT 9:** Transportation Enhancement (TE) and Transportation Alternative Program (TAP)

**CAT 10:** Supplemental Projects include CBI and Earmark funds

**CAT 11:** District Discretionary

**CAT 12:** Strategic Priority - addresses project with priority to State

**Prop 1:** Proposition 1: Effective in 2015 Highway Trust Fund allocation from gas tax revenue

**Prop 7:** Proposition 7 : MPO allocations from formula funds diverted from state general sales, use tax, vehicle sales, and rental tax

**Laredo Webb County Area MPO**  
**Short Range Projects Identified in the Metropolitan Transportation Plan (MTP) and Listed in the Transportation Improvement Program (TIP)**

	CSJ	PROJECT NAME	SCOPE	FROM	TO	PROJECT SPONSOR	CATEGORY	YOE COST
<b>FY 2026</b>								
1	0018-06-185		New Direct Connector (#3) south of IH35 to east I-69W	0.5 mi east of IH35	0.5 mi north of US59	TxDOT	12	\$39,200,000
<b>1 Project</b>							<b>Total:</b>	<b>\$39,200,000</b>

**Funding Category Types**

**CAT 1:** Preventive Maintenance and Rehabilitation

**CAT 2:** Metro Corridor Projects

**CAT 3:** Non Traditionally Funded - includes local funds, proposition 12 or 14, etc.

**CAT 7:** Metro Mobility and Rehabilitation

**CAT 9:** Transportation Enhancement (TE) and Transportation Alternative Program (TAP)

**CAT 10:** Supplemental Projects include CBI and Earmark funds

**CAT 11:** District Discretionary

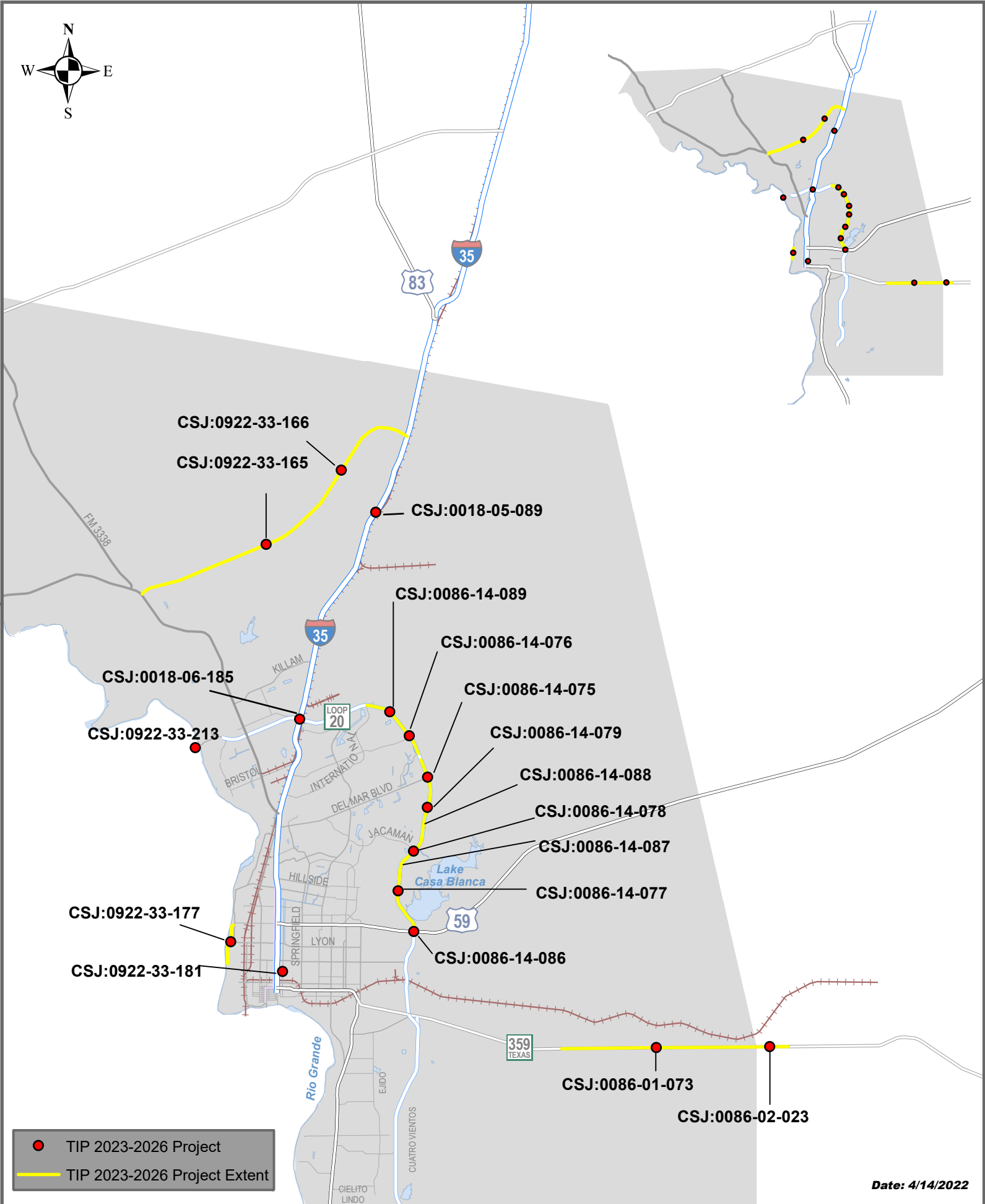
**CAT 12:** Strategic Priority - addresses project with priority to State

**Prop 1:** Proposition 1: Effective in 2015 Highway Trust Fund allocation from gas tax revenue

**Prop 7:** Proposition 7 : MPO allocations from formula funds diverted from state general sales, use tax, vehicle sales, and rental tax



# 2023-2026 TIP LOCATIONS OF PROJECTS



CSJ:0922-33-166

CSJ:0922-33-165

CSJ:0018-05-089

CSJ:0086-14-089

CSJ:0086-14-076

CSJ:0086-14-075

CSJ:0086-14-079

CSJ:0086-14-088

CSJ:0086-14-078

CSJ:0086-14-087

CSJ:0086-14-077

CSJ:0086-14-086

CSJ:0086-01-073

CSJ:0086-02-023

CSJ:0018-06-185

CSJ:0922-33-213

CSJ:0922-33-177

CSJ:0922-33-181

- TIP 2023-2026 Project
- TIP 2023-2026 Project Extent

**CSJ 0086-14-088**

District Laredo	MPO Laredo	County Webb	CSJ 0086-14-088	TIP FY 2023	HWY US 59	Phase C	City Laredo	YOE Cost \$ 45,394,778.00
--------------------	---------------	----------------	--------------------	----------------	--------------	------------	----------------	------------------------------

Limits From: 0.36 MI SOUTH OF UNIVERSITY BLVD  
 Limits To: 0.51 MI SOUTH OF SHILOH DR  
 Project DESCR: RECONSTRUCTION OF EXISTING 6-LANE DIVIDED HIGHWAY TO PROPOSED 6-LANE FREEWAY FACILITY WITH 3-LANE FRONTAGE ROADS AT  
 Remarks P7:

Project Sponsor  
 Revision Date  
 MPO Proj Num  
 Funding Cat(S) 2U, 10, 11  
 Project History

**Authorized Funding By Category/Share**

Category	Federal	State	Regional	Local	Local Contributions	Total
2U	\$ 9,200,000.00	\$ 2,300,000.00	\$ -	\$ -	-	\$ 11,500,000.00
10	\$ 17,600,000.00	\$ 4,400,000.00	\$ -	\$ -	-	\$ 22,000,000.00
11	\$ 9,515,822.40	\$ 2,378,955.60	\$ -	\$ -	-	\$ 11,894,778.00
<b>Total</b>	<b>\$ 36,315,822.40</b>	<b>\$ 9,078,955.60</b>	<b>\$ -</b>	<b>\$ -</b>	<b>-</b>	<b>\$ 45,394,778.00</b>

**Total Project Cost Information**

Prelim Eng	\$ 2,224,345.00
ROW Purch	\$ 47,215,397.00
Const Cost	\$ 45,394,778.00
Const Eng	\$ 1,579,739.00
Conting	\$ 54,474.00
Indirect	\$ -
Bond Fin	\$ -
Pt Chg Ord	\$ 3,282,043.00
<b>Total Cost</b>	<b>\$ 99,750,776.00</b>

**CSJ 0086-14-089**

District Laredo	MPO Laredo	County Webb	CSJ 0086-14-089	TIP FY 2023	HWY US 59	Phase C	City Laredo	YOE Cost \$ 38,390,491.00
--------------------	---------------	----------------	--------------------	----------------	--------------	------------	----------------	------------------------------

Limits From: 0.51 MI SOUTH OF SHILOH  
 Limits To: INTERNATIONAL BLVD.  
 Project DESCR: RECONSTRUCTION OF EXISTING 6-LANE DIVIDED HIGHWAY TO PROPOSED 6-LANE FREEWAY FACILITY WITH 3-LANE FRONTAGE ROADS AT S  
 Remarks P7:

Project Sponsor  
 Revision Date  
 MPO Proj Num  
 Funding Cat(S) 2U, 10, 11  
 Project History

**Authorized Funding By Category/Share**

Category	Federal	State	Regional	Local	Local Contributions	Total
2U	\$ 25,200,000.00	\$ 6,300,000.00	\$ -	\$ -	-	\$ 31,500,000.00
10	\$ 3,428,215.20	\$ 857,053.80	\$ -	\$ -	-	\$ 4,285,269.00
11	\$ 2,084,177.60	\$ 521,044.40	\$ -	\$ -	-	\$ 2,605,222.00
<b>Total</b>	<b>\$ 30,712,392.80</b>	<b>\$ 7,678,098.20</b>	<b>\$ -</b>	<b>\$ -</b>	<b>-</b>	<b>\$ 38,390,491.00</b>

**Total Project Cost Information**

Prelim Eng	\$ 1,881,135.00
ROW Purch	\$ 64,919,082.00
Const Cost	\$ 38,390,491.00
Const Eng	\$ 1,335,990.00
Conting	\$ 46,069.00
Indirect	\$ -
Bond Fin	\$ -
Pt Chg Ord	\$ 2,775,633.00
<b>Total Cost</b>	<b>\$ 109,348,400.00</b>

**CSJ 0086-01-073**

District Laredo	MPO Laredo	County Webb	CSJ 0086-01-073	TIP FY 2023	HWY SH 359	Phase C	City Laredo	YOE Cost \$ 25,000,000.00
--------------------	---------------	----------------	--------------------	----------------	---------------	------------	----------------	------------------------------

Limits From: 4.06 MILES E OF SL 20  
 Limits To: 8.935 MILES E OF SL 20  
 Project DESCR: WIDEN ROADWAY FROM 3-LANE TO 5-LANE UNDIVIDED HIGHWAY  
 Remarks P7:

Project Sponsor  
 Revision Date  
 MPO Proj Num  
 Funding Cat(S) 12,11  
 Project History

**Authorized Funding By Category/Share**

Category	Federal	State	Regional	Local	Local Contributions	Total
12	\$ 14,400,000.00	\$ 3,600,000.00	\$ -	\$ -	\$ -	\$ 18,000,000.00
11	\$ 5,600,000.00	\$ 1,400,000.00	\$ -	\$ -	\$ -	\$ 7,000,000.00
<b>Total</b>	<b>\$ 20,000,000.00</b>	<b>\$ 5,000,000.00</b>	<b>\$ -</b>	<b>\$ -</b>	<b>\$ -</b>	<b>\$ 25,000,000.00</b>

**Total Project Cost Information**

Prelim Eng	\$ 1,225,000.00
ROW Purch	\$ 2,383,783.15
Const Cost	\$ 25,000,000.00
Const Eng	\$ 1,227,500.00
Conting	\$ 565,000.00
Indirect	\$ -
Bond Fin	\$ -
Pt Chg Ord	\$ 1,305,000.00
<b>Total Cost</b>	<b>\$ 31,706,283.15</b>

**CSJ 0086-02-023**

District Laredo	MPO Laredo	County Webb	CSJ 0086-02-023	TIP FY 2023	HWY SH 359	Phase C	City Laredo	YOE Cost \$ 6,000,000.00
--------------------	---------------	----------------	--------------------	----------------	---------------	------------	----------------	-----------------------------

Limits From: 8.935 MILES E OF SL 20  
 Limits To: 9.830 MILES E OF SL 20  
 Project DESCR: WIDEN ROADWAY FROM 2-LANE TO 4-LANE DIVIDED HIGHWAY  
 Remarks P7:

Project Sponsor  
 Revision Date  
 MPO Proj Num  
 Funding Cat(S) 11  
 Project History

**Authorized Funding By Category/Share**

Category	Federal	State	Regional	Local	Local Contributions	Total
11	\$ 4,800,000.00	\$ 1,200,000.00	\$ -	\$ -	\$ -	\$ 6,000,000.00
<b>Total</b>	<b>\$ 4,800,000.00</b>	<b>\$ 1,200,000.00</b>	<b>\$ -</b>	<b>\$ -</b>	<b>\$ -</b>	<b>\$ 6,000,000.00</b>

**Total Project Cost Information**

Prelim Eng	\$ 294,000.00
ROW Purch	\$ 720,731.78
Const Cost	\$ 6,000,000.00
Const Eng	\$ 294,600.00
Conting	\$ 135,600.00
Indirect	\$ -
Bond Fin	\$ -
Pt Chg Ord	\$ 313,200.00
<b>Total Cost</b>	<b>\$ 7,758,131.78</b>

**CSJ 0086-14-075**

District Laredo	MPO Laredo	County Webb	CSJ 0086-14-075	TIP FY 2023	HWY US 59	Phase C	City Laredo	YOE Cost \$ 28,446,123.00
--------------------	---------------	----------------	--------------------	----------------	--------------	------------	----------------	------------------------------

Limits From: 0.50 MI S OF DEL MAR BLVD  
 Limits To: 0.50 MI N OF DEL MAR BLVD  
 Project DESCR: CONSTRUCTION OF INTERCHANGE AT DEL MAR BLVD  
 Remarks P7:

Project Sponsor  
 Revision Date  
 MPO Proj Num  
 Funding Cat(S) 2M,10  
 Project History

**Authorized Funding By Category/Share**

Category	Federal	State	Regional	Local	Local Contributions	Total
2M	\$ 19,280,000.00	\$ 4,820,000.00	\$ -	\$ -	\$ -	\$ 24,100,000.00
10	\$ 3,476,898.40	\$ 869,224.60	\$ -	\$ -	\$ -	\$ 4,346,123.00
<b>Total</b>	<b>\$ 22,756,898.40</b>	<b>\$ 5,689,224.60</b>	<b>\$ -</b>	<b>\$ -</b>	<b>\$ -</b>	<b>\$ 28,446,123.00</b>

**Total Project Cost Information**

Prelim Eng	\$ 1,393,861.00
ROW Purch	\$ -
Const Cost	\$ 28,446,123.00
Const Eng	\$ 1,413,773.00
Conting	\$ 711,154.00
Indirect	\$ -
Bond Fin	\$ -
Pt Chg Ord	\$ 944,412.00
<b>Total Cost</b>	<b>\$ 32,909,323.00</b>

**CSJ 0086-14-076**

District Laredo	MPO Laredo	County Webb	CSJ 0086-14-076	TIP FY 2023	HWY US 59	Phase C	City Laredo	YOE Cost \$ 31,856,549.00
--------------------	---------------	----------------	--------------------	----------------	--------------	------------	----------------	------------------------------

Limits From: 0.50 MI S OF SHILOH DR  
 Limits To: 0.50 MI N OF SHILOH DR  
 Project DESCR: CONSTRUCTION OF INTERCHANGE AT SHILOH DR  
 Remarks P7:

Project Sponsor  
 Revision Date  
 MPO Proj Num  
 Funding Cat(S) 2M,10  
 Project History

**Authorized Funding By Category/Share**

Category	Federal	State	Regional	Local	Local Contributions	Total
2M	\$ 17,200,000.00	\$ 4,300,000.00	\$ -	\$ -	\$ -	\$ 21,500,000.00
10	\$ 8,285,239.20	\$ 2,071,309.80	\$ -	\$ -	\$ -	\$ 10,356,549.00
<b>Total</b>	<b>\$ 25,485,239.20</b>	<b>\$ 6,371,309.80</b>	<b>\$ -</b>	<b>\$ -</b>	<b>\$ -</b>	<b>\$ 31,856,549.00</b>

**Total Project Cost Information**

Prelim Eng	\$ 1,560,971.00
ROW Purch	\$ -
Const Cost	\$ 31,856,549.00
Const Eng	\$ 1,583,271.00
Conting	\$ 796,414.00
Indirect	\$ -
Bond Fin	\$ -
Pt Chg Ord	\$ 1,057,638.00
<b>Total Cost</b>	<b>\$ 36,854,843.00</b>

**CSJ 0086-14-079**

District Laredo	MPO Laredo	County Webb	CSJ 0086-14-079	TIP FY 2023	HWY US 59	Phase C	City Laredo	YOE Cost \$ 19,364,639.00
--------------------	---------------	----------------	--------------------	----------------	--------------	------------	----------------	------------------------------

Limits From: 0.50 MI S OF UNIVERSITY BLVD  
 Limits To: 0.50 MI N OF UNIVERSITY BLVD  
 Project DESCR: CONSTRUCTION OF INTERSHANGE AT UNIVERSITY BLVD  
 Remarks P7:

Project Sponsor  
 Revision Date  
 MPO Proj Num  
 Funding Cat(S) 2M, 10  
 Project History

**Authorized Funding By Category/Share**

Category	Federal	State	Regional	Local	Local Contributions	Total
2M	\$ 13,480,000.00	\$ 3,370,000.00	\$ -	\$ -	\$ -	\$ 16,850,000.00
10	\$ 2,011,711.20	\$ 502,927.80	\$ -	\$ -	\$ -	\$ 2,514,639.00
<b>Total</b>	<b>\$ 15,491,711.20</b>	<b>\$ 3,872,927.80</b>	<b>\$ -</b>	<b>\$ -</b>	<b>\$ -</b>	<b>\$ 19,364,639.00</b>

**Total Project Cost Information**

Prelim Eng	\$ 948,868.00
ROW Purch	\$ -
Const Cost	\$ 19,364,639.00
Const Eng	\$ 962,423.00
Conting	\$ 484,116.00
Indirect	\$ -
Bond Fin	\$ -
Pt Chg Ord	\$ 642,907.00
<b>Total Cost</b>	<b>\$ 22,402,953.00</b>

**CSJ 0922-33-165**

District Laredo	MPO Laredo	County Webb	CSJ 0922-33-165	TIP FY 2023	HWY CS	Phase C	City Laredo	YOE Cost \$ 32,514,912.00
--------------------	---------------	----------------	--------------------	----------------	-----------	------------	----------------	------------------------------

Limits From: FM 1472  
 Limits To: 0.100 MILES E OF BELTWAY PARKWAY  
 Project DESCR: NEW LOCATION CONSTRUCTION OF 4-LANE DIVIDED HIGHWAY  
 Remarks P7: HACHAR ROADWAY - LOCAL

Project Sponsor  
 Revision Date  
 MPO Proj Num  
 Funding Cat(S) 7,3LC  
 Project History

**Authorized Funding By Category/Share**

Category	Federal	State	Regional	Local	Local Contributions	Total
7	\$ 22,744,943.00	\$ 4,037,228.00	\$ -	\$ 1,649,009.00	\$ -	\$ 28,431,178.00
7	\$ 2,341,935.00	\$ -	\$ -	\$ -	\$ -	\$ 2,341,935.00
3LC	\$ -	\$ -	\$ -	\$ -	\$ 1,741,799.00	\$ 1,741,799.00
<b>Total</b>	<b>\$ 25,086,878.00</b>	<b>\$ 4,037,228.00</b>	<b>\$ -</b>	<b>\$ 1,649,009.00</b>	<b>\$ 1,741,799.00</b>	<b>\$ 32,514,912.00</b>

**Total Project Cost Information**

Prelim Eng	\$ 1,593,231.00
ROW Purch	\$ -
Const Cost	\$ 32,514,912.00
Const Eng	\$ 1,609,489.00
Conting	\$ 325,150.00
Indirect	\$ -
Bond Fin	\$ -
Pt Chg Ord	\$ 2,032,182.00
<b>Total Cost</b>	<b>\$ 38,074,964.00</b>

**CSJ 0922-33-166**

District Laredo	MPO Laredo	County Webb	CSJ 0922-33-166	TIP FY 2023	HWY CS	Phase C	City Laredo	YOE Cost \$ 21,440,668.00
--------------------	---------------	----------------	--------------------	----------------	-----------	------------	----------------	------------------------------

Limits From: 0.1 MILE EAST OF BELTWAY PARKWAY  
 Limits To: IH 35 WEST FRONTAGE ROAD  
 Project DESCR: NEW LOCATION CONSTRUCTION OF 4-LANE DIVIDED HIGHWAY  
 Remarks P7: REUTHINGER ROAD - LOCAL

Project Sponsor  
 Revision Date  
 MPO Proj Num  
 Funding Cat(S) 7, 10  
 Project History

**Authorized Funding By Category/Share**

Category	Federal	State	Regional	Local	Local Contributions	Total
7	\$ 17,152,534.40	\$ -	\$ -	\$ 4,288,133.60	\$ -	\$ 21,440,668.00
<b>Total</b>	<b>\$ 17,152,534.40</b>	<b>\$ -</b>	<b>\$ -</b>	<b>\$ 4,288,133.60</b>	<b>\$ -</b>	<b>\$ 21,440,668.00</b>

**Total Project Cost Information**

Prelim Eng	\$ 1,050,593.00
ROW Purch	\$ -
Const Cost	\$ 21,440,668.00
Const Eng	\$ 1,061,314.00
Conting	\$ 214,407.00
Indirect	\$ -
Bond Fin	\$ -
Pt Chg Ord	\$ 1,340,042.00
<b>Total Cost</b>	<b>\$ 25,107,024.00</b>

**CSJ 0922-33-181**

District Laredo	MPO Laredo	County Webb	CSJ 0922-33-181	TIP FY 2023	HWY CS	Phase C	City Laredo	YOE Cost \$ 225,000.00
--------------------	---------------	----------------	--------------------	----------------	-----------	------------	----------------	---------------------------

Limits From: ADA BUS STOPS AND BICYCLE PLAZAS

Limits To: .

Project DESCR: IMPROVE CONNECTIONS, ACCESSIBILITY AND SECURITY FOR UP TO 17 BUS STOPS

Remarks P7:

Project Sponsor  
Revision Date  
MPO Proj Num  
Funding Cat(S) 9TAP  
Project History

**Authorized Funding By Category/Share**

Category	Federal	State	Regional	Local	Local Contributions	Total
9TAP	\$ 180,000.00	\$ -	\$ -	\$ -	\$ 45,000.00	\$ -
<b>Total</b>	<b>\$ 180,000.00</b>	<b>\$ -</b>	<b>\$ -</b>	<b>\$ -</b>	<b>\$ 45,000.00</b>	<b>\$ 225,000.00</b>

**Total Project Cost Information**

Prelim Eng	\$ -
ROW Purch	\$ -
Const Cost	\$ 225,000.00
Const Eng	\$ -
Conting	\$ -
Indirect	\$ -
Bond Fin	\$ -
Pt Chg Ord	\$ -
<b>Total Cost</b>	<b>\$ 225,000.00</b>

**CSJ 0922-33-177**

District Laredo	MPO Laredo	County Webb	CSJ 0922-33-177	TIP FY 2023	HWY CS	Phase C	City Laredo	YOE Cost \$ 696,850.00
--------------------	---------------	----------------	--------------------	----------------	-----------	------------	----------------	---------------------------

Limits From: ANA PARK

Limits To: LCC CAMPUS

Project DESCR: CONSTRUCTION OF RIVER VEGA MULTIUSE ALTERNATIVE TRANSPORTATION TRAIL

Remarks P7:

Project Sponsor  
Revision Date  
MPO Proj Num  
Funding Cat(S) 9TAP  
Project History

**Authorized Funding By Category/Share**

Category	Federal	State	Regional	Local	Local Contributions	Total
9TAP	\$ 557,480.00	\$ -	\$ -	\$ -	\$ 139,370.00	\$ -
<b>Total</b>	<b>\$ 557,480.00</b>	<b>\$ -</b>	<b>\$ -</b>	<b>\$ -</b>	<b>\$ 139,370.00</b>	<b>\$ 696,850.00</b>

**Total Project Cost Information**

Prelim Eng	\$ 34,146.00
ROW Purch	\$ -
Const Cost	\$ 696,850.00
Const Eng	\$ 27,944.00
Conting	\$ 9,896.00
Indirect	\$ -
Bond Fin	\$ -
Pt Chg Ord	\$ -
<b>Total Cost</b>	<b>\$ 768,836.00</b>



**CSJ 0086-14-087**

District	MPO	County	CSJ	TIP FY	HWY	Phase	City	YOE Cost
Laredo	Laredo	Webb	0086-14-087	2024	US 59	C	Laredo	\$ 30,600,000.00
Limits From: 0.4 MI NORTH OF E CORRIDOR RD (AIRPORT)						Project Sponsor		
Limits To: 0.36 MI SOUTH OF UNIVERSITY BLVD						Revision Date		
Project DESCR: RECONSTRUCTION OF EXISTING 6-LANE DIVIDED HIGHWAY TO PROPOSED 6-LANE FREEWAY FACILITY WITH 3-LANE FRONTAGE ROADS AT 0.4 MI N OF AIRPORT TO UNIVERSITY BLVD						MPO Proj Num		
Remarks P7:						Funding Cat(S)	12	
						Project History		

**Authorized Funding By Category/Share**

Category	Federal	State	Regional	Local	Local Contributions	Total
12	\$ 24,480,000.00	\$ 6,120,000.00	\$ -	\$ -	\$ -	\$ 30,600,000.00
<b>Total</b>	<b>\$ 24,480,000.00</b>	<b>\$ 6,120,000.00</b>	<b>\$ -</b>	<b>\$ -</b>	<b>\$ -</b>	<b>\$ 30,600,000.00</b>

**Total Project Cost Information**

Prelim Eng	\$ 1,499,400.00
ROW Purch	\$ 58,947,030.00
Const Cost	\$ 30,600,000.00
Const Eng	\$ 1,064,880.00
Conting	\$ 36,720.00
Indirect	\$ -
Bond Fin	\$ -
Pt Chg Ord	\$ 2,212,380.00
<b>Total Cost</b>	<b>\$ 94,360,410.00</b>

**CSJ 0086-14-086**

District	MPO	County	CSJ	TIP FY	HWY	Phase	City	YOE Cost
Laredo	Laredo	Webb	0086-14-086	2024	US 59	C	Laredo	\$ 29,290,676.00
Limits From: US 59						Project Sponsor		
Limits To: 0.4 MI MORTH OF E CORRIDOR RD (AIRPORT)						Revision Date		
Project DESCR: RECONSTRUCTION OF EXISTING 6-LANE DIVIDED HIGHWAY TO PROPOSED 6 TO 8-LANE FREEWAY FACILITY WITH A SECTION INCLUDING 3-LANE FRONTAGE ROADS AT US 59 TO 0.4 MI N OF AIRPORT						MPO Proj Num		
Remarks P7:						Funding Cat(S)	12	
						Project History		

**Authorized Funding By Category/Share**

Category	Federal	State	Regional	Local	Local Contributions	Total
12	\$ 23,432,540.80	\$ 5,858,135.20	\$ -	\$ -	\$ -	\$ 29,290,676.00
<b>Total</b>	<b>\$ 23,432,540.80</b>	<b>\$ 5,858,135.20</b>	<b>\$ -</b>	<b>\$ -</b>	<b>\$ -</b>	<b>\$ 29,290,676.00</b>

**Total Project Cost Information**

Prelim Eng	\$ 1,435,244.00
ROW Purch	\$ 48,377,844.00
Const Cost	\$ 29,290,676.00
Const Eng	\$ 1,019,316.00
Conting	\$ 35,149.00
Indirect	\$ -
Bond Fin	\$ -
Pt Chg Ord	\$ 2,117,716.00
<b>Total Cost</b>	<b>\$ 82,275,945.00</b>

**CSJ 0086-14-078**

District	MPO	County	CSJ	TIP FY	HWY	Phase	City	YOE Cost
Laredo	Laredo	Webb	0086-14-078	2024	US 59	C	Laredo	\$ 24,433,991.00

Limits From: 0.50 MI S OF JACAMAN RD  
 Limits To: 0.50 MI N OF JACAMAN RD  
 Project DESCR: CONSTRUCTION OF INTERCHANGE AT JACAMAN RD  
 Remarks P7:

Project Sponsor  
 Revision Date  
 MPO Proj Num  
 Funding Cat(S) 12, 2M  
 Project History

**Authorized Funding By Category/Share**

Category	Federal	State	Regional	Local	Local Contributions	Total
12	\$ 17,394,053.60	\$ 4,348,513.40	\$ -	\$ -	\$ -	\$ 21,742,567.00
2M	\$ 2,153,139.20	\$ 538,284.80	\$ -	\$ -	\$ -	\$ 2,691,424.00
<b>Total</b>	<b>\$ 19,547,192.80</b>	<b>\$ 4,886,798.20</b>	<b>\$ -</b>	<b>\$ -</b>	<b>\$ -</b>	<b>\$ 24,433,991.00</b>

**Total Project Cost Information**

Prelim Eng	\$ 1,197,266.00
ROW Purch	\$ -
Const Cost	\$ 24,433,991.00
Const Eng	\$ 1,214,370.00
Conting	\$ 610,850.00
Indirect	\$ -
Bond Fin	\$ -
Pt Chg Ord	\$ 811,209.00
<b>Total Cost</b>	<b>\$ 28,267,686.00</b>

**CSJ 0086-14-077**

District	MPO	County	CSJ	TIP FY	HWY	Phase	City	YOE Cost
Laredo	Laredo	Webb	0086-14-077	2024	US 59	C	Laredo	\$ 28,774,986.00

Limits From: 0.500 MI SOUTH OF E CORRIDOR RD (AIRPORT)  
 Limits To: 0.50 MI NORTH OF E CORRIDOR RD (AIRPORT)  
 Project DESCR: CONSTRUCTION OF INTERCHANGE AT AIRPORT  
 Remarks P7: HWY CHANGE FROM SL 20 TO US 59

Project Sponsor  
 Revision Date  
 MPO Proj Num  
 Funding Cat(S) 2M, 12  
 Project History

**Authorized Funding By Category/Share**

Category	Federal	State	Regional	Local	Local Contributions	Total
2M	\$ 9,884,792.00	\$ 2,471,198.00	\$ -	\$ -	\$ -	\$ 12,355,990.00
12	\$ 13,135,196.80	\$ 3,283,799.20	\$ -	\$ -	\$ -	\$ 16,418,996.00
<b>Total</b>	<b>\$ 23,019,988.80</b>	<b>\$ 5,754,997.20</b>	<b>\$ -</b>	<b>\$ -</b>	<b>\$ -</b>	<b>\$ 28,774,986.00</b>

**Total Project Cost Information**

Prelim Eng	\$ 1,409,975.00
ROW Purch	\$ -
Const Cost	\$ 28,774,986.00
Const Eng	\$ 1,430,117.00
Conting	\$ 719,375.00
Indirect	\$ -
Bond Fin	\$ -
Pt Chg Ord	\$ 955,330.00
<b>Total Cost</b>	<b>\$ 33,289,783.00</b>

**CSJ 0922-33-213**

District	MPO	County	CSJ	TIP FY	HWY	Phase	City	YOE Cost
Laredo	Laredo	Webb	0922-33-213	2024	CS	C	Laredo	\$ 12,000,000.00

Limits From: WORLD TRADE BRIDGE  
 Limits To: WORLD TRADE BRIDGE  
 Project DESCR: PRELIMINARY ENGINEERING AND CONSTRUCTION FOR THE EXPANSION OF THE WORLD TRADE BRIDGE CONSISTION OF 8 LANES BY BUILDING A NEW  
 Remarks P7:

Project Sponsor  
 Revision Date  
 MPO Proj Num  
 Funding Cat(S) 3,7  
 Project History  
 CITY OF LAREDO  
 02/2022  
 1113

**Authorized Funding By Category/Share**

Category	Federal	State	Regional	Local	Local Contributions	Total
3	\$ -	\$ -	\$ -	\$ -	\$ 10,750,000.00	\$ 10,750,000.00
7	\$ 1,000,000.00	\$ -	\$ -	\$ 250,000.00	\$ -	\$ 1,250,000.00
<b>Total</b>	<b>\$ 1,000,000.00</b>	<b>\$ -</b>	<b>\$ -</b>	<b>\$ 250,000.00</b>	<b>\$ 10,750,000.00</b>	<b>\$ 12,000,000.00</b>

**Total Project Cost Information**

Prelim Eng	\$ -
ROW Purch	\$ -
Const Cost	\$ 12,000,000.00
Const Eng	\$ -
Conting	\$ -
Indirect	\$ -
Bond Fin	\$ -
Pt Chg Ord	\$ -
<b>Total Cost</b>	<b>\$ 12,000,000.00</b>

**CSJ 0018-05-089**

District	MPO	County	CSJ	TIP FY	HWY	Phase	City	YOE Cost
Laredo	Laredo	Webb	0018-05-089	2025	IH 35	C	Laredo	\$ 110,000,000.00

Limits From: 0.500 MI S OF UNIROYAL INTERCHANGE  
 Limits To: 2.68 MI N OF UNIROYAL INTERCHANGE  
 Project DESCR: REPLACEMENT OF BRIDGE STRUCTURE AT UNIROYAL DRIVE  
 Remarks P7:

Project Sponsor  
 Revision Date  
 MPO Proj Num  
 Funding Cat(S) 12, 4  
 Project History

**Authorized Funding By Category/Share**

Category	Federal	State	Regional	Local	Local Contributions	Total
12	\$ 36,000,000.00	\$ 9,000,000.00	\$ -	\$ -	\$ -	\$ 45,000,000.00
4	\$ 52,000,000.00	\$ 13,000,000.00	\$ -	\$ -	\$ -	\$ 65,000,000.00
<b>Total</b>	<b>\$ 88,000,000.00</b>	<b>\$ 22,000,000.00</b>	<b>\$ -</b>	<b>\$ -</b>	<b>\$ -</b>	<b>\$ 110,000,000.00</b>

**Total Project Cost Information**

Prelim Eng	\$ 5,390,000.00
ROW Purch	\$ -
Const Cost	\$ 110,000,000.00
Const Eng	\$ 6,193,000.00
Conting	\$ 561,000.00
Indirect	\$ -
Bond Fin	\$ -
Pt Chg Ord	\$ 3,179,000.00
<b>Total Cost</b>	<b>\$ 125,323,000.00</b>

**CSJ 0018-06-185**

District	MPO	County	CSJ	TIP FY	HWY	Phase	City	YOE Cost
Laredo	Laredo	Webb	0018-06-185	2026	IH 35	C	Laredo	\$ 39,200,000.00

Limits From: 0.50 MI EAST OF IH35

Limits To: 0.50 MI NORTH OF US59

Project DESCR: NEW DIRECT CONNECTOR (#3 AND #6) NORTHBOUND AND SOUTHBOUND IH35 TO US59 EB

Remarks P7:

Project Sponsor

Revision Date

MPO Proj Num

Funding Cat(S)

Project History

12

**Authorized Funding By Category/Share**

Category	Federal	State	Regional	Local	Local Contributions	Total
12	\$ 31,360,000.00	\$ 7,840,000.00	\$ -	\$ -	\$ -	\$ 39,200,000.00
<b>Total</b>	<b>\$ 31,360,000.00</b>	<b>\$ 7,840,000.00</b>	<b>\$ -</b>	<b>\$ -</b>	<b>\$ -</b>	<b>\$ 39,200,000.00</b>

**Total Project Cost Information**

Prelim Eng	\$ 1,920,800.00
ROW Purch	\$ -
Const Cost	\$ 39,200,000.00
Const Eng	\$ 1,948,240.00
Conting	\$ 980,000.00
Indirect	\$ -
Bond Fin	\$ -
<u>Pt Chg Ord</u>	<u>\$ 1,301,440.00</u>
<b>Total Cost</b>	<b>\$ 45,350,480.00</b>



Laredo MPO - District 22  
 FY 2023 - 2026 Transportation Improvement Program

Funding by Category

Category	Description	FY 2023		FY 2024		FY 2025		FY 2026		Total FY 2023 - 2026	
		Programmed	Authorized	Programmed	Authorized	Programmed	Authorized	Programmed	Authorized	Programmed	Authorized
1	Preventive Maintenance and Rehabilitation	\$0	\$0	\$0	\$0	\$0	\$0	\$0	\$0	\$0	\$0
2	Urban Area (Non- TMA) Corridor Projects	\$105,450,000	\$105,450,000	\$15,047,414	\$15,047,414	\$0	\$0	\$0	\$0	\$120,497,414	\$120,497,414
3	Non-Traditionally Funded Transportation Project	\$1,741,799	\$1,741,799	\$10,750,000	\$10,750,000	\$0	\$0	\$0	\$0	\$12,491,799	\$12,491,799
4	Statewide Connectivity Corridor Projects	\$0	\$0	\$0	\$0	\$65,000,000	\$65,000,000	\$0	\$0	\$65,000,000	\$65,000,000
5	CMAQ	\$0	\$0	\$0	\$0	\$0	\$0	\$0	\$0	\$0	\$0
6	Structures	\$0	\$0	\$0	\$0	\$0	\$0	\$0	\$0	\$0	\$0
7	Metro Mobility & Rehab	\$52,213,781	\$52,213,781	\$1,250,000	\$1,250,000	\$0	\$0	\$0	\$0	\$53,463,781	\$53,463,781
8	Safety	\$0	\$0	\$0	\$0	\$0	\$0	\$0	\$0	\$0	\$0
9	TAP / TASA	\$921,850	\$921,850	\$0	\$0	\$0	\$0	\$0	\$0	\$921,850	\$921,850
10	Supplemental Transportation	\$0	\$0	\$0	\$0	\$0	\$0	\$0	\$0	\$0	\$0
10 CBI	Corridor Border	\$43,502,580	\$43,502,580	\$0	\$0	\$0	\$0	\$0	\$0	\$43,502,580	\$43,502,580
11	District Discretionary	\$1,500,000	\$1,500,000	\$0	\$0	\$0	\$0	\$0	\$0	\$1,500,000	\$1,500,000
11	Rider 11B	\$26,000,000	\$26,000,000	\$0	\$0	\$0	\$0	\$0	\$0	\$26,000,000	\$26,000,000
12	Strategic Priority	\$18,000,000	\$18,000,000	\$98,052,239	\$98,052,239	\$45,000,000	\$45,000,000	\$39,200,000	\$39,200,000	\$200,252,239	\$200,252,239
SBPE	Strategy Budget PE	\$0	\$0	\$0	\$0	\$0	\$0	\$0	\$0	\$0	\$0
SB 102	Strategy 102	\$0	\$0	\$0	\$0	\$0	\$0	\$0	\$0	\$0	\$0
<b>Total</b>		<b>\$249,330,010</b>	<b>\$249,330,010</b>	<b>\$125,099,653</b>	<b>\$125,099,653</b>	<b>\$110,000,000</b>	<b>\$110,000,000</b>	<b>\$39,200,000</b>	<b>\$39,200,000</b>	<b>\$523,629,663</b>	<b>\$523,629,663</b>

Funding Participation Source

Source	FY 2023	FY 2024	FY 2025	FY 2026	Total FY 23-26
<b>Federal</b>	\$198,538,956	\$91,479,722	\$88,000,000	\$31,360,000	\$409,378,679
<b>State</b>	\$42,927,744	\$22,619,931	\$22,000,000	\$7,840,000	\$95,387,675
<b>Local Match</b>	\$6,121,513	\$250,000	\$0	\$0	\$6,371,513
CAT 3 - Local Contributions (LC)	\$1,741,799	\$10,750,000	\$0	\$0	\$12,491,799
CAT 3 - Prop 1	\$0	\$0	\$0	\$0	\$0
CAT 3 - Prop 12	\$0	\$0	\$0	\$0	\$0
CAT 3 - Prop 14 Bonds	\$0	\$0	\$0	\$0	\$0
CAT 3 - Texas Mobility Fund	\$0	\$0	\$0	\$0	\$0
CAT 3 - TDC	\$0	\$0	\$0	\$0	\$0
Other - Strategy PE Budget	\$0	\$0	\$0	\$0	\$0
Other - Strategy 102 Budget	\$0	\$0	\$0	\$0	\$0
<b>Total</b>	<b>\$249,330,012</b>	<b>\$125,099,653</b>	<b>\$110,000,000</b>	<b>\$39,200,000</b>	<b>\$523,629,665</b>

## XII. TRANSIT PROJECTS AND FINANCIAL SUMMARY

## FY 2023 TRANSIT PROJECT DESCRIPTIONS

### LAREDO MPO TRANSPORTATION IMPROVEMENT PROGRAM

Laredo District 22

YOE = Year of Expenditure

<u>General Project Information</u>		<u>Funding Information (YOE)</u>	
<b>Project Sponsor</b>	City of Laredo	<b>Federal Funding Category</b>	<b>5307</b>
<b>MPO Project Information</b> (reference number, etc)		<b>Federal (FTA) Funds</b>	\$3,515,783
		<b>State Funds from TxDOT</b>	637,564
		<b>Other Funds</b>	12,677,358
<b>Apportionment Year</b>	2023	<b>Fiscal Year Cost</b>	<b>\$16,830,705</b>
<b>Project Phase</b>			
<b>Brief Project Description:</b>	Funds will be used for assistance for El Metro Transit bus operations and maintenance.	<b>Total Project Cost</b>	\$16,830,705
		<b>Trans. Dev. Credits Requested</b>	\$0
		<b>Trans. Dev. Credits Awarded</b> (Date & Amount)	\$0
<b>Sec 5307 ID Number</b>			
<b>Amendment Date &amp; Action</b>			

<u>General Project Information</u>		<u>Funding Information (YOE)</u>	
<b>Project Sponsor</b>	City of Laredo	<b>Federal Funding Category</b>	<b>5310</b>
<b>MPO Project Information</b> (reference number, etc)		<b>Federal (FTA) Funds</b>	\$172,717
		<b>State Funds from TxDOT</b>	0
		<b>Other Funds</b>	30,480
<b>Apportionment Year</b>	2023	<b>Fiscal Year Cost</b>	<b>\$203,197</b>
<b>Project Phase</b>			
<b>Brief Project Description:</b>	Funds will be use for improving mobility for seniors and individuals with disabilities by removing barriers to transportation service and expanding transportation mobility options. Projects includes Capital investment and Operating assistance.	<b>Total Project Cost</b>	\$203,197
		<b>Trans. Dev. Credits Requested</b>	\$0
		<b>Trans. Dev. Credits Awarded</b> (Date & Amount)	\$0
<b>Sec 5310 ID Number</b>			
<b>Amendment Date &amp; Action</b>			

<u>General Project Information</u>		<u>Funding Information (YOE)</u>	
<b>Project Sponsor</b>	City of Laredo	<b>Federal Funding Category</b>	<b>5339</b>
<b>MPO Project Information</b> (reference number, etc)		<b>Federal (FTA) Funds</b>	\$381,215
		<b>State Funds from TxDOT</b>	0
		<b>Other Funds</b>	67,273
<b>Apportionment Year</b>	2023	<b>Fiscal Year Cost</b>	<b>\$448,488</b>
<b>Project Phase</b>			
<b>Brief Project Description:</b>	Funds will be used for replacing heavy-duty buses and paratransit vans, and bus facility improvements.	<b>Total Project Cost</b>	\$448,488
		<b>Trans. Dev. Credits Requested</b>	\$0
		<b>Trans. Dev. Credits Awarded</b> (Date & Amount)	\$0
<b>Sec 5339 ID Number</b>			
<b>Amendment Date &amp; Action</b>			

**FY 2024 TRANSIT PROJECT DESCRIPTIONS**

**LAREDO MPO TRANSPORTATION IMPROVEMENT PROGRAM**

Laredo District 22

YOE = Year of Expenditure

<u>General Project Information</u>		<u>Funding Information (YOE)</u>	
<b>Project Sponsor</b>	City of Laredo	<b>Federal Funding Category</b>	<b>5307</b>
<b>MPO Project Information</b> (reference number, etc)		<b>Federal (FTA) Funds</b>	\$3,515,783
		<b>State Funds from TxDOT</b>	637,564
		<b>Other Funds</b>	12,677,358
<b>Apportionment Year</b>	2024	<b>Fiscal Year Cost</b>	<b>\$16,830,705</b>
<b>Project Phase</b>			
<b>Brief Project Description:</b>	Funds will be used for assistance for El Metro Transit bus operations and maintenance.	<b>Total Project Cost</b>	\$16,830,705
		<b>Trans. Dev. Credits Requested</b>	\$0
		<b>Trans. Dev. Credits Awarded</b> (Date & Amount)	\$0
<b>Sec 5307 ID Number</b>			
<b>Amendment Date &amp; Action</b>			

<u>General Project Information</u>		<u>Funding Information (YOE)</u>	
<b>Project Sponsor</b>	City of Laredo	<b>Federal Funding Category</b>	<b>5310</b>
<b>MPO Project Information</b> (reference number, etc)		<b>Federal (FTA) Funds</b>	\$172,717
		<b>State Funds from TxDOT</b>	0
		<b>Other Funds</b>	30,480
<b>Apportionment Year</b>	2024	<b>Fiscal Year Cost</b>	<b>\$203,197</b>
<b>Project Phase</b>			
<b>Brief Project Description:</b>	Funds will be use for improving mobility for seniors and individuals with disabilities by removing barriers to transportation service and expanding transportation mobility options. Projects includes Capital investment and Operating assistance.	<b>Total Project Cost</b>	\$203,197
		<b>Trans. Dev. Credits Requested</b>	\$0
		<b>Trans. Dev. Credits Awarded</b> (Date & Amount)	\$0
<b>Sec 5310 ID Number</b>			
<b>Amendment Date &amp; Action</b>			

<u>General Project Information</u>		<u>Funding Information (YOE)</u>	
<b>Project Sponsor</b>	City of Laredo	<b>Federal Funding Category</b>	<b>5339</b>
<b>MPO Project Information</b> (reference number, etc)		<b>Federal (FTA) Funds</b>	\$381,215
		<b>State Funds from TxDOT</b>	0
		<b>Other Funds</b>	67,273
<b>Apportionment Year</b>	2024	<b>Fiscal Year Cost</b>	<b>\$448,488</b>
<b>Project Phase</b>			
<b>Brief Project Description:</b>	Funds will be used for replacing heavy-duty buses and paratransit vans, and bus facility improvements.	<b>Total Project Cost</b>	\$448,488
		<b>Trans. Dev. Credits Requested</b>	\$0
		<b>Trans. Dev. Credits Awarded</b> (Date & Amount)	\$0
<b>Sec 5339 ID Number</b>			
<b>Amendment Date &amp; Action</b>			



**FY 2025 TRANSIT PROJECT DESCRIPTIONS**

**LAREDO MPO TRANSPORTATION IMPROVEMENT PROGRAM**

Laredo District 22

YOE = Year of Expenditure

<u>General Project Information</u>		<u>Funding Information (YOE)</u>	
<b>Project Sponsor</b>	City of Laredo	<b>Federal Funding Category</b>	<b>5307</b>
<b>MPO Project Information (reference number, etc)</b>		<b>Federal (FTA) Funds</b>	\$3,515,783
		<b>State Funds from TxDOT</b>	637,564
		<b>Other Funds</b>	12,677,358
<b>Apportionment Year</b>	2025	<b>Fiscal Year Cost</b>	<b>\$16,830,705</b>
<b>Project Phase</b>			
<b>Brief Project Description:</b>	Funds will be used for assistance for El Metro Transit bus operations and maintenance.	<b>Total Project Cost</b>	\$16,830,705
		<b>Trans. Dev. Credits Requested</b>	\$0
		<b>Trans. Dev. Credits Awarded (Date &amp; Amount)</b>	\$0
<b>Sec 5307 ID Number</b>			
<b>Amendment Date &amp; Action</b>			

<u>General Project Information</u>		<u>Funding Information (YOE)</u>	
<b>Project Sponsor</b>	City of Laredo	<b>Federal Funding Category</b>	<b>5310</b>
<b>MPO Project Information (reference number, etc)</b>		<b>Federal (FTA) Funds</b>	\$172,717
		<b>State Funds from TxDOT</b>	0
		<b>Other Funds</b>	30,480
<b>Apportionment Year</b>	2025	<b>Fiscal Year Cost</b>	<b>\$203,197</b>
<b>Project Phase</b>			
<b>Brief Project Description:</b>	Funds will be use for improving mobility for seniors and individuals with disabilities by removing barriers to transportation service and expanding transportation mobility options. Projects includes Capital investment and Operating assistance.	<b>Total Project Cost</b>	\$203,197
		<b>Trans. Dev. Credits Requested</b>	\$0
		<b>Trans. Dev. Credits Awarded (Date &amp; Amount)</b>	\$0
<b>Sec 5310 ID Number</b>			
<b>Amendment Date &amp; Action</b>			

<u>General Project Information</u>		<u>Funding Information (YOE)</u>	
<b>Project Sponsor</b>	City of Laredo	<b>Federal Funding Category</b>	<b>5339</b>
<b>MPO Project Information (reference number, etc)</b>		<b>Federal (FTA) Funds</b>	\$381,215
		<b>State Funds from TxDOT</b>	0
		<b>Other Funds</b>	67,273
<b>Apportionment Year</b>	2025	<b>Fiscal Year Cost</b>	<b>\$448,488</b>
<b>Project Phase</b>			
<b>Brief Project Description:</b>	Funds will be used for replacing heavy-duty buses and paratransit vans, and bus facility improvements.	<b>Total Project Cost</b>	\$448,488
		<b>Trans. Dev. Credits Requested</b>	\$0
		<b>Trans. Dev. Credits Awarded (Date &amp; Amount)</b>	\$0
<b>Sec 5339 ID Number</b>			
<b>Amendment Date &amp; Action</b>			

**FY 2026 TRANSIT PROJECT DESCRIPTIONS**

**LAREDO MPO TRANSPORTATION IMPROVEMENT PROGRAM**

Laredo District 22

YOE = Year of Expenditure

<u>General Project Information</u>		<u>Funding Information (YOE)</u>	
<b>Project Sponsor</b>	City of Laredo	<b>Federal Funding Category</b>	<b>5307</b>
<b>MPO Project Information (reference number, etc)</b>		<b>Federal (FTA) Funds</b>	\$3,515,783
		<b>State Funds from TxDOT</b>	637,564
		<b>Other Funds</b>	12,677,358
<b>Apportionment Year</b>	2026	<b>Fiscal Year Cost</b>	<b>\$16,830,705</b>
<b>Project Phase</b>			
<b>Brief Project Description:</b>	Funds will be used for assistance for El Metro Transit bus operations and maintenance.	<b>Total Project Cost</b>	\$16,830,705
		<b>Trans. Dev. Credits Requested</b>	\$0
		<b>Trans. Dev. Credits Awarded (Date &amp; Amount)</b>	\$0
<b>Sec 5307 ID Number</b>			
<b>Amendment Date &amp; Action</b>			

<u>General Project Information</u>		<u>Funding Information (YOE)</u>	
<b>Project Sponsor</b>	City of Laredo	<b>Federal Funding Category</b>	<b>5310</b>
<b>MPO Project Information (reference number, etc)</b>		<b>Federal (FTA) Funds</b>	\$172,717
		<b>State Funds from TxDOT</b>	0
		<b>Other Funds</b>	30,480
<b>Apportionment Year</b>	2026	<b>Fiscal Year Cost</b>	<b>\$203,197</b>
<b>Project Phase</b>			
<b>Brief Project Description:</b>	Funds will be use for improving mobility for seniors and individuals with disabilities by removing barriers to transportation service and expanding transportation mobility options. Projects includes Capital investment and Operating assistance.	<b>Total Project Cost</b>	\$203,197
		<b>Trans. Dev. Credits Requested</b>	\$0
		<b>Trans. Dev. Credits Awarded (Date &amp; Amount)</b>	\$0
<b>Sec 5310 ID Number</b>			
<b>Amendment Date &amp; Action</b>			

<u>General Project Information</u>		<u>Funding Information (YOE)</u>	
<b>Project Sponsor</b>	City of Laredo	<b>Federal Funding Category</b>	<b>5339</b>
<b>MPO Project Information (reference number, etc)</b>		<b>Federal (FTA) Funds</b>	\$381,215
		<b>State Funds from TxDOT</b>	0
		<b>Other Funds</b>	67,273
<b>Apportionment Year</b>	2026	<b>Fiscal Year Cost</b>	<b>\$448,488</b>
<b>Project Phase</b>			
<b>Brief Project Description:</b>	Funds will be used for replacing heavy-duty buses and paratransit vans, and bus facility improvements.	<b>Total Project Cost</b>	\$448,488
		<b>Trans. Dev. Credits Requested</b>	\$0
		<b>Trans. Dev. Credits Awarded (Date &amp; Amount)</b>	\$0
<b>Sec 5339 ID Number</b>			
<b>Amendment Date &amp; Action</b>			



Laredo - District Number 22

FY 2023 - 2026 Transportation Improvement Program

All Figures in Year of Expenditure (YOE) Dollars

Transit Program		FY 2023			FY 2024			FY 2025		
		Federal	Match	Total	Federal	Match	Total	Federal	Match	Total
1	Sec. 5307 - Urbanized Formula >200K	\$4,153,347	\$12,677,358	\$16,830,705	\$4,153,347	\$12,677,358	\$16,830,705	\$4,153,347	\$12,677,358	\$16,830,705
2	Sec. 5307 - Urbanized Formula <200K			\$0			\$0			\$0
3	Sec. 5309 - Fixed Guideway Investment			\$0			\$0			\$0
4	Sec. 5337 - State of Good Repair			\$0			\$0			\$0
5	Sec. 5339 - Bus & Bus Facilities >200k	\$381,215	\$67,273	\$448,488	\$381,215	\$67,273	\$448,488	\$381,215	\$67,273	\$448,488
6	Sec. 5310-Seniors&People w/Disabilities >200k	\$172,717	\$30,480	\$203,197	\$172,717	\$30,480	\$203,197	\$172,717	\$30,480	\$203,197
7	Sec. 5316 - JARC >200K			\$0			\$0			\$0
8	Sec. 5317 - New Freedom >200K			\$0			\$0			\$0
9	Other FTA			\$0			\$0			\$0
10	Regionally Significant or Other (incl FHWA transfers)			\$0			\$0			\$0
<b>Total Funds</b>		<b>\$4,707,279</b>	<b>\$12,775,111</b>	<b>\$17,482,390</b>	<b>\$4,707,279</b>	<b>\$12,775,111</b>	<b>\$17,482,390</b>	<b>\$4,707,279</b>	<b>\$12,775,111</b>	<b>\$17,482,390</b>
Transportation Development Credits										
Requested				\$0			\$0			\$0
Awarded				\$0			\$0			\$0

All Figures in Year of Expenditure (YOE) Dollars

Transit Programs		FY 2026			Total		
		Federal	Match	Total	Federal	Match	Total
1	Sec. 5307 - Urbanized Formula >200K	\$4,153,347	\$12,677,358	\$16,830,705	\$16,613,388	\$50,709,432	\$67,322,820
2	Sec. 5307 - Urbanized Formula <200K			\$0	\$0	\$0	\$0
3	Sec. 5309 - Fixed Guideway Investment			\$0	\$0	\$0	\$0
4	Sec. 5337 - State of Good Repair			\$0	\$0	\$0	\$0
5	Sec. 5339 - Bus & Bus Facilities >200k	\$381,215	\$67,273	\$448,488	\$1,524,860	\$269,092	\$1,793,952
6	Sec. 5310-Seniors&People w/Disabilities >200k	\$172,717	\$30,480	\$203,197	\$690,868	\$121,920	\$812,788
7	Sec. 5316 - JARC >200K			\$0	\$0	\$0	\$0
8	Sec. 5317 - New Freedom >200K			\$0	\$0	\$0	\$0
9	Other FTA			\$0	\$0	\$0	\$0
10	Regionally Significant or Other (incl FHWA transfers)			\$0	\$0	\$0	\$0
<b>Total Funds</b>		<b>\$4,707,279</b>	<b>\$12,775,111</b>	<b>\$17,482,390</b>	<b>\$18,829,116</b>	<b>\$51,100,444</b>	<b>\$69,929,560</b>
Transportation Development Credits							
Requested				\$0			\$0
Awarded				\$0			\$0



---

### **XIII. MPO Self-Certification**

In accordance with 23 Code of Federal Regulations (CFR) part 450.334, the Texas Department of Transportation and the Laredo Webb County Area Metropolitan Planning Organization, hereby certifies that the metropolitan transportation planning process is being carried out in accordance with all applicable requirements including:

- 1) 23 United States Code (U.S.C) 134, 49 U.S.C 503, and 23 CFR 450 subpart C – Metropolitan Transportation Planning and Programming;
- 2) In nonattainment and maintenance areas, sections 174 and 176 (c) and (d) of the Clean Air Act, as amended (42 U.S.C. 7504, 7506 (c) and (d)) and 40 CFR part 93;
- 3) Title VI of the Civil Rights Act of 1964, as amended (42 U.S.C. 2000d-1) and 49 CFR part 21;
- 4) 49 U.S.C. 5332, prohibiting discrimination on the basis of race, color, creed, national origin, sex, or age in employment or business opportunity;
- 5) Section 1101(b) of the Safe, Accountable, Flexible, Efficient Transportation Equity Act: A Legacy for Users (SAFETEA-LU (Public Law 109-59)) and 49 CFR part 26 regarding the involvement of disadvantaged business enterprises in USDOT funded projects;
- 6) 23 CFR part 230, regarding the implementation of an equal employment opportunity program on Federal and Federal-aid highway construction contracts;
- 7) The provisions of the Americans with Disabilities Act of 1990 (42 U.S.C. 12101 et seq.) and 49 CFR parts 27, 37, and 38;
- 8) The Older Americans Act, as amended (42 U.S.C. 6101), prohibiting discrimination on the basis of age in programs or activities receiving Federal financial assistance;
- 9) Section 324 of title 23 U.S.C. regarding the prohibition of discrimination based on gender; and,
- 10) Section 504 of the Rehabilitation Act of 1973 (29 U.S.C. 794) and 49 CFR part 27 regarding discrimination against individuals with disabilities.

---

David Salazar  
District Engineer

---

Mayor Pete Saenz  
Metropolitan Planning Organization

#### XIV. GLOSSARY OF TERMS

**CSJ** - Control Section Job (number) - This is a TxDOT assigned number for projects entered into the Project Development Program (PDP).

**PROJ ID** - Project Identification Number - This is a number or code assigned by the MPO for local tracking or identification of a project and is intended to relate projects to the Metropolitan Transportation Plan (MTP).

**F. CLASS** - Federal Functional Classification - This identifies the Federal Functional classification of streets and highways according to functional operating characteristics. The Federal Functional Classifications are:

- 1 - Interstate
- 2 - Other Freeways and Expressways
- 3 - Other Principal Arterials
- 4 - Minor Arterials
- 5 - Major Collectors
- 6 - Minor Collectors
- 7 - Local Streets

**CATEGORY** - Federal Funding Category - The current major federal funding categories as established by the Intermodal Surface Transportation Equity Act of 1991 (ISTEA), the Transportation Equity Act for the 21st Century (TEA-21), the Safe, Accountable, Flexible, Efficient, Transportation Equity Act: A Legacy for Users (SAFETEA-LU), Moving Ahead for Progress in the 21<sup>st</sup> Century (MAP 21), and the FAST Act are:

- Category 1. Preventive Maintenance and Rehabilitation
- Category 2. Metropolitan and Urban Corridor Projects
- Category 3. Non-Traditionally Funded Transportation Projects
- Category 4. Statewide Connectivity Corridor Projects
- Category 5. Congestion Mitigation and Air Quality Improvement
- Category 6. Structures Replacement and Rehabilitation (Bridge)
- Category 7. Metropolitan Mobility and Rehabilitation
- Category 8. Safety
- Category 9. Transportation Alternatives Set-Aside
- Category 10. Supplemental Transportation
- Category 11. District Discretionary
- Category 12. Strategic Priority
- FLHP - Federal Land Highway Program
- FTA - Federal Transit Administration Funding

**PHASE** - Project Phase for Federal Funding (E-Preliminary Engineering, R-Right of Way Acquisition & C-Construction)

3. Discussion on potential planning studies to be programmed in the FY 2023 Unified Planning Work Program (UPWP).



## MPO POLICY COMMITTEE MEETING

www.laredompo.org

**Meeting Date & Time:** May 18th, 2022 at 1:30 p.m.

**Meeting Location:** City of Laredo Council Chambers, 1110 Houston St., Laredo, Texas 78040

**Meeting Link:** <http://laredotx.swagit.com/live>

**Laredo TV:** Spectrum TV channel 1300

### AGENDA:

- I. CHAIRPERSON TO CALL MEETING TO ORDER
- II. CHAIRPERSON TO CALL ROLL
- III. CITIZEN COMMENTS

Speakers are required to fill out witness cards, which must be submitted to MPO Staff no later than 1:45 p.m. the day of the meeting. Speakers shall identify themselves at the microphone. Comments are limited to three (3) minutes per speaker. No more than three (3) persons will be allowed to speak on any side of an issue. Should there be more than three (3) people who wish to speak on a specific issue, they should select not more than three (3) representatives to speak on their behalf. The presiding officer may further limit public on the interest of order or time. Speakers may not transfer their minutes to any other speaker. Comments should be relevant to MPO business and delivered in a professional manner. No derogatory remarks shall be permitted.

### IV. ITEMS REQUIRING POLICY COMMITTEE ACTION:

- A. Approval of the minutes for the meeting held on April 20th, 2022
- B. Receive public testimony and approve Resolution No. MPO 2022-05, adopting the 2023-2026 Transportation Improvement Program (TIP).
- C. Discussion with possible action on the Hacher-Reuthinger Road project.

## MPO POLICY COMMITTEE MEETING AGENDA

### V. REPORT(S) AND PRESENTATIONS (No action required).

- A. Status report by the Regional Mobility Authority (RMA).
- B. Report on the results of the external audit of the Laredo Webb County Area Metropolitan Planning Organization performed by the TxDOT Compliance Division

### VI. DIRECTOR'S COMMENTS

### VII. ADJOURNMENT

#### **NOTICE INFORMATION:**

Notice of this meeting was posted at the municipal government offices, 1110 Houston Street, Laredo, Texas, at a place convenient and readily accessible to the public at all times. Said notice was posted 72 hours before the meeting date and time. The agenda and meeting information was also posted online at <http://www.laredompo.org/agendas-minutes/>.

All meetings of the MPO Committee are open to the public. Persons who plan to attend this meeting and who may need auxiliary aid or services such as: interpreters for persons who are deaf or hearing impaired, readers of large print or Braille, or a translator for the Spanish language are requested to contact MPO Staff at 956-794-1613, or via email at [aquijano@ci.laredo.tx.us](mailto:aquijano@ci.laredo.tx.us) at least two working days prior to the meeting so that appropriate arrangements can be made. Materials in Spanish may also be provided upon request.

Disability Access Statement: This meeting is wheelchair accessible. The accessible ramps are located at 1110 Victoria and 910 Flores. Accessible parking spaces are located at City Hall, 1110 Victoria.

Ayuda o Servicios Auxiliares: Todas las reuniones del Comité del MPO están abiertas al público. Personas que planean asistir a esta reunión y que pueden necesitar ayuda o servicios auxiliares como: interpretes para personas con discapacidad auditiva, lectores de letra grande o en Braille, o un traductor para el idioma español deben comunicarse con el personal del MPO al 956-794-1613 o por correo electrónico [aquijano@ci.laredo.tx.us](mailto:aquijano@ci.laredo.tx.us) por lo menos dos días laborales antes de la reunión para que se puedan hacer los arreglos apropiados. Material en español está disponible mediante una petición.

Declaración de Acceso a la Discapacidad: Esta reunión permite el acceso a personas en silla de ruedas. Las rampas de acceso están ubicadas en 1110 Victoria y 900 Flores. Los espacios de estacionamiento para discapacitados se encuentran por la calle Victoria.

Información en español: Si usted desea esta información en español o si desea explicación sobre el contenido, por favor llámenos al teléfono (956) 794-1613 o comunicarse con nosotros mediante correo electrónico a [aquijano@ci.laredo.tx.us](mailto:aquijano@ci.laredo.tx.us).



**POLICY COMMITTEE MEMBERSHIP:**

**City of Laredo Representatives:**

Honorable Pete Saenz, Mayor and LWCAMPO Chairperson  
Honorable Ruben Gutierrez, Jr., City Councilmember, District V  
Honorable Dr. Marte Martinez, City Councilmember, District VI

**County of Webb Representatives:**

Honorable Tano E. Tijerina, Webb County Judge and LWCAMPO Vice-Chairperson  
Honorable Jesse Gonzalez, Webb County Commissioner, Pct. 1  
Honorable John Galo, Webb County Commissioner, Pct. 3

**Laredo Mass Transit Board Representative:**

Honorable Vanessa Perez, City Councilmember, District VII

**State Representative:**

Mr. David M. Salazar, Jr. P.E., TxDOT District Engineer

**Private Sector Representative (Member at Large):**

Mr. Humberto "Tito" Gonzalez, Jr., P.E.

**Ex-Officio Representatives:**

Honorable Judith Zaffirini, State Senator, District 21  
Honorable Richard Raymond, State Representative, District 42  
Honorable Tracy O. King, State Representative, District 80

**AGENDA REVIEWED:**

---

Juan S. Mendive,  
LWCAMPO Interim Director

---

Jose A. Valdez, Jr.  
Laredo City Secretary

5. Discussion of old or new business.

6. Adjournment.